



STARS & STRIPES

MAY 1, 2021

12:30 PM EST WAGNER SALE FACILITY HERSHEY, PA

STARS & STRIPES



MAY 1, 2021

12:30 PM EST WAGNER SALE FACILITY HERSHEY, PA
VIDEO SALE

Sale Day Phones:

859.421.6100, Doug Parke
859.421.6100, Drew Hatmaker

Hotel Information:

Holiday Inn Harrisburg – Hershey
604 Station Rd, Grantville, PA 17028
717.469.0661, Hotel Main Phone

Hilton Garden Inn Hershey

550 E Main St., Hummelstown, PA 17036
717.566.9292

Air Transportation:

Harrisburg International Airport – 12 minutes from Hershey, PA
Baltimore/Washington Airport – 1 hour 30 minutes

Sale Staff:

Thomas Carper, Auctioneer	540.336.2737
Jacob Schwab	812.212.2095
Charles Strickler	540.923.4717

Sale Consultants:

DP Sales Management	
Doug Parke	859.421.6100
Drew Hatmaker	423.506.8844
Dalton Lundy	502.727.6898

Insurance:

Jame Secondino	765.832.2697
----------------	--------------

Trucking:

Bryan Wyatt	423.240.5533
Dick Coleman	765.461.0954

Sale Location:

Curry Wagner Sale Facility

1423 Sand Beach Rd Hummelstown, Pa. 17036
Curry Wagner 717.991.0387 Curry Wagner Jr. 717.943.2263

Sale Terms and Conditions:

All buyers numbers will only be issued with a valid ID and payment is due day of sale. DP Sales Management, LLC accepts Visa, Mastercard, check, e-check, or cash. All purchases are expected to be paid for day of sale unless arrangements have been made with sale management prior to. Cattle will not be transferred until paid in full. Purchases made through internet bidding follow the same terms. Payments must be completed on day of sale by credit card or e-check

Announcements:

Announcements made sale day from the auction block during the sale take precedence over printed material associated with this sale. Anyone attending this sale attends at his or her own risk, neither sale management nor Curry Wagner assume liability for accidents or loss of property. DP Sales Management is only an agent for the seller and has no responsibilities other than those involved in conducting the sale.

EPDs:

Please note the EPDs may change from the time the sale catalog is printed until registration papers are transferred. EPDs listed are the new Spring 2021 numbers.

Sale Manager:



Doug & Debbie Parke • 859.421.6100
Drew & Holli Hatmaker • 423.506.8844
53 Bourbon Hills • Paris KY 40361
859.987.5758 • office@dpsalesllc.com

WELCOME

The theme for this year continues to be that we are happy to see things getting back to normal and operating more like we are used to. Though 2020 was a difficult year, the Stars & Stripes group was able to make the best of the situation and host a very successful online sale. The sale offering was received well, as usual and customers were able to come to the Curry Wagner Sale Facility and view the cattle.

We are back at Curry's facility in 2021 and will be having a live, video sale here at the farm. Cattle will be on display for you to look at, but we won't actually be running cattle in the ring. The group is excited to welcome you back to the sale this year. Though changes have been made the last few years, the group of consignors continues to bring pairs, opens, breds, and a few special herdsire prospects for your appraisal.

This sale has been known for sending cattle all over the United States and we look forward to reaching Simmental breeders again this year. Should you have any questions, please feel free to contact sales management or any of the consignors. Make plans to visit the area and take in the sweetness of Hershey, PA.



FOUNDERS

Mountain View Farm

Tom and Barbara Vossler
665 Knoxlyn Rd • Gettysburg, PA
717.337.1615

Simme Valley Ranch

Jeanne White
6493 Stauber Rd • Groton, NY
607.423.4888
607.280.4299, Phil Paradis

CLO Simmentals

Cliff & Lynn Orley
1486 Mt Wilson Rd • Lebanon, PA
717.269.0128

Powell's Valley Simmentals

Laurie Meyers
470 Million Dollar Rd • Halifax, PA
717.350.2516

Hillcrest Farm

Gary & Cindy Bertrand
148 Millbury St. • Auburn, MA
508.823.8313

Elm Side Farm

Art, Roger & Darby Reynolds
836 Little Dryden Rd • Walton, NY
607.865.6888, office • 607.434.3058, cell

Pine Creek Show Cattle

Matt Thurston & Jade Gianforte
61 Route 232 • Rumford, ME
207.357.8900

Green Ridge Farm

Joe Lapp
120 Slate Lane • McVeytown, PA
717.899.7338

Stewart's Simmental Cattle

Greg & Sam Stewart
2016 Armstrong Valley • Halifax, PA
717.350.5235

Creek Bend Farm

Daniel & Stacey Workman
1348 Harney Road • Littlestown, PA
717.451.2295

OEI Simmental

Gavin Howe 570.404.1026
Teresa St Peter 570.404.1110
6408 Route 249 • Westfield, PA

ERV Cattle

Ethan & Rachel Virgili
890 Browns Ferry Rd. • Carmichaels, PA
724.833.0462



PVSM Color Play



PVSM Color Play

1/23/19 • 3601951 • G4 • ADJ BW: 83

HPF Tradecraft D010

PVSM Fire Opal

JF Milestone 999W
RP/MP Right To Love 015U
GWS Ebony's Trademark 6N
PVSM Legacy Of Uxbenka

Purebred SM

CE	BW	WW	YW	MCE	MILK	MWW	MARB	REA	API
6	5.8	88	127	1.7	22	65	0.02	0.88	111

• Color Play is a prime example of everything we are looking for in a female – homozygous polled, soundness, growth, huge capacity and rib shape, super disposition, and the ability to raise a phenomenal calf. This is a cow family that we have been developing for 17 years, and we couldn't be more proud of the result! Her solid black heifer calf at side is a perfect example of what you can expect her to produce. We showed CP as a heifer, so if you are looking for a pair to show this year, here they are! If we were keeping Color Play, we would be flushing her as you are reading this, so we will definitely like to talk to her new owners about the possibility of buying embryos from her.

1A PVSM End Play • 2/6/21 • Heifer • BW: 87 • Tattoo: J02

Sire: CLRS Dividend 405D, ASA# 3097854

consignor: Powell Valley Simmentals



Simme Valley Gotcha

2/6/19 • 3555033 • X3G • ADJ BW: 94

CLRWTR Shock Force W94C

B&B Miss Power Lass K1

SVF Steel Force S701
Myers Queen Sazerac P94
WLE Power Stroke
TJF Tom Girl H52

Purebred SM

CE	BW	WW	YW	MCE	MILK	MWW	MARB	REA	API
10	2.1	59	88	5	18	48	-0.02	0.56	106

• Gotcha is an embryo daughter out of Miss Power Lass K1, our donor that was flushed in coop with Hudson Pines Farm. About a third of my herd consists of offspring out of this old gal. She produced outstanding calves until she was 16 years old. It is difficult to get a purebred as clean fronted as this powerhouse two-year old. This is one I really wanted to keep and you will see why. She is sold with a solid red bull calf born 3-11-21 sired by Kappes Pendleton. He will make a great herd sire. Red, homozygous polled by pedigree. BVD-PI negative. Farm BQA Certified.

2A • 3/1/21 • Bull • Sire: Pendleton, ASA#2840215

consignor: Simme Valley



ESS Febree FD27

2/11/18 • 3427067 • FD27 • ADJ BW: 90

W/C Executive Order 8543B

ESS Deana D27

W/C United 956Y
Miss Werning KP 8543U
W/C Wide Track 694Y
Bramlets Diamond

Purebred SM

CE	BW	WW	YW	MCE	MILK	MWW	MARB	REA	API
11	2	85	128	5.2	22	64	0.12	0.93	126

• A three year old full sister to the HD27 yearling is a glimpse into the future. Sound, eye appealing and productive with a standout heifer calf at side by 2020 is the kind to build a program around. Both BVD-PI negative.

bred AI to Mr. CCF 20-20, ASA#2964446 on 3/23/21

3A 1/20/21 • Heifer • BW: 90 • Tattoo: JF27

consignor: Elmside Farm



ESS Febree FD27

4

HFSC Gracious HG7

2/15/19 • 3590229 • HG7 • ADJ BW: 81

HPF Tradecraft D010

Hillcrest Miss Athena

JF Milestone 999W
 RP/MP Right To Love 015U
 Remington Red Label HR
 Miss Lola

Purebred SM

CE	BW	WW	YW	MCE	MILK	MWW	MARB	REA	API
7	4.1	80	117	4.1	22	62	0.02	0.72	111

• If you are looking for some red, this is your lot! Not only does this 2 year old red blaze cow have phenotype, she has genotype and longevity. Big middled, fluid in her movement, she was part of our 2020 show string, if only she could have proved herself in the show ring. Her dam and granddam are two of the most prominent cows in our herd and we are excited to offer our best with this consignment. Don't miss out on the opportunity and future of this young cow. Hillcrest Farm is BQA certified, BVD tested negative. She has a promising bull calf at side out of our red Quantum Leap son.

4A HFSC Mr Just Right • 3861218 • 3/2/21 • Bull • BW: 84

• Tattoo: HJ13 • Sire: Besh Bull GD334, ASA#3681324

consignor: Hillcrest Farm



HFSC Gracious HG7

5

GRSM Ms Stroke 226H

2/26/19 • 3706200 • 226G • ADJ BW: 72

W/C Loaded Up 1119Y

HTP SVF Dew The Stroke

Remington Lock N Load 54U
 Aubreys Black Blaze III
 WLE Power Stroke
 HTP SVF Honeydew

Purebred SM

CE	BW	WW	YW	MCE	MILK	MWW	MARB	REA	API
12	2	68	101	7	21	55	0.03	1.01	120

• Ms. Stroke is a young black baldy cow that has endless potential. She is sired by Loaded Up and is a direct daughter of Dew the Stroke. That makes her a maternal sib to 20/20 who has done a great job in the industry and The Duke who is a rising star in the breed. In her own right she has all the parts to get the job done. She will calve by sale time to Pay Up, our herdsire we purchased from Wesner and Purdue last year. His first calves look very promising.

pasture exposed to WLE Pay Up E565, ASA#3372058 from 6/20/20 to 7/20/20
 Due by sale day

consignor: Green Ridge Simmentals



GRSM Ms Stroke 226H

6

SSC Miss Cool 315G

3/15/19 • 3670280 • 315G • ADJ BW: 88

JF Milestone 999W

Lazy H Shez Too Cool W58

TNT Top Gun R244
 Ms Maxie Lou M112S
 CNS Dream On L186
 SS/Rew Too Cool S365

Purebred SM

CE	BW	WW	YW	MCE	MILK	MWW	MARB	REA	API
9	2.5	80	119	4.8	18	59	-0.04	0.78	119

• Miss Cool 315G is a young 2yr old pair that ties together a lot of good things. She's got a great pedigree, tying together Shez Too Cool W58 with the female maker JF Milestone. Making her a maternal sib to many of the past high sellers at the Stars and Stripes sale who have gone on to make their new owners money. On top of that she has a tremendous little SVF Steel Force heifer calf at her side. Miss Cool is a beautiful uddered young cow with an extremely bright future ahead of her. Be sure to find her sale day as she destined to follow in the footsteps of her sibs and make you money.

6A SSC LIL MISS COOL 25J • 3864875 • 2/5/21 • Heifer •

BW: 88 • Tattoo: 25J • Sire: SVF Steel Force S701, ASA#2340262

consignor: Stewart's Simmental Cattle



SSC Miss Cool 315G



ESS Gwen G32



CLO Shasta's Finale 29F1

29F1 calf at side



Simme Valley Firebird



ESS Gwen G32

4/3/19 • 3557613 • G32 • ADJ BW: 96

W/C Executive Order 8543B

W/C United 956Y

Miss Werning KP 8543U

CLO LTS Entourage 72T

ESS RoseR12

ESS Zale ZR12

Purebred SM

CE	BW	WW	YW	MCE	MILK	MWW	MARB	REA	API
14	-0.3	75	114	6.8	21	59	0.03	0.9	128

- Moderate framed, structurally sound first calf heifer with perfect udder and teat design. This one is going to mature into a donor quality cow. She is raising a really sharp 2020 sired calf. Cow is halter broke and both are BVD-PI negative.

7A • 2/9/21 • Heifer • BW: 85 • Tattoo: J32 •

Sire: Mr. CCF 20-20, ASA#2964446

consignor: Elmside Farm



CLO Shasta's Finale 29F1

4/17/18 • 3495715 • 29F1 • ADJ BW: 71

MVS Maximus

SRS Fortune 500

Shoemakers Miss Emma

CNS Dream On L186

WAR Diva M704

CLO Shasta 129S

Purebred SM

CE	BW	WW	YW	MCE	MILK	MWW	MARB	REA	API
11	2.1	67	101	5.5	23	57	0.02	0.76	122

- Strong Breeding programs with longevity are always built around dominant quality cow families. The 29F1 pair stems from the most consistent quality family we have ever worked with. . . Sheza Dandy. The list of notable relatives is lengthy and prominent in the last two decades of Simmental Genetics. Finale's sire was a previous National Champion for Mountain View Farm and her dam is an ET flushmate to CLO Shania, former National Champion Female. A vintage proven pedigree for sure! 29F1 will not disappoint when it comes to sound structure, femininity, and body length with a touch of added frame. Her heifer calf Harper F1H is among the best Lover Boy daughters we have seen. This heifer calf has the 'look' to be noticed wherever she goes. Don't miss her! 29F1 will sell bred to the popular JSUL Something About Mary sire. His calves are outstanding. The pair is OCV, BQA certified. Build your future here!

bred AI to JSUL Something About Mary, ASA#3565879 on 1/21/21

8A • 10/6/20 • Heifer • Sire: THSF Lover Boy B33, ASA#2983443

consignor: CLO Simmentals



Simme Valley Firebird

9/19/18 • 3543639 • ZC9F • ADJ BW: 114

Mack AF W273

STF Dominique R170

Miss Thunder Pine S273

WHF/PRS Game On 001Y

Simme Valley Zinfadel

Simme Valley Chateau

Purebred SM

CE	BW	WW	YW	MCE	MILK	MWW	MARB	REA	API
3	5.3	76	114	0.4	22	60	0.01	0.8	102

- As you can see, Firebird is a stout redhead that will fit into anyone's program. She was shown as a Senior Calf and a bred Senior Yearling. You will have to excuse the lack of cleanliness. It has been a tough winter in Upstate New York and has been too cold to attempt to wash anything. She is raising a fancy black heifer calf born 11-6 and rebred back for an October 1st calf sired by Felt Last Call. Red, double polled. BVD-PI negative. Farm is BQA Certified.

bred AI to Felt Last Call, ASA#3493799 on 12/20/20

9A • 11/6/20 • Heifer • BW: 90 • Sire: Simme Valley Macho

As U, ASA#2178168

consignor: Simme Valley



ERV Cinnamon Rock

2/12/17 • 3276866 • E708 • ADJ BW: 73

CDI Rimrock 325Z

ERV Cinnamon

WS Beef King W107
CDI Ms Top Gun 5U
Benners Mr Amigo
41

3/4 Blood SM

CE	BW	WW	YW	MCE	MILK	MWW	MARB	REA	API
12	0.4	73	100	6.4	17	54	0.23	0.72	128

Where do you start on a pair that is this cool? Lets start by saying red genetics are on fire right now! This young red cow is in the prime of her life. She is moderate framed, good fronted and comes down on a great running gear. Cinnamon Rock prances through the pasture like a cat. It's hard to let go of a good young cow like this, but we wanted to bring our best. Maybe the best part about this pair is the little red baldy heifer calf sired by County O. She will catch your attention come sale day.

10A ERV Cinnamon Spice J122 • 3855987 • 2/19/21 • Heifer

BW: 81 • Tattoo: J122 • Sire: GEF County O, ASA#3289219

consignor: ERV Cattle



ERV Cinnamon Rock



ERV Lexi

3/10/16 • 3210134 • D631 • ADJ BW: 81

Cherokee Rooster

Alexis

Remington Lock N Load 54U
JF Perfection 850U
STF Here I Come P373
KJS Ms Roll The Dice N35

Purebred SM

CE	BW	WW	YW	MCE	MILK	MWW	MARB	REA	API
10	1.5	64	95	5.1	20	51	0	0.72	111

Lexi is one impressive Lock and Load granddaughter. She is smooth muscled with an extended front one third. She is the kind of cow that stops you in your tracks when she is on the profile. If Lexi isn't enough for you, just take one look at her ultra attractive Relentless heifer calf. This calf is super cool and I think has a big show career ahead of her. Relentless heifers are winning big at every level.

11A ERV Miss Lexi J120 • 3855953 • 2/18/21 • Heifer

BW: 78 • Tattoo: J120 • Sire: W/C Relentless 32C, ASA#3045559

consignor: ERV Cattle



ERV Lexi



ESS Cookie CX10

1/2/15 • 2978810 • CX10 • ADJ BW: 90

B C Lookout 7024

ESS Xceeds X10

O C C Legend 616L
GibbetHill Mignonne E37
GWS Ebony's Trademark 6N
Reachs Kentucky Girl

1/2 Blood SM

CE	BW	WW	YW	MCE	MILK	MWW	MARB	REA	API
11	2.8	72	102	2	15	51	0.15	0.61	113

By the legendary BC Lookout, this big powerful cow in the prime of her life is the front pasture kind. She is eye appealing and sound with tremendous depth and presence. Raising a stout Turnpike bull calf at side. Cow is halter broke and pair is BVD-PI negative.

bred AI to Ruby's Turnpike 771E, ASA#3282048 on 3/26/21

12A • 2/16/21 • Bull • BW: 94 • Tattoo: JC10

Sire: Ruby's Turnpike 771E, ASA#3282048

consignor: Elmside Farm



ESS Cookie CX10



PRS Look of H25 W264 - reference dam



B-C Lookin Sharp7002E full sister to Lot 13



HILB Oracle C033R - reference sire



GEFF County O - reference sire



STF Deception W153 - reference dam

13 ★ PRS Look of H25 W264 x HILB Oracle C033R 3 IVF Sexed Heifer Embryos • 2526141

HILB Oracle C033R

- LLSF Uprising Z925
- SS Baby's Breath P035
- DCC New Look 101
- JM BF H25

PRS Look of H25 W264

PROJ EPDs

CE	BW	WW	YW	MCE	MILK	MWW	MARB	REA	API
11	1.7	69	98	5.35	19	53	0.07	0.61	113

• After purchasing W264 at the Badger Creek dispersal we were thrilled at first sight. This female is so flawless in her design and just plain fun to look at. As a calf she sold in the Land of Lincoln sale for \$21,000. W264 is a maternal sister to the Triple Crown winning Mr. HOC Broker who will always be a legend in the breed. And this mating to the \$52,000 Oracle is lights out. B-C Lookin Sharp 7002E who sold at the dispersal as well for \$38,000 is a full sister to this mating. That female's eggs have been selling super well for Sloup Simmentals for as much as \$2,500 an eg. An Oracle son of W264 was used heavily as a herdsire for Badger Creek. Its been said that the Oracle x W264 is one of the most successful matings ever to be made at Badger Creek. Selling 3 sexed heifer embryos guaranteeing 1 pregnancy. Embryos stored at TransOva Maryland.

consignor: Green Ridge Simmentals

14 ★ STF Deception W153 x GEFF County O 3 IVF Reverse Sort Female Embryos • 2486440

GEFF County O

- W/C Loaded Up 1119Y
- Ruby NFF Rhythm 475B
- STF Dominance T171
- GCF Miss Caliente

STF Deception W153

PROJ EPDs

CE	BW	WW	YW	MCE	MILK	MWW	MARB	REA	API
7	2.55	71	106	3.85	20	55	-0.12	0.88	111

• The direct daughter of the great Caliente donor, is a full sister to the great STF Onyx. Deception was a long time donor in the STF program and left her mark there. One of her best known daughters is the beautiful red donor STF ZW87, that resides at Sloups Simmentals. I think this mating to County O is going to be a home run on this prolific donor. Selling 3 IVF reverse sort female embryos, guaranteeing one 90 day pregnancy. Embryos are located at Trans Ova Maryland and can easily be shipped.

consignor: Ethan Virgili



Lazy H Shez Too Cool W58 - reference dam



SSC Victoria's Secret - sib to pregnancy



SSC Shell Shocked - sib to pregnancy

15

Lazy H Shez Too Cool W58 pregnancy

Pregnancy • 2494553F • DUE: 9/1/21

Remington Secret Weapon

- GWS Ebony's Trademark 6N
- Aubreys Black Blaze II 5T
- CNS Dream On L186
- SS/Rew Too Cool S365

Lazy H Shez Too Cool W58

Pregnancy

CE	BW	WW	YW	MCE	MILK	MWW	MARB	REA	API
14	0.75	67	96	6.44	17	50	0.03	0.76	129

• This Sexed heifer calf pregnancy needs no introduction. She will be a full sib to SSC Victoria's Secret 49B, the \$37,000 all time high seller and SSC Shell Shocked 44B the \$17,250 all time high selling bull here at the Stars and Stripes sale along with two of last year's high sellers. If you are looking for a future donor cow/show heifer or if you are looking to produce your own high seller, here is your ticket. To sweeten the deal even more the recip is a purebred Upgrade daughter in the prime of her life.

Recipient **SSC Gems Up D466** • ASA# 3601239 • 9/2/16 •
 BW: 91 • Tattoo: D466 • Sire: Mr NLC Upgrade U8676 •
 Dam: Classic Real Gem

consignor: Stewart's Simmental Cattle



W/C Bankroll 811D- ref. sire



GEFF County O - reference sire

16

Lazy H Shez Too Cool W58 Embryos

Selling Choice of Embryos • 2494553

CNS Dream On L186

- Nichols Legacy G151
- CNS Sheeza Dream K107W
- STF Too Red G64
- BCS Lady Luck J109

SS/Rew Too Cool S365

W/C Bankroll 811D Proj EPDs

CE	BW	WW	YW	MCE	MILK	MWW	MARB	REA	API
13	0.9	72	103	7.1	23	59	0.06	1.02	131

GEFF County O Proj EPDs

CE	BW	WW	YW	MCE	MILK	MWW	MARB	REA	API
9	1.8	74	112	44.6	19	56	-0.05	0.98	125

• Here again Shez Too Cool W58 needs no introduction. Being the dam of SSC Shell Shocked 44B and SSC Victoria's Secret 49B along with numerous other high selling off spring. This year we decided to offer some embryos out of some of the top bulls in the breed. W/C Bankroll 811D also needs no introduction as he has been producing Champions and High Sellers all over the country. Your other choice is GEFF County O who has been producing the right kind and we can't wait to see what he will do with Too Cool W58. No matter what you choose we are sure you won't be disappointed. Selling choice of 3 embryos guaranteeing one – 60 day pregnancy out of W/C Bankroll 811D or GEFF County O.

consignor: Stewart's Simmental Cattle

17 

ERV Steelin' the Show

2/19/21 • 3856694 • Tattoo

HTP/SVF Duracell

JM Steel My Heart

CNS Dream On L186
HTP SVF Honeydew
SVF Steel Force S701
JM BF H25

Purebred SM

CE	BW	WW	YW	MCE	MILK	MWW	MARB	REA	API
12	1.65	75	107	6.3	19	56	-0.1	0.89	112

• Delta is one of my personal favorites. She is deep bodied, smooth, and has a killer front end. We may have used her as a recip this year, but don't let that fool you, she is a darn good cow. Her picture speaks for itself. Delta has a baldy ET calf at side that is impressive. She is a Duracell x Steel My Heart, which makes her a full sib to the popular donor, CAJS Sweet Emotion. You will not want to miss this pair come sale day.

Recipient **ERV Delta E709** • 2/13/17 • BW: 80 • Tattoo: **E709** •

Sire: **LMF Moving Forward** • Dam: **ERV Bernadette**

consignor: ERV Cattle



ERV Delta E709 - recipient

18 

SSC Lil Red Head 119J

1/19/21 • 3864874 • 119J • ADJ BW: 86

SVF/NJC Built Right N48

HPF Perfection W568

CNS Dream On L186
NJC Ebony Antoinette
Wheatland Bull 131L
CNS Perfection R521

Purebred SM

CE	BW	WW	YW	MCE	MILK	MWW	MARB	REA	API
11	2.1	67	95	6.4	19	53	-0.07	0.75	115

• As hot as the red deal is right now be sure to check out this stout little red head at the side of her recip dam. SSC LIL Red Head 119J is a full sib to one of the top selling red females to ever cross the auction block here at the Stars and Stripes sale, SSC Pebbles 330Z. Pebbles has gone on to be a great producer for the Lapp Family. I would anticipate Lil Red Head 119J to follow in her sister footsteps and be an extremely high quality producer in your herd. Her recip dam is a registered Mr. Momentum daughter who always raises a quality calf. Don't miss this combo sale day.

Recipient **SSC Miss Momentum 41A** • 3436473 • 4/1/13 •

Tattoo: **41A** • Sire: **STF Mr Momentum H508**

consignor: Stewart's Simmental Cattle



SSC Pebbles 330Z - full sib to 119J



SSC Shez Perfect 21H – This heifer was quite a return on investment. She was purchased in the 2020 Stars & Stripes Sale at the side of her dam for \$3,225. She then sold last fall for \$13,500 on Sherwood's Online Sale. Quadrupling the investment on the first calf.



HFSC Foxy Lady HF6 - reference dam

19 HFSC Foxy Lady HF6 Pregnancy

HEIFER Pregnancy • 3433826 • Due: 9/29/21

THSF Lover Boy B33

HFSC Foxy Lady HF6

HTP/SVF Duracell T52
RP/MP Right to Love 015U
Silveiras Style 9303
Cherokee Steel Lady

Pregnancy

CE	BW	WW	YW	MCE	MILK	MWW	MARB	REA	API
13	0.25	76	113	6.3	17	55	0.31	0.76	132

• The babies are here! Foxy's first batch of embryo calves are here and boy do they look the part to follow in their mother's footsteps. Use this opportunity with the work all done for you get your hand on a Foxy baby and by none other than the well-known Calving Ease Denver champion Lover Boy. With this you also get a papered Simmental recipient cow. ASA#3033867. Not much else to see or say here, get in and let the progeny do the talking for you. Here is an opportunity to get in on some of the best genetics that we have to offer. The potential for this young donor prospect has yet to be tapped and is ready to bring your program to the next level. Foxy Lady was one of the most dominant show heifers in the northeast in 2019 winning breed champion and supreme champion in 7 different states over 15 times. Her first natural calf, a Loaded Up heifer all ready has had a successful show career herself in the southern states. Her first progeny is hitting the ground now and we are very impressed. All the sired matings that we have used, we cannot decide which mating we like the best. This mating of Lover Boy will be one of the first of this mating. Here is an opportunity to have one of the first of these calves. Hillcrest Farm is BQA certified, BVD tested negative.

Recipient HFSC Broker Charm • ASA# 3033867 • 9/24/15 • BW: 92

• Tattoo: HC26 • Sire: Mr HOC Broker • Dam: Hillcrest Miss Shayna

consignor: Hillcrest Farm





Simme Valley Red Hots

20

Simme Valley Red Hots

1/1/20 • 3702765 • E81H • ADJ BW: 100

W/C HOC HCC Red Answer 33B

Remington Lock N Load 54U

Miss Werning KP 8543U

Simme Valley Eye Candie

Mack AF W273

WHSP Oaks Sweet Talkin`

Purebred SM

CE	BW	WW	YW	MCE	MILK	MWW	MARB	REA	API
7	2.8	74	109	1.5	25	62	0.02	1.02	114

- Her name says it all - "RED HOT". You have everything in this package – red, blaze, smooth clean fronted, flat shoulder exploding into a big bold ribbed, big hipped stout female. Shown last summer. Her dam was shown as a two-year old cow/calf and was Supreme of the NY Supreme show. Will be bred to KBHR Sniper. Red, Homozygous Polled by pedigree, BVD-PI negative. Farm BQA Certified.

consignor: Simme Valley



ESS Hazel HC74

21

ESS Hazel HC74

1/3/20 • 3710559 • HC74 • ADJ BW: 86

GSC GCCO Dew North 102C

HTP/SVF DuracellIT52

Welsh's Scarlet 161Z

ESS Cupcake C74

SC Mo Magic S47

Simme Valley Whoopi

Purebred SM

CE	BW	WW	YW	MCE	MILK	MWW	MARB	REA	API
12	0.7	74	112	6.8	21	58	-0.06	0.79	116

- A striking blaze face heifer with exceptional muscle. This powerhouse, free moving female has unlimited potential in the show ring or the pasture. Broke to tie and BVD-PI negative.

bred AI to WS Proclamation, ASA#3254156 on 3/21/21

consignor: Elmside Farm



ES Hera H24

22

ESS Hera H24

1/4/20 • 3710571 • HF24 • ADJ BW: 78

W/C Executive Order 8543B

W/C United 956Y

Miss Werning KP 8543U

LLSF Pays To Believe ZU194

ESS Foxy F24

ESS Zale ZR12

Purebred SM

CE	BW	WW	YW	MCE	MILK	MWW	MARB	REA	API
14	-1	76	115	6.6	22	60	0.11	0.91	128

- This heifer is about as good as you will find with a rock solid pedigree. Halter broke with an excellent disposition making her the perfect prospect for a junior of any age and experience. The more you look at her, the harder it is to find fault with her. Clean fronted, big ribbed, deep sided and extremely sound on the move. This one is donor/foundation material. Do not miss out on her! BVD-PI negative.

consignor: Elmside Farm

23

GRSM Bankin Beauty 125H

1/25/20 • 3861770 • 125H • ADJ BW: 75

W/C Bankroll 811D

FSCI Ms Erica E762

W/C Loaded Up 1119Y
Miss Werning KP 8543U
WS Revival
FSC Ericas Lutton

3/4 Blood SM

CE	BW	WW	YW	MCE	MILK	MWW	MARB	REA	API
11	1.2	74	105	7.9	23	60	0.16	0.82	115

Bankin Beauty is proof of why Bankroll is one of the top sires in today's industry. She is an easy doing and powerful made young female. She traces back to the Ericas Lutton Angus donor that has produced multiple 5 digit high sellers for Ferguson Show Cattle. With Bankroll semen being limited here's an opportunity to add a beautiful daughter.

consignor: Green Ridge Simmentals



GRSM Bankin Beauty 125H

24

CLO Harlow 74H

1/27/20 • 3749971 • 74H • ADJ BW: 75

CCR Wide Range 9005A

CLO Elektra 74E

S D S Graduate 006X
CCR Ms Apple 9332W
CAJS Blaze Of Glory
CLO Diva's LP 174W

Purebred SM

CE	BW	WW	YW	MCE	MILK	MWW	MARB	REA	API
12	0.6	75	112	6.1	10	47	0.03	1.06	124

Harlow 74H sounds the alarm for quality brood cow material. Her granddam was the most reproductively efficient cow ever at CLO Simmentals! 74H is moderate, sound from the ground up with a very long, feminine, smooth front. A big bodied easy keeping female with great potential to out produce herself. When you analyze this female, it is hard to pick a hole in her phenotype. Once again, she stems from the "WAR Diva M704" cow family . . . 'Sheza Dandy.' This line of females is always known for quality and convenience traits. This mating boasts both high calving ease and high growth traits. Harlow 74H will sell bred to the current Reserve National Champion Bull 'Double Up.' OCV and BQA certified. You can build your future breeding program around this one!

bred AI to WHF JS CCS Double Up G365, ASA#3658592 on 3/29/21

consignor: CLO Simmentals



CLO Harlow 74H



SSC Sheza Heartbreaker 32H sold in the 2020 Stars and Stripes sale at the side of her dam. She went on to be named Division Champion at the 2020 Mississippi State Fair.



SSC Shining Shelly 217G sold at the side of her dam in the 2019 Stars and Stripes sale for \$5,000. She went on to be named Grand Champion Simmental Female at the 2019 Mississippi State Fair and later sold half interest for \$13,000 (\$26,000 valuation) on a \$5,000 pair.

CUSTOMER SUCCESS

25 

Simme Valley Hallelujah

2/1/20 • 3702760 • TC3H • ADJ BW: 96

TKCC Classified

Simme Valley Calypso

Purebred SM

CE	BW	WW	YW	MCE	MILK	MWW	MARB	REA	API
10	1.8	83	126	3.6	22	64	-0.01	0.84	123

- A grand-daughter of 3T Trinity, 14 year old daughter of Miss Power Lass K1. This blazed face beauty has super clean lines. With the cow family behind her and sired by Classified, she should make a great cow to go into the top end of most herds. She will be hard to resist, especially with her sweet personality. She will be bred to OMF Epic. Homozygous Polled and Homozygous Black. BVD-PI negative. Herd is BQA Certified.

bred AI to OMF Epic, ASA#3317371

consignor: Simme Valley Simmentals



Simme Valley Hallelujah

26 

DPF Ms Up The Price

2/5/20 • 3864644 • H081 • ADJ BW: 78

SC Pay The Price C11

STCC Ms Upping Serena

Purebred SM

CE	BW	WW	YW	MCE	MILK	MWW	MARB	REA	API
6	3.3	84	124	0.9	19	61	0.08	1.14	118

- If you are into cow families then be sure to look up, Ms Up the Price on sale day. She has a real nice look to her. If you are into cow families this heifer should be at the top of your short list. She is out of the \$76,000 valuation, STCC Ms Upping Serena and sired the National Champion SC Pay the Price. This is a heifer that will draw some attention and make you some money so don't miss out.

consignor: Stewart's Simmental Cattle & Puderbaugh, Dean



DPF Ms Up The Price

STCC Ms Upping Serena— ref. dam



27 

Simme Valley Hanalei

2/16/20 • 3702757 • ZD3H • ADJ BW: 117

W/C BF Innocent Man

SimmeValley Dizzy

Purebred SM

CE	BW	WW	YW	MCE	MILK	MWW	MARB	REA	API
7	3.4	64	99	3.8	24	56	-0.03	0.7	108

- Hanalei is a powerful, big footed, stout boned, full ribbed yearling – with a sweet front end. Granddam is 3T Trinity, 14 year old daughter of Miss Power Lass K1, our donor flushed in coop with Hudson Pines Farm. Homozygous Black and Homozygous Polled by pedigree. BVD-PI negative. Farm is BQA Certified.

bred AI to OMF Epic, ASA#3317371

consignor: Simme Valley Simmentals



Simme Valley Hanalei

28

CBSF Pocahontas

2/22/20 • 3724518 • H36 • ADJ BW: 96

W/C HOC HCC Red Answer 33B

Remington Lock N Load 54U

Miss Werning KP 8543U

C & A Blossom

ER Big Sky 545B

C & A Macy

Purebred SM

CE	BW	WW	YW	MCE	MILK	MWW	MARB	REA	API
10	1.5	73	105	5.4	25	62	0.16	1.11	134

In a moment of weakness, we decided to offer Pocahontas to you. Anyone who stops by the farm finds her. They notice her high neck set, feminine wedge shape, soggy belly and that stunning red baldy wrapper is just the icing on the cake. If you need more convincing, she's a direct daughter of Red Answer, whose semen is limited and expensive! On the bottom side, you'll see the cow maker, Big Sky! Her dam has been a wonderful cow for us: perfect uddered, fertile and gentle, in a moderate 1500 lb. red hided package. Oh yes, Pocahontas was shown once and claimed Reserve Champion Simmental Heifer! Seller retains the right to one successful flush, with a minimum of six transferable embryos.

consignor: Creek Bend Simmental Farm



CBSF Pocahontas

29

CLO Hope 6H

2/28/20 • 3749972 • 6H • ADJ BW: 77

CCR Wide Range 9005A

S D S Graduate 006X

CCR Ms Apple 9332W

PRS Delicious U8006

HC Hummer 12M

WHF Summer S240

Purebred SM

CE	BW	WW	YW	MCE	MILK	MWW	MARB	REA	API
13	1	80	122	7.3	15	55	0.01	1.11	133

Hope 6H represents a total outcross to many of her CLO Simmental herdmates. This mating was done with a specific purpose in mind. After seeing her close relative, WHF Summer 365C, as a calf and as a bred I decided to try to replicate this within our program. The first time resulted in one of the high selling bulls at the PA Performance Bull Test in 2020. Now we offer the female counterpart in the 'Stars & Stripes' sale. I believe Hope 6H has a bright future in her new herd. She is moderate in her design, sound structured, and a powerhouse of genetic and phenotypic potential. Certainly a big bodied, easy keeping quality brood cow in the making. Balanced EPD's across the board. This prospect will be hard to part with. Will sell bred to the prominent sire WLE Copacetic. OCV and BQA certified. Buy with confidence!

bred AI to WLE Copacetic E02, ASA# 3299037 on 3/29/21

consignor: CLO Simmentals



CLO Hope 6H

30

GRTF Miss Leap 11H

3/2/20 • 3761861 • GT11H • ADJ BW: 78

HPF Quantum Leap Z952

HTP/SVF Duracell T52

RP/MP Right To Love 015U

GRTF Miss Arielle

GCF Mr Amigo

GRTF Miss Tracy

Purebred SM

CE	BW	WW	YW	MCE	MILK	MWW	MARB	REA	API
10	2.6	82	115	4.7	19	60	0.04	0.93	121

Here is an awesome solid black Quantum Leap daughter out of a tremendous Amigo Female. I commit to selling my top females in Stars and Stripes and Miss Leap sure fits the mold! Beautifully made in her feet and legs, clean jointed, smooth boned, and hits her track flawlessly. She is so maternal made in her head and neck, comes out of her point of shoulder high and correct, nice angle to her front 1/3 and looks like a PB should. She balances up near perfect and has that nice big swoop to her rib cage with plenty of mass on both ends. Miss Leap will tote a show halter right to the donor pen and be the cow that you tell all your friends about! This one is a hole free type of female. She didn't want to cooperate very good in the picture pen but I'll personally guarantee her quality all day long, and when you see her in person you will too! Quantum Leap has never been hotter and this one will just help add another star next to his name! Serious earning potential here! Will be bred to Lover Boy by sale day.

bred AI to THSF Lover Boy B33, ASA#2983443

consignor: Pine Creek Show Cattle



GRTF Miss Leap 11H



OEF Right To Love H4

31

OEF Right To Love H4

3/8/20 • 3691678 • H4 • ADJ BW: 90

HPF Tradecraft D010

OEF Eve E10

- JF Milestone 999W
- RP/MP Right To Love 015U
- MVS Hot Rod
- OEF Princess Elsa

Purebred SM

CE	BW	WW	YW	MCE	MILK	MWW	MARB	REA	API
5	5.4	88	129	3.9	24	67	0.12	0.84	117

- A powerful and flashy heifer that's ready for the show ring in 2021! She's big hipped, deep bellied, and well balanced. She won the Simmental class at the Twin Tiers Beef Classic. Her best years will be as a cow. She comes from a very maternal line of females who are very fertile with great udders. Halter Broke.

consignor: OEF Simmental



OEF Ms Optimal H3

32

OEF Ms. Optimal H3

3/8/20 • 3691639 • H3 • ADJ BW: 83

HPF Optimizer A512

CWSF Sweet Caroline

- JASS/JS Optimizer 58X
- HPF Rachels Dream X590
- CLO Absolute 8A
- CWSF Angie A23

Purebred SM

CE	BW	WW	YW	MCE	MILK	MWW	MARB	REA	API
11	2.5	84	131	4.2	17	59	-0.11	0.89	119

- Ms. Optimal is sired by HPF Optimizer A512 and bred to have explosive growth. Her EPDs and individual performance back that up. Her Average Daily Gain EPD is in the top 15% of the breed. Weaning and yearling weight EPDs both in the top 25%. She weaned off her dam at 620 lbs at 180 days old. Take this heifer home and count on a heavy calf being weaned off her each fall!

consignor: OEF Simmental



SSC Marvelous Lady 312H

33

SSC Marvelous Lady 312H

3/12/20 • (3852677) • 312H • ADJ BW: 89

TJSC Hammer Time 35D

FBF1/SF Glorious Lady

- Mr TR Hammer 308A ET
- TJSC So Sweat 104X
- FBF1 Combustible
- FBF1 Gorgeous Lady

Purebred SM

CE	BW	WW	YW	MCE	MILK	MWW	MARB	REA	API
11	2.3	73	110	4.15	14	51	0.03	0.78	118

- Marvelous Lady is an embryo heifer out of the Reserve National Champion, Hammer Time and the gorgeous baldy donor Glorious Lady. When you see Marvelous Lady you will have to admire her for her long spine, stout hip and pretty front end, along with her beautiful bald face. This heifer will have a bright future no matter where she ends up.

consignor: Stewart's Simmental Cattle

34

PVSM Wildflower

3/24/20 • 3861575 • H10 • ADJ BW: 81

HPF Tradecraft D010

PVSM Miss Shenandoah

JF Milestone999W
RP/MP Right To Love 015U
CSCX Bandwagon 513A
PVSM Y56

3/4 Blood SM

CE	BW	WW	YW	MCE	MILK	MWW	MARB	REA	API
7	4.2	82	121	4.2	19	60	0.13	0.66	103

- If you love wild color – check out PVSM Wildflower. She is thick, powerful, sound, and super easy keeping. Her dam is a powerhouse of a cow and we fully expect Wildflower to follow in her footsteps. Since she is heterozygous black and full of chrome, mating decisions for her will be so much fun to make – red, black, clubby – whatever you like! Let PVSM Wildflower bloom in your pasture!

consignor: Powell Valley Simmentals



PVSM Wildflower

35

ESS Hanna H42

3/25/20 • 3710546 • H42 • ADJ BW: 89

OBCC CMFM Deplorabulld148

Lazy H Sheza Dandi T46

W/C Executive Order 8543B
Lazy H/Adkins Blkstar Z15
CNS Dream On L186
JBH Sheza Dandy

Purebred SM

CE	BW	WW	YW	MCE	MILK	MWW	MARB	REA	API
13	-0.1	71	106	5.7	21	57	-0.04	0.84	119

- A March baby that can really strike an eye with her appealing pose. Smooth and correct on the move. She has all the right pieces for developing into a great breeding addition into any herd. This halter broke heifer has an extremely sweet disposition and would make a great junior prospect. BVD-PI negative.

consignor: Elmside Farm



ESS Hanna H42

36

OEF Sparkle H8

4/9/20 • 3702676 • H8 • ADJ BW: 58

SVJ Outback E18

ESS Cricket CAX37

Adkins/Lazy H Blk Star
SVJ Light My Fire X18
GLS New Direction X184
ESS Ava AX37

Purebred SM

CE	BW	WW	YW	MCE	MILK	MWW	MARB	REA	API
11	0.9	58	87	4.6	16	45	-0.05	0.74	108

- A moderate heifer who is backed by two great cow families, X37 from Elmside farm and SVJ Light My Fire. Sparkle is a powerhouse with great legs and hair. She already has experience in the show ring and is fully halter broke. With her unique markings and sweet disposition, you can't go wrong with this one! To top it off, she has a red gene.

consignor: OEF Simmental



OEF Sparkle H8

37



GRSM Order of Fire 420H

4/20/20 • Pending • 420H • ADJ BW: 70

W/C Executive Order 8543B

EKHCC Red Jewel 760

W/C United 956Y

Miss Werning KP 8543U

SVF/NJC Built Right N448

EKHCC Crown Jewel 523

Purebred SM

CE	BW	WW	YW	MCE	MILK	MWW	MARB	REA	API
11	1.25	81	120	5.5	25	66	0.15	0.85	128

• Oh my! Where do we start here? This stunning redhead is a direct daughter of Red Jewel, one of the leading red donors in the breed, who has produced multiple high sellers for her owners and many others. A full sister to Order Of Fire sold in the North American Sale in Louisville for \$40,000. Another maternal sister by secret weapon topped this sale a few years ago. Her sire is the ultra popular Executive Order. In person, 420H is the perfect combination of power and style being square hipped, deep sided, and ties into a cool front. We're super excited to see what happens with this show heifer / donor prospect after the gaval falls on May 1st.

consignor: Green Ridge Simmentals

38



HFSC Leap Of Faith HH15

5/2/20 • 3796057 • HH15 • ADJ BW: 85

W/C Loaded Up 1119Y

HPF Promise E080

Remington Lock N Load 54U

Aubreys Black Blaze III

LLSF Uprising Z925

J2 Promising Purple Y07

Purebred SM

CE	BW	WW	YW	MCE	MILK	MWW	MARB	REA	API
10	2.6	76	114	6.1	20	57	0.02	1.04	117

• This young pretty made Loaded up heifer should not be looked over. Her dam, A Hudson Pines Promising Purple, Uprising daughter had a very successful show career in the northeast winning both breed shows and jackpot shows. Feminine, sound on her feet, fluid in motion, and deep bodied. She is power house package. Choose to show her or add this pedigree package to your herd, either way she will not disappoint you. Hillcrest Farm is BQA certified and BVD tested negative.

consignor: Hillcrest Farm

39



PCSC Relentless Style 22H

6/6/20 • 3864298 • PC22H • ADJ BW: 73

Triple M Relentless 02F

PCSC Showin' Style 13F

W/C Relentless 32C

GRTF Miss Cinderella

Silveiras Style 9303

PCSC Show Stopper12D

1/2 Blood SM

CE	BW	WW	YW	MCE	MILK	MWW	MARB	REA	API
11	1.3	67	94	4.5	16	50	0.28	0.44	118

• Another later born 1/2 blood daughter out of my up and coming Relentless son herd sire. She is made right for the times. Correct in her feet and legs, moderate in her frame, and packed with muscle and performance. We love her type and kind! Really attractive in her make up and profile, has a big ole' swinging belly and is just flat good cattle! Her "Style" Dam is a heck of an Angus cow and mated awesome for a half blood. Another one ready for the show ring on her way to the front pasture. Easy keeping, easy doing, maternal made and the first calf of many to sell out of my Relentless son who I think is only getting started here! A sure fire money maker here!

consignor: Pine Creek Show Cattle



GRSM Order of Fire 420H



HFSC Leap Of Faith HH15



PCSC Relentless Style 22H

40

PCSC County Sass 23H

6/28/20 • 3864291 • PC23H • ADJ BW: 87

Geff County O

PCSC Burnin' Sass 9B

- W/C Loaded Up 1119Y
- Ruby NFF Rhythm 475B
- PCSC Burnin' Fatt Z6
- PCSC Sassporilla Z3

3/4 Blood SM

CE	BW	WW	YW	MCE	MILK	MWW	MARB	REA	API
8	3.5	80	123	5.7	20	59	0.02	0.81	113

If you're serious about show cattle or just like them the right kind then this later born heifer is one that you, and everyone else, is going to notice over and over! I love my County O calves and "Sass" is no exception. This late June is simply a Smoker! Awesome at the ground, huge footed, big legged, tremendous bone structure... soft and fluid in her movement. She has great mass all the way through, has an absolute monster of a midsection, rib shape and belly for days! She is super clean and attractive in her head and neck design and profiles 24/7! If looks could kill, I won't make it to sale day because I find myself staring at this heifer daily! She's out of an awesome half blood cow, backed by monster Angus cows and we all know what County O is doing all across the country. This 3/4 blood, is going to be at the backdrop regularly! Don't miss a great one!

consignor: Pine Creek Show Cattle



PCSC County Sass 23H

41

PCSC Brilliant Look 29H

7/3/20 • 3864294 • PC29H • ADJ BW: 74

IRCC All Right 326A

PCSC Zoey's Brilliance 6C

- SVF/NJC Built Right N48
- Inidan River Spirit
- S A V Brilliance 8077
- PCSC Lookouts Zoey Z2

1/2 Blood SM

CE	BW	WW	YW	MCE	MILK	MWW	MARB	REA	API
13	0.1	60	85	7.1	20	50	0.28	0.35	123

Well when you have 85% bull calves you're left with selling the younger cattle and that's what we're up against this year. This July 1/2 blood may have the biggest future in the show ring in the fall as any of them and may be my favorite! Talk about good looking and crazy necked. This one is a freak up front but balances up nicely and carries that balance throughout. She's great at the ground, sound and correct moving and poses that great rib shape and structure. I can't express how attractive and clean this one is up front, so good in her shoulder, with an absolutely beautiful head. This one gets better every day and I think her future is so big. Backed by great Angus cows all the way through and out of the IRCC ALL Right bull whose females are attractive, functional, productive, fertile, and maternal matriarchs. Don't miss the opportunity on a stand out here!

consignor: Pine Creek Show Cattle



PCSC Brilliant Look 29H

42

PVSM Lexington

8/23/20 • 3861576 • H15 • ADJ BW: 76

HPF Optimizer A512

PVSM Cherokee Princess

- JASS/JS Optimizer 58X
- HPF Rachels Dream X590
- Dameron First Impression
- Cherokee Rose

5/8 Blood SM

CE	BW	WW	YW	MCE	MILK	MWW	MARB	REA	API
9	2.3	81	133	2.6	16	56	-0.05	0.75	111

Lexi is a powerful Simmental heifer that excels at growth. She is thick, sound, clean fronted, has a great disposition, and is halter broken. Enjoy the longevity of this cow family – her granddam, Cherokee, is 16 years old and still in our herd. PVSM Lexington's powerful growth and pedigree will work with many different mating options.

consignor: Powell Valley Simmentals



PVSM Lexington



PVSM Concord H17



HFSC Lady Prime HH27



GRSM Burning Spice 315GA



SSC Pebbles 330Z - ref. dam

43

PVSM Concord

9/5/20 • 3861577 • H17 • ADJ BW: 61

DMCC/WOOD Fully Loaded 39D

Remington Lock N Load 54U
Aubreys Black Blaze III
Hooks Shear Force 38K
PVSM June Bug

PVSM Cricket

Purebred SM

CE	BW	WW	YW	MCE	MILK	MWW	MARB	REA	API
16	-2.2	64	93	8.2	24	57	0.1	1.12	144

• Sweet little angel heifer is what we call this girl! Perfect for a first time showman, Concord is halter broken and will be fun to show for 2 years. She is a granddaughter of our donor cow June Bug – just ask Betty Bosley how much she likes her June Bug granddaughter! We can't ask for better calving ease EPDs – top 5% calving easy, top 1% birth weight, and top 20% API. Her being homozygous polled and having a blaze face just completes the package! Whether you show her or not, PVSM Concord will be an asset to your breeding program for many years to come!

consignor: Powell Valley Simmentals

44

HFSC Lady Prime HH27

9/23/20 • 3856943 • HH27 • ADJ BW: 84

Flyiung B Cut Above

FB Prime Cut456L
Dillons Ms Pretty Woman
RGRS SRG Two Step 20Z ET
HPRP Lady Prime 054U

HPF Lady Prime 401B

3/4 Blood SM

CE	BW	WW	YW	MCE	MILK	MWW	MARB	REA	API
9	1.9	62	92	6.4	20	51	0.08	0.37	121

• Backed by powerhouse genetics descending from Hudson Pines "Lady Prime" cow family, this stylish feminine heifer is ready to make her debut. This family has a list of banners for us including, her dam placed in the top ten overall at the 2015 AJSA Eastern Regional and her half sib Reserve Division Champion at the Simmental Breeders Sweepstakes in 2019. She combines style, volume, dimension all in a sound moving package. Take her home to the show ring and she will perform for your program. Hillcrest Farm is BQA certified and BVD tested negative.

consignor: Hillcrest Farm

45

GRSM Burning Spice 315GA

3/15/19 • 3597531 • 315GA • ADJ BW: 60

SSC Mr. Weapon 55D

Remington Secret Weapon 185
Lazy H Shez Too Cool W58
SVF/NJC Built Right N48
HPF Perfection W568

SSC Pebbles 330Z

Purebred SM

CE	BW	WW	YW	MCE	MILK	MWW	MARB	REA	API
12	1.9	69	98	6.2	18	53	-0.08	0.72	118

• What a redhead here! She is one of the twin natural calves out of our Pebbles donor that is no stranger to the Stars and Stripes Sale being a high seller in the 2017 sale. Her sire, Mr Weapon has done a great job for our program, throwing us super high quality calves. Its no secret that red baldies are hot right now and here is a gorgeous one. 315GA reminds a lot of her mother. She is made to last a long time and is bred up to the exciting County O for a fall calf.

consignor: Green Ridge Simmentals

46

PVSM Live Free

9/3/19 • 3764218 • G22 • ADJ BW: 94

Hook's Broadway 11B

PVSM Black Hawk

- └ MCM Top Grade 018X
- └ Hook's Water Lily 89W
- └ W/C Lock Down 206Z
- └ PVSM Firebird

Purebred SM

CE	BW	WW	YW	MCE	MILK	MWW	MARB	REA	API
5	4.3	84	130	2.9	26	68	0.25	0.74	128

• PVSM Live Free is a homozygous polled, halter broken purebred that has performance and soundness handed down to her through generations of productive cows. Hooks Broadway 11B has done an excellent job for us in siring sound calves with a ton of growth and great dispositions. Liv has an extremely smooth shoulder, and a lot of natural thickness and rib shape.

bred AI to CCR Wide Range 9005A due 9/4/21

consignor: Powell Valley Simmentals



PVSM Live Free

47

Simme Valley Gizelle

9/7/19 • 3702745 • 03TG • ADJ BW: 80

W/C BF Innocent Man

Simme Valley Trinity

- └ W/C No Remorse 763Y
- └ Miss Werning 174Y
- └ Ellingson Black Perfector
- └ B&B Miss Power Lass K1

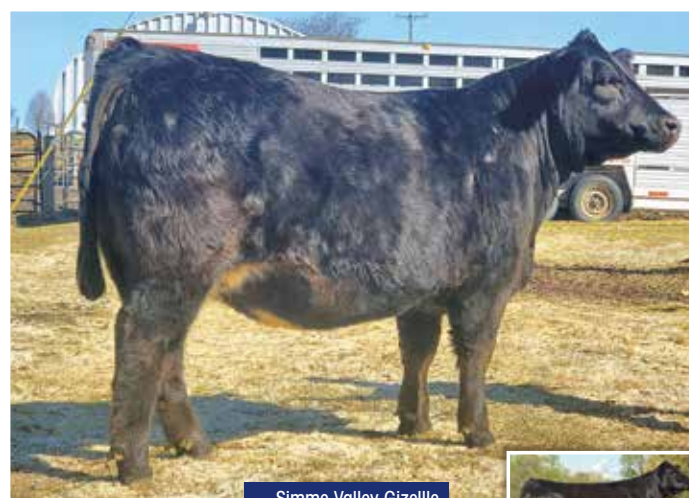
Purebred SM

CE	BW	WW	YW	MCE	MILK	MWW	MARB	REA	API
11	1.4	62	92	5.1	24	54	-0.03	0.68	112

• 03TG Gizelle is a purebred that is sensible in her frame size, bold in her center body shape, on a structurally correct set of legs, with a wide base. She is a grand-daughter of Miss Power Lass K1, donor cow. Gizelle's dam, 3T Trinity is the deepest, thickest cow in the herd and is still producing at the age of 14. She was shown by a junior last summer. Homozygous Polled and Homozygous black. BVD-PI negative. Farm BQA Certified.

bred AI to W/C Executive Order 8543B due 9/1/21

consignor: Simme Valley Simmentals



Simme Valley Gizelle



B&B Miss Power Lass K1 - ref. granddam

48

MVS Gina G3

9/21/19 • 3654161 • G3 • ADJ BW: 74

SVF Allegiance Y802

MVS Dew Drop Y6

- └ Mr NLC Upgrade U8676
- └ Double R Miss 29G T18
- └ HTP SVF IN DEW TIME
- └ MVS Callie

Purebred SM

CE	BW	WW	YW	MCE	MILK	MWW	MARB	REA	API
14	0.5	82	116	7	18	59	0	0.87	122

• ADJ WW: 774 • ADJ YW: 1,086

• A double black – double polled Purebred heifer bred-up for a early fall calf due 18 September, 2021. Gina ranks in the 15th percentile nationally for calving ease and ranks in the top 25% for birth weight. Bred AI on 7 December, 2020 to GW Triple Crown 018C (ASA #2954741) Gina is tested safe in calf to the AI date. No exposure to other bulls. Projected calf EPD's are in top 10% for API and Terminal Index, top 25% for calving ease and top 20% for Birth Weight, Weaning Weight and Yearling Weight. Gina was born, raised and bred on Mountain View Farm under BQA standards and she tested negative to BVD-PI.

bred AI to GW Triple Crown 018C, ASA# 2954741 on 12/7/20

consignor: Mountain View Simmental



MVS Gina G3



MVS Georgia G2

49

MVS Georgia G2

9/19/19 • 3654162 • G2 • ADJ BW: 75

TNT BCR Unified B203

MVS Lady Arya

3/4 Blood SM

CE	BW	WW	YW	MCE	MILK	MWW	MARB	REA	API
13	0.3	82	125	8.2	24	65	0.15	0.68	120

• ADJ WW: 774 • ADJ YW: 1,121

• A double black – doubled polled SimAngus heifer bred-up for a fall calf due 22 Sep, 2021. Georgia carries above average EPDs for calving ease and birthweight and ranks in the top 25% for the weaning and calving weight of her calves. Bred AI on 11 December, 2020 to TJ Cowboy Up 529B (ASA #3654162). Georgia is tested Safe-in-calf to the AI date. No exposure to other bulls. Projected calf EPDs rank in the top 10% for weaning weight and yearling weight EPDs and top 25% for API and Terminal Index. Georgia was born, raised and bred on Mountain View Farm under BQA standards and tested negative for BVD-PI.

bred AI to TJ Cowboy Up 529B, ASA# 3654162 on 12/11/20

consignor: Mountain View Simmental

50

CLO Get'er Done 3DG

10/1/19 • 3736478 • 3DG • ADJ BW: 81

GSC GCCO Dew North 102C

HPF/CLO Sheza Dandi 3D

Purebred SM

CE	BW	WW	YW	MCE	MILK	MWW	MARB	REA	API
11	1.7	80	112	6.1	15	55	-0.05	0.89	112

• Yet another member of the Sheza Dandy cow family 3DG brings a different twist to this strong maternal line. Her sire 'Dew North' is among the soundest structured, most athletic sires within the breed. 3DG with her baldy face and some white on her underline has a very striking presence. Beautiful design and sound structure, she will not disappoint with her phenotype. Her maternal grandsire 'Santa Fe' s a full brother to another high impact sire, 'Wide Range.' With her mild disposition this replacement female will fit into any program very easily. A female you can easily build upon for years to come. OCV, BQA Certified.

bred AI to WHF JS CCS Double Up G365, ASA#3658592 on 4/1/21

consignor: CLO Simmentals

51

MVS Guinevere G7

10/11/19 • 3654160 • G7 • ADJ BW: 70

KOCH Big Timber 685D

Salleys Ms Lucy D

Purebred SM

CE	BW	WW	YW	MCE	MILK	MWW	MARB	REA	API
15	-2.2	67	101	7	25	58	0.35	0.46	145

• ADJ WW: 650 • ADJ YW: 1,019

• A double black - double polled bred Purebred heifer ranking in the top 10% and top 3% nationally for Calving Ease and Birth Weight EPDs. Her sire is Koch Big Timber 685D who currently ranks 4th on ASA's list of Top 50 Bulls Used over the past year. Her young dam is out of Steve Watson's Rocky Hills Farm in Dawsonville, Georgia and has become one of our favorites. Guinevere is safe-in-calf to a planned mating on Christmas Day, 2020 by our bull MVS Gunther G5 (ASA # 3654165) also featured in this sale. Projected EPDs for the calf due 6 October, 2021 rank in the top 10% for Calving Ease and All Purpose Index and top 5% for Birth Weight. Guinevere was born and raised at Mountain View Farm under BQA standards and tested negative to BVD-PI.

PE to MVS Gunther G5, ASA#3654165 due 10/6/21

consignor: Mountain View Simmental



CLO Get'er Done 3DG

Lazy H Sheza Dandi T26 - ref. granddam



MVS Guinevere G7



CBSF My My My

12/1/19 • 3671520 • G33 • ADJ BW: 65

ACW Ironhide 395Y

CBSF OMA Darlin

- Remington Lock N Load 54U
- DKF Miss New Deal 205P
- GWS Ebonys Trademark 6N
- C & A Natalie

3/4 Blood SM

CE	BW	WW	YW	MCE	MILK	MWW	MARB	REA	API
13	-1.3	68	101	4.3	24	58	0.18	0.85	126

• If you appreciate consistency, look no further! Lock N Load has contributed so much for so many breeders and Trademark has sired countless donor quality females. Let's bring in the incredibly successful maternal greats, Miss Werning KP 8543U and Aubreys Black Blaze III by Al'ing "Mya" to W/C Pinnacle (the full brother to W/C Bankroll). Mya's dam and granddam are mainstays in our herd; always producing top-notch calves on the first straw. As an added bonus, Mya is halter broke and gentle. Just imagine her in a few years, as a mature cow: you'll be saying, "My My My!"

bred AI to W/C Pinnacle, ASA#3336325 on 3/29/21

consignor: Creek Bend Simmental Farm



CBSF My My My



CLO Gypsy 77G

12/31/19 • 3749969 • 77G • ADJ BW: 74

CCR Wide Range 9005A

CLO Unique 77U

- S D S Graduate 006X
- CCR Ms Apple 9332W
- Sand Ranch Hand
- CLO Star Struck 77S

Purebred SM

CE	BW	WW	YW	MCE	MILK	MWW	MARB	REA	API
14	-0.3	73	114	8.6	11	48	-0.03	1.1	127

• Gypsy is the oldest of our trio of 'Wide Range' daughters offered in the 2021 'Stars & Stripes' sale. A great place to lead off with a high calving ease, low birth weight genetic profile. Her dam once again stems from the 'Sheza Dandy' cow family through famous 'WAR Diva M704' cow. This pedigree is loaded up with a lot of outcross genetics through 'Ranch Hand' and 'Wide Range.' Gypsy herself is long in every dimension: length and femininity through her front third. A very long spined, long hip, sound structured replacement quality female. She will sell bred to 'Double Up' the current Reserve National Champion Bull from OKC. This bull has a genetic profile that just screams calving ease! Phenotypically he is backed by 'Double Down' and the great 'Summer' Cow. Get in on the ground floor with this mating. Will sell bred to 'Double UP.' OCV and BQA certified.

bred AI to WHF JS CCS Double Up G365, ASA#3658592 on 3/29/21

consignor: CLO Simmentals



CLO Gypsy 77G



HERSHEYPARK

Visit nearby
 Hershey Park & ZooAmerica
www.hersheypark.com

54



HPF Sazerac 417E

4/3/17 • 3268834 • 417E • ADJ BW: 73

TKCC Classified

HPF Sazerac 238B

3/4 Blood SM

CE	BW	WW	YW	MCE	MILK	MWW	MARB	REA	API
7	3.1	73	104	3.1	21	57	0.14	0.61	102

• Donor potential here. Saz, as she's known, was bought at the Hudson Pines Forever a Legacy sale. Her donor dam, HPF Sazerac 238B, was our favorite donor at HP. She continues to do a great job for Hilltop Simmentals. Study this pedigree and you'll see the potential in this one! She has the phenotype to back it up with a smooth build, great feet and legs, and lots of milk. Her first two calves were standouts! She's bred to Griswold's popular new stud, County O! We should probably be keeping this one but are committed to bringing our best to the sale. Halter broke.

bred AI to GEFF County O, ASA#3289219

consignor: OEF Simmental

55



KNTBF Miss Amigo

4/8/15 • 3022025 • C48 • ADJ BW: 70

GCF Mr Amigo

SAF Ugly Betty

Purebred SM

CE	BW	WW	YW	MCE	MILK	MWW	MARB	REA	API
10	1.7	77	107	5.5	17	55	-0.01	0.97	124

• C48 is known as "Lydia", named after a red-haired girl at church. Perhaps her nickname should have been "Money"! She's paid for herself over and over again! Three out of four calves have been heifers, and she has clicked with each bull we have AI'd her to. She transmits her cow power and gentle disposition to each daughter and we've decided to keep her 2020 heifer in the herd to continue utilizing her genetics. If you love red cattle as much as we do, make sure "Lydia" is headed to YOUR zip code when the bidding is done!

bred AI to Houston X01, ASA#2537200 due 8/24/21. Blood tested pregnant.

consignor: Creek Bend Simmental Farm

56



CLO Clairissa 4AC

4/20/15 • 3033290 • 4AC • ADJ BW: 84

Rubys Wide Open909W

LTS Va-Va-Voom

Purebred SM

CE	BW	WW	YW	MCE	MILK	MWW	MARB	REA	API
12	2.1	67	100	5.8	18	51	0.1	0.74	128

• This beautiful baldie has been a consistent producer for us. We sent two of her sons to the PA bull test and they indexed 107 & 101, with yearling weights of 1461 lbs & 1328 lbs, respectfully. She is a monster of a female and a favorite of many visitors. The mating to SAV America 8018, the record setting \$1.88 million dollar Angus bull, is sure to produce a stellar half-blood SimAngus calf with loads of growth and marketability.

bred AI to SAV America 8018 (Angus), ASA#3677487

consignor: OEF Simmental



HPF Sazerac 417E



KNTBF Miss Amigo



CLO Clairissa 4AC



MVS Gunther G5

9/22/19 • 3654165 • G5 • ADJ BW: 79

GW Triple Crown 018C

ESS Trisha TR13

J Bar J Nightride 225Z

GW Miss GPRD 359A

CNS Dream On L186

Renee R13

3/4 Blood SM BULL

CE	BW	WW	YW	MCE	MILK	MWW	MARB	REA	API
14	-1	73	114	9.5	24	61	0.38	0.85	153

• ADJ WW: 788 • ADJ YW: 1,251

• Another of our long-yearling bulls, semen tested and ready to go to work. Like his pen mate in this sale, Gunther is 3/4 Simmental – 1/4 Angus, heterozygous black and double polled. He is sired by the national high producing bull GW Triple Crown 018C. His dam, Elm Side Farms' Trisha TR13, has been an outstanding producer on our farm the last ten years. Gunther ranks in the top third nationally for Calving Ease, Weaning Weight, All Purpose Index and Terminal Index EPDs. Our confidence in him is such that we bred him to our G7 heifer also in this sale. Gunther was born and raised on Mountain View Farm under BQA standards and has tested BVD-PI negative.

consignor: Mountain View Simmental



MVS Gunther G5



MVS Gabriel G1

9/18/19 • 3654166 • G1 • ADJ BW: 77

W/C Rapid Fire 2101C

MVS Miss Scarlet Z16

Remington Lock N Load 54U

MOGCK Jilt 2101

WS Beef Maker R13

ESS TrishaTR13

3/4 Blood SM BULL

CE	BW	WW	YW	MCE	MILK	MWW	MARB	REA	API
13	0.2	77	120	6.2	24	62	0.33	0.95	136

• ADJ WW: 818 • ADJ YW: 1,330

• A nicely put together, long-yearling bull, semen tested and ready to go to work. 3/4 Simmental – 1/4 Angus, heterozygous black and double polled. Ranks in top third nationally for Calving Ease, Weaning Weight, All Purpose Index and Terminal Index EPDs. His sire and grandsire are breed-wide favorites Remington Lock N Load and W/C Rapid Fire. His dam and grand-dam have been top producers in our operation for many years. Easy disposition - human friendly. His predictable calving ease and efficient growth in the calves he sires makes him a valuable asset to any operation. Born and raised on Mountain View Farm under BQA standards and has tested BVD-PI negative.

consignor: Mountain View Simmental



MVS Gabriel G1



GRSM Mr Primo 13H

1/3/20 • 3782743 • 13H • ADJ BW: 75

Colburn Primo 5153

STCC Serenas Sidney 4178

Dameron First Class

Silveiras Saras Dream 1339

FBFS Wheel Man 649W

HF Serena

1/2 Blood SM BULL

CE	BW	WW	YW	MCE	MILK	MWW	MARB	REA	API
7	2.5	75	109	1.4	14	51	0.27	0.45	112

• Exciting opportunity here to add some heterosis and style to your operation. This fellow is backed by excellent genetics with the great Serena and the popular Angus sire Colburn Primo. If you are looking to add pounds and style, look no further.

consignor: Jeffery Lapp



GRSM Mr Primo 13H

60 

CBSF The Marksman

4/10/20 • 3724521 • H39 • ADJ BW: 96

Jass On The Mark 69D

C & A Natalie

W/C Loaded Up 1119Y

Jass Sable's Time 53X

WS Beef Maker R13

C&A Tiger

Purebred SM BULL

CE	BW	WW	YW	MCE	MILK	MWW	MARB	REA	API
12	1.2	74	108	7	24	61	0.17	1.02	135

• We have admired this fellow from Day 1. He's always had that cocky, show-off attitude, yet he's as gentle as they come. With so many events canceled last year, he never got the chance to be shown, but his dam was a Reserve Division Champion, who is built like Cinderella's fairy Godmother: short and chubby! The Marksman has the potential to sire those popular red baldies since, like his sire and grandsire, he is heterozygous black. We feel that The Marksman could hit the target in any program, from Purebred to Clubby, so put him to work for you!

consignor: Creek Bend Simmental Farm



CBSF The Marksman

*It's Simmental Time
in Tennessee*



2021 AJSA EASTERN REGIONAL
JUNE 2-5, 2021 | COOKEVILLE, TN

NOTES

Thanks to Curry Wagner for your hospitality
and opening the doors to your facility.



DP Sales Management, LLC
Doug & Debbie Parke
Drew & Holli Hatmaker
153 Bourbon Hills
Paris KY 40361

Presorted
First Class
US Postage
PAID
SlateGroup

FIRST CLASS

TIME DATED MATERIAL



MAY 1, 2021

STARS & STRIPES