

2020 Membership Directory

Pennsylvania Simmental Association

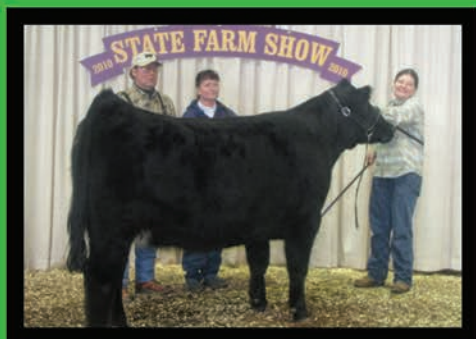


STE-WAN FARMS

Breeding today for tomorrow's success

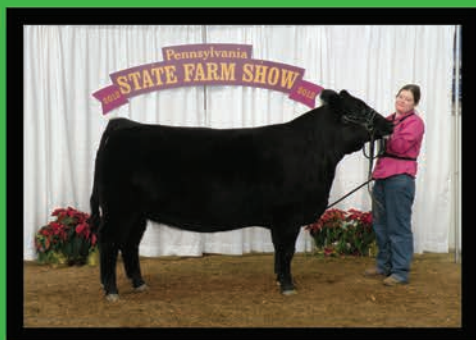


WINSLOW'S JAIL BREAK



MF SWEET DREAMS

**We breed with top A-I bulls
Broker, Lock N Load, Revival,
One Eyed Jack, Pays to Believe**



MF MISS HURRICANE



CVFC LADY UPGRADE

**Steve & Wanda Hook
Mike, Rhonda, Cheyenne Arndt**

4751 New Berlin Hwy.
Middleburg, Pa. 17842

570-837-7020
stewanfarms@verizon.net



LOLA *Purebred*
LOCK N LOAD X STF NOSTALGIA

A direct daughter of the famed STF Nostalgia, our young red donor needs no introduction. Many genetic opportunities are becoming available that will bring your program to the back drop.



**HFSC
FOXY
LADY**

SILVEIRAS STYLE X CHEROKEE STEEL LADY (OPTIMIZER)

Sim-Angus Owned with Hillcrest Farms

Watch for genetic opportunities on this many time champion, most recently the PA Farm Show!

FULL CIRCLE FARMS

JOSH & STEFF WINSLOW 724.541.0339

TOM HUFF 724.541.7465

Dayton, Pennsylvania



Green Ridge

Contact us for information

Joe Lapp • Phone: 717-363-6628



SSC PEBBLES 330Z

SVF/NJC Built Right N48 x HPF Perfection W568



SSC MISS SECRET 45B

Remington Secret Weapon 185 x Lazy H Shez Too Cool W58

Simmentals

about genetics from our donors!

120 Slate Ln, McVeytown, PA 17051



STF/HRLR DIAMOND EX81

LLSF Uprising Z925 x STF Onyx 451W



FSCI MS EXCITEMENT E097

W/C Loaded Up 1119Y x CAJS Sweet Emotion 42Z

Table of Contents

Table of Contents	4
Index to Advertisers	4
President's Message	6
PSA Officers and Directors	9
Upcoming Events.....	15
Simmental History	10-11
PSA Membership Awards.....	56
PSA Membership Listing–By Last Name	13-39
PSA Application for Membership	31
PSA Membership Listing–Cross-Referenced by Farm Name	40-41
Frame Score Chart.....	43
Gestation Table.....	41
Map and Index of Member Farm Locations	48-49
Rules and By–Laws.....	50-52
PJSA Officers/Members.....	54-55
PJSA Application for Membership.....	55
PJSA Advisors	55

Index to Advertisers

ABS.....	47	Keystone Cattle Service.....	15
American Simmental Association..	11	Ladybug Farm.....	8
Cowbuyer	45	Mast Simmental.....	53
Curry Wagner Simmentals BackCover		Mountain View Simmental.....	64r
E&R Farms	39	On The Edge Farm.....	42
Eastern States Livestock Systems	35	Porter's Lake Simmental Ranch ..	19
Eby	46	Powell's Valley Simmentals.....	12
Elk County Simmentals	17	Rugenstein Family Farm.....	64
Elm Side Farm	23	Second Chances	28
EMM Sales & Service	59	Select Sires.....	25
Forever Running Farm.....	62	Shoemaker's Simmentals.. Ins. Back	
Frey Livestock Supply	61	Simme Valley Ranch.....	63
Frosty Springs Farm.....	58	Ste-Wan Farms .. Inside Front Cover	
Full Circle Farm.....	1	Stewart's Simmental Cattle.....	32-33
Gallagher Printing	37	SVJ Farm	7
Genetic Visions	29	Trans Ova.....	5
Gettysburg Stars & Stripes	57	Wilkins and Son Equipment	60
Green Ridge Simmetals.....	2-3	Zimmerman's Custom Freezing..	17

Our special thanks to these advertisers for making this directory possible.

Please visit the PSA website, www.pasimmental.com

40

FORTY YEARS OF MULTIPLYING SUCCESS

MAKE YOUR MARK

In 2020, we will be celebrating 40 years of making our mark. During those 40 years, we've created more happy, healthy calves than anyone else in the industry. We've established great relationships with our clients and have shown our support for youth in the industry. We are proud of the last 40 years, and can't wait to continue to Multiply Success for the next 40 years.

TRANS 
genetics

WWW.TRANSOVA.COM

MARYLAND CENTER • 866-774-3162

LOCATIONS ALSO AT MILLMONT & MYERSTOWN, PA

Hello Simmental Members,

Can you believe it, 2020 is here and it looks like it's going to be an exciting year for Simmental beef cattle farmers. We have a lot of challenges in 2020 and beyond. One of the hot topics we all need to focus on is the fake meat issue. This issue will keep growing and growing larger and we as cattle producers need to work with our agricultural lobbying committees to keep this in check.

With spring right around the corner we have the Pennsylvania Bull Sale and the Spring into Excellence Simmental Sale . As we go through spring and summer try to visit the jackpot shows. Visit local fairs in your community and check out those Simmental cattle. Also remember the Pennsylvania Fall Classic Sale .

This sale has grown considerably the last several years and a great place to market some of your Simmental cattle.

Also if you're out at some of the shows, sales or fairs and you see any of the directors and you have questions talk to us there or call us any time and we would love to help.

From the entire board we wish all of you a safe and prosperous year and remember promote those Simmentals.

Your president,

Curry Wagner

BREEDING *Champions...*

SIMMENTAL & SIMANGUS GENETICS



Selected as one of the top bred heifers from our fall online sale went on to be Champion Female at the PA Farm Show 2018. Owned by Nick Barney.



TKCC Classified X HPF Daisy Mae A354, dammed by our premier young donor, big things coming from this cow family. Owned with Circle T Farm



*Wild Fires Dream X She's The One
Dam of many of our champions*



*Still producing our top show heifers each year,
many fresh matings on the way*

**Annual Online Female Sale | Mid-October
Hosted by DP Online Sales**

Duane and Valerie Snee 724-554-0446 (Valerie)
465 Ringland Ridge Road 724-263-1725 (Duane)
Amity, PA 15311 valeriemankey@earthlink.net
Call us today to discuss SVJ genetics!

www.svjfarm.com

SVJ Farm

Future is Bright at LBF



LADYBUG FARM

Home of LBF SIMMENTALS

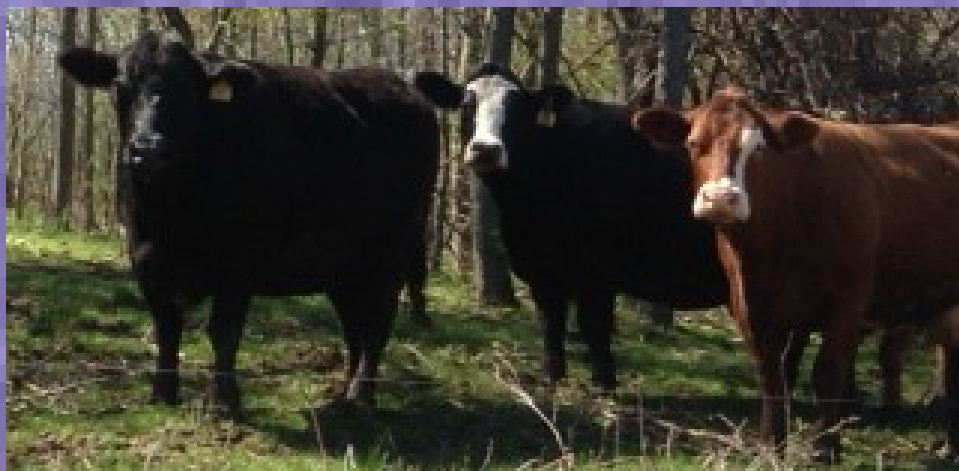
Black, Red & Traditional
Purebred Performance Cattle
With Show Appeal
AI Sired Since 1980

NEW YORK



Quality Show Heifers and Breeding Stock for Sale

Watch for Our Consignments in the NY & Pa. Bull Test Sales and
Gettysburg Stars & Stripes Sale



Ken & Mary Gumaer
716-735-7904
716-830-8149 cell



9335 Pearson Road
Middleport, NY 14105
marygumaer@aol.com

Pennsylvania Simmental Association

Officers

Curry Wagner, President

1423 Sand Beach Rd
Hummelstown, PA 17036
(717) 991-0387
cwsfarms58@gmail.com

Art Baron, Vice President

18469 Price Road
Saegerstown, PA 16433
(814) 398 8211
h18469@verizon.net

Jeremy Dobbin, Secretary

504 Ridge Road
Halifax, PA 17032
(717) 896-872
dobbin123@comcast.net

Ron Dziembowski, Treasurer

400 River Road
Hillsborough, NJ 08844
Telephone: (908) 448-7203
E-mail: RLUVSANGUS@aol.com

Directors

Art Baron

18469 Price Road
Saegerstown, PA 16433
(814) 398 8211
h18469@verizon.net

Donald Baron

18469 Price Road
Saegerstown, PA 16433
(814) 398 8211
h18469@verizon.net

Jeremy Dobbin

504 Ridge Road
Halifax, PA 17032
(717) 896-872
dobbin123@comcast.net

Steve Hook

4751 New Berlin Hwy.
Middleburg, PA 17842
(570) 837-7020
stewanfarms@verizon.net

Cliff Orley

1486 Mt. Wilson Rd
Lebanon, PA 17042
(717)269-0128
corley01@comcast.net

Elena Poliskiewicz

2364 N Delaware Dr.
Mt. Bethel, PA 18343
(570)872-4470
Poliskiewiczstockfarm@yahoo.com

Joshua Pysher

5163 Glanbrrok Rd
Stroudsburg, PA 18360
(570)856-3249
jmp369psu@hotmail.com

Greg Stewart

119 Radel Rd
Halifax, PA 17032
(717) 350-5235
wgjstewart@hotmail.com

Curry Wagner

1423 Sand Beach Road
Hummelstown, PA 17036
(717) 991-0387
cwsfarms58@gmail.com

Dan Workman

1348 Harney Road
Littlestown, PA 17340
(717) 451-2188
truckin68ds@yahoo.com

Term Expiring 2020

Art Baron
Steve Hook
Curry Wagner
Dan Workman

Term Expiring 2021

Cliff Orley
Elena Poliskiewicz
Joshua Pysher

Term Expiring 2022

Donald Baron
Jeremy Dobbin
Greg Stewart

Simmental ...

Today's Simmental on Cutting Edge

From the American Simmental Association

Bozeman, Montana

In 1968, a group of maverick cattlemen met to form the American Simmental Association. They weren't mavericks because they wanted to produce Simmental genetics, they were different because they decided to use performance records and other technologies as everyday tools for cattle and beef improvement.

As a result of their focus on performance, the first beef breed sire summary was published in 1971. This initial summary contained information on a grand total of 11 Simmental bulls! Today, millions of records are analyzed for each Simmental Sire Summary and almost 100,000 sires have records in the database.

European Simmental breeders had incorporated performance traits unique to most world cattle genetics. Few breeds could offer the combination of early puberty, growth rate, muscularity, milk production and gentle disposition found in the Simmental imports of the 1970s. When combined with America's existing Brahman and British-influenced commercial cows, farmers and ranchers had finally discovered a crossbreeding combination that optimized feeder cattle production, and offered the opportunity for great crossbred replacement heifers.

Simmental were so popular by the early 1980s, many commercial herds had become high percentage Simmental. These cattle had similar characteristics to European Simmental and thrived in high nutrition environments; however, in several areas of the U.S., it was becoming apparent that Simmental genetics needed more calving ease, less frame size and more carcass quality.

The members of the American Simmental Association responded to the call for improving these traits. Since 1984, ASA's database genetic trend proves today's Simmental sires offer greatly improved calving ease. There are numerous bulls listed in the ASA Sire Summary with high accuracy progeny proofs for exceptional direct and maternal calving ease. Now, by selecting for high calving ease EPDs, many commercial herds can safely use Simmental bulls on their heifers and cows.

Using a planned crossbreeding system, Simmental cross females are valuable replacements. Besides being among the easiest calving heifers in the business, Simmental frame scores have been dramatically decreased. The most popular Simmental bulls in the U.S. averaged frame score 6.4 in 2002 compared to a 9 in 1986. In addition, these current bulls are all solid colored and polled.

Simmental ...

Today's Simmental on Cutting Edge (continued)

**From the American Simmental Association
Bozeman, Montana**

The biggest change in beef production in the 1990s was the intense emphasis on carcass value. Branded beef programs featured products with much better value consistency. Both leanness and meat quality are and will continue to be critical factors of carcass value. The American Simmental Association is the most aggressive continental breed association in performance testing sires for carcass value.

Every bull in the ASA 2005 Sire Summary has carcass EPDs. Each year the ASA tests over 100 young sires for carcass value. In 1999, more than 2,000 carcasses from this program produced these averages: carcass wt. 782, fat thickness 0.41, REA 13.0, USDA Choice 69%, and less than 1% USDA Standard, dark cutters or heavy weight discounts. The ASA also lists the only Tenderness EPDs in the beef industry for most of the popular sires.

The breeders of the American and Pennsylvania Simmental Associations have taken a great breed and made it better. Where else can you find early puberty, great growth, continental breed muscle and easy dispositions tied to a database that identifies calving ease, moderated frame and the best marbling genetics among high growth cattle? Visit our website www.simmental.org or write for a free sire summary:

AMERICAN Simmental ASSOCIATION

**One Genetic Way
Bozeman, MT 59715**

Telephone: (406) 587-4531

Fax: (406) 587-9301

E-mail: simmental@simmgene.com

Website: www.simmental.org

INTRODUCING OUR NEW DONOR...

PVSM QUEEN VICTORIA



Sire
CNS Dream On L186

Dam
CLCC Victoria W02
"Brightie"

Contact us for
genetics out of
this exciting
young donor!



PVSM MR PRIMOO

Colburn Primo 5153 x PVSM Miss Mooey

Consigned to Virginia Beef Expo
April 17, 2020

POWELL'S VALLEY SIMMENTALS

*We produce gentle, functional cattle that perform as well
in the pasture as they do in the show ring.*

LAURIE MEYERS

470 MILLION DOLLAR ROAD, HALIFAX, PA 17032

PHONE: 717-350-2516 📍 EMAIL: LAURIE@PVSIMM.COM

Stop in or call anytime -- we love to talk cattle.
Please visit our website, www.pvsimm.com!

Pennsylvania Simmental Association

Membership Listing

Arndt, Michael and Rhonda

Cell: (570) 847-9844

Ste-Wan Farms

441 Hillside Drive, Middleburg, PA 17842

Snyder County

E-mail: farmchic3@hotmail.com

Baron, Art & Hazel

(814) 398-8211

Forever Running Farm

18469 Price Rd

Cell: (814) 720-5575

Saegerstown, PA 16433

Crawford County

E-mail: h18469@verizon.net

Beal, Twain

(301) 264-4194

Hylands Farm

14474 Mile Lane NW, Mt Savage, MD 21545

Allegany County

Bear, Jeremy, Nicholas and Orloff

(518) 929-0677

296 Newry Rd, Greenville, NY 12083

Greene County

E-mail: premierfarm@aol.com

RT 81 East to Greenville. 1/4 mile thru light on right

Benner, Fred, Kim, Ellie, and Emily

Fred: (717) 320-2303

Serenity Hills Farm

Kim: (717) 994-2540

429 Happy Hollow Road, Mifflintown, PA 17059

Juniata County

E-mail: fbenner@embarqmail.com

From US 322, PA 35 North at Mifflintown Exit, 1.5 miles.

Bertrand, Gary, Cindy, Stephanie, and John

(508) 832-8313

Hillcrest Farm

Cell: (774) 364-0130

148 Millbury Street, Auburn, MA, 01501

Worcester County

E-mail: hillcrest1011@gmail.com

Bishop, Kevin W.

(856) 358-3923

Bishop Simmental Cattle

Cell: (856) 297-3813

29 Pine Tavern Road, Elmer, NJ 08318

Salem County

Email: kbishop5@aol.com

Bosley, Jim and Betty (304) 530-6636
Buena Vista Simmentals Cell: (304) 257-3093
P.O. Box 5, Old Fields, WV 26845
Hardy County
E-mail: bvsimmentals@hardynet.com
4 miles north of Moorefield on Rt. 220, turn left on to Fish Pond Road. Physical address is 296 Fish Pond Road.

Broughton, Jonah and Abbey (585) 356-0906
Sunrise Farms
2939 Glor Road, Attica, NY 14011
Wyoming County
E-mail: sunrisefarmsny@yahoo.com

Brown, Chris and Kellee, Mollee, Tyler, and Carter (304) 366-5353
Classic Farms
50 Endeavor Lane, Fairmont WV 26554
Marion County
E-mail: classicsim@aol.com
Located off I-79 exit 132 (5 miles).

Burleigh, (Macky) Cameron (570) 493-1146
Burleigh Cattle Co
860 Great Bend Tpk
Pleasant MT. PA 18453
Wayne County
E-mail: mackyburleigh@yahoo.com

Busby, Bart (740) 269-8601
M & B Acres Cell: (330) 432-4597
601 Busby Drive, Bowerston, OH 44695
Harrison County
E-mail: buzz31@frontier.com

Bussard, Gary and Paulette (814) 257-8570
163 Pasture Road, Dayton, PA 16222
Armstrong County

Campbell, James and Jackie (724) 852-1622
Campbell Land & Cattle LLC Cell: (724) 263-0955
928 W.W. Railroad Road, Sycamore, PA 15364
Greene County
E-mail: cscfarm@yahoo.com

Upcoming Events

Pennsylvania Beef Expo and Performance Bull Test & Sale

March 27, 2020

Spring into Excellence Sale
State College, PA

March 20 - 22, 2020

Junior Jackpot Show
Harrisburg, PA

AJSA Eastern Regional Classic

June 9-13, 2020

Cookeville, TN

PSA Field Day

TBA

All cattlemen are invited to attend!

Please see our website,
pasimmental.com, for details.

AJSA National Classic

July 5 11, 2020

Grand Isle, NE

Ag Progress Days

August 11-13, 2020

Rock Springs, PA

Keystone International Livestock Exposition

September 25-October 5, 2020

Harrisburg, PA

Open Show, Junior Show,
Junior Steers

Delaware Livestock Exposition

October 10-11, 2020

Delaware State Fairgrounds
Harrington, DE

Pennsylvania Fall Classic Sale

Saturday, October 31, 2020

Simmental Sale
Waynesburg, PA

American Royal Stock Show

October 14-25, 2020

Kansas City, MO

North American International Livestock Exposition

November 3-November 19, 2020

Louisville, KY

National Western Show and Sale

January 9-24, 2021

2021 The One Simmental Sale
ASA Annual Meeting
Denver, CO

2021 Pennsylvania State Farm Show

January 2-9, 2021

Harrisburg, PA



- Custom Fitting for Show & Sale
- Herd Consultation
- Semen Sales
- Sale Advisor & Consultation
- Private Treaty Sales

CLIFF & LYNN ORLEY

1486 Mt. Wilson Rd.

Lebanon, PA 17042

(717) 964-2243

(717) 964-1862 Fax

(717) 269-0128 Cell

corley01@comcast.net

www.keystonecattleservices.com

Casilio, Butch and Denise (814) 965-5079
Elk County Simmentals Butch's Cell: (814) 335-4417
1316 Water Street Ext., Johnsonburg, PA 15845 Denise's Cell: (814) 335-2434
Elk County

Six miles north of Ridgway on Route 948, bear right. Go to bottom of hill. Take right turn before bridge on Water Street Extension. Go 1-1/2 miles. Farm on left.

Cowdrey, Bud and Lois (937) 373-3921
Charmont Farm

5592 Hermann Rd Ripley, OH 45167

Brown County

E-mail CharmontL@hughes.net

Cowell, Jim and Billie (724) 627-8271
Frosty Springs Farm Jim's Cell: (724) 986-8502

1214 Garards Fort Road, Waynesburg, PA 15370

Greene County

Billie's Cell: (724) 998-4355

E-mail: frostyspringsfarm@hotmail.com

Facebook: Frosty Springs Farm

I-79 South, Kirby Exit, go left at stop sign 2 miles, at stop sign, turn left. Go another 2 miles.

Crum, Bob and Jenny Bob: (740) 213-7727
Crum's Circle C Jenny: (814) 571-3243

36951 CR 2E, Woodsfield, OH 43793

Monroe County

E-mail: crumscirclec@gmail.com

Website: crumscirclec.com

From I70, south on OH800 for 19 miles to Malaga (flashing light), right on OH145 for 3 miles to Miltonsburg, take first right after town—County Rd 2E for 1 mile.

Daum, Fred and Suzie (814) 354-2280
Hillside Acres Cell: (814) 229-3786

21969 Route 208, Tionesta, PA 16353

Clarion County

E-mail: hillside@venustel.com

Rt. 208 2.5 miles east of Fryburg, PA.

Dobbin, Jeremy (717) 896-8723
Ridgeside Acres

504 Ridge Road Halifax, PA 17032

Dauphin County

E-Mail: dobbin123@comcast.net

From Harrisburg follow US - 22W and PA-225N to Bunker Hill Rd. Drive to Ridge Rd in Halifax

NO BULL TOO BIG OR NASTY

S
E
M
E
N

Semen Freezing since 1983



S
E
M
E
N

Semen Fertility Evaluations

ZIMMERMAN'S CUSTOM FREEZING

131 Redwell Rd., New Holland, PA 17557
Phone: 717-355-2048 Cell: 717-940-1430

www.semenfreezing.com

ELK COUNTY SIMMENTALS

Fullblood Fleckveih Simmentals
...the breed that will improve your herd

Butch & Denise Casilio
1316 Water St. Ext.
Johnsonburg PA 15845
814-965-5079 814-335-2434

Downs, David, Annette, and Sara (724) 376-7195
194 Stock Farm Road, Jackson Center, PA 16133
Mercer County
E-mail: annettedowns@ymail.com

Druck, Philip (814) 628-4422
1099 Grimes Hill Road, Sabinsville, PA 16943
Tioga County
E-mail: phildruck@yahoo.com
North of Gaines on Rt. 349; from Rt. 6 approximately 6 miles to left on Grimes Hill Road.

Dziembowski, Ron and Rhonda (908) 448-7203
Double RD Farm (908) 381-7202
400 River Road, Hillsborough, NJ 08844
Somerset County
E-mail: RLUVSANGUS@aol.com

Feight, Bradley Cell: (814) 502-8973
Feight Show Stock
2672 Mountain Chapel Road, Breezewood, PA 15533
Bedford County
E-mail: feibra60@pct.edu

Fox, Brent (717) 649-2192
FWB Simmentals
169 Dellville Road, Duncannon, PA 17020
Perry County
E-mail: bfox5@ptd.net
11 & 15 to 274 West, go approximately 1 mile to Dellville Road (on left). Go approximately .7 tenths of a mile to 169 on left.

Glass, Frank and Susan (724) 599-4612
Woodview Simmental Farm
1801 Grange Road, Blairsville, PA 15717
Indiana County
E-mail: sunnysue831@gmail.com
From Rt. 22 at Blairsville Exit take Rt. 217 North about 3 miles to Grange Road. Take left on Grange Road and go about 1 1/2 miles to farm.

Graham, Galen, Nichole, Levi, and Grace Galen's Cell: (717) 968-3643
NikLen Valley Farm Nichole's Cell: (717) 968-6635
13820 Wolf Road, Felton, PA 17322
York County
E-mail: nikkig7391@gmail.com

Porter's Simmental Lake Ranch



The Porter Family
81 Porters Simmental Lane
Waverly, NY 14892

Phone: (607) 565-2452 Fax: (607) 565-8670

E-mail: portersimm@clarityconnect.com

Web site: www.portersconcrete.com



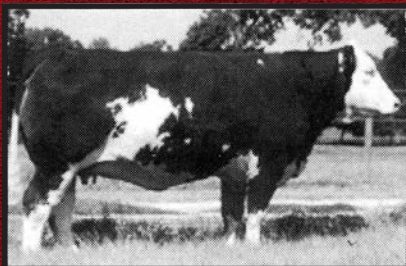
Full Fleckvieh

T2 Astrid F17



Astrid is a star in every sense of the word. Her pedigree includes the great Rachel cow family which has proved to be one of the most prolific producers of great females of any cow family in North America. She is one of our top donor cows.

Ms JMC Else G391



Else is a truly unique full Fleckvieh cow. She is an extremely long, thick, attractive, Holb daughter out of the great Luba cow. She is one of our top donor cows.

We have been fortunate to assemble a small group of quality full Fleckvieh bulls as well as excellent donor cows, some of which will be flushed for the first time this year. Calves out of our superior full Fleckvieh bulls, Hafke and Kaiser are weaning at astonishing rates.

Mr JMC Hafke F392



Hafke is the best bull Fleckvieh son alive in North America today. Here is an opportunity to buy semen out of a known son of "Hafke", the great German meat sire known for tremendous muscling.

Mr JMC Kaiser F302



Kaiser is a son out of Great Guns Karl 17C, and his dam is Adria 11A, one of the most powerful Fleckvieh cows in the breed today. He is dark red, double ring-eyed, with tremendous muscling from front to rear.

*Semen \$25 a straw, 5-straw minimum
Call us today for information about embryos.*

Griffith, Brenda, Earl and McCall

(301) 730-5450

Anvil Acres

5912 Clevelandtown Rd, Boonsboro, MD 21713

E-mail: anvilacres1@yahoo.com

Gromlich, Bruce

(610) 562-5737

SASA Farms

Cell: (610) 334-9847

121 Schappell Road, Hamburg, PA 19526

Berks County

E-mail: sasafarms@copper.net

78-61 South, go 2 miles, turn left on Schappell Road, 2 1/2 miles, farm on right.

Gumaer, Mary

(716) 735-7904

Ladybug Farm

Cell: (716) 830-8149

9335 Pearson Road, Middleport, NY 14105

Niagara County

E-mail: marygumaer@aol.com

From Rt. 31 North on Carmen Road, 1 1/2 miles left on Pearson Road; 1 mile on north side after Drum Road.

Hebel, Ken

(717) 469-2537

HEB Farms

cell (717) 460-3844

1067 Gravel Hill Road, Grantville, PA 17028

Lebanon County

E-mail: cahebel@verizon.net

Herr, Jack

(717) 507-8342

JEH Simmentals

P.O. Box 101, 105 Maple Drive, Fredericksburg, PA 17026

Lebanon County

E-mail: jehsimm@aol.com

Hook, Steve and Wanda

(570) 837-7020

Ste-Wan Farms

4751 New Berlin Highway, Middleburg, PA 17842

Snyder County

E-mail: stewanfarms@verizon.net



Pennsylvania Simmental Association

2020 Membership Directory Advertising

Advertising in the Pennsylvania Simmental Association's annual membership Directory is a great way of marketing your farm or business directly to potential customers. PSA Directories are distributed at most major livestock events, Simmental shows and sales in Pennsylvania and surrounding states, including, but not limited to: Pennsylvania Beef Expo, PSU Cow Camp, Pennsylvania Cattlemen's Field Day, Ag Progress Days, Keystone International Livestock Exposition, Pennsylvania Fall Classic Sale, Pennsylvania Farm Show, and numerous county and 4-H Fairs!

Most file formats are accepted, but any file which keeps text as vector (not flattened) is preferred.

Advertisement Sizes and Rates

Deadline: January 31, 2020

Must receive print-ready files by deadline.

Ad Sizes

Full Page*.....5.5"W x 8.5"H
Half Page.....4.5"W x 3.75"H
Quarter Page Horizontal.....4.5"W x 1.87"H
Quarter Page Vertical.....1.87"W x 3.75"H
*For full bleed, file dimensions are 5.75"W x 8.75"H. Keep important content .25" inside cut line.

Ad Rates

Black and White

Full Page (Full Bleed).....\$ 75.00
Half Page.....\$ 50.00
Quarter Page.....\$ 35.00

Color

Full Page (Full Bleed).....\$ 150.00
Half Page.....\$ 100.00
Quarter Page.....\$ 70.00

Now offering full bleed
and color advertisements!

*If you are interested in advertising in the 2020 PSA Directory,
please contact Steve Hook or Rhonda Dziembowski*

Steve Hook

Phone: 570-837-7020

Rhonda Dziembowski

Phone: 908-381-7202

Email : rluvsangus@aol.com

Thank you for your support!

Hotchkiss, Douglas & Molly

(716) 969-1553

Nazareth Hill Farm

385 Einink Rd, Clymer, NY 14724

Chautauqua County

E-mail: dhotchkissim@gmail.com

Householder, Dennis

(724) 499-5112

Cassyle Valley Simmentals

435 Jacobs Run Road, Holbrook, PA 15341

Greene County

From Waynesburg, Rt. 21 west for 11 miles to village of Rutan. Left on Jacobs Run Road for 1.2 miles.

Lapp, Joe

(717) 363-6628

Green Ridge Simmental

120 Slate Ln, McVeytown, PA 17051

Lay, William and Kathleen

(410) 679-0882

Folly Farm

Cell: (443) 307-7550

2210 Old Joppa Road, Joppa, MD 21085

Harford County

E-mail: laykb@aol.com

Lenzner, John E. and Geraldine

(412) 741-2672

Lenzner Farms

Cell: (412) 780-0701

619 Duff Road, Sewickley, PA 15143

Allegheny County

E-mail: johnlenzner@aol.com

79 North, Mt. Nebo Exit (3 miles from interstate) Duff Road.

Loht, Noah

(717) 953-2928

KNT Beef Farm

250 Road Apple Drive, McClure, PA 17841

Mifflin County

E-mail: noahloht@gmail.com

ELM SIDE FARM

Registered Simmental Cattle

Also Registered SimAngus Genetics

Show Calves and Breeding Stock for Sale

Cattle for the small Breeder,

calm dispositions

Visitors are always welcome – Call for directions



THE REYNOLDS FAMILY

Art, Barb, Roger and Darby

836 Little Dryden Rd Barn: 607-865-6888

Walton, N.Y. 13856 Cell: 607-434-3058

elmsidefarm@frontiernet.net

Lucariello, Steve and Barb (716) 761-3509

Back Road Ranch

8105 Nettle Hill Road, Sherman, NY 14781

Chautauqua County

E-mail: backroadranch@gmail.com

Mankey, Justin (724) 747-3511

23 McNeely Lane Marianna, PA 15345

Washington County

E-mail: JKMankey@fairpoint.net

Mast, Andy (740) 685-1199

Mast Simmentals

Cell: (740) 260-6620

519 Main St

Pleasant City, OH 43772

Guernsey County

E-mail: marymast65@gmail.com

St. Route 146 Pleasant City, OH 43772

McClure, C. Arnold and Linda (814) 542-4748

McClure Mills Farms

Cell: (814) 591-2125

16381 Pump Station Road, Shirleysburg, PA 17260-9735

Huntingdon County

E-mail: arnoldmcclure@gmail.com

1 mile north of Shirleysburg on Pump Station Road.

Meadows, Yvone & Bill Long (814) 654-7978

23438 Earnest Rd

Spartansburg, PA 16434

Crawford County

E-mail: longmeadows@icloud.com

Rt 77, South of Spartansburg, Turn onto Earnest Road, 2nd place on the right

Messick, Joe and Sally (717) 602-4401

Messick Farms

2835 Schoolhouse Road, Middletown, PA 17057

Dauphin County

E-mail: messick85@comcast.net

PA Turnpike, Exit 247 to Rt. 283E. 1 mile to 441 / Airport Exit. Rt. 441 N to first farm.

Metzker, Wesley, Hunter, and Keller (814) 931-2553

2nd Chances Cattle Co.

5334 Clover Creek Road, Williamsburg, PA 16693

Blair County

E-mail: wesmetzker@yahoo.com

Select THE BEST

Premier Select Sires provides the genetics you need and the service you want!



7SM105 WB **SUCCESS** F153
3402630 | Madden x Substance | PBSM
Hetero. Black | Homo. Polled

- ◆ Flexible mating choice with homo polled, hetero black genetics
- ◆ Strong cow family with generations of WW success - dam has WW ratio of 114 on 3 calves, and grandam WW ratio of 108 on 11 calves
- ◆ Great performance & structure with an outcross pedigree

CE: 15.0 BW: 0.6 WW: 73.3 YW: 110.5
MILK: 29.7 API: 148.7 TI: 84.1



7SM84 LMF **MADISON** B752
2934717 | Alumni x Lucky Man | 1/2 SM 1/2 AN
Homo. Black | Homo. Polled

- ◆ A unique pedigree cow maker!
- ◆ Strong performance SimAngus™ with outstanding Marbling & Ribeye carcass merit
- ◆ Strong set of reliable, true-to-proof genomic EPDs

CE: 11.4 BW: 1.7 WW: 71.2 YW: 117.3
MILK: 25.0 API: 166.7 TI: 88.4



7SM85 GW **TRIPLE CROWN** 018C
2954741 | Nightride x Predestined | 5/8 SM 3/8 AN
Homo. Black | Homo. Polled

- ◆ Great CE SimAngus™ sire that puts together a stellar EPD package
- ◆ Ranks in top 1 percent for ADG, Docility, API & TI, and top 2 percent Marb.
- ◆ Moderate-framed sire who offers a lot of bells and whistles

CE: 15.7 BW: -1.3 WW: 79.9 YW: 134.3
MILK: 15.4 API: 176.4 TI: 94.1



14SM3101 DMCC/WOOD **FULLY LOADED** 39D
3131823 | Lock N Load x Macho M450 BZ | PBSM
Homo. Black | Homo Polled

- ◆ The real-deal, VERY consistent, white-faced bull for phenotype
- ◆ He can make the show winner or sale topper!
- ◆ Cattle will be square-hipped and super attractive
- ◆ Available in ACCESS™ SexedULTRA female semen

CE: 11.4 BW: 0.8 WW: 58.6 YW: 88.3
MILK: 25.1 API: 130.6 TI: 67.4

CONTACT YOUR LOCAL REPRESENTATIVE TODAY!

EPDs as of 12.9.19. ™SimAngus is a trademark of the American Simmental Association.



(800) 227-6417 ♦ www.premierselectsires.com

YOUR SUCCESS *Our Passion.*

Meyers, Laurie
Powell's Valley Simmentals

(717) 350-2516

470 Million Dollar Road, Halifax, PA 17032

Dauphin County

E-mail: **Laurie@pvsimm.com**

Website: **www.pvsimm.com**

From Harrisburg, Rt. 322 West, exit on Rt. 147 North. Rt. 147 North for 4 miles. Turn right on Million Dollar Road. First farm on right.

Miller, Steve & Susie

(717)349-7366

Greystone Farm

18344 Dry Run Rd West, Spring Run, PA 17262

Franklin County

E-Mail: smiller9@embarqmail.com

Rt 75 North to town of Dry Run & make a left into town, take first left onto Dry Run Rd West

Mills, Justin

(724)689-2913

Mills Rolling Acres Farm, LLC

129 Lindner Lane

Smithton, PA 15479

Westmoreland County

E-mail: millsj87@gmail.com

Monroe, Tom and Cheryl

(301) 293-3274

Highfields Farm

11500 Meeting House Road, Myersville, MD 21773

Frederick County

E-mail: **t3monroe@xecu.net**

Orley, Cliff and Lynn

(717) 964-2243

CLO Simmentals

Cell: (717) 269-0128

1486 Mt. Wilson Road, Lebanon, PA 17042

Lebanon County

E-mail: **corley01@comcast.net**

Website: **www.keystonecattleservices.com**

South of Hershey on Rt. 117 to Colebrook, PA. East 1/3 mile on Mine Road, farm on right.

Poliskiewica, Elena

(570) 872-4470

Poliskiewicz Stock Farm

2364 N. Delaware Dr.

Mt. Bethel, PA 18343

E-mail: Poliskiewiczstockfarm@yahoo.com

Porter, Ralph E. (607) 565-2452
Porter's Simmental Lake Ranch Cell: (607) 972-7221
81 Porters Simmental Lane, Waverly, NY 14892
Tioga County
E-mail: portersimm@clarityconnect.com
Web site: www.portersconcrete.com
Three miles east of Waverly off of Route 17C.

Puderbaugh, Dean (570) 204-1967
Puderbaugh Farms
426 Talmar Rd, P.O. Box 43 Unityville, PA 17774
Columbia County
E-mail: dpuderbaughfamrs@icloud.com

Pysher, Joshua (570) 856-3249
5163 Glenbrook Rd
Strousburg, PA 18360
Monroe County
E-mail: jmp369psu@hotmail.com

Regula, Edward J. and Toni Gail (724) 439-4179
Cher-O-Kee Cattle Co. Cell: (724) 322-1813
Home of Denver Champion Lazy H Burn Right T26
P.O. Box 125, Brownfield, PA 15416
Fayette County
E-mail: rags857@gmail.com
One mile off of Route 40 (Uniontown) on Hopwood Fairchange Road.

Reynolds, Art and Barb (607) 865-6888
Elm Side Farm
836 Little Dryden Road, Walton, NY 13856
Delaware County
E-mail: elmsidefarm@gmail.com
I 88 to Exit 8 206 East go 16 miles to county Rt 47. Turn right go 3/4 mile to farm on right

.Rugenstein, Randy, and Karen (585) 398-2273
Amy and Mike Pyra -Rebecca and Tom Snyder Cell: (585) 615-8776
Rugenstein Family Farm
1848 Risser Rd Canandaigua, NY 14424
Ontario County
E-mail: RFFarm@hotmail.com
5 miles north of Canandaigua; Rte 332 to Farmington Towline Rd, turn right; Cross county Rd 8 to Risser Rd turn right; first house - farm on right

Second Chances Cattle Company

Simmental heifers, bulls, cows, and steers for sale



Uno Mas Sweetness



2000 Mr Tradecraft Solomon

Wes Metzker c. (814) 931-2553 wesmetzker@yahoo.com

Keller Metzker c. (814) 309-3963 kellermetzker@gmail.com

GENETIC VISIONS, LLC

**Providing quality Embryo Transfer services
to the Northeast for over 30 years!**

- ❖ *In clinic housing for donors*
- ❖ *On farm procedures*
- ❖ *Third party recipients available*
- ❖ *Fetal ultrasound sexing for ET clients*
- ❖ *Frozen embryos available – Call for
current pedigrees and pricing*

Levi D. Smith DVM

Mobile: 717-372-9788

Shippensburg, Pennsylvania

Runk, Randy
E&R Farms LP

(814) 542-2154
Cell: (814) 599-3377

17299 Hill Valley Road, Shirleysburg, PA 17260
Huntingdon County
E-mail: **randy.runk@gmail.com**

Runkle, Sally Messick
Messick Farms

(717) 944-1707
Cell: (717) 602-4401

180 Newberry Road, Middletown, PA 17057
Dauphin County
E-mail: **srunkle180@yahoo.com**

Schadel, Neal and Darlane

(570) 682-8562

144 Coleman Road, Hegins, PA 17938
Schuylkill County

E-mail: **chickencoop144@gmail.com**

Rt. 25; 8 miles west of Hegins. Turn right on Honeymoon Trail after Wenger Feed Mill; 1/2 mile turn right onto Coleman Church Road. Farm on left after church.

Scherich, Rodney

(724) 428-3555

Scherich's Simmental Farm

325 Wheeling Creek Road, Windridge, PA 15380
Greene County

From Waynesburg, take Route 21 West to Ryerson Station. Turn right on Wheeling Creek Road. Go one mile to first farm on left.

Shaffer, Paul M.

(814) 623-7361

1149 Pensyl Hollow Road, Bedford, PA 15522
Bedford County

Cell: (419) 349-3433

Exit PA Tpk. #146. After toll to light turn left go approximately 2 miles to stop sign turn left to 2nd farm on right uphill side of trailer park.

Pennsylvania Simmental Association
Application for Membership
www.pasimmental.com

Member Name: _____

Farm Name: _____

Address: _____

City: _____ State: _____ Zip: _____

Telephone Number: (_____) _____ County: _____

Directions to Farm: _____

E-mail: _____

Web Site: _____

I am willing to work on a committee. My preference is _____

\$40.00 Full Member _____

\$35.00 Early Bird Discount _____ *(To receive Early Bird pricing,
application must be postmarked by December 15)*

I agree to abide and be bound by the Constitution, By-Laws and regulations of the Pennsylvania Simmental Association, Inc.

Signature: _____ Date: _____

Send to:

Rhonda Dziembowski
400 River Rd - Hillsborough, NJ 08844
Phone: (774) 289-4564
E-mail: rluvsangus@aol.com

Shell

Shocked



© Annie Duncan

Semen

\$30/unit

ASA# 2880060 • Homozygous Polled • Top 1% in Breed in Calving Ease

Sire: Remington Secret Weapon 185 Dam: Lazy H Shez Too Cool W58

Make it happen...SHOCK everyone!



Contact owners, Cattle Visions, Doug Parke 859.421.6100

Canadian semen – contact Canadian Sires, Scott Bohrsen 403.370.3010

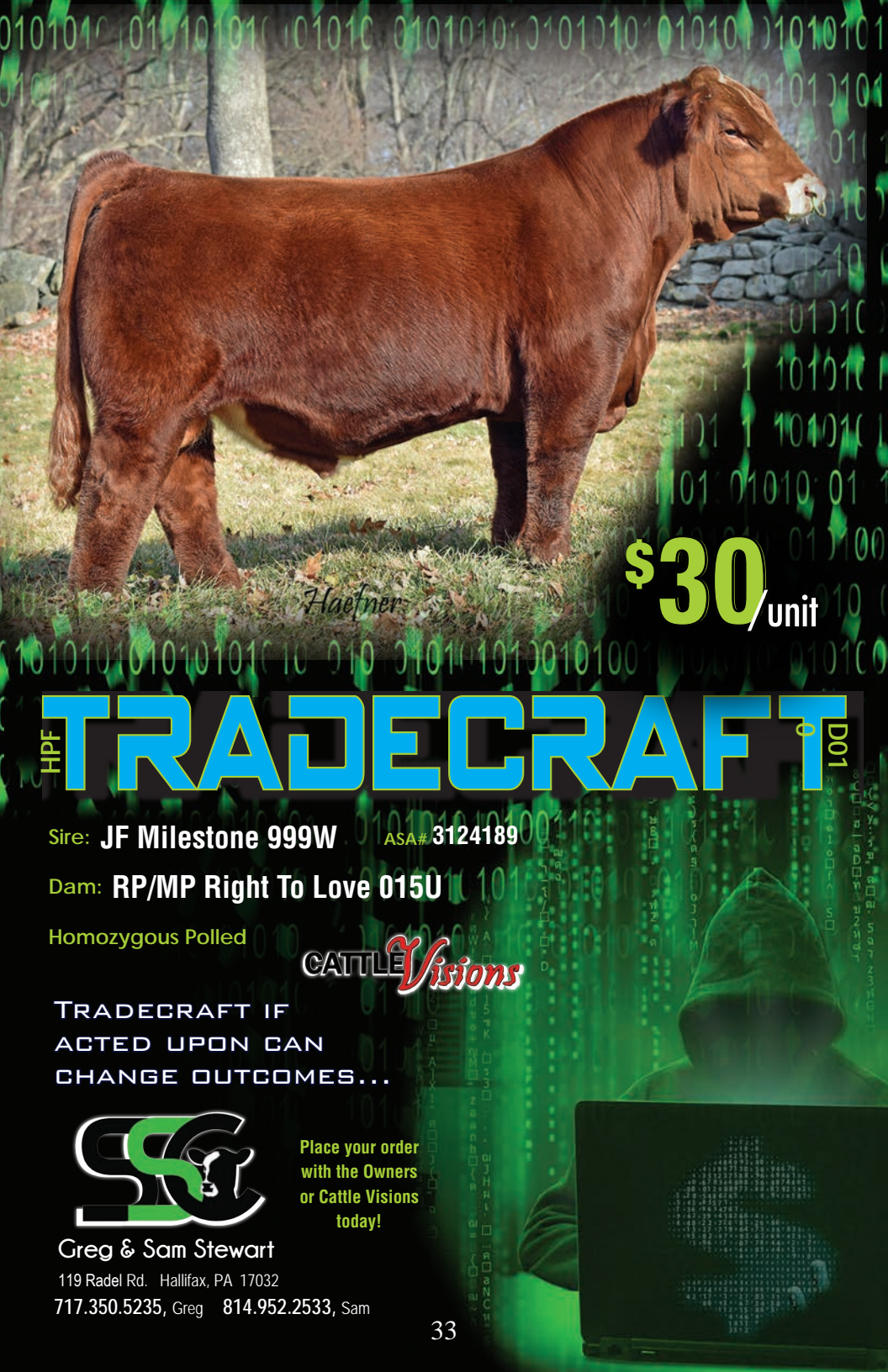
CATTLE Visions



Nashville, Tennessee
Ken Butner, Owner 615.405.6105
Randy Favorite, Manager 931.588.1210
www.kencocattle.com

Ellisville, MS
Todd Fenton 601.498.4946
Scott Fenton • 601.422.8656
e-mail fenton.farms@yahoo.com
www.fentonsimmentals.com

Greg & Sam Stewart
119 Radel Rd.
Hallifax, PA 17032
717.350.5235, Greg 814.952.2533, Sam



Haefner

\$30/unit

HPF **TRADECRAFT** [®] D01

Sire: **JF Milestone 999W** ASA# 3124189

Dam: **RP/MP Right To Love 015U**

Homozygous Polled

CATTLE *Visions*

**TRADECRAFT IF
ACTED UPON CAN
CHANGE OUTCOMES...**



Greg & Sam Stewart

119 Radel Rd. Hallifax, PA 17032

717.350.5235, Greg 814.952.2533, Sam

**Place your order
with the Owners
or Cattle Visions
today!**

Shoemaker, William E.

Cell: (412) 721-8814

Shoemaker's Simmentals

3839 Milligans Cove Road, Manns Choice, PA 15550

Bedford County

E-mail: shoesim@yahoo.com

From the PA Turnpike (East), take the Bedford Exit. Then go 30 West to 31 West. It will turn into SR 96. Continue south and turn left at White Sulphur Springs Road. Farm is 2 miles on left. From the PA Turnpike (West), the Somerset Exit. Then to 31 East to Bard. Turn right at Bard and then left at SR 96. Turn Right at White Sulphur Springs Road. Farm is 2 miles on the left.

Simcoe, Joseph & Jessica

(304) 278-8252

Cold Spring Farm

216 Cold Spring Rd, Morgantown, WV 26501

Monongalia County

E-mail: jessicanichols6952@gmail.com

170 Ex 152, 7 miles on US 195, Cold Spring Rd on the rights

Smithson, Ricky, Debbie, and Shane

(443) 463-4641

Pond View Farm

2531 Jolly Acres Road, White Hall, MD 21161

Harford County

E-mail: rick@pondviewfarm.com

Website: www.pondviewfarm.com

Valerie L. and Duane Snee

Cell: (724) 554-0446

SVJ Farm

465 Ringland Ridge Road, Amity, PA 15311

Washington County

E-mail: valeriemakey@earthlink.net

Website: www.svjfarm.com

St. Peter, Teresa

(570) 404-1110

On The Edge Farm

6408 Rte 249, Westfield, PA 16950

Tioga County

Email: tucked37@gmail.com

Traveling north take SR 249 for 12 miles farm is on right> Traveling South take SR249 for 2 miles farm is on left.

The Brand That's Built to Handle Yours

StrongHold Cattlemaster 640:

- Heavy-duty manual headgate
- Humping bar
- Side exit on both sides
- Ratchet bar side squeeze
- Flex cutting gate
- Palpation cage
- Restraining pipe
- Diamond plate floor
- Available with digital scale
- Optional wheel assembly for portability



StrongHold Heavy-Duty Alley Way:

- Easy glide Nylatron movement
- Interchangeable brackets maximize positioning
- Infinite and secure adjustment
- Ground clearance of moving parts is six inches
- Pre-punched for Alley Can't Back
- Alley adjusts from less than 15 inches to 28+ inches



StrongHold Heavy-Duty Alley Way:

- Eight-foot sweeping radius
- Spring-loaded crowding gate latch
- 14 gate locking points
- Heavy-duty towing hitch
- Folds in half to six feet wide



All StrongHold Chutes are Scale-Ready*:

- Digital read out
 - Reliable and accurate (1% error or less)
 - Low profile
 - AC/DC or battery powered
 - Weather resistant
 - Urethane outer jackets on cable connections
- *Cattlemaster 440 requires weldment option



Your local StrongHold contact:

EASTERN STATES LIVESTOCK SYSTEMS

1563 Oak Grove Road
Breezewood, PA 15533
814.977.0848



Frank "Butch" Otto
814-735-4554

Stephens, Jerry D (845) 594-9749
MCS-CMS Livestock
93 Hicks Lane, Clinton Corners, NY 12514
Dutchess County
E-mail: Jerryuphillfarm@aol.com

Stewart, Greg, Nicole, Grady, Grant and Sam Greg: (717) 350-5235
Stewart's Simmental Cattle
119 Radel Road, Halifax, PA 17032
Dauphin County
E-mail: wgjstewart@hotmail.com

Taylor, Ronald, Kathi, and Bailey (570) 256-3482
White House Farm Cell: (570) 578-3086
887 Hunlock Harveyville Road, Shickshinny, PA 18655
Luzerne County
E-mail: taylorfarm@msn.com
10 miles off US Rt. 11, on St. Rt. 4016.

Thurston Matt and Jade Gianforte (207) 357-8900
61 Route 322 Rumford, ME 04276

Varner, Gary L. and Vicki (717) 463-2513
Sorrell Acres Farm Gary's Cell: (717) 512-1891
8436 Mountain Road, McAlisterville, PA 17049
Juniata County Vicki's Cell: (717) 724-7488
E-mail: gvarner@centurylink.net

Virgili, Ethan & Rachel (724) 833-0462
ERV Cattle
890 Browns Ferry Rd, Carmichaels, PA 15320
Greene County
E-mail: erv5013@gmail.com

Vossler, William T. (Tom) and Barbara (717) 337-1615
Mountain View Farm Cell: (717) 752-6823
665 Knoxlyn Road, Gettysburg, PA 17325
Adams County
E-mail: tvossler@comcast.net

Website: www.mountainviewsimmentals.com
From Rte 15 / Rt. 30 Interchange, take Rt. 30 West approximately 5 miles through and past Gettysburg. Left on Knoxlyn. 1.2 miles on Knoxlyn Road then right turn at Farm Road.

Proudly serving Pennsylvania's Agriculture Communities since 1985.

- Sale Catalogs
- Directories
- Newsletters
- Banners
- Postcards
- Business Cards
- Sell Sheets
- Yard Signs



...and many more creative ideas!

● ————— Design • Print • Mail • Wide Format ————— ●



GALLAGHER

PRINTING, INC. 
www.gallagherprint.com

717.838.1527
Fax: 717.838.5715

601 W. Main Street
P.O. BOX 382
Palmyra, PA 17078

Wagner, Curry and Curry Jr. (717) 943-2262
Curry Wagner Simmentals Cell: (717) 991-0387
1423 Sand Beach Road, Hummelstown, PA 17036
Dauphin County
E-mail: **CWSFarms58@gmail.com**
Website: **www.currywagnerfarms.com**

Wanner, Devin J (724) 825-3093
Dan-D-Don Farm
1408 Mixtown Rd
Sabinsville, PA 16943
Tioga County
Email: **devin_wanner@hotmail.com**
Take PA349 to Sabinsville, PA turn at Mixtown Rd. Go 1/2 mile

Whipkey, Charles, Katrina, Wyatt, and Emmitt (724) 499-5859
W&E Farm
186 Tara Hill Road, Holbrook, PA 15341
Greene County
E--mail: **katrina.whipkey@yahoo.com**

White, Jeanne Cell: (607) 423-4888
Paradis, Phil (Farm Manager)
Simme Valley Ranch
6493 Stauber Road, Groton, NY 13073
Cayuga County
E-mail: **Jeanne@simmevalley.com**
Website: **www.simmevalley.com**
Route 81, Exit 12. Right on 281, left on Rt. 90. Go 5.5 miles. Left on Salt Road. 2nd left on Stauber Road.

Winslow, Josh & Steffani (724) 541-0339
Full Circle Farms
127 Rock Road, Dayton, PA 16222
Armstrong County
Email: **steffhuff@gmail.com**

Woolcock, Jerry and Ginger (570) 458-5340
Woolcock Farms
38 Reese Road, Orangeville, PA 17859
Columbia County
E-mail: **gwoolcock@gmail.com**
I-80, Exit 34, Route 42 North to Millville. At flashing light, take SR 254E 4.7 miles to Reese Road.

Workman, Dan & Stacy

Creek Bend Farm

1348 Harney Road, Littlestown, PA 17340

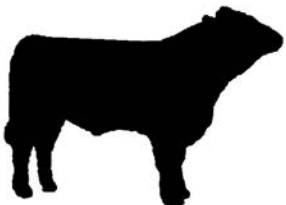
Adams County

E-Mail: **truckin68ds@yahoo.com**

From Route 15, take Gettysburg exit Route 97 South at the Gettysburg Outlets. Travel 2 miles make a right on Hoffman Home Rd. Follow 3 miles until the stop sign. Make a left on Harney Rd. Travel almost 2 miles. We're on the left

(717) 451-2188
Cell: (717)451-2295

***Incentive Program for
Pennsylvania Juniors
For details go to:
pasimmental.com***


<i>E&R Farms, Inc</i>
<i>Pure Bred Simmental</i>
Randy R. Runk
Vice President & General Manager
17299 Hill Valley Road
Shirleysburg, PA 17260
(814) 542-2154
Cell: (814) 599-3377

Membership Listing

Cross-Referenced by Farm Name

Anvil Acres	Brenda, Earl, & McCall Griffith	(301) 730-5450
2nd Chances Cattle Co.....	Wesley, Hunter, & Keller Metzker.....	(814) 931-2553
Back Road Ranch.....	Steve & Barb Lucariello	(716) 761-3509
Bishop Simmental	Kevin W. Bishop	(856) 358-3923
Buena Vista Simmentals	Jim & Betty Bosley.....	(304) 530-6636
Burleigh Cattle Co	Cameron Burleigh	(570) 493-1146
Campbell Land & Cattle LLC.....	James & Jackie Campbell	(724) 852-1622
Cassyle Valley Simmentals	Dennis Householder	(724) 499-5112
Charmont Farm	Bud & Lois Cowdrey	(937) 373-3921
Classic Farms.....	Chris & Kellee Brown	(304) 366-5353
.....	Mollee, Tyler, & Carter Brown.....
CLO Simmentals.....	Cliff & Lynn Orley.....	(717) 964-2243
Cold Spring Farm.....	Joseph & Jessica Simcoe	(304) 278-8252
Creek Bend Farm.....	Dan & Stacy Workman.....	(717) 451-2188
Crum's Circle C	Bob & Jenny Crum	(740) 213-7727
Curry Wagner Simmentals	Curry & Curry Jr. Wagner.....	(717) 991-0387
Dan-D-Don Farm	Devin Wanner	(724) 825-3093
Double RD Farm.....	Ron & Rhonda Dziembowski	(774) 289-4564
E&R Farms	Randy Runk	(814) 542-2154
Elk County Simmentals	Butch & Denise Casilio	(814) 965-5079
Elm Side Farm	Art & Barb Reynolds	(607) 865-6888
Feight Show Stock	Bradley Feight.....	(814) 502-8973
Folly Farm.....	William & Kathleen Lay.....	(410) 679-0882
Frosty Springs Farm.....	Jim & Billie Cowell	(724) 627-8271
Full Circle Farms.....	Josh & Steffani Winslow.....	(724) 541-0339
FWB Simmentals	Brent Fox	(717) 649-2192
Green Ridge Simmental	Joe Lapp	(717) 363-6628
Greystone Farm.....	Steve & Susie Miller	(717) 349-7366
HEB Farms.....	Ken Hebel	(717) 469-2537
Highfields Farm	Tom & Cheryl Monroe.....	(301) 293-3274
Hillcrest Farm	Gary, Cindy, Stephanie, & John Bertrand	(508) 832-8313
Hillside Acres.....	Fred & Suzie Daum	(814) 354-2280
JEH Simmentals.....	Jack Herr	(717) 507-8342
JMP Farms	Joshua Pysher	(570) 856-3249
Keystone Cattle Service.....	Cliff & Lynn Orley.....	(717) 964-2243
KNT Beef Farm	Noah Loht.....	(717) 543-6185
Ladybug Farm.....	Mary Gumaer	(716) 735-7904
Lenzner Farms	John E. & Geraldine Lenzner.....	(412) 741-2672
Long Meadows Simmentals	Yvonne Meadows & Bill Long	(814) 654-797
M & B Acres	Bart Busby	(740) 269-8601
Mast Simmentals.....	Andy Mast.....	(740) 685-7014
McClure Mills Farms.....	C. Arnold & Linda McClure	(814) 542-4748
MCS-CMS Livestock.....	Jerry D. Stephens	(845) 594-9749

Membership Listing

Cross-Referenced by Farm Name

(CONTINUED)

Messick Farms	Joe Messick.....	(717) 944-3500
.....	Sally Messick Runkle	(717) 944-1707
Mills Rolling Acres Farm, LLC	Justin Mills	(724) 689-2913
Mountain View Farm	William T. (Tom) & Barbara Vossler	(717) 337-1615
NikLen Valley Farm.....	Galen, Nichole, Levi, & Grace Graham	(717) 968-3643
Old Foundation Farm.....	Les & Bernie Brown	(814) 967-3503
On The Edge Farm	Teresa St. Peter	(570) 404-1110
Pine Creek Show Cattle	Matt Thurston & Jade Gianforte	(207) 357-8900
Poliskiewicz Stock Farm	Elena Poliskiewicz	(570) 872-4470
Pond View Farm.....	Ricky, Debbie, & Shane Smithson.....	(443) 463-4641
Porter's Simmental Lake Ranch	Ralph E. Porter.....	(607) 565-2452
Powell's Valley Simmentals.....	Laurie Meyers	(717) 350-2516
.....	Annie Duncan	(717) 350-2515
Premier Farm	Jeremy, Nicholas, & Orloff Bear	(518) 929-0677
Puderbaugh Farms	Dean Puderbaugh	(570) 204-1967
Rugenstein Family Farm.....	Randy & Karen.....	(585) 398-2273
.....	Amy & Mike Pyra.....
.....	Rebecca & Tom Snyder.....
SASA Farms.....	Bruce Gromlich.....	(610) 562-5737
Scherich's Simmental Farm	Rodney Scherich	(724) 428-3555
Serenity Hills Farm	Fred, Kim, Ellie, & Emily Benner	(717) 320-2303
Shoemaker's Simmentals.....	William E. Shoemaker	(814) 624-0667
Simme Valley Ranch.....	Jeanne White	(607) 423-4888
.....	Phil Paradis, Herdsman.....
Sorrell Acres Farm	Gary L. & Vicki Varner.....	(717) 463-2513
Ste-Wan Farms.....	Steve & Wanda Hook.....	(570) 837-7020
.....	Michael & Rhonda Arndt.....	(570) 847-9844
Stewart's Simmental Cattle.....	Greg, Nicole, Grady & Grant Stewart	(717) 350-5235
.....	Sam Stewart	(814) 952-2533
Sunrise Farms.....	Jonah & Abbey Broughton.....	(585) 356-0906
SVJ Farm	Valerie L. & Duane Snee	(724) 554-0446
W&E Farm.....	Charles, Katrina, Wyatt, & Emmitt Whipkey....	(724) 499-5859
White House Farm	Ronald, Kathi, & Bailey Taylor	(570) 256-3482
Woodview Simmental Farm.....	Frank & Susan Glass.....	(724) 599-4612
Woolcock Farms	Jerry & Ginger Woolcock	(570) 458-5340

**Heifers Selling
May 2nd
Harrisburg, PA**



On The Edge Farm



**Bulls Selling
March 27th
PA Furnace, PA**



Recent Additions

SVF Steel Force



SVF Steel Force



SVF Steel Force



CCF Kellie G



CCF Kellie G



Exciting Pregnancies Due 2020

Mr. CCF 20-20 x Lazy H Too Cool
SVF Steel Force x HPF Sazerac
SAV America x Fatt Butt
W/C Rapid Fire x WLE Uno Mas
HPF Tradecradt x WS Hot Beef
FAIR Lucky x Purebred Sim
WS Beef King x IRCC All Right
HPF Optimizer x CLO Absolut



**"Like Us" on Facebook
at OEF Simmental**

Jamie, Teresa, Gavin & Tucker - Westfield, PA - 570-404-1026

Our mission is to help improve your herd!

FRAME SCORE CHART

Bull Hip Height (Inches)

Months of Age	Frame Score						
	3	4	5	6	7	8	9
5	37.5	39.5	41.6	43.6	45.6	47.7	49.7
6	38.8	40.8	42.9	44.9	46.9	48.9	51.0
7	40.0	42.1	44.1	46.1	48.1	50.1	51.2
8	41.2	43.2	45.2	47.2	49.3	51.3	53.3
9	42.3	44.3	46.3	48.3	50.3	52.3	54.3
10	43.3	45.3	47.3	49.3	51.3	53.3	55.3
11	44.2	46.2	48.2	50.2	52.2	54.2	56.2
12	45.0	47.0	49.0	51.0	53.0	55.0	57.0
13	45.8	47.8	49.8	51.8	53.8	55.8	57.7
14	46.5	48.5	50.4	52.4	54.4	56.4	58.4
15	47.1	49.1	51.1	53.0	55.0	57.0	59.0
16	47.6	49.6	51.6	53.6	55.6	57.5	59.5
18	48.5	50.5	52.4	54.4	56.4	58.4	60.3
20	49.1	51.0	53.0	55.0	56.9	58.9	60.9

Heifer Hip Height (Inches)

Months Of Age	Frame Score						
	3	4	5	6	7	8	9
5	37.2	39.3	41.3	43.4	45.5	47.5	49.6
6	38.2	40.3	42.3	44.4	46.5	48.5	50.6
7	39.2	41.2	43.3	45.3	47.4	49.4	51.5
8	40.1	42.1	44.1	46.2	48.2	50.2	52.3
9	40.9	42.9	44.9	47.0	49.0	51.0	53.0
10	41.6	43.7	45.7	47.7	49.7	51.7	53.8
11	42.3	44.3	46.4	48.4	50.4	52.4	54.4
12	43.0	45.0	47.0	49.0	51.0	53.0	55.0
13	43.6	45.5	47.5	49.5	51.5	53.5	55.5
14	44.1	46.1	48.0	50.0	53.0	54.0	56.0
15	44.5	46.5	48.5	50.5	52.4	54.4	56.4
16	44.9	46.9	48.9	50.8	52.8	54.8	56.7
18	45.6	47.5	49.5	51.4	53.4	55.3	57.3
20	46.0	47.9	49.8	51.8	53.7	55.6	57.6

Simmental Gestation Table Based on 285 Days

JAN			FEB			MAR			APR			MAY			JUN			JUL			AUG			SEP			OCT			NOV			DEC			SEP			OCT																																																																																																																																																																																																																																																																																																																																																																																																																																																																																																																																																																																																																																																																																																																																																																																																																																																																																																																																																																																																																																																																																																																																										
1	13	1	13	1	11	1	10	1	13	1	12	1	13	1	13	1	13	1	13	1	13	1	13	1	13	1	13	1	13	1	13	1	13	1	13	1	13	1	13	1	13	1	13	1	13	1	13	1	13	1	13	1	13	1	13	1	13	1	13	1	13	1	13	1	13	1	13	1	13	1	13	1	13	1	13	1	13	1	13	1	13	1	13	1	13	1	13	1	13	1	13	1	13	1	13	1	13	1	13	1	13	1	13	1	13	1	13	1	13	1	13	1	13	1	13	1	13	1	13	1	13	1	13	1	13	1	13	1	13	1	13	1	13	1	13	1	13	1	13	1	13	1	13	1	13	1	13	1	13	1	13	1	13	1	13	1	13	1	13	1	13	1	13	1	13	1	13	1	13	1	13	1	13	1	13	1	13	1	13	1	13	1	13	1	13	1	13	1	13	1	13	1	13	1	13	1	13	1	13	1	13	1	13	1	13	1	13	1	13	1	13	1	13	1	13	1	13	1	13	1	13	1	13	1	13	1	13	1	13	1	13	1	13	1	13	1	13	1	13	1	13	1	13	1	13	1	13	1	13	1	13	1	13	1	13	1	13	1	13	1	13	1	13	1	13	1	13	1	13	1	13	1	13	1	13	1	13	1	13	1	13	1	13	1	13	1	13	1	13	1	13	1	13	1	13	1	13	1	13	1	13	1	13	1	13	1	13	1	13	1	13	1	13	1	13	1	13	1	13	1	13	1	13	1	13	1	13	1	13	1	13	1	13	1	13	1	13	1	13	1	13	1	13	1	13	1	13	1	13	1	13	1	13	1	13	1	13	1	13	1	13	1	13	1	13	1	13	1	13	1	13	1	13	1	13	1	13	1	13	1	13	1	13	1	13	1	13	1	13	1	13	1	13	1	13	1	13	1	13	1	13	1	13	1	13	1	13	1	13	1	13	1	13	1	13	1	13	1	13	1	13	1	13	1	13	1	13	1	13	1	13	1	13	1	13	1	13	1	13	1	13	1	13	1	13	1	13	1	13	1	13	1	13	1	13	1	13	1	13	1	13	1	13	1	13	1	13	1	13	1	13	1	13	1	13	1	13	1	13	1	13	1	13	1	13	1	13	1	13	1	13	1	13	1	13	1	13	1	13	1	13	1	13	1	13	1	13	1	13	1	13	1	13	1	13	1	13	1	13	1	13	1	13	1	13	1	13	1	13	1	13	1	13	1	13	1	13	1	13	1	13	1	13	1	13	1	13	1	13	1	13	1	13	1	13	1	13	1	13	1	13	1	13	1	13	1	13	1	13	1	13	1	13	1	13	1	13	1	13	1	13	1	13	1	13	1	13	1	13	1	13	1	13	1	13	1	13	1	13	1	13	1	13	1	13	1	13	1	13	1	13	1	13	1	13	1	13	1	13	1	13	1	13	1	13	1	13	1	13	1	13	1	13	1	13	1	13	1	13	1	13	1	13	1	13	1	13	1	13	1	13	1	13	1	13	1	13	1	13	1	13	1	13	1	13	1	13	1	13	1	13	1	13	1	13	1	13	1	13	1	13	1	13	1	13	1	13	1	13	1	13	1	13	1	13	1	13	1	13	1	13	1	13	1	13	1	13	1	13	1	13	1	13	1	13	1	13	1	13	1	13	1	13	1	13	1	13	1	13	1	13	1	13	1	13	1	13	1	13	1	13	1	13	1	13	1	13	1	13	1	13	1	13	1	13	1	13	1	13	1	13	1	13	1	13	1	13	1	13	1	13	1	13	1	13	1	13	1	13	1	13	1	13	1	13	1	13	1	13	1	13	1	13	1	13	1	13	1	13	1	13	1	13	1	13	1	13	1	13	1	13	1	13	1	13	1	13	1	13	1	13	1	13	1	13	1	13	1	13	1	13	1	13	1	13	1	13	1	13	1	13	1	13	1	13	1	13	1	13	1	13	1	13	1	13	1	13	1	13	1	13	1	13	1	13	1	13	1	13	1	13	1	13	1	13	1	13	1	13	1	13	1	13	1	13	1	13	1	13	1	13	1	13	1	13	1	13	1	13	1	13	1	13	1	13	1	13	1	13	1	13	1	13	1	13	1	13	1	13	1	13	1	13	1	13	1	13	1	13	1	13	1	13	1	13	1	13	1	13	1	13	1	13	1	13	1	13	1	13	1	13	1	13	1	13	1	13	1	13	1	13	1	13	1	13	1	13	1	13	1	13	1	13	1	13	1	13	1	13	1	13	1	13	1	13	1	13	1	13	1	13	1	13	1	13	1	13	1	13	1	13	1	13	1	13	1	13	1	13	1	13	1	13	1	13	1	13	1	13	1	13	1	13	1	13	1	13	1	13	1	13	1	13	1	13	1	13	1	13	1	13	1	13	1	13	1	13	1	13	1	13	1	13	1	13	1	13	1	13	1	13	1	13	1	13	1	13	1	13	1	13	1	13	1	13	1	13	1	13	1	13	1	13	1	13	1	13	1	13	1	13	1	13	1	13	1	13	1	13	1	13	1	13	1	13	1	13	1	13	1	13	1	13	1	13	1	13	1	13	1	13	1	13	1	13	1	13	1	13	1	13	1	13	1	13	1	

COWBUYER.COM

Online Livestock Marketing

- Live Internet Bidding
- Online Webcast of Auctions
- Pre-Bidding and Absentee Bidding
- Tag/On Farm Sales
- Online Only Auctions



Google Play



ANY DEVICE.



ANYWHERE.



ANYTIME.

SHARING THE PASSION



We understand the passion show families pass on from generation to generation. For over 80 years, we have shared that same passion through our commitment in providing lightweight aluminum trailers with stylish design, strong construction and solid resale value.



RUFF NECK shown with optional FINAL DRIVE package, aluminum wheels and spare.



Gooseneck Flatbed Trailer



Maverick LS Bumper Hitch



Big Country Truck Bodies



M.H. EBY, Inc. (Headquarters)
1194 Main St., PO Box 127
Blue Ball, PA 17506

©2020 M.H. EBY, Inc.

***Contact EBY today for more information
or to find a dealer near you.***

800-292-4752
www.mheby.com

ABS

THE WORLD LEADER IN BOVINE GENETICS



Dream On

Still the One!

- ▶ Heterozygous black, DNA tested homozygous polled
- ▶ Leading source of calving ease, phenotype and indexes for the breed
- ▶ Perennial #1 bull for registrations in the breed
- ▶ The best return on investment for your semen dollar

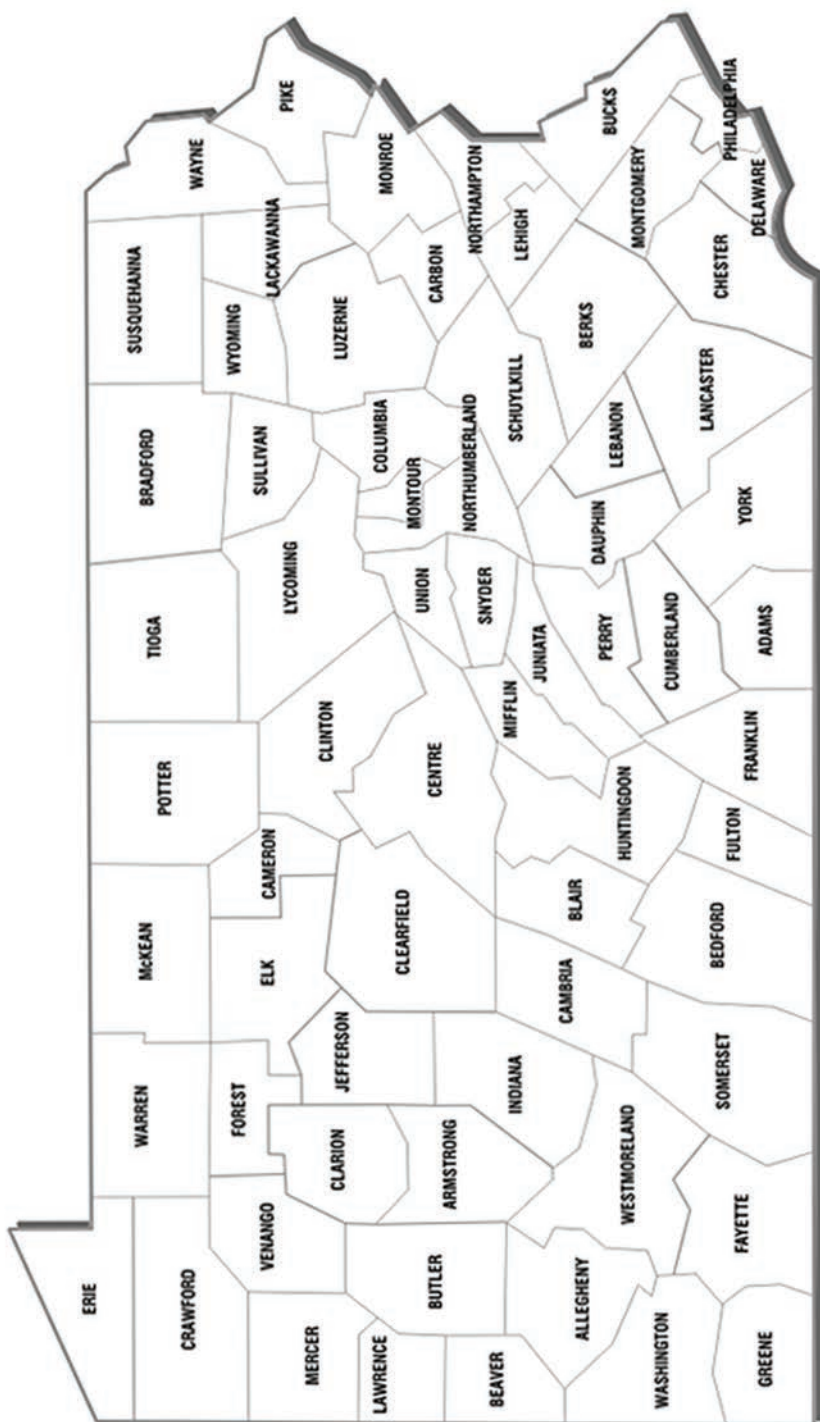


Call your local ABS rep or call 1-800-ABS-Stud

Or call Doug Baker, District Business Manager, 570-850-1831

On the web -- Complete Sire listing and updates

www.absbeef.com



Member Farm Locations

Pennsylvania...

Adams County
Mountain View Farm
Creek Bend Farm

Allegheny County
Lenzer Farms

Armstrong County
Bussard, Gary & Paulette
Full Circle Farm

Bedford County
Feight Show Stock
Shaffer, Paul M.
Shoemaker's Simmentals

Berks County
SASA Farms

Blair County
2nd Chances Cattle Co.

Clarion County
Hillside Acres

Columbia County
Woolcock Farms

Crawford County
Forever Running Farm
Long Meadows

Dauphin County

Curry Wagner Simmentals
Dobbin, Jeremy
Messick Farms
Powell's Valley Simmentals
Stewart's Simmental Cattle

Elk County

Elk County Simmentals

Fayette County

Cher-O-Kee Cattle Co.

Franklin County

Greystone Farm

Greene County

Campbell Land & Cattle LLC
Cassyle Valley Simmentals
Frosty Springs Farm
Scherich's Simmental Farm
W&E Farm

Huntingdon County

E&R Farms LP
McClure Mills Farms

Indiana County

Woodview Simmental Farm

Juniata County

Serenity Hills Farm
Sorrell Acres Farm

Lebanon County

CLO Simmentals
HEB Farms
JEH Simmentals
White House Farm

Luzerne County

White House Farm

Lycoming County

Puderbaugh Farms

Mercer County

Downs, David & Annette

Mifflin County

Green Ridge Simmental
KNT Beef Farm

Monroe County

JMP Farms

Northampton County

Poliskiewicz Stock Farm

Perry County

FWB Simmentals

Schuylkill County

Schadel, Neal & Darlane

Snyder County

Ste-Wan Farms

Tioga County

Druck, Philip
Dan=D=Don Farm
On The Edge Farm

Washington County

Justin Mankey
SVJ Farm

Wayne County

Burleigh Cattle Co

Westmoreland County

Mills Rolling Acres

York County

NikLen Valley Farm

Other states...

Maine

Pine Creek Show Cattle

Maryland

Anvil Acres
Folly Farm
Highfields Farm
Pond View Farm

Massachusetts

Hillcrest Farm

New Jersey

Double RD Farm
Bishop Simmental
Paulus Farms

New York

Back Road Ranch
Elm Side Farm
Ladybug Farm
MCS CMS Livestock
Porter's Simmental Lake Ranch
Premier Farm

Rugenstein Family Farm
Simme Valley Ranch
Sunrise Farms

Ohio

Charmont Farms

Crum's Circle C
M & B Acres
Mast Simmental

West Virginia

Buena Vista Simmentals
Classic Farms
Cold Spring Farm

**RULES AND BY-LAWS
PENNSYLVANIA SIMMENTAL ASSOCIATION, INC.
ARTICLE 1 — NAME**

1. The name of this corporation shall be the Pennsylvania Simmental Association, Inc.

ARTICLE II — AIMS AND OBJECTIVES

1. The Pennsylvania Simmental Association has as its primary objective the development and promotion of the Simmental breed of cattle in the State of Pennsylvania. It is believed that the Simmental Breed can make an important contribution to the improvement of the cattle industry in Pennsylvania.

ARTICLE III — MEMBERSHIP

1. Application for membership must be made in writing to the Secretary-Treasurer of the Association.
2. The Board of Directors shall have the power to accept or reject any applications for membership. The Board of Directors shall have the power to suspend or expel any member who conducts himself in a manner detrimental to the Association or fails to comply with the rules and regulations without refund of membership fees or dues.
3. A member whose membership has been revoked must make a written application of reinstatement and can be reinstated only after having received three-fourths (3/4) affirmative vote from the Board of Directors.
4. Legal Partnerships or Incorporated Companies shall specify in writing the person authorized to vote or act in their behalf at any meeting of the Association.
5. Members may vote by proxy at the Annual Meeting if the delegate has in his possession the proxy of the undersigned membership, executed and sworn before a Notary Public.
6. Active Members shall be owners or breeders of cattle who pay the membership fee, and who are in good standing.
7. Associate Members are non-voting members who may be interested in advancement of the Association. Associate Members may not vote or hold elective offices.
8. (Amended January 14, 2006) Junior Members shall be those under 22 years of age who have paid the prescribed fee. Junior Members are not entitled to vote or to hold elective office except as herein after provided.
9. Honorary Members are individuals who have made an outstanding contribution to the development of the Simmental Breed in the State of Pennsylvania. They are elected by the general membership of the Association provided they have been recommended for such appointment by a prior resolution of the Board of Directors. Honorary memberships are not entitled to vote and may not hold elective offices.
10. Annual Dues: \$40.00 for Senior Members, \$10.00 for Junior Members.

ARTICLE IV — OFFICERS AND DIRECTORS

1. Duties of Officers

- a. The President shall be the Chief Executive Officer of the Association. He shall preside at its meetings. He shall carry on the business of the Association under the Articles of Incorporation, the by-laws, and the instructions of the Board of Directors.
- b. The Vice President, in the absence of the President, or at his request, shall perform the duties of said officer.
- c. The Secretary-Treasurer may be a member of the Board of Directors, or he may be appointed or hired by the Directors. He shall manage and administer the business affairs of the Association in accordance with the policy and directives from the Board of Directors as communicated to him by the President. He shall be the official custodian of the seal and the records of the Association. He shall see to the financial affairs of the Association.

2. Duties of the Directors

- a. (Revised March 28, 1986) The affairs of the Association shall be managed by a Board of Directors. Adult Directors shall be elected by written ballot at the Annual Meet-

ing of the Association. The Board of Directors shall consist of ten (10) Adult members and one (1) Junior member. Each adult Director shall be limited to two (2) three (3) year consecutive terms. He shall again be eligible for re-election after one (1) year's absence. The Junior Director shall be elected by written ballot at the Annual Meeting of the Pennsylvania Junior Simmental Association and shall serve a one (1) year term of office and shall be limited to two (2) consecutive terms. He shall again be eligible for re-election after one (1) year's absence.

b. The Directors shall elect from among the active members of the Pennsylvania Simmental Association a President and Vice President whose terms of office shall be one (1) year or until the next annual meeting. The Board of Directors may appoint additional officers as they see fit in order to carry out efficiently the affairs of the Association. However, only active paid up members in good standing may be officers.

c. The Board of Directors shall have the authority to appoint anyone that they see fit to the Board of Directors, to serve a one (1) year term.

d. Each person who shall serve as a Director or Officer of the Association shall be indemnified by the Association against all costs and expenses incurred by or imposed upon him, in connection with or resulting from any action, suit or proceeding to which he is, or may be made a party, by reason of his being or having been a Director or Officer of the Association. Such indemnifications shall include settlements made in amounts approved by the Board of Directors at the time such settlement is effected, whether or not such person is a Director or Officer at the time such costs are incurred by or imposed upon him. Except, the indemnifications shall not apply where he shall be finally adjudged to be liable by reason of having been negligent, guilty of misconduct or otherwise derelict in the performance of his duty as an Officer or Director. The rights of indemnification herein provided shall not be exclusive of other rights to which such person may be entitled as a matter of law.

ARTICLE V — MEETINGS

1. Membership Meetings

a. An Annual Membership Meeting shall be held once in every calendar year with a maximum time of fifteen (15) months between meetings. The time and place shall be designated by the Board of Directors. All members will be notified by letter or in the official organ of the Association at least thirty (30) days prior to such meeting. The order of business shall be mentioned in the notice of the meeting.

b. A quorum for Annual Membership Meeting shall consist of the Active Members in good standing present.

c. Only Active Members who are in good standing and those whose membership is paid are entitled to vote at any Annual Membership Meeting.

d. Standard parliamentary procedure will be followed at all meetings of the Association membership and at all meetings of the Board of Directors.

e. Special membership meetings may be held at the discretion of the Board of Directors. All members will be notified by letter at least ten (10) days prior to the meeting date. Special business shall be mentioned in the notice and no other business shall be transacted.

2. Board of Directors Meeting

a. The regular meeting of the Board of Directors shall be held each year in conjunction with and at the same place as the Annual Membership Meeting.

b. In addition to the meeting provided for in paragraph "a" above, the Directors shall meet annually at a time and place to be selected by the Board of Directors. This meeting shall occur approximately six (6) months prior to the next Annual Membership Meeting.

c. Special Meetings of the Board of Directors may be held on call of the President by giving ten (10) days notice in writing of time, place and purpose.

d. Five (5) Directors shall constitute a quorum at any Directors Meeting.

ARTICLE VI — COMMITTEES

1. **Rules Committee**

It shall be the duty of this Committee to interpret all rules and regulations, and to recommend such changes as they deem necessary to the Board of Directors for their approval.

2. **Financial Committee**

The Secretary-Treasurer shall be the Chairman of the two (2) Directors. Their purpose shall be to prepare a budget and submit it to the Board of Directors for their approval. They shall also make recommendations to the Board of Directors for the investment of available funds.

3. **Exhibition Committee**

This Committee shall make recommendations pertaining to live animal and carcass display.

4. **Membership Committee**

Shall promote and encourage membership in the Association.

5. **Sales Committee**

Shall set rules which uphold the performance and quality of the Simmental cattle in state sanctioned sales.

6. **Promotion Committee**

Shall make recommendations concerning the advertising and promotion of Simmental cattle to insure the proper image at sales.

ARTICLE VII — BY-LAW AMENDMENTS

1. The Board of Directors shall have the power to amend the By-Laws of this organization by a three-fourths (3/4) majority vote.
2. Any change or revision of the By-Laws as a result of Board action shall become effective within thirty (30) days after which such change is published and every member is notified.
3. Any amendments made by the Board of Directors may be suspended if the Secretary-Treasurer received a petition signed by ten percent (10%) of the membership within sixty (60) days from the date of notification of the change or revisions.
4. Any such action of the Board of Directors may be subject to the approval of the membership at the next Annual Membership Meeting.

ARTICLE VIII — RESTRICTIONS AND TERMINATION

1. No part of the net earnings of the Association shall inure to the benefit of, or be distributable to its Directors, officers or other private persons, except that the Association shall be authorized and empowered to pay reasonable compensation for services rendered, and to make payments and distributions in furtherance of the Aims and Objectives set forth in Article II hereof. The Association shall neither participate nor intervene in (including the publication or distribution of statements) any political campaign on behalf of or in opposition to any candidate for public office, nor shall it take a position on any issue raised in a political campaign for the purpose of aiding or opposing any candidate. Any other provision of these Bylaws to the contrary notwithstanding, the Association shall not carry on any activities not permitted to be carried on by a corporation exempt from Federal Income Tax under Section 501(a) and Section 501(c)(5) of the Internal Revenue Code of 1986, as amended, or the corresponding provisions of any subsequent tax laws of the United States (the "Code"). These Bylaws shall not be altered or amended in derogation of the provisions of this Section of this Article.
2. Upon the dissolution of the Association, its assets shall be distributed to a nonprofit association that promotes the breeding of Simmental Cattle for one or more exempt purposes, within the meaning of Section 501(c) (5) of the Code. Any such assets not so disposed of shall be disposed of by a court of competent jurisdiction of the county in which the principal office of the Association is then located, exclusively for such purposes. Upon the sale of substantially all of the assets or the dissolution of the Association, surplus shall not be utilized for the private interest of any person.

SSC Victoria's Secret 49B



Remington Secret Weapon x Lazy H Shez Too Cool W58

**High Selling Female at the
2016 Gettysburg Stars and Stripes Sale**

► *Embryos Available*

► *Progeny Available*



**SSC Secret
Society 22D**

*Daughter
of Victoria's
Secret 49B*

**Reserve Grand Champion Female
at the 2017 PA Farm Show Jr. Show**

Mast Simmentals - Andy Mast Family

519 Main Street, Pleasant City, OH 43772

Shop: (740) 685-1199

Cell: (740) 260-6620

Pennsylvania Junior Members

Arndt, Cheyenne
441 Hillside Dr
Middleburg, PA 17842

Brenize, Hannah
6867 Upper Strasburg Rd
Pleasant Hall, PA 17246

Dobbin, Ashley
504 Ridge Rd
Halifax, PA 17032

Dobbin, Kelsey
504 Ridge Rd
Halifax, PA 17032

Dobbin, Madison
504 Ridge Rd
Halifax, PA 17032

Downs, Sara
194 Stock Farm Rd
Jackson Center, PA 16133

Gardner, Lane
3011 Middle Creek Rd
Beaver Springs, PA 17812

Haley, Isabella
5163 Glen Brook Rd
Strousburg, PA 18360

Heald, Abby
1615 Fox Gap Rd
Bangor, PA 18013

Henry, Laura
275 Kocher Rd
Elizabeth, PA 17023

Metzker, Keller
5334 Clover Creek
Williamsburg, PA 16693

Puderbaugh, Chloe
426 Talmar Rd
P.O.Box 43
Unityville, PA 17774

Puderbaugh, Jacob
426 Talmar Rd
P.O.Box 43
Unityville, PA 17774

Stewart, Grady
2016 Armstrong Valley Rd
Halifax, PA 17032

Workman, Lane
1348 Harney Rd
Littlestown, PA 17340

Workman, Luke
1348 Harney Rd
Littlestown, PA 17340

Pennsylvania Junior Simmental Association

For full membership listing, please visit our website www.pasimmental.com!

PJSA Advisors

Rhonda Arndt

441 Hillside Drive
Middleburg, PA 17842
(570) 847-9844
farmchic3@hotmail.com

Officers and Royalty

President

Sara Downs

194 Stock Farm Road
Jackson Ctr, PA 49466
(724) 376-7195

Vice President

Ashley Dobbin

504 Ridge Rd
Halifax, PA 17032

PSA Queen

Kelsey Dobbin

504 Ridge Rd
Halifax, PA 17032

Secretary

Laura Henry

275 Kocher Rd
Elizabeth, PA 17023

Treasurer

Kelsey Dobbin

504 Ridge Rd
Halifax, PA 17032

PSA Princess

Cheyenne Arndt

441 Hillside Dr
Middleburg, PA 17842

Pennsylvania Junior Simmental Association

Application for Membership

www.pasimmental.com

Member Name: _____ Birth Date: _____

Farm Name: _____

Address: _____

City: _____ State: _____ Zip: _____

Telephone Number: (_____) _____ County: _____

E-mail: _____ Web Site: _____

\$10.00 Junior Membership _____

Signature _____ Date: _____

Send to:

Rhonda Arndt

441 Hillside Drive • Middleburg, PA 17842

Phone: (570) 847-9844 • E-mail: farmchic3@hotmail.com

Pennsylvania Simmental Association

2019 Members of the Year



Junior Member

Ashley Dobbin

*From left: Ashley Dobbin, PSA
President, Ron Dziembowski*



Senior Member

Steve Hook

*From left: Steve Hook, PSA
President, Ron Dziembowski*



Breeder of the Year

SVJ Farm

Dwane and Valerie Snee



Family of the Year

Dobbin Family

*From left: Dobbin Family, PSA
President, Ron Dziembowski*

STARS & STRIPES



MAY 2, 2020

WAGNER SALE FACILITY HERSHEY, PA

Join us on the 2nd at our NEW location!



Doug & Debbie Parke • 859.421.6100
Drew & Holli Hatmaker • 423.506.8844
859.987.5758 • office@dpsalesllc.com
www.dpsalesllc.com

For Sale:

• Heifers

• Bulls

• Steers

• Donkeys

• Sim x Red

Angus

Frosty Springs Farm



**James and Billie Cowell
1214 Garards Fort Road,
Waynesburg, PA 15370**

Email: frostyspringsfarm@hotmail.com

Follow us on Facebook: Frosty Springs Farm

House Phone: 724-627-8271

Jim Cell: 724-986-8502

Billie Cell: 724-998-4355

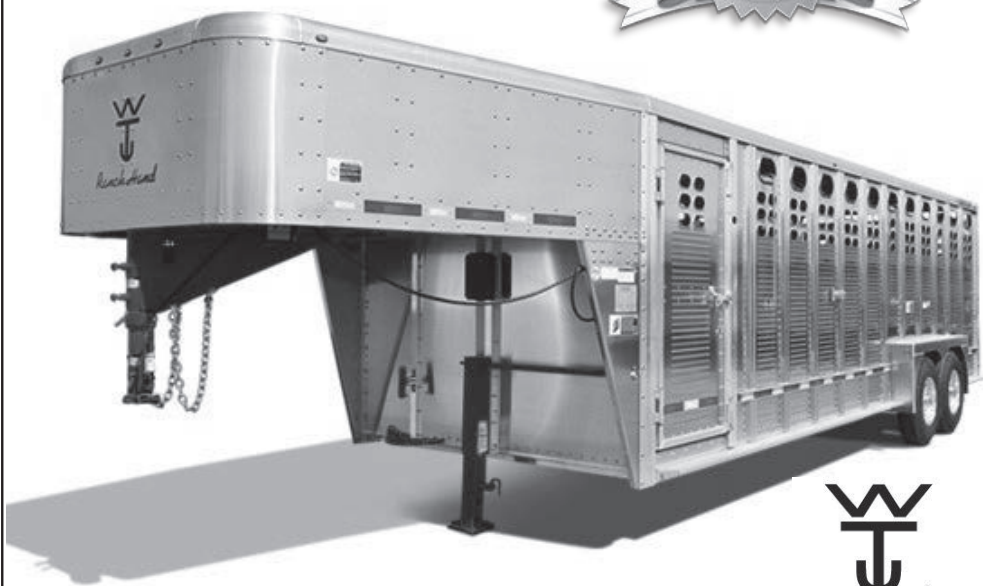
**CAM Cattle Co.: Chris and Alissa Mytar
Livestock available for viewing at FSF**

EMM

SALES & SERVICE, INC.

P.O. Box 255
141 Zooks Mill Rd
Brownstown, PA 17508

800-288-2081



**W
J**
Ranch Hand



Wilson **TRAILER
COMPANY**

www.EMMSales.com

CONSIDER THE BAR RAISED.



Vermeer mower conditioners combine exceptional performance, flexibility and convenience, and give operators control in even the toughest mowing conditions. The Q3™ Cutter Bar provides optimum performance with reduced horsepower requirements and is backed by a Vermeer 3-year cutter bar warranty. The Quick-Clip® Blade Retention System and Quick-Change™ Shear Ring simplify changing blades and repairing sheared discs. As far as mower conditioners go – the MC2800, MC3300 and MC3700 are a cut above the rest.

DECIDEDLY DIFFERENT.



VR Series wheel rakes from Vermeer deliver the extra strength, widestance balance and reliability needed to handle a heavy diet of haying – starting with the first cut. Handle different crops and conditions and reset windrow widths with the drop of a pin. Plus, you can turn hay in the center of the swath with optional center splitter wheels. It's a wheel rake that's decidedly different.



Vermeer®
WILKINS AND SON EQUIPMENT

1708 Pinchot Road, Saxton, PA 16678
Office: 814-635-3392 Cell: 814-502-0968
Email: wilkinsequip@yahoo.com
Fax: 814-635-2993

Rugenstein Family Farm

Randy and Karen Rugenstein
Becky, Tom and Addison Snyder
Amy, Mike, Grant and Laramie Pyra

Canandaigua, NY
585-615-8776
rffarm@hotmail.com



Raising proven Simmental genetics that perform both in the pasture and in the show ring.



Aluminum Livestock Trailers ~ Show Feeds
Clipper Sales, Repairs and Sharpening
Border Collies

Weaver Grooming Supplies

Reg. Sim/Angus

www.freysupply.com

Fritz and Nancy Frey

1664 Furniss Rd
Drumore PA 17518

ph 717-548-1351

fax 717-548-0376

ffrey@freysupply.com

Forever Running Farms

Reg. Simmental

For Sale: Bulls, Heifers, and Steers

Annies Gunslinger Pistol

Grandmaster's Annie x SS/PRS Gunslinger 824X

2016 Grand
Champion Bred
and owned, PA
State Farm
show

Grand
Champion
Division 2017
Junior and
open show, PA
State Farm
show



Mochas Loaded Girl

Mocha x Lazy H Lock and Load A14



2016 Supreme
Champion,
Ashtabula
County Fair

Reserve
Champion
Division 2017
open show, PA
State Farm
show

Hazel Baron

Art Baron

Donald Baron

Email: h18469@verizon.net

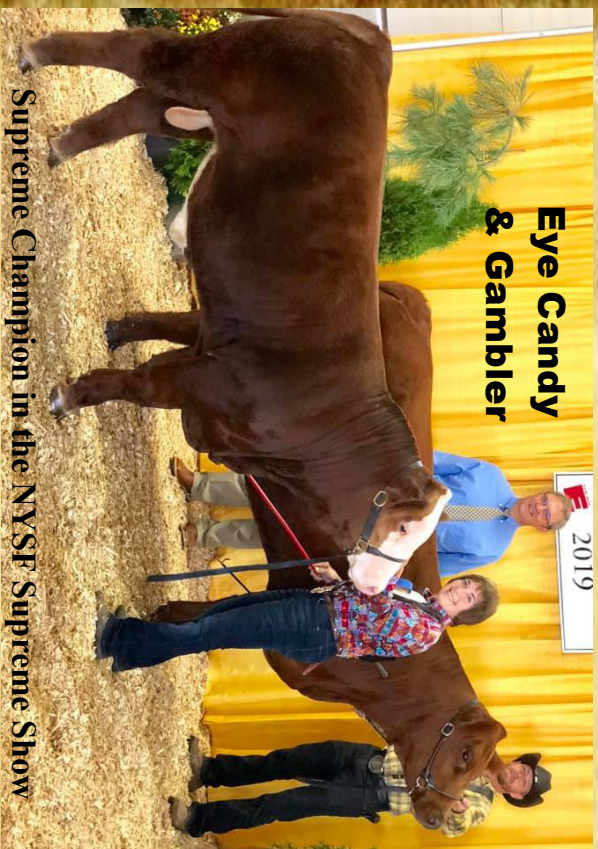
Email: dobaron4040@gmail.com

Telephone: (814) 398-8211

18469 Price Rd • Saegertown Pa, 16433



Jeanne White, Owner
Phil Paradis, Manager
 Groton, NY
607-423-4888 cell
Jeanne@SimmeValley.com
www.SimmeValley.com



**Eye Candy
& Gambler**

Supreme Champion in the NYSF Supreme Show
Simme Valley Gambler – 1-1-19 - Kappes Pendleton
Bull Sold to Ortensi Farm



**Simme Valley
Eye Candy**

2-24-17 Mack AF x HPF Desa Rae 811U

Producing Stylish Predictable

Simmental Cattle
that perform in and
out of the show ring



Show cattle & breeding stock for sale at all times. Bull calves & show steers available through the summer. We strive for Satisfied Customers.
 Our cattle work for us and their new owners, performing on grass in the summer and hay in the winter.
 **** Watch for our consignments to the Stars & Stripes Sale on the 1st Sat in May ** Selling full sib to Eye Candy with a Pendleton Heifer calf. ****

Mountain View Simmentals

Purebred Simmental Beef Cattle



***Visitors are
always welcome.***

***Open and Bred
Females in
Annual Stars
and Stripes Sale.***



Tom and Barbara Vossler

665 Knoxlyn Road
Gettysburg, PA 17325

Email: tvossler@comcast.net

Home: 717-337-1615

Cell: 717-752-6823

**Long yearling and yearling bulls for sale off the farm –
AI bred and MVS Maximus' sons.
Call Tom at 717-337-1615 to see these great bulls.**

SHOEMAKER'S SIMMENTALS

2006 PA Farm Show Premier Breeder and Exhibitor



Shoemaker's Real Deal

2006 PA Farm Show Grand Champion Bull

Shoemaker's Miss Marker

STF Mr Momentum H508

Herd Sire - Shoemaker's Commander



Commander Offspring Offer Excellence in the Show Ring



Shoemaker's Lady Precept

2006 PA Farm Show
Grand Champion Simmental Heifer



Shoemaker's Salome

2006 PA Farm Show - Junior Show
Reserve Champion Simmental Heifer

Commander Offspring Also Offer Superior Performance

2003-2004 Pennsylvania Bull Test
2nd Highest Indexing Bull
3 of The Top 6 Highest Indexing Bulls

2005-2006 Pennsylvania Bull Test
2nd Highest Indexing Bull
3 of The Top 5 Highest Indexing Bulls

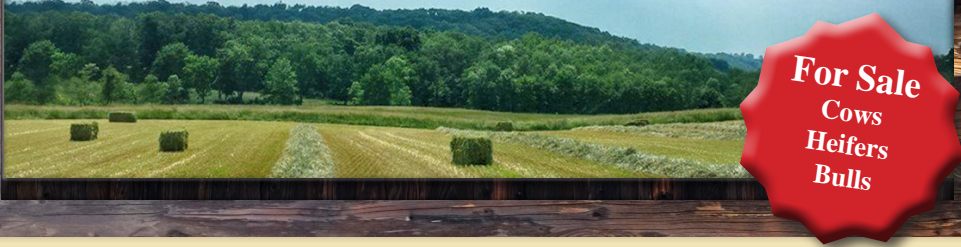
William Shoemaker

3839 Milligans Cove Road • Manns Choice, PA 15550

Telephone: (814) 624-0667 Cell: (412) 721-8814

Email: shoesim@yahoo.com

CURRY WAGNER SIMMENTALS



For Sale
Cows
Heifers
Bulls

www.CURRYWAGNERFARMS.com

Visitors always welcome!



CWSF CHEVELLE C34
ASA# 3087144



CWSF Courtney C15
ASA# 3087129

New host for the annual Stars & Stripes Sale
The first Saturday in May

Curry Wagner, Sr.
717-991-0387

Curry Wagner, Jr.
717-943-2262

1423 Sandbeach Road
Hummelstown, PA 17036

