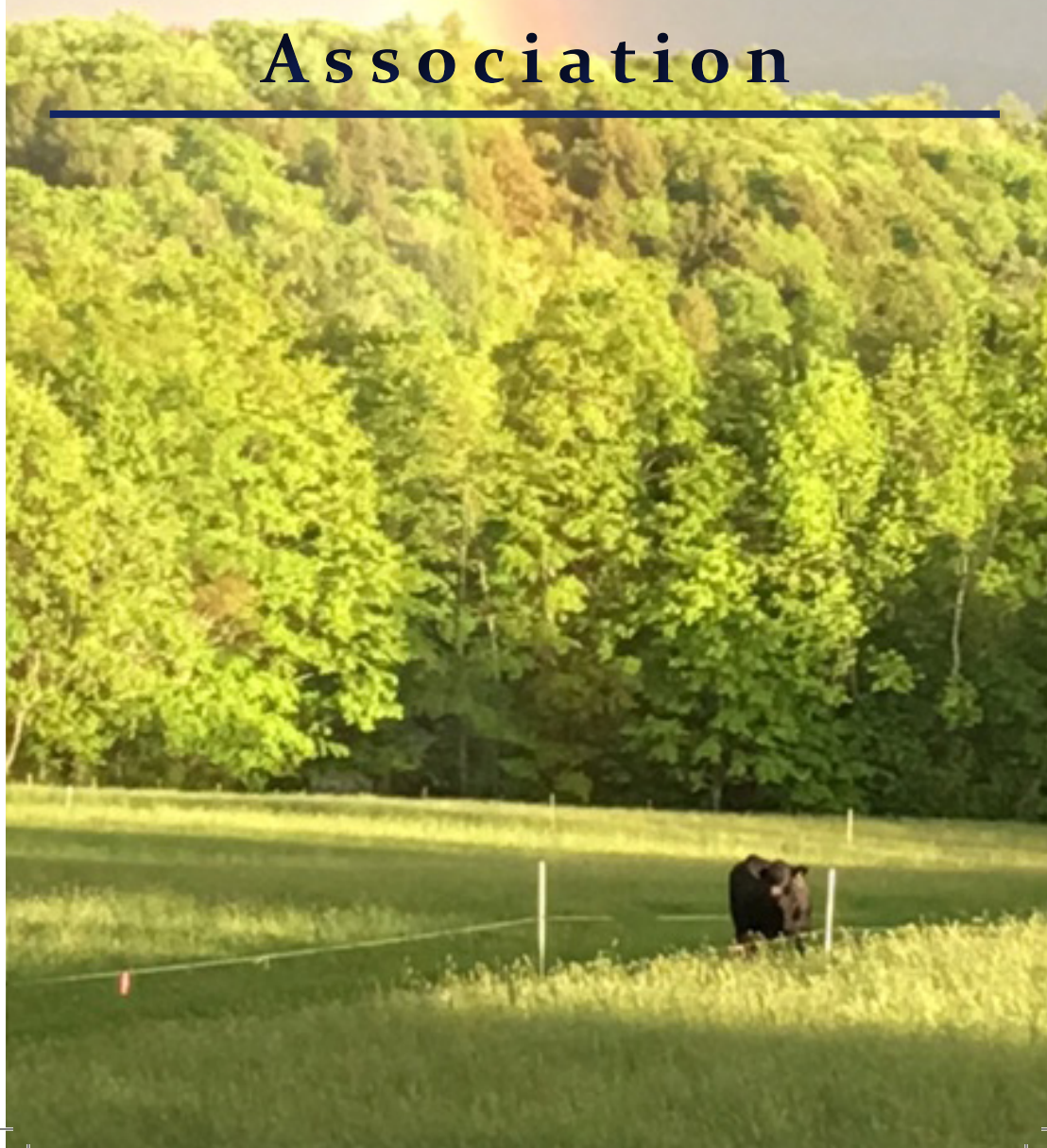


2019 Membership Directory

Pennsylvania Simmental Association

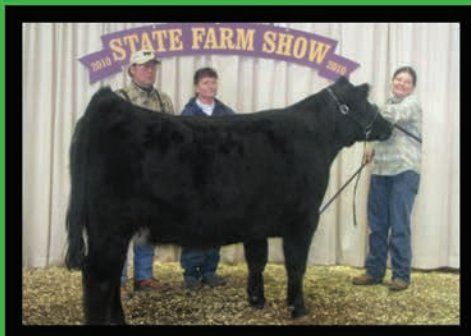


STE-WAN FARMS

Breeding today for tomorrow's success

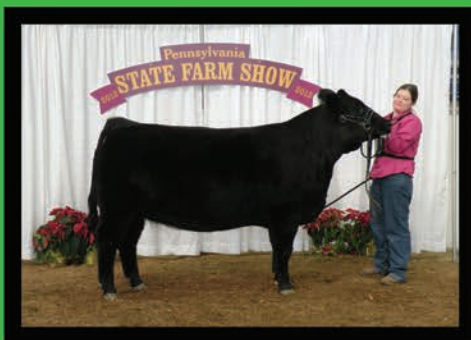


WINSLOW'S JAIL BREAK



MF SWEET DREAMS

**We breed with top A-I bulls
Broker, Lock N Load, Revival,
One Eyed Jack, Pays to Believe**



MF MISS HURRICANE



CVFC LADY UPGRADE

**Steve & Wanda Hook
Mike, Rhonda, Cheyenne Arndt**

4751 New Berlin Hwy.
Middleburg, Pa. 17842

570-837-7020
stewanfarms@verizon.net



LOLA

LOCK N LOAD X STF NOSTALGIA

A direct daughter of the famed STF Nostalgia, our young red donor needs no introduction. Winnings include 2017 Eastern Regional Division winner, 2 time division winner KILE, 2016 Champion Simmental Empire State Classic, 2016 Ohio AGR Champion Simmental Ring A and B, Supreme Champion Female 2017 Huntington Cattle Battle, Champion Simmental Bedford Spring Fling, and the list goes on and on. Many genetic opportunities are becoming available that will bring your program to the back drop.

JF MILESTONE X WHF SIERRA

KATE



Recently acquired from Hudson Pine's dispersal, **WHF/PRS/HPF KATE 246Y**, full sister to WHF/PRS/HPF Alley, the past Denver Champion who commanded \$87500 at the Hudson Pine dispersal. This young cow's possibilities are endless! Owned with Prospect Cattle Company.



ALLEY

FULL CIRCLE FARMS

JOSH & STEFF WINSLOW 724.541.0339

TOM HUFF 724.541.7465 *Dayton, Pennsylvania*



Green Ridge

Contact us for information

Joe Lapp • Phone: 717-363-6628



SSC PEBBLES 330Z

SVF/NJC Built Right N48 x HPF Perfection W568



SSC MISS SECRET 45B

Remington Secret Weapon 185 x Lazy H Shez Too Cool W58

Simmentals

about genetics from our donors!

120 Slate Ln, McVeytown, PA 17051



STF/HRLR DIAMOND EX81

LLSF Uprising Z925 x STF Onyx 451W



FSCI MS EXCITEMENT E097

W/C Loaded Up 1119Y x CAJS Sweet Emotion 42Z

Table of Contents

Table of Contents	4
Index to Advertisers	4
President's Message	6
PSA Officers and Directors	9
Upcoming Events.....	15
Simmental History	10-11
PSA Membership Awards.....	46
PSA Membership Listing–By Last Name	13-43
PSA Application for Membership	31
PSA Membership Listing–Cross-Referenced by Farm Name	44-45
Frame Score Chart.....	47
Gestation Table.....	48
Map and Index of Member Farm Locations	52-53
Rules and By–Laws.....	54-56
PJSA Officers/Members.....	58-61
PJSA Application for Membership.....	59
PJSA Advisors	59

Index to Advertisers

ABS.....	51	Keystone Cattle Service.....	15
American Simmental Association..	11	Ladybug Farm.....	8
Charmont Farm.....	32	Mast Simmental.....	57
Cowbuyer.....	49	Mountain View Simmental..	Back Cover
Curry Wagner Simmentals	68	On The Edge Farm.....	33
Double RD Farm.....	17	Porter's Lake Simmental Ranch ..	19
E&R Farms	17	Powell's Valley Simmentals.....	12
Eastern States Livestock Systems	39	Rugenstein Family Farm.....	64
Eby	50	SASA Farms.....	66
Elk County Simmentals	41	Select Sires.....	25
Elm Side Farm	23	Shoemaker's Simmentals..	Ins. Back
EMM Sales & Service	63	Simme Valley Ranch.....	67
Forever Running Farm.....	37	Ste-Wan Farms	Inside Front Cover
Frey Livestock Supply	65	Stewart's Simmental Cattle.....	34-35
Frosty Springs Farm.....	62	SVJ Farm	7
Full Circle Farm	1	Trans Ova.....	5
Gallagher Printing	21	Wilkins and Son Equipment	64
Genetic Visions	29	Woodview Simmental Farm.....	17
Gettysburg Stars & Stripes	36	Zimmerman's Custom Freezing..	41
Green Ridge Simmetals.....	2-3		

Our special thanks to these advertisers for making this directory possible.

Please visit the PSA website, www.pasimmental.com

WE BRING GOOD THINGS TO **LIFE.**



EMBRYO TRANSFER • IN VITRO FERTILIZATION • SEXED SEMEN • RECIPIENT OPTIONS FRESH SHIP PROGRAM • CLONING & GENETIC PRESERVATION • WEANED CALF PROGRAMS

We are excited to offer our services through two new Pennsylvania locations! Check our website for satellite location information.

Klinedell Farms
Myerstown, PA

Heart & Soul Holsteins
Millmont, PA

Maryland Regional Center • 866-774-3162

TRANS  **OVA**
genetics

WWW.TRANSOVA.COM
MULTIPLY SUCCESS®

A Message from the President of the Pennsylvania Simmental Association

As I sit here trying to decide what to write about, what message to send. Should I talk about the dreadful weather we've been having. Just finished plowing snow, the wet muddy year we've had, about to get hit with our second polar vortex, as though one wasn't enough of a test.

Instead my thoughts keep drifting to Spring being only a couple of weeks away, we start calving next week and the anticipation of new babies running in the pasture. Starting plants in the greenhouse tomorrow. The Spring Into Excellence sale in a few weeks and getting to see other like minded cattle people, not as potential customers but as friends who we have come to know from our time with Simmental cattle. Demand for Simmental cattle remains strong as does our association and members.

While the past at times has been trying, the positive impact Simmental cattle and more importantly the friendships and relationships that have been made make each day pretty darn good.

Sincerely,

Ron Dziembowski



BREEDING *Champions...*

SIMMENTAL & SIMANGUS GENETICS



SVJ MISS STYLE D237

Selected as one of the top bred heifers from our fall online sale went on to be Champion Female at the PA Farm Show 2018. Owned by Nick Barney.



HPF DAISY MAE E063

TKCC Classified X HPF Daisy Mae A354, dammed by our premier young donor, big things coming from this cow family. Owned with Circle T Farm



SVJ SHE'S THE DREAM Y728

*Wild Fires Dream X She's The One
Dam of many of our champions*



CNS QUEEN ME S613

*Still producing our top show heifers each year,
many fresh matings on the way*

**Annual Online Female Sale | Mid-October
Hosted by DP Online Sales**

Duane and Valerie Snee
465 Ringland Ridge Road
Amity, PA 15311

724-554-0446 (Valerie)
724-263-1725 (Duane)
valeriemoney@earthlink.net

Call us today to discuss SVJ genetics!

SVJ Farm

www.svjfarm.com



Future is Bright at LBF



LADYBUG FARM

Home of LBF SIMMENTALS

Black, Red & Traditional
Purebred Performance Cattle
With Show Appeal
AI Sired Since 1980



Quality Show Heifers and Breeding Stock for Sale

Watch for Our Consignments in the NY & Pa. Bull Test Sales and
Gettysburg Stars & Stripes Sale



Ken & Mary Gumaer
716-735-7904
716-830-8149 cell



9335 Pearson Road
Middleport, NY 14105
marygumaer@aol.com

Pennsylvania Simmental Association

Officers

Ron Dziembowski, President

400 River Road
Hillsborough, NJ 08844
Telephone: (908) 448-7203
E-mail: RLUVSANGUS@aol.com

Dan Workman, Vice President

1348 Harney Road
Littlestown, PA 17340
(717) 451-2188
truckin68ds@yahoo.com

Rhonda Dziembowski, Secretary Nichole Graham, Co-Secretary

400 River Road
Hillsborough, NJ 08844
Telephone: (774) 289-4564
E-mail: RLUVSANGUS@aol.com

Ron Dziembowski, Treasurer

400 River Road
Hillsborough, NJ 08844
Telephone: (908) 448-7203
E-mail: RLUVSANGUS@aol.com

Directors

Art Baron

18469 Price Road
Saegerstown, PA 16433
(814) 398 8211
h18469@verizon.net

Jeremy Dobbin

504 Ridge Road
Halifax, PA 17032
(717) 896-872
dobbin123@comcast.net

David Downs

194 Stock Farm Road
Jackson Center, PA 16133
(724) 376-7195
ddowns2011@hotmail.com

Steve Hook

4751 New Berlin Hwy.
Middleburg, PA 17842
(570) 837-7020
stewanfarms@verizon.net

Nichole Graham

13820 Wolf Road
Felton, PA 17322
(717) 968-6635
nikkig7391@gmail.com

Cliff Orley

1486 Mt. Wilson Rd
Lebanon, PA 17042
(717) 269-0128
corley01@comcast.net

Elena Poliskiewicz

2364 N Delaware Dr.
Mt. Bethel, PA 18343
(570) 872-4470
Poliskiewiczstockfarm@yahoo.com

Joshua Pysher

5163 Glanbrook Rd
Stroudsburg, PA 18360
(570) 856-3249
jmp369psu@hotmail.com

Curry Wagner

1423 Sand Beach Road
Hummelstown, PA 17036
(717) 991-0387
cwsfarms58@gmail.com

Dan Workman

1348 Harney Road
Littlestown, PA 17340
(717) 451-2188
truckin68ds@yahoo.com

Term Expiring 2019

David Downs
Jeremy Dobbin
Nichole Graham

Term Expiring 2020

Art Baron
Steve Hook
Curry Wagner
Dan Workman

Term Expiring 2021

Cliff Orley
Elena Poliskiewicz
Joshua Pysher

Simmental ...

Today's Simmental on Cutting Edge

From the American Simmental Association

Bozeman, Montana

In 1968, a group of maverick cattlemen met to form the American Simmental Association. They weren't mavericks because they wanted to produce Simmental genetics, they were different because they decided to use performance records and other technologies as everyday tools for cattle and beef improvement.

As a result of their focus on performance, the first beef breed sire summary was published in 1971. This initial summary contained information on a grand total of 11 Simmental bulls! Today, millions of records are analyzed for each Simmental Sire Summary and almost 100,000 sires have records in the database.

European Simmental breeders had incorporated performance traits unique to most world cattle genetics. Few breeds could offer the combination of early puberty, growth rate, muscularity, milk production and gentle disposition found in the Simmental imports of the 1970s. When combined with America's existing Brahman and British-influenced commercial cows, farmers and ranchers had finally discovered a crossbreeding combination that optimized feeder cattle production, and offered the opportunity for great crossbred replacement heifers.

Simmental were so popular by the early 1980s, many commercial herds had become high percentage Simmental. These cattle had similar characteristics to European Simmental and thrived in high nutrition environments; however, in several areas of the U.S., it was becoming apparent that Simmental genetics needed more calving ease, less frame size and more carcass quality.

The members of the American Simmental Association responded to the call for improving these traits. Since 1984, ASA's database genetic trend proves today's Simmental sires offer greatly improved calving ease. There are numerous bulls listed in the ASA Sire Summary with high accuracy progeny proofs for exceptional direct and maternal calving ease. Now, by selecting for high calving ease EPDs, many commercial herds can safely use Simmental bulls on their heifers and cows.

Using a planned crossbreeding system, Simmental cross females are valuable replacements. Besides being among the easiest calving heifers in the business, Simmental frame scores have been dramatically decreased. The most popular Simmental bulls in the U.S. averaged frame score 6.4 in 2002 compared to a 9 in 1986. In addition, these current bulls are all solid colored and polled.

Simmental ...

Today's Simmental on Cutting Edge (continued)

From the American Simmental Association

Bozeman, Montana

The biggest change in beef production in the 1990s was the intense emphasis on carcass value. Branded beef programs featured products with much better value consistency. Both leanness and meat quality are and will continue to be critical factors of carcass value. The American Simmental Association is the most aggressive continental breed association in performance testing sires for carcass value.

Every bull in the ASA 2005 Sire Summary has carcass EPDs. Each year the ASA tests over 100 young sires for carcass value. In 1999, more than 2,000 carcasses from this program produced these averages: carcass wt. 782, fat thickness 0.41, REA 13.0, USDA Choice 69%, and less than 1% USDA Standard, dark cutters or heavy weight discounts. The ASA also lists the only Tenderness EPDs in the beef industry for most of the popular sires.

The breeders of the American and Pennsylvania Simmental Associations have taken a great breed and made it better. Where else can you find early puberty, great growth, continental breed muscle and easy dispositions tied to a database that identifies calving ease, moderated frame and the best marbling genetics among high growth cattle? Visit our website www.simmental.org or write for a free sire summary:

AMERICAN Simmental ASSOCIATION

**One Genetic Way
Bozeman, MT 59715**

Telephone: (406) 587-4531

Fax: (406) 587-9301

E-mail: simmental@simmgene.com

Website: www.simmental.org

POWELL'S VALLEY SIMMENTALS

*We produce gentle, functional cattle that perform as well
in the pasture as they do in the show ring.*

LAURIE MEYERS

470 MILLION DOLLAR ROAD, HALIFAX, PA 17032

PHONE: 717-350-2516 📍 EMAIL: LAURIE@PVSIMM.COM

**Stop in or call anytime -- we love to talk cattle.
Please visit our website, www.pvsimm.com!**



— ✕ — ✕ — ✕ —
Check with us for genetics
from our lead donor
CLCC Victoria W02 "Brightie."
— ✕ — ✕ — ✕ —

PVSM Broadway Lights

Hook's Broadway 11B x PVSM Spider

*Ryan Lehman showed his final 4-H steer project at the 2019 PA
Farm Show. We wish Ryan the best as he joins the Army this summer.*



Pennsylvania Simmental Association

Membership Listing

Arndt, Michael and Rhonda Cell: (570) 847-9844

Ste-Wan Farms

441 Hillside Drive, Middleburg, PA 17842

Snyder County

E-mail: farmchic3@hotmail.com

Baron, Art & Hazel

(814) 398-8211

Forever Running Farm

18469 Price Rd

Cell: (814) 720-5575

Saegerstown, PA 16433

Crawford County

E-mail: h18469@verizon.net

Bayler, John and Rita

(717) 641-3151

Double "B" Venture

Cell: (717) 364-8029

132 Community Park Drive, Palmyra, PA 17078

Lebanon County

Benner, Fred, Kim, Ellie, and Emily

Fred: (717) 320-2303

Serenity Hills Farm

Kim: (717) 994-2540

429 Happy Hollow Road, Mifflintown, PA 17059

Juniata County

E-mail: fbenner@embarqmail.com

From US 322, PA 35 North at Mifflintown Exit, 1.5 miles.

Bertrand, Gary, Cindy, Stephanie, and John

(508) 832-8313

Hillcrest Farm

Cindy's Cell: (774) 272-1235

148 Millbury Street, Auburn, MA, 01501

Worcester County

E-mail: cindybertrand@charter.net

Bishop, Kevin W.

(856) 358-3923

KB Simmental

Cell: (856) 297-3813

29 Pine Tavern Road, Elmer, NJ 08318

Salem County

Email: kbishop5@aol.com

Bosley, Jim and Betty

(304) 530-6636

Buena Vista Simmentals

Cell: (304) 257-3093

P.O. Box 5, Old Fields, WV 26845

Hardy County

E-mail: bvsimmentals@hardynet.com

4 miles north of Moorefield on Rt. 220, turn left on to Fish Pond Road. Physical address is 296 Fish Pond Road.

Broughton, Jonah and Abbey (585) 356-0906

Sunrise Farms

2939 Glor Road, Attica, NY 14011

Wyoming County

E-mail: sunrisefarmsny@yahoo.com

Brown, Chris and Kellee, Mollee, Tyler, and Carter (304) 366-5353

Classic Farms

50 Endeavor Lane, Fairmont WV 26554

Marion County

E-mail: classicsim@aol.com

Located off I-79 exit 132 (5 miles).

Busby, Bart (740) 269-8601

M & B Acres

Cell: (330) 432-4597

601 Busby Drive, Bowerston, OH 44695

Harrison County

E-mail: buzz31@frontier.com

Bussard, Gary and Paulette (814) 257-8570

163 Pasture Road, Dayton, PA 16222

Armstrong County

Campbell, James and Jackie (724) 852-1622

Campbell Land & Cattle LLC

Cell: (724) 263-0955

928 W.W. Railroad Road, Sycamore, PA 15364

Greene County

E-mail: cscfarm@yahoo.com

Carlisle, Barbara (724) 312-2746

Carlisle Farm

22 Mavor Lane, Avella, PA 15312

Washington County

Casilio, Butch and Denise (814) 965-5079

Elk County Simmentals

Butch's Cell: (814) 335-4417

1316 Water Street Ext., Johnsonburg, PA 15845 Denise's Cell: (814) 335-2434

Elk County

Six miles north of Ridgway on Route 948, bear right. Go to bottom of hill. Take right turn before bridge on Water Street Extension. Go 1-1/2 miles. Farm on left.

Cowdrey, Bud and Lois (937) 373-3921

Cowdrey, Brian, Jenny, Justin, Katelyn

(937) 515-0290

Charmont Farm

5592 Hermann Rd

Ripley, OH 45167

Upcoming Events

Pennsylvania Beef Expo and Performance Bull Test & Sale

March 29, 2019

Spring into Excellence Sale
State College, PA

March 23 & 24, 2019

Junior Jackpot Show
Harrisburg, PA

AJSA Eastern Regional Classic

June 19-22, 2019

Lewisburg, WV

PSA Field Day

July 13, 2019

Wagner Simmental
Mount Union, PA

All cattlemen are invited to attend!

Please see our website,
pasimmental.com, for details.

AJSA National Classic

July 21-28, 2019

Louisville, KY

Held in with Breeders Sweepstakes

Ag Progress Days

August 13-15, 2019

Rock Springs, PA

Keystone International Livestock Exposition

September 27-October 7, 2019

Harrisburg, PA

Open Show, Junior Show,
Junior Steers

Delaware Livestock Exposition

October 12-13, 2019

Delaware State Fairgrounds
Harrington, DE

Pennsylvania Fall Classic Sale

Saturday, October 26, 2019

Simmental Sale
Waynesburg, PA

American Royal Stock Show

October 16-27, 2019

Kansas City, MO

North American International Livestock Exposition

November 5 -November 21, 2019

Louisville, KY

National Western Show and Sale

January 11-26, 2020

2020 The One Simmental Sale
ASA Annual Meeting
Denver, CO

2020 Pennsylvania State Farm Show

January 4-11, 2020

Harrisburg, PA



**KEYSTONE
CATTLE
SERVICE**

- Custom Fitting for Show & Sale
- Herd Consultation
- Semen Sales
- Sale Advisor & Consultation
- Private Treaty Sales

CLIFF & LYNN ORLEY

1486 Mt. Wilson Rd.

Lebanon, PA 17042

(717) 964-2243

(717) 964-1862 Fax

(717) 269-0128 Cell

corley01@comcast.net

www.keystonecattleservices.com

Cowell, Jim and Billie (724) 627-8271
Frosty Springs Farm Jim's Cell: (724) 986-8502
1214 Garards Fort Road, Waynesburg, PA 15370
Greene County Billie's Cell: (724) 998-4355
E-mail: frostyspringsfarm@hotmail.com
Facebook: Frosty Springs Farm
I-79 South, Kirby Exit, go left at stop sign 2 miles, at stop sign, turn left. Go another 2 miles.

Crum, Bob and Jenny Bob: (740) 213-7727
Crum's Circle C Jenny: (814) 571-3243
36951 CR 2E, Woodsfield, OH 43793
Monroe County
E-mail: crumscirclec@gmail.com
Website: crumscirclec.com
From I70, south on OH800 for 19 miles to Malaga (flashing light), right on OH145 for 3 miles to Miltonburg, take first right after town—County Rd 2E for 1 mile.

Daum, Fred and Suzie (814) 354-2280
Hillside Acres Cell: (814) 229-3786
21969 Route 208, Tionesta, PA 16353
Clarion County
E-mail: hillside@venustel.com
Rt. 208 2.5 miles east of Fryburg, PA.

Dobbin, Jeremy (717) 896-8723
Ridgeside Acres
504 Ridge Road
Halifax, PA 17032
Dauphin County
E-Mail: dobbin123@comcast.net
From Harrisburg follow US - 22W and PA-225N to Bunker Hill Rd. Drive to Ridge Rd in Halifax Twp

Downs, David, Annette, Sara, and Cody (724) 376-7195
194 Stock Farm Road, Jackson Center, PA 16133
Mercer County
E-mail: annettedowns@ymail.com

Druck, Philip (814) 628-4422
1099 Grimes Hill Road, Sabinsville, PA 16943
Tioga County
E-mail: phildruck@yahoo.com
North of Gaines on Rt. 349; from Rt. 6 approximately 6 miles to left on Grimes Hill Road.

Indiana County, PA

Home of one of the top
Simmental Breeders
And Club Calf
Producers.

Woodview Simmental Farm

Frank and Susan Glass

***Olivia, Ivy, Amber, and
Kaycee Long***

1801 Grange Road
Blairsville, PA 15717
(724) 599-4612

E-mail: sunnysue831@gmail.com

E&R Farms, Inc

Pure Bred Simmental



Randy R. Runk

Vice President
& General Manager

17299 Hill Valley Road
Shirleysburg, PA 17260
(814) 542-2154
Cell: (814) 599-3377



Registered Simmentals

**DOUBLE RD
FARM**



400 River Road, Hillsborough, NJ 08844

Ron & Rhonda
Dziembowski

Phone: 774-289-4564
Cell: 908-448-7203

***New Incentive Program for
Pennsylvania Juniors
For details go to:
pasimmental.com***

Dziembowski, Ron and Rhonda
Double RD Farm
400 River Road, Hillsborough, NJ 08844
Somerset County
E-mail: **RLUVSANGUS@aol.com**

(908) 448-7203
(774) 289-4564

Feight, Bradley
Feight Show Stock
2672 Mountain Chapel Road, Breezewood, PA 15533
Bedford County
E-mail: **feibra60@pct.edu**

Cell: (814) 502-8973

Fox, Brent
FWB Simmentals
169 Dellville Road, Duncannon, PA 17020
Perry County
E-mail: **bfox5@ptd.net**

(717) 649-2192

11 & 15 to 274 West, go approximately 1 mile to Dellville Road (on left). Go approximately .7 tenths of a mile to 169 on left.

Glass, Frank and Susan
Woodview Simmental Farm
1801 Grange Road, Blairsville, PA 15717
Indiana County
E-mail: **sunnysue831@gmail.com**

(724) 599-4612

From Rt. 22 at Blairsville Exit take Rt. 217 North about 3 miles to Grange Road. Take left on Grange Road and go about 1 1/2 miles to farm.

Goss, Tim
Goss Family Farm
90 Decatur Road, McClure, PA 17841
Mifflin County
E-mail: **gossfamilyfarm@gmail.com**

(717) 543-6128

Graham, Galen, Nichole, Levi, and Grace Galen's Cell: **(717) 968-3643**
NikLen Valley Farm Nichole's Cell: **(717) 968-6635**
13820 Wolf Road, Felton, PA 17322
York County
E-mail: **nikkig7391@gmail.com**

Gromlich, Bruce
SASA Farms
121 Schappell Road, Hamburg, PA 19526
Berks County
E-mail: **sasafarms@copper.net**

(610) 562-5737
Cell: (610) 334-9847

78-61 South, go 2 miles, turn left on Schappell Road, 2 1/2 miles, farm on right.

Porter's Simmental Lake Ranch



The Porter Family
81 Porters Simmental Lane
Waverly, NY 14892

Phone: (607) 565-2452 Fax: (607) 565-8670

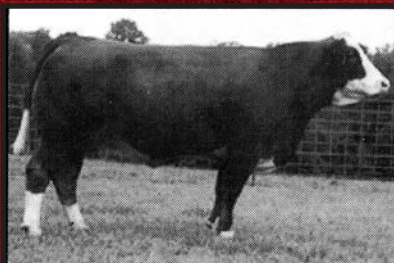
E-mail: portersimm@clarityconnect.com

Web site: www.portersconcrete.com



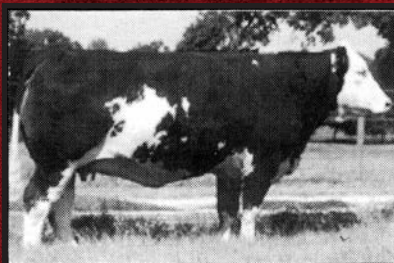
Full Fleckvieh

T2 Astrid F17



Astrid is a star in every sense of the word. Her pedigree includes the great Rachel cow family which has proved to be one of the most prolific producers of great females of any cow family in North America. She is one of our top donor cows.

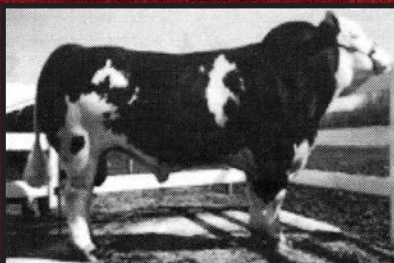
Ms JMC Else G391



Else is a truly unique full Fleckvieh cow. She is an extremely long, thick, attractive, Holb daughter out of the great Luba cow. She is one of our top donor cows.

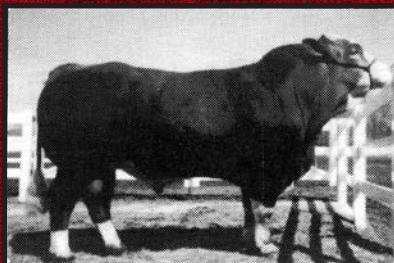
We have been fortunate to assemble a small group of quality full Fleckvieh bulls as well as excellent donor cows, some of which will be flushed for the first time this year. Calves out of our superior full Fleckvieh bulls, Hafke and Kaiser are weaning at astonishing rates.

Mr JMC Hafke F392



Hafke is the best bull Fleckvieh son alive in North America today. Here is an opportunity to buy semen out of a known son of "Hafke", the great German meat sire known for tremendous muscling.

Mr JMC Kaiser F302



Kaiser is a son out of Great Guns Karl 17C, and his dam is Adria 11A, one of the most powerful Fleckvieh cows in the breed today. He is dark red, double ring-eyed, with tremendous muscling from front to rear.

**Semen \$25 a straw, 5-straw minimum
Call us today for information about embryos.**

Gumaer, Ken and Mary

(716) 735-7904

Ladybug Farm

Cell: (716) 830-8149

9335 Pearson Road, Middleport, NY 14105

Niagara County

E-mail: **marygumaer@aol.com**

From Rt. 31 North on Carmen Road, 1 1/2 miles left on Pearson Road; 1 mile on north side after Drum Road.

Harris, John and Vickie

(814) 339-7752

Harris Farms

1603 Bucket Line Road, Osceola Mills, PA 16666

Clearfield County

E-mail: **obx.wmn@gmail.com**

From red light in Osceola Mills, to up hill, follow road 1.2 miles, first farm on left.

Hebel, Ken

(717) 469-2537

HEB Farms

cell (717) 460-3844

1067 Gravel Hill Road, Grantville, PA 17028

Lebanon County

E-mail: **cahebel@verizon.net**

2 miles south of exit 80 off Route 81. 1st farm after 1st crossroad on Gravel Hill Road.

Herr, Jack

(717) 507-8342

JEH Simmentals

P.O. Box 101, 105 Maple Drive, Fredericksburg, PA 17026

Lebanon County

E-mail: **jehsimm@aol.com**

Hissong, Claudia

(717) 977-8135

Double C Farm

225 Martin Rd, Greencastle, PA 17225

Franklin County

Claudiahissong@yahoo.com

Hook, Steve and Wanda

(570) 837-7020

Ste-Wan Farms

4751 New Berlin Highway, Middleburg, PA 17842

Snyder County

E-mail: **stewanfarms@verizon.net**

Gallagher Printing Ad

Hotchkiss, Douglas & Molly (716) 969-1553

Nazareth Hill Farm

385 Einink Rd, Clymer, NY 14724

Chautauqua County

E-mail: dhotchkissim@gmail.com

Householder, Dennis (724) 499-5112

Cassyle Valley Simmentals

435 Jacobs Run Road, Holbrook, PA 15341

Greene County

From Waynesburg, Rt. 21 west for 11 miles to village of Rutan. Left on Jacobs Run Road for 1.2 miles.

Lapp, Joe (717) 363-6628

Green Ridge Simmental

120 Slate Ln, McVeytown, PA 17051

Lay, William and Kathleen (410) 679-0882

Folly Farm

Cell: (443) 307-7550

2210 Old Joppa Road, Joppa, MD 21085

Harford County

E-mail: laykb@aol.com

Lenzner, John E. and Geraldine (412) 741-2672

Lenzner Farms

Cell: (412) 780-0701

619 Duff Road, Sewickley, PA 15143

Allegheny County

E-mail: johnlenzner@aol.com

79 North, Mt. Nebo Exit (3 miles from interstate) Duff Road.

Loht, Noah (717) 953-2928

KNT Beef Farm

250 Road Apple Drive, McClure, PA 17841

Mifflin County

E-mail: noahloht@gmail.com

ELM SIDE FARM

Registered Simmental Cattle
Also Registered SimAngus Genetics

Show Calves and Breeding Stock for Sale

Cattle for the small Breeder,

calm dispositions

Visitors are always welcome - Call for directions



THE REYNOLDS FAMILY

Art, Barb, Roger and Darby

836 Little Dryden Rd Barn: 607-865-6888

Walton, N.Y. 13856 Cell: 607-434-3058

elmsidefarm@frontiernet.net

Lucariello, Steve and Barb

(716) 761-3509

Back Road Ranch

8105 Nettle Hill Road, Sherman, NY 14781

Chautauqua County

E-mail: backroadranch@gmail.com

Valerie L. and Duane Snee

Cell: (724) 554-0446

SVJ Farm

465 Ringland Road, Amity, PA 15311

Washington County

E-mail: valeriemankey@earthlink.net

Website: www.svjfarm.com

Mast, Andy

(740) 685-7014

Mast Simmentals

Cell: (740) 260-6620

519 Main St

Pleasant City, OH 43772

Guernsey County

E-mail: andymast66@gmail.com

McClure, C. Arnold and Linda

(814) 542-4748

McClure Mills Farms

Cell: (814) 591-2125

16381 Pump Station Road, Shirleysburg, PA 17260-9735

Huntingdon County

E-mail: arnoldmcclure@gmail.com

1 mile north of Shirleysburg on Pump Station Road.

McMichael, Gene and Elvira

(814) 623-7974

Stony Creek Simmentals

Cell: (814) 310-1464

3835 Milligans Cove Road, Manns Choice, PA 15550

Bedford County E-Mail McMichaelelvira@yahoo.com

From the PA Turnpike (East), take the Bedford Exit. Then go 30 West to 31 West. It will turn into SR 96. Continue south and turn left at White Sulphur Springs Road. Farm is 2 miles on right. From the PA Turnpike (West), take the Somerset Exit. Then to 31 East to Bard. Turn right at Bard and then left at SR 96. Turn right at White Sulphur Springs Road. Farm is 2 miles on the right.

Meadows, Yvone & Bill Long

(814) 654-7978

23438 Earnest Rd

Spartansburg, PA 16434

Crawford County

E-mail: longmeadows@icloud.com

Rt 77, South of Spartansburg, Turn onto Earnest Road, 2nd place on the right

Messick, Joe and Sally

(717) 602-4401

Messick Farms

2835 Schoolhouse Road, Middletown, PA 17057

Dauphin County

E-mail: messick85@comcast.net

PA Turnpike, Exit 247 to Rt. 283E. 1 mile to 441/Airport Exit. Rt. 441 N to first farm.

PAY ATTENTION

to Calving Ease
Your heifers are counting on you!



7SM71 IN FORCE

S D S IN FORCE 112Y

2593861 | Shear Force x In Focus

5/8 SM 3/8 AN | Homo. Black | Homo. Polled
He is a Calving Ease sire who adds Marbling and makes idea, moderate-framed replacement females.

CE: 15.3 BW: -3.4 WW: 50.6 YW: 72.2

MILK: 33.3 API: 156.1 TI: 76.9



7SM80 WIDE RANGE

CCR WIDE RANGE 9005A

2725666 | Graduate x In Dew Time

3/4 SM 1/4 AN | Homo. Black | Homo. Polled
Expect his bulls to be deep-bodied and stout-made and his daughters to have great udder quality.

CE: 13.2 BW: 0.2 WW: 82.2 YW: 126.3

MILK: 15.8 API: 127.8 TI: 77.1



7SM85 TRIPLE CROWN

GW TRIPLE CROWN 018C

2954741 | Nightride x Predestined

5/8 SM 3/8 AN | Homo. Black | Homo. Polled
A Calving Ease SimAngus™ choice that adds much more with a top Marbling and top API ranking.

CE: 14.8 BW: -1.7 WW: 73.3 YW: 121.2

MILK: 16.5 API: 172 TI: 90.4



7SM83 UNIFIED

TNT UNIFIED B203

2902090 | UNITED x Tanker

1/2 SM 1/2 AN | Homo. Black | Homo. Polled
Unique to his sire, UNIFIED is a Calving Ease option who possesses growth and carcass traits like UNITED.

CE: 18 BW: -2.4 WW: 77.3 YW: 116.9

MILK: 23.2 API: 132.1 TI: 81.6



YOUR SUCCESS *Our Passion.*

2623 Carolina Springs Road ♦ Rocky Mount VA 24151

Phone: (800) 227-6417 ♦ Web: www.selectsiresbeef.com

Metzker, Wesley, Hunter, and Keller (814) 931-2553
2nd Chances Cattle Co.
5334 Clover Creek Road, Williamsburg, PA 16693
Blair County
E-mail: wesmetzker@yahoo.com

Meyers, Laurie (717) 350-2516
Powell's Valley Simmentals
470 Million Dollar Road, Halifax, PA 17032
Dauphin County
E-mail: Laurie@pvsimm.com
Website: www.pvsimm.com
From Harrisburg, Rt. 322 West, exit on Rt. 147 North. Rt. 147 North for 4 miles. Turn right on Million Dollar Road. First farm on right.

Mills, Justin (724)689-2913
Mills Rolling Acres Farm, LLC
129 Lindner Lane
Smithton, PA 15479
Westmoreland County
E-mail: millsj87@gmail.com

Monroe, Tom and Cheryl (301) 293-3274
Highfields Farm
11500 Meeting House Road, Myersville, MD 21773
Frederick County
E-mail: t3monroe@xecu.net

Mytar, Chris and Alissa (217) 741-8892
CAM Cattle Co.
111 Palomino Place, Charles Town, WV 25414
Jefferson County
E-mail: amc6121@hotmail.com
Facebook: **Frosty Springs Farm**
Cattle can be seen at Frosty Springs Farm.

Nogan, Ann (717) 705-1689
Pennsylvania Center for Beef Excellence, Inc.
2301 N Cameron Street, Room 303, Harrisburg, PA 17110
Dauphin County
Email: anogancbe@gmail.com

PSA 2019 Directors



From Left - front row - Curry Wagner, Nichole Graham, Elena Poliskiewicz, Art Baron
Back row Cliff Orley, Jeremy Dobbin, Dan Workman, Steve Hook, David Downs not pictured: Joshua Pysher

SAVE THE DATE

JULY 13, 2019

**PSA FIELD DAY
SPEAKERS**

*Wagner Simmentals
Mount Union, PA*

*FOR DETAILS GO TO
PASIMMENTAL.COM*



Orley, Cliff and Lynn

CLO Simmentals

1486 Mt. Wilson Road, Lebanon, PA 17042

Lebanon County

E-mail: corley01@comcast.net

Website: www.keystonecattleservices.com

South of Hershey on Rt. 117 to Colebrook, PA. East 1/3 mile on Mine Road, farm on right.

(717) 964-2243

Cell: (717) 269-0128

Palmer, William

Palmer Cattle Co.

4563 Turkey Track Road, Linesville, PA 16424

Crawford County

(814) 282-1493

Poliskiewica, Elena

Poliskiewicz Stock Farm

2364 N. Delaware Dr.

Mt. Bethel, PA 18343

E-mail: Poliskiewiczstockfarm@yahoo.com

(570) 872-4470

Porter, Ralph E.

Porter's Simmental Lake Ranch

81 Porters Simmental Lane, Waverly, NY 14892

Tioga County

E-mail: portersimm@clarityconnect.com

Web site: www.portersconcrete.com

Three miles east of Waverly off of Route 17C.

(607) 565-2452

Cell: (607) 972-7221

Puderbaugh, Dean

Puderbaugh Farms

426 Talmar Rd, Unityville, PA 17774

E-mail: dpuderbaughfamrs@icloud.com

(570) 204-1967

Pysher, Joshua

5163 Glenbrook Rd, Strousburg, PA 18360

E-mail: jmp369psu@hotmail.com

(570) 856-3249

Regula, Edward J. and Toni Gail

Cher-O-Kee Cattle Co.

Home of Denver Champion Lazy H Burn Right T26

P.O. Box 125, Brownfield, PA 15416

Fayette County

E-mail: rag857@atlanticbb.net

One mile off of Route 40 (Uniontown) on Hopwood Fairchange Road.

(724) 439-4179

Cell: (724) 322-1813

GENETIC VISIONS, LLC

**Providing quality Embryo Transfer services
to the Northeast for over 30 years!**

- ❖ *In clinic housing for donors*
- ❖ *On farm procedures*
- ❖ *Third party recipients available*
- ❖ *Fetal ultrasound sexing for ET clients*
- ❖ *Frozen embryos available – Call for
current pedigrees and pricing*

Levi D. Smith DVM

Mobile: 717-372-9788
Shippensburg, Pennsylvania

Reynolds, Art and Barb

(607) 865-6888

Elm Side Farm

836 Little Dryden Road, Walton, NY 13856

Delaware County

E-mail: **elmsidefarm@gmail.com**

I 88 to Exit 8 206 East go 16 miles to county Rt 47. Turn right go 3/4 mile to farm on right

.Rugenstein, Randy, and Karen

(585) 398-2273

Amy and Mike Pyra

Cell: (585) 615-8776

Rebecca and Tom Snyder

Rugenstein Family Farm

1848 Risser Rd

Canandaigua, NY 14424

Ontario County

E-mail: **RFFarm@hotmail.com**

5 miles north of Canandaigua; Rte 332 to Farmington Towline Rd, turn right; Cross county Rd 8 to Risser Rd turn right; first house - farm on right

Ruggles, Ron, Amy, and Molly

(740) 972-1030

Homestead Acres

2103 County Road 159, Ashley, OH 43003

Morrow County

Runk, Randy

(814) 542-2154

E&R Farms LP

Cell: (814) 599-3377

17299 Hill Valley Road, Shirleysburg, PA 17260

Huntingdon County

E-mail: **randy.runk@gmail.com**

Runkle, Sally Messick

(717) 944-1707

Messick Farms

Cell: (717) 602-4401

180 Newberry Road, Middletown, PA 17057

Dauphin County

E-mail: **srunkle180@yahoo.com**

Schadel, Neal and Darlane

(570) 682-8562

144 Coleman Road, Hegins, PA 17938

Schuylkill County

E-mail: **chickencoop144@gmail.com**

Rt. 25; 8 miles west of Hegins. Turn right on Honeymoon Trail after Wenger Feed Mill; 1/2 mile turn right onto Coleman Church Road. Farm on left after church.

Pennsylvania Simmental Association

Application for Membership

www.pasimmental.com

Member Name: _____

Farm Name: _____

Address: _____

City: _____ State: _____ Zip: _____

Telephone Number: (_____) _____ County: _____

Directions to Farm: _____

E-mail: _____

Web Site: _____

I am willing to work on a committee. My preference is _____

\$40.00 Full Member _____

\$35.00 Early Bird Discount _____ *(To receive Early Bird pricing,
application must be postmarked by December 15)*

I agree to abide and be bound by the Constitution, By-Laws and regulations of the Pennsylvania Simmental Association, Inc.

Signature: _____ Date: _____

Send to:

**Rhonda Dziembowski
400 River Rd - Hillsborough, NJ 08844
Phone: (774) 289-4564
E-mail: rluvsangus@aol.com**

Charmont Farms

*Raising Red & Black Simmental Cattle since 1984
specializing in purebreds*

Multiple Top 10 & 20 Bred and Owned
placings at Junior Regionals & Nationals

Multiple State Fair Division Winners

2018 Reserve Champion Female & Bull
at West Virginia State Fair



Ranked in Top 20 Herds in 2012 for
Sustainability based on calf crop

ASA 2006 Cow Award ER Belle H37 Ranked
in top 10% of breed for TI

2006 Charmont Vendetta Reserve Champion
Bull at NAILE

1988 Reserve Champion Female in Junior
Show at National Western Stock Show

Always welcome to visitors or anyone who wants to sit and talk cattle

Robert, Lois, & Jeff Cowdrey
5592 Herrmann Rd
Ripley, Ohio
937-373-3921

Brian, Jenny, Justin & Katelyn Cowdrey
Brown County Vet Service
7932 US 62
Russellville, Oh
937-515-0290



On The Edge Farm OEF Simmental

**6408 Route 249
Westfield, PA
16950**

**Call or Text us!
570-404-1026**



Tucker & HPF Sazerac, Jamie & HPF Knockout,
Teresa & SSC Shocking You, Gavin & MRC Worth It All

Exciting Pregnancies due Spring 2019!!

Cowboy Cut x Shell Shocked
J Nightride x TKCC Classified
Rimrock x Zenith
Bozeman x Wide Open
United x Milestone
Executive Order x HOC Broker
PLUS HPF Optimizer, WC Last
Call, CNS Pays to Dream and
WPCC High Regard (Yardley High Regard x HPF Delightful)



Tucker showing MRC Worth It All
Grand Champion SimAngus at PA Field Day

Ladies of OEF Simmental



**Like us on
Facebook
at
"OEF Simmental"**

Shell

Shocked



© Annie Duncan

Semen
\$30/unit

ASA# 2880060 • Homozygous Polled • Top 1% in Breed in Calving Ease

Sire: Remington Secret Weapon 185 Dam: Lazy H Shez Too Cool W58

Make it happen...SHOCK everyone!



CATTLE Visions



Nashville, Tennessee
Ken Butner, Owner 615.405.6105
Randy Favorite, Manager 931.588.1210
www.kencocattle.com

Contact owners, Cattle Visions, Doug Parke 859.421.6100
Canadian semen – contact Canadian Sires, Scott Bohrsen 403.370.3010



Ellisville, MS
Todd Fenton 601.498.4946
Scott Fenton • 601.422.8656
e-mail fenton.farms@yahoo.com
www.fentonsimmentals.com



Greg & Sam Stewart
2016 Armstrong Valley Rd.
Hallifax, PA 17032
717.350.5235, Greg 814.952.2533, Sam



Haefner

\$30/unit

HPF TRADECRAFT ID01

Sire: **JF Milestone 999W** ASA# 3124189

Dam: **RP/MP Right To Love 015U**

Homozygous Polled

CATTLE *Visions*

TRADECRAFT IF
ACTED UPON CAN
CHANGE OUTCOMES...



Place your order
with the Owners
or Cattle Visions
today!

Greg & Sam Stewart

2016 Armstrong Valley Rd. Halifax, PA 17032

717.350.5235, Greg 814.952.2533, Sam





Gettysburg Stars & Stripes

MAY 4, 2019

GROUP MEMBERS

Mountain View Farms

SVJ Farm

CLO Simmentals

Simme Valley Ranch

Elm Side Farm

Powell's Valley Simmentals

Stewart's Simmental Cattle

Curry Wagner Simmental Farm

Ladybug Farm

Hillcrest Farm

Pine Creek Cattle Co.

Green Ridge Farm

On the Edge Farm

Creek Bend Farm

MAY 2, 2020



Doug & Debbie Parke • 859.421.6100
Drew & Holli Hatmaker • 423.506.8844
153 Bourbon Hills • Paris KY 40361
859.987.5758 • office@dpsalesllc.com
www.dpsalesllc.com

Forever Running Farms

Reg. Simmental

For Sale: Bulls, Heifers, and Steers

Annies Gunslinger Pistol

Grandmaster's Annie x SS/PRS Gunslinger 824X

2016 Grand
Champion Bred
and owned, PA
State Farm
show

Grand
Champion
Division 2017
Junior and
open show, PA
State Farm
show



Mochas Loaded Girl

Mocha x Lazy H Lock and Load A14



2016 Supreme
Champion,
Ashtabula
County Fair

Reserve
Champion
Division 2017
open show, PA
State Farm
show

Hazel Baron
Art Baron
Donald Baron

Email: h18469@verizon.net
Email: dobaron4040@gmail.com
Telephone: (814) 398-8211

18469 Price Rd • Saegertown Pa, 16433

Scherich, Rodney

(724) 428-3555

Scherich's Simmental Farm

325 Wheeling Creek Road, Windridge, PA 15380

Greene County

From Waynesburg, take Route 21 West to Ryerson Station. Turn right on Wheeling Creek Road. Go one mile to first farm on left.

Shaffer, Paul M.

(814) 623-7361

1149 Pensyl Hollow Road, Bedford, PA 15522

Cell: (419) 349-3433

Bedford County

Exit PA Tpk. #146. After toll to light turn left go approximately 2 miles to stop sign turn left to 2nd farm on right uphill side of trailer park.

Shoemaker, William E.

(814) 624-0667

Shoemaker's Simmentals

Cell: (412) 721-8814

3839 Milligans Cove Road, Manns Choice, PA 15550

Bedford County

E-mail: shoesim@yahoo.com

From the PA Turnpike (East), take the Bedford Exit. Then go 30 West to 31 West. It will turn into SR 96. Continue south and turn left at White Sulphur Springs Road. Farm is 2 miles on left. From the PA Turnpike (West), the Somerset Exit. Then to 31 East to Bard. Turn right at Bard and then left at SR 96. Turn Right at White Sulphur Springs Road. Farm is 2 miles on the left.

Smithson, Ricky, Debbie, and Shane

(443) 463-4641

Pond View Farm

2531 Jolly Acres Road, White Hall, MD 21161

Harford County

E-mail: rick@pondviewfarm.com

Website: www.pondviewfarm.com

St. Peter, Teresa

(570) 404-1110

On The Edge Farm

6408 Rte 249, Westfield, PA 16950

Tioga County

Email: tuckedge37@gmail.com

Traveling north take SR 249 for 12 miles farm is on right> Traveling South take SR249 for 2 miles farm is on left.

STRONGHOLD

CATTLE HANDLING EQUIPMENT

The Brand That's Built to Handle Yours

StrongHold Cattlemaster 640:

- Heavy-duty manual headgate
- Humping bar
- Side exit on both sides
- Ratchet bar side squeeze
- Flex cutting gate
- Palpation cage
- Restraining pipe
- Diamond plate floor
- Available with digital scale
- Optional wheel assembly for portability



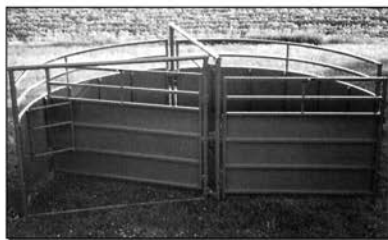
StrongHold Heavy-Duty Alley Way:

- Easy glide Nylatron movement
- Interchangeable brackets maximize positioning
- Infinite and secure adjustment
- Ground clearance of moving parts is six inches
- Pre-punched for Alley Can't Back
- Alley adjusts from less than 15 inches to 28+ inches



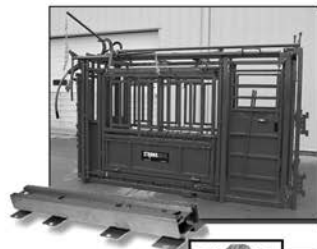
StrongHold Heavy-Duty Alley Way:

- Eight-foot sweeping radius
- Spring-loaded crowding gate latch
- 14 gate locking points
- Heavy-duty towing hitch
- Folds in half to six feet wide



All StrongHold Chutes are Scale-Ready*:

- Digital read out
 - Reliable and accurate (1% error or less)
 - Low profile
 - AC/DC or battery powered
 - Weather resistant
 - Urethane outer jackets on cable connections
- *Cattlemaster 440 requires weldment option



Your local StrongHold contact:

EASTERN STATES LIVESTOCK SYSTEMS

1563 Oak Grove Road
Breezewood, PA 15533
814.977.0848



Frank "Butch" Otto
1-800-242-3240

Stewart, Greg, Nicole, Grady, and Sam

Greg: (717) 350-5235

Stewart's Simmental Cattle

2016 Armstrong Valley Road, Halifax, PA 17032

Dauphin County

E-mail: wgjstewart@hotmail.com

Taylor, Ronald, Kathi, and Bailey

(570) 256-3482

White House Farm

Cell: (570) 578-3086

887 Hunlock Harveyville Road, Shickshinny, PA 18655

Luzerne County

E-mail: taylorfarm@msn.com

10 miles off US Rt. 11, on St. Rt. 4016.

Thurston Matt and Jade Gianforte

(207) 357-8900

61 Route 322

Rumford, ME 04276

Varner, Gary L. and Vicki

(717) 463-2513

Sorrell Acres Farm

Gary's Cell: (717) 512-1891

8436 Mountain Road, McAlisterville, PA 17049

Juniata County

Vicki's Cell: (717) 724-7488

E-mail: gvarner@centurylink.net

Virgili, Ethan & Rachel

(724) 833-0462

ERV Cattle

890 Browns Ferry Rd, Carmichaels, PA 15320

Greene County

E-mail: erv5013@gmail.com

Vossler, William T. (Tom) and Barbara **(717) 337-1615**

Mountain View Farm

Cell: (717) 752-6823

665 Knoxlyn Road, Gettysburg, PA 17325

Adams County

E-mail: tvossler@comcast.net

Website: www.mountainviewsimmentals.com

From Rte 15 / Rt. 30 Interchange, take Rt. 30 West approximately 5 miles through and past Gettysburg. Left on Knoxlyn. 1.2 miles on Knoxlyn Road then right turn at Farm Road.

Wagner, Curry and Curry Jr.

(717) 943-2262

Curry Wagner Simmentals

Cell: (717) 991-0387

1423 Sand Beach Road, Hummelstown, PA 17036

Dauphin County

E-mail: CWSFarms58@gmail.com

Website: www.currywagnerfarms.com

NO BULL TOO BIG OR NASTY

**S
E
M
E
N**

Semen Freezing since 1983

Semen Fertility Evaluations



**S
E
M
E
N**

ZIMMERMAN'S CUSTOM FREEZING

131 Redwell Rd., New Holland, PA 17557
Phone: 717-355-2048 Cell: 717-940-1430

www.semenfreezing.com

ELK COUNTY SIMMENTALS

Fullblood Fleckveih Simmentals
...the breed that will improve your herd

Butch & Denise Casilio
1316 Water St. Ext.
Johnsonburg PA 15845
814-965-5079 814-335-2434

- Wanner, Devin J** (724) 825-3093
Dan-D-Don Farm
 1408 Mixtown Rd
 Sabinsville, PA 16943
 Tioga County
 Email: devin_wanner@hotmail.com
 Take PA349 to Sabinsville, PA turn at Mixtown Rd. Go 1/2 mile
- Weir, Mark, Lisa, Elizabeth** (717) 266-2530
 1175 Jerusalem School Road, Mount Wolf, PA 17347
 York County
 E-mail: chickens15@outlook.com
- Whipkey, Charles, Katrina, Wyatt, and Emmitt** (724) 499-5859
W&E Farm
 186 Tara Hill Road, Holbrook, PA 15341
 Greene County
 E--mail: katrina.whipkey@yahoo.com
- White, Jeanne** Cell: (607) 423-4888
Paradis, Phil (herdsman)
Simme Valley Ranch
 6493 Stauber Road, Groton, NY 13073
 Cayuga County
 E-mail: Jeanne@simmevalley.com
 Website: www.simmevalley.com
Route 81, Exit 12. Right on 281, left on Rt. 90. Go 5.5 miles. Left on Salt Road. 2nd left on Stauber Road.
- Whitmoyer, Cindy** Cell: (570) 449-0887
Whitmoyer's Mountain View
 1045 Pine Grove Road, Fredericksburg, PA 17026
 Lebanon County
 E-mail: cmwhitmoyer@live.com
Rt. 78 East of Rt. 81 to Exit 6. Turn left on Pine Grove Road—1 mile to first farm on right after Blue Mountain Road.
- Winslow, Josh & Steffani** (724) 541-0339
Full Circle Farms
 127 Rock Road, Dayton, PA 16222
 Armstrong County
 Email: steffhuff@gmail.com

Woolcock, Jerry and Ginger (570) 458-5340
Woolcock Farms

38 Reese Road, Orangeville, PA 17859
Columbia County

E-mail: gwoolcock@gmail.com

I-80, Exit 34, Route 42 North to Millville. At flashing light, take SR 254E 4.7 miles to Reese Road.

Workman, Dan & Stacy

Creek Bend Farm

1348 Harney Road, Littlestown, PA 17340
Adams County

E-Mail: truckin68ds@yahoo.com

From Route 15, take Gettysburg exit Route 97 South at the Gettysburg Outlets. Travel 2 miles make a right on Hoffman Home Rd. Follow 3 miles until the stop sign. Make a left on Harney Rd. Travel almost 2 miles. We're on the left

(717) 451-2188
Cell: (717) 451-2295

PENNSYLVANIA SIMMENTAL ASSOCIATION

2019 Membership Directory Advertising

Advertising in the Pennsylvania Simmental Association's annual Membership Directory is a great way of marketing your farm or business directly to potential customers. PSA Directories are distributed at most major livestock events, Simmental shows and sales in Pennsylvania and surrounding states!!!

Advertisement Sizes and Rates

Ad deadline is January 31, 2019.

Must receive print-ready files by the deadline.

*Now offering full bleed
and color advertisements!*

Ad Sizes

Full Page*.....5.5"W x 8.5"H
Half Page..... 4.5"W x 3.75"H
Quarter Page Horizontal....4.5"W x 1.87"H
Quarter Page Vertical.....1.87"W x 3.75"H

*Allow ¼" extra for full bleed ads, and keep important content ¼" inside the cut line.

Ad Rates

Black and White

Full Page (Full Bleed).....\$ 75.00
Half Page.....\$ 50.00
Quarter Page.....\$ 35.00

Color

Full Page (Full Bleed).....\$ 150.00
Half Page.....\$ 100.00
Quarter Page.....\$ 70.00

If you are interested in advertising in the 2019 PSA Directory, please contact Steve Hook.

Steve Hook

Phone: 570-837-7020

Membership Listing

Cross-Referenced by Farm Name

2nd Chances Cattle Co.....	Wesley, Hunter, & Keller Metzker.....	(814) 931-2553
Back Road Ranch.....	Steve & Barb Lucariello	(716) 761-3509
Buena Vista Simmentals	Jim & Betty Bosley.....	(304) 530-6636
CAM Cattle Company	Chris & Alissa Mytar	(217) 741-8892
Campbell Land & Cattle LLC.....	James & Jackie Campbell	(724) 852-1622
Carlisle Farm.....	Barbara Carlisle	(724) 312-2746
Cassyle Valley Simmentals.....	Dennis Householder.....	(724) 499-5112
Charmont Farm	Bud & Lois Cowdrey	(937) 373-3921
Classic Farms.....	Chris & Kellee Brown	(304) 366-5353
.....	Mollee, Tyler, & Carter Brown.....
CLO Simmentals.....	Cliff & Lynn Orley.....	(717) 964-2243
Creek Bend Farm.....	Dan & Stacy Workman.....	(717) 451-2188
Crum's Circle C	Bob & Jenny Crum	(740) 213-7727
Curry Wagner Simmentals	Curry & Curry Jr. Wagner.....	(717) 991-0387
Dan-D-Don Farm	Devin Wanner	(724) 825-3093
Double "B" Venture	John & Rita Bayler.....	(717) 641-3151
Double RD Farm.....	Ron & Rhonda Dziembowski	(774) 289-4564
E&R Farms	Randy Runk	(814) 542-2154
Elk County Simmentals	Butch & Denise Casilio	(814) 965-5079
Elm Side Farm	Art & Barb Reynolds	(607) 865-6888
Feight Show Stock	Bradley Feight.....	(814) 502-8973
Folly Farm.....	William & Kathleen Lay.....	(410) 679-0882
Frosty Springs Farm.....	Jim & Billie Cowell	(724) 627-8271
Full Circle Farms.....	Josh & Steffani Winslow.....	(724) 541-0339
FWB Simmentals.....	Brent Fox	(717) 649-2192
Goss Family Farm.....	Tim Goss.....	(717) 543-6128
Green Ridge Simmental	Joe Lapp	(717) 363-6628
Harris Farms.....	John & Vickie Harris.....	(814) 339-7752
HEB Farms.....	Ken Hebel	(717) 469-2537
Highfields Farm	Tom & Cheryl Monroe.....	(301) 293-3274
Hillcrest Farm	Gary, Cindy, Stephanie, & John Bertrand.....	(508) 832-8313
Hillside Acres.....	Fred & Suzie Daum	(814) 354-2280
Homestead Acres	Ron, Amy, & Molly Ruggles	(740) 972-1030
JEH Simmentals.....	Jack Herr	(717) 507-8342
JMP Farms	Joshua Pysher	(570) 856-3249
KB Simmental.....	Kevin W. Bishop.....	(856) 358-3923
Keystone Cattle Service.....	Cliff & Lynn Orley.....	(717) 964-2243
KNT Beef Farm	Noah Loht.....	(717) 543-6185
Ladybug Farm.....	Ken & Mary Gumaer	(716) 735-7904
Lenzner Farms	John E. & Geraldine Lenzner.....	(412) 741-2672
Long Meadows Simmentals	Yvonne Meadows & Bill Long	(814) 654-797
M & B Acres	Bart Busby	(740) 269-8601
Mast Simmentals.....	Andy Mast.....	(740) 685-7014

Membership Listing Cross-Referenced by Farm Name

(CONTINUED)

McClure Mills Farms.....	C. Arnold & Linda McClure	(814) 542-4748
Messick Farms	Joe Messick.....	(717) 944-3500
.....	Sally Messick Runkle	(717) 944-1707
Mills Rolling Acres Farm, LLC	Justin Mills	(724) 689-2913
Mountain View Farm	William T. (Tom) & Barbara Vossler	(717) 337-1615
NikLen Valley Farm.....	Galen, Nichole, Levi, & Grace Graham	(717) 968-3643
Old Foundation Farm.....	Les & Bernie Brown	(814) 967-3503
On The Edge Farm	Teresa St. Peter	(570) 404-1110
Palmer Cattle Co.	William Palmer	(814) 282-1493
PA Center for Beef Excellence.....	Ann Nogan	(717) 705-1689
Pine Creek Show Cattle	Matt Thurston & Jade Gianforte	(207) 357-8900
Poliskiewicz Stock Farm	Elena Poliskiewicz	(570) 872-4470
Pond View Farm.....	Ricky, Debbie, & Shane Smithson.....	(443) 463-4641
Porter's Simmental Lake Ranch	Ralph E. Porter.....	(607) 565-2452
Powell's Valley Simmentals.....	Laurie Meyers	(717) 350-2516
.....	Annie Duncan	(717) 350-2515
Puderbaugh Farms	Dean Puderbaugh	(570) 204-1967
Rugenstein Family Farm.....	Randy & Karen.....	(585) 398-2273
.....	Amy & Mike Pyra.....
.....	Rebecca & Tom Snyder.....
SASA Farms.....	Bruce Gromlich.....	(610) 562-5737
Scherich's Simmental Farm	Rodney Scherich	(724) 428-3555
Serenity Hills Farm.....	Fred, Kim, Ellie, & Emily Benner	(717) 320-2303
Shoemaker's Simmentals.....	William E. Shoemaker	(814) 624-0667
Simme Valley Ranch.....	Jeanne White	(607) 423-4888
.....	Phil Paradis, Herdsman.....
Sorrell Acres Farm	Gary L. & Vicki Varner.....	(717) 463-2513
Ste-Wan Farms	Steve & Wanda Hook.....	(570) 837-7020
.....	Michael & Rhonda Arndt.....	(570) 847-9844
Stewart's Simmental Cattle.....	Greg, Nicole & Grady Stewart.....	(717) 350-5235
.....	Sam Stewart	(814) 952-2533
Stony Creek Simmentals.....	Gene & Elvira McMichael.....	(814) 623-7974
Sunrise Farms.....	Jonah & Abbey Broughton.....	(585) 356-0906
SVJ Farm	Valerie L. & Duane Snee	(724) 554-0446
W&E Farm.....	Charles, Katrina, Wyatt, & Emmitt Whipkey....	(724) 499-5859
White House Farm	Ronald, Kathi, & Bailey Taylor	(570) 256-3482
Whitmoyer's Mountain View.....	Les & Cindy Whitmoyer.....	(717) 865-2245
Woodview Simmental Farm.....	Frank & Susan Glass.....	(724) 599-4612
Woolcock Farms	Jerry & Ginger Woolcock	(570) 458-5340

Pennsylvania Simmental Association

2019 Members of the Year



Junior Member

Donald Baron

*From left: Ron Dziembowski, PSA
President, Donald Baron*



Senior Member

Rhonda Dziembowski

*From left: Ron Dziembowski PSA
President, Rhonda Dziembowski*

Breeder of the Year

SVJ Farm

Valerie & Duane Snee



Family of the Year

Curry Wagner Simmentals

*From left: Curry Wagner Jr., PSA
President Ron Dziembowski, Curry
Wagner*

FRAME SCORE CHART

Bull Hip Height (Inches)

Months of Age	Frame Score						
	3	4	5	6	7	8	9
5	37.5	39.5	41.6	43.6	45.6	47.7	49.7
6	38.8	40.8	42.9	44.9	46.9	48.9	51.0
7	40.0	42.1	44.1	46.1	48.1	50.1	51.2
8	41.2	43.2	45.2	47.2	49.3	51.3	53.3
9	42.3	44.3	46.3	48.3	50.3	52.3	54.3
10	43.3	45.3	47.3	49.3	51.3	53.3	55.3
11	44.2	46.2	48.2	50.2	52.2	54.2	56.2
12	45.0	47.0	49.0	51.0	53.0	55.0	57.0
13	45.8	47.8	49.8	51.8	53.8	55.8	57.7
14	46.5	48.5	50.4	52.4	54.4	56.4	58.4
15	47.1	49.1	51.1	53.0	55.0	57.0	59.0
16	47.6	49.6	51.6	53.6	55.6	57.5	59.5
18	48.5	50.5	52.4	54.4	56.4	58.4	60.3
20	49.1	51.0	53.0	55.0	56.9	58.9	60.9

Heifer Hip Height (Inches)

Months Of Age	Frame Score						
	3	4	5	6	7	8	9
5	37.2	39.3	41.3	43.4	45.5	47.5	49.6
6	38.2	40.3	42.3	44.4	46.5	48.5	50.6
7	39.2	41.2	43.3	45.3	47.4	49.4	51.5
8	40.1	42.1	44.1	46.2	48.2	50.2	52.3
9	40.9	42.9	44.9	47.0	49.0	51.0	53.0
10	41.6	43.7	45.7	47.7	49.7	51.7	53.8
11	42.3	44.3	46.4	48.4	50.4	52.4	54.4
12	43.0	45.0	47.0	49.0	51.0	53.0	55.0
13	43.6	45.5	47.5	49.5	51.5	53.5	55.5
14	44.1	46.1	48.0	50.0	53.0	54.0	56.0
15	44.5	46.5	48.5	50.5	52.4	54.4	56.4
16	44.9	46.9	48.9	50.8	52.8	54.8	56.7
18	45.6	47.5	49.5	51.4	53.4	55.3	57.3
20	46.0	47.9	49.8	51.8	53.7	55.6	57.6

COWBUYER.COM

Online Livestock Marketing

- Live Internet Bidding
- Online Webcast of Auctions
- Pre-Bidding and Absentee Bidding
- Tag/On Farm Sales
- Online Only Auctions



ANY DEVICE.

ANYWHERE.

ANYTIME.



Sharing the Passion

We understand the passion show families pass on from generation to generation. For over 75 years, we have shared that same passion through our commitment in providing lightweight aluminum trailers with stylish design, strong construction and solid resale value.



RUFF NECK shown with optional FINAL DRIVE package, aluminum wheels, plexiglas and spare.



MAVERICK LS BUMPER HITCH



TOWING BODIES



PUNCH PANEL GOOSENECK

Call Eby today for more information or to find a dealer near you.

M.H. Eby, Inc. (headquarters)
PO Box 127, 1194 Main St.
Blue Ball, PA 17506

800-292-4752

mheby.com

ABS

THE WORLD LEADER IN BOVINE GENETICS



Dream On

Still the One!

- ▶ Heterozygous black, DNA tested homozygous polled
- ▶ Leading source of calving ease, phenotype and indexes for the breed
- ▶ Perennial #1 bull for registrations in the breed
- ▶ The best return on investment for your semen dollar



Call your local ABS rep or call 1-800-ABS-Stud

Or call Doug Baker, District Business Manager, 570-850-1831

On the web -- Complete Sire listing and updates

www.absbeef.com

Member Farm Locations

Pennsylvania...

Adams County

Mountain View Farm
Creek Bend Farm

Allegheny County

Lenzner Farms

Armstrong County

Bussard, Gary & Paulette
Full Circle Farm

Bedford County

Feight Show Stock
Shaffer, Paul M.
Shoemaker's Simmentals
Stony Creek Simmentals

Berks County

SASA Farms

Blair County

2nd Chances Cattle Co.

Clarion County

Hillside Acres

Clearfield County

Harris Farms

Columbia County

Woolcock Farms

Crawford County

Forever Running Farm

Long Meadows
Palmer Cattle Co.

Dauphin County

Curry Wagner Simmentals
Dobbin, Jeremy
Messick Farms

Powell's Valley Simmentals
Stewart's Simmental Cattle

Elk County

Elk County Simmentals

Fayette County

Cher-O-Kee Cattle Co.

Greene County

Campbell Land & Cattle LLC
Cassyle Valley Simmentals
Frosty Springs Farm
Scherich's Simmental Farm
W&E Farm

Huntingdon County

E&R Farms LP
McClure Mills Farms

Indiana County

Woodview Simmental Farm

Juniata County

Serenity Hills Farm
Sorrell Acres Farm

Lebanon County

CLO Simmentals
Double "B" Venture
HEB Farms
JEH Simmentals
Whitmoyer's Mountain View

Luzerne County

White House Farm

Lycoming County

Puderbaugh Farms

Mercer County

Downs, David & Annette

Mifflin County

Goss Family Farm
Green Ridge Sommental
KNT Beef Farm

Monroe County JMP Farms

Northampton County Poliskiewicz Stock Farm

Perry County

FWB Simmentals

Schuylkill County

Schadel, Neal & Darlane

Snyder County

Ste-Wan Farms

Tioga County

Druck, Philip
Dan=D=Don Farm
On The Edge Farm

Washington County

Carlisle Farm
SVJ Farm

Westmoreland County

Mills Rolling Acres

York County

NikLen Valley Farm
Weir, Mark, Lisa, & Elizabeth

Massachusetts

Hillcrest Farm

New Jersey

Double RD Farm
KB Simmental
Paulus Farms

New York

Back Road Ranch
Elm Side Farm
Ladybug Farm
Porter's Simmental Lake Ranch
Rugenstein Family Farm
Simme Valley Ranch
Sunrise Farms

Ohio

Charmont Farms

Crum's Circle C
Homestead Acres
M & B Acres
Mast Simmental

Other states..

Maine *Pine Creek Show Cattle*

Maryland

Folly Farm
Highfields Farm
Pond View Farm

West Virginia

Buena Vista Simmentals
CAM Cattle Co.
Classic Farms

RULES AND BY-LAWS
PENNSYLVANIA SIMMENTAL ASSOCIATION, INC.
ARTICLE 1 — NAME

1. The name of this corporation shall be the Pennsylvania Simmental Association, Inc.

ARTICLE II — AIMS AND OBJECTIVES

1. The Pennsylvania Simmental Association has as its primary objective the development and promotion of the Simmental breed of cattle in the State of Pennsylvania. It is believed that the Simmental Breed can make an important contribution to the improvement of the cattle industry in Pennsylvania.

ARTICLE III — MEMBERSHIP

1. Application for membership must be made in writing to the Secretary-Treasurer of the Association.
2. The Board of Directors shall have the power to accept or reject any applications for membership. The Board of Directors shall have the power to suspend or expel any member who conducts himself in a manner detrimental to the Association or fails to comply with the rules and regulations without refund of membership fees or dues.
3. A member whose membership has been revoked must make a written application of reinstatement and can be reinstated only after having received three-fourths (3/4) affirmative vote from the Board of Directors.
4. Legal Partnerships or Incorporated Companies shall specify in writing the person authorized to vote or act in their behalf at any meeting of the Association.
5. Members may vote by proxy at the Annual Meeting if the delegate has in his possession the proxy of the undersigned membership, executed and sworn before a Notary Public.
6. Active Members shall be owners or breeders of cattle who pay the membership fee, and who are in good standing.
7. Associate Members are non-voting members who may be interested in advancement of the Association. Associate Members may not vote or hold elective offices.
8. (Amended January 14, 2006) Junior Members shall be those under 22 years of age who have paid the prescribed fee. Junior Members are not entitled to vote or to hold elective office except as herein after provided.
9. Honorary Members are individuals who have made an outstanding contribution to the development of the Simmental Breed in the State of Pennsylvania. They are elected by the general membership of the Association provided they have been recommended for such appointment by a prior resolution of the Board of Directors. Honorary memberships are not entitled to vote and may not hold elective offices.
10. Annual Dues: \$40.00 for Senior Members, \$10.00 for Junior Members.

ARTICLE IV — OFFICERS AND DIRECTORS

1. **Duties of Officers**
 - a. The President shall be the Chief Executive Officer of the Association. He shall preside at its meetings. He shall carry on the business of the Association under the Articles of Incorporation, the by-laws, and the instructions of the Board of Directors.
 - b. The Vice President, in the absence of the President, or at his request, shall perform the duties of said officer.
 - c. The Secretary-Treasurer may be a member of the Board of Directors, or he may be appointed or hired by the Directors. He shall manage and administer the business affairs of the Association in accordance with the policy and directives from the Board of Directors as communicated to him by the President. He shall be the official custodian of the seal and the records of the Association. He shall see to the financial affairs of the Association.
2. **Duties of the Directors**
 - a. (Revised March 28, 1986) The affairs of the Association shall be managed by a Board of Directors. Adult Directors shall be elected by written ballot at the Annual Meet-

ing of the Association. The Board of Directors shall consist of ten (10) Adult members and one (1) Junior member. Each adult Director shall be limited to two (2) three (3) year consecutive terms. He shall again be eligible for re-election after one (1) year's absence. The Junior Director shall be elected by written ballot at the Annual Meeting of the Pennsylvania Junior Simmental Association and shall serve a one (1) year term of office and shall be limited to two (2) consecutive terms. He shall again be eligible for re-election after one (1) year's absence.

b. The Directors shall elect from among the active members of the Pennsylvania Simmental Association a President and Vice President whose terms of office shall be one (1) year or until the next annual meeting. The Board of Directors may appoint additional officers as they see fit in order to carry out efficiently the affairs of the Association. However, only active paid up members in good standing may be officers.

c. The Board of Directors shall have the authority to appoint anyone that they see fit to the Board of Directors, to serve a one (1) year term.

d. Each person who shall serve as a Director or Officer of the Association shall be indemnified by the Association against all costs and expenses incurred by or imposed upon him, in connection with or resulting from any action, suit or proceeding to which he is, or may be made a party, by reason of his being or having been a Director or Officer of the Association. Such indemnifications shall include settlements made in amounts approved by the Board of Directors at the time such settlement is effected, whether or not such person is a Director or Officer at the time such costs are incurred by or imposed upon him. Except, the indemnifications shall not apply where he shall be finally adjudged to be liable by reason of having been negligent, guilty of misconduct or otherwise derelict in the performance of his duty as an Officer or Director. The rights of indemnification herein provided shall not be exclusive of other rights to which such person may be entitled as a matter of law.

ARTICLE V — MEETINGS

1. Membership Meetings

a. An Annual Membership Meeting shall be held once in every calendar year with a maximum time of fifteen (15) months between meetings. The time and place shall be designated by the Board of Directors. All members will be notified by letter or in the official organ of the Association at least thirty (30) days prior to such meeting. The order of business shall be mentioned in the notice of the meeting.

b. A quorum for Annual Membership Meeting shall consist of the Active Members in good standing present.

c. Only Active Members who are in good standing and those whose membership is paid are entitled to vote at any Annual Membership Meeting.

d. Standard parliamentary procedure will be followed at all meetings of the Association membership and at all meetings of the Board of Directors.

e. Special membership meetings may be held at the discretion of the Board of Directors. All members will be notified by letter at least ten (10) days prior to the meeting date. Special business shall be mentioned in the notice and no other business shall be transacted.

2. Board of Directors Meeting

a. The regular meeting of the Board of Directors shall be held each year in conjunction with and at the same place as the Annual Membership Meeting.

b. In addition to the meeting provided for in paragraph "a" above, the Directors shall meet annually at a time and place to be selected by the Board of Directors. This meeting shall occur approximately six (6) months prior to the next Annual Membership Meeting.

c. Special Meetings of the Board of Directors may be held on call of the President by giving ten (10) days notice in writing of time, place and purpose.

d. Five (5) Directors shall constitute a quorum at any Directors Meeting.

ARTICLE VI — COMMITTEES

1. **Rules Committee**

It shall be the duty of this Committee to interpret all rules and regulations, and to recommend such changes as they deem necessary to the Board of Directors for their approval.

2. **Financial Committee**

The Secretary-Treasurer shall be the Chairman of the two (2) Directors. Their purpose shall be to prepare a budget and submit it to the Board of Directors for their approval. They shall also make recommendations to the Board of Directors for the investment of available funds.

3. **Exhibition Committee**

This Committee shall make recommendations pertaining to live animal and carcass display.

4. **Membership Committee**

Shall promote and encourage membership in the Association.

5. **Sales Committee**

Shall set rules which uphold the performance and quality of the Simmental cattle in state sanctioned sales.

6. **Promotion Committee**

Shall make recommendations concerning the advertising and promotion of Simmental cattle to insure the proper image at sales.

ARTICLE VII — BY-LAW AMENDMENTS

1. The Board of Directors shall have the power to amend the By-Laws of this organization by a three-fourths (3/4) majority vote.
2. Any change or revision of the By-Laws as a result of Board action shall become effective within thirty (30) days after which such change is published and every member is notified.
3. Any amendments made by the Board of Directors may be suspended if the Secretary-Treasurer received a petition signed by ten percent (10%) of the membership within sixty (60) days from the date of notification of the change or revisions.
4. Any such action of the Board of Directors may be subject to the approval of the membership at the next Annual Membership Meeting.

ARTICLE VIII — RESTRICTIONS AND TERMINATION

1. No part of the net earnings of the Association shall inure to the benefit of, or be distributable to its Directors, officers or other private persons, except that the Association shall be authorized and empowered to pay reasonable compensation for services rendered, and to make payments and distributions in furtherance of the Aims and Objectives set forth in Article II hereof. The Association shall neither participate nor intervene in (including the publication or distribution of statements) any political campaign on behalf of or in opposition to any candidate for public office, nor shall it take a position on any issue raised in a political campaign for the purpose of aiding or opposing any candidate. Any other provision of these Bylaws to the contrary notwithstanding, the Association shall not carry on any activities not permitted to be carried on by a corporation exempt from Federal Income Tax under Section 501(a) and Section 501(c)(5) of the Internal Revenue Code of 1986, as amended, or the corresponding provisions of any subsequent tax laws of the United States (the "Code"). These Bylaws shall not be altered or amended in derogation of the provisions of this Section of this Article.
2. Upon the dissolution of the Association, its assets shall be distributed to a nonprofit association that promotes the breeding of Simmental Cattle for one or more exempt purposes, within the meaning of Section 501(c) (5) of the Code. Any such assets not so disposed of shall be disposed of by a court of competent jurisdiction of the county in which the principal office of the Association is then located, exclusively for such purposes. Upon the sale of substantially all of the assets or the dissolution of the Association, surplus shall not be utilized for the private interest of any person.

SSC Victoria's Secret 49B



Remington Secret Weapon x Lazy H Shez Too Cool W58

**High Selling Female at the
2016 Gettysburg Stars and Stripes Sale**

► *Embryos Available*

► *Progeny Available*



**SSC Secret
Society 22D**

*Daughter
of Victoria's
Secret 49B*

**Reserve Grand Champion Female
at the 2017 PA Farm Show Jr. Show**

Mast Simmentals - Andy Mast Family

519 Main Street, Pleasant City, OH 43772

Shop: (740) 685-1199

Cell: (740) 260-6620

Pennsylvania Junior Members

Bargo, Rachel
183 Crabapple Lane
Port Royal, PA 17082

Baron, Donald
18469 Price Rd
Saegertown, PA 16440

Dobbin, Ashley
504 Ridge Rd
Halifax, PA 17032

Dobbin, Kelsey
504 Ridge Rd
Halifax, PA 17032

Dobbin, Madison
504 Ridge Rd
Halifax, PA 17032

Downs, Sara
194 Stock Farm Rd
Jackson Center, PA 16133

Fry, Katie
20389 Route 35S
Mifflin, PA 17058

Gardner, Lane
3011 Middle Creek Rd
Beaver Springs, PA 17812

Graham, Grace
13820 Wolf Rd
Felton, PA 17322

Pennsylvania Junior Simmental Association

For full membership listing, please visit our website www.pasimmental.com!

PJSA Advisors

Rhonda Arndt

441 Hillside Drive
Middleburg, PA 17842
(570) 847-9844
farmchic3@hotmail.com

Officers and Royalty

President

Donald Baron
18469 Price Road
Saegertown, PA 16440

Vice President

Laura Henry
275 Kocher Rd
Elizabeth, PA 17023

PSA Queen

Ashley Dobbins
504 Ridge Rd
Halifax, PA 17032

Secretary

Sara Downs
194 Stock Farm Road
Jackson Ctr, PA 49466
(724) 376-7195

Treasurer

Keller Metzker
5334 Clover Creek
Williamsburg, PA 16693

PSA Princess

Kelsey Dobbins
504 Ridge Rd
Halifax, PA 17032

Pennsylvania Junior Simmental Association Application for Membership

www.pasimmental.com

Member Name: _____ Birth Date: _____

Farm Name: _____

Address: _____

City: _____ State: _____ Zip: _____

Telephone Number: (_____) _____ County: _____

E-mail: _____ Web Site: _____

\$10.00 Junior Membership _____

Signature _____ Date: _____

Send to:

Rhonda Arndt
441 Hillside Drive • Middleburg, PA 17842
Phone: (570) 847-9844 • E-mail: farmchic3@hotmail.com

Pennsylvania Junior Members

Henry, Laura
275 Kocher Rd
Elizabeth, PA 17023

Yetter, Jordan
296 Melvin Lane
Mifflin, PA 17058

Metzker, Hunter
5334 Clover Creek
Williamsburg, PA 16693

Metzker, Keller
5334 Clover Creek
Williamsburg, PA 16693

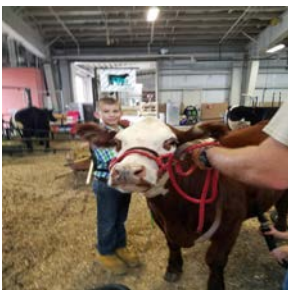
Puderbaugh, Chloe
426 Talmar Rd
P.O.Box 43
Unityville, PA 17774

Puderbaugh, Jacob
426 Talmar Rd
P.O.Box 43
Unityville, PA 17774

Stadtmiller, Mackenzie
127 Rock Rd
Dayton, PA 16222

Stewart, Grady
2016 Armstrong Valley Rd
Halifax, PA 17032

Workman, Luke
1348 Harney Rd
Littlestown, PA 17340



For Sale:
•Heifers
• Bulls

•Steers
•Donkeys

•Sim x Red
Angus

Frosty Springs Farm



**James and Billie Cowell
1214 Garards Fort Road,
Waynesburg, PA 15370**

Email: frostyspringsfarm@hotmail.com

Follow us on Facebook: Frosty Springs Farm

House Phone: 724-627-8271

Jim Cell: 724-986-8502

Billie Cell: 724-998-4355

**CAM Cattle Co.: Chris and Alissa Mytar
Livestock available for viewing at FSF**

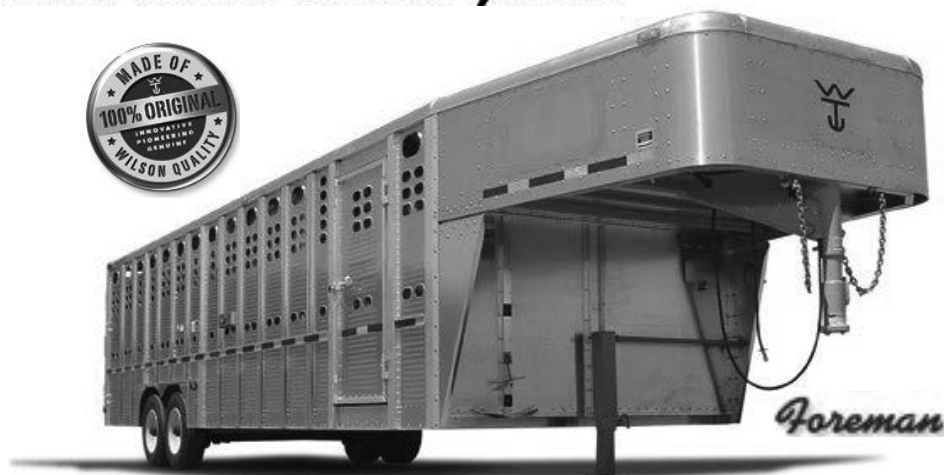
EMM

SALES & SERVICE, INC.

P.O. Box 255
141 Zooks Mill Rd
Brownstown, PA 17508

800-288-2081

EMMsales.com



 **Wilson** TRAILER
COMPANY

- *Long lasting aluminum construction resists corrosion.*
 - *The industry's original fully riveted trailer stronger than a welded trailer.*
 - *Embossed side panels for greater strength.*
- *Top dollar at trade-in time for best realized value.*
- *Featuring the patented rear door Slam Catch.*
- *Heavy-duty gates for reliable containment.*
- *Smooth interior walls that are gentler on livestock and easier to clean.*

CONSIDER THE BAR RAISED.



Vermeer mower conditioners combine exceptional performance, flexibility and convenience, and give operators control in even the toughest mowing conditions. The Q3™ Cutter Bar provides optimum performance with reduced horsepower requirements and is backed by a Vermeer 3-year cutter bar warranty. The Quick-Clip® Blade Retention System and Quick-Change™ Shear Ring simplify changing blades and repairing sheared discs. As far as mower conditioners go – the MC2800, MC3300 and MC3700 are a cut above the rest.

DECIDEDLY DIFFERENT.



VR Series wheel rakes from Vermeer deliver the extra strength, wide stance balance and reliability needed to handle a heavy diet of haying – starting with the first cut. Handle different crops and conditions and reset windrow widths with the drop of a pin. Plus, you can turn hay in the center of the swath with optional center splitter wheels. It's a wheel rake that's decidedly different.



Vermeer®
WILKINS AND SON EQUIPMENT

1708 Pinchot Road, Saxton, PA 16678

Office: 814-635-3392 Cell: 814-502-0968

Email: wilkinsequip@yahoo.com

Fax: 814-635-2993

Rugenstein Family Farm

Randy and Karen Rugenstein
Becky, Tom and Addison Snyder
Amy, Mike, Grant and Laramie Pyra

Canandaigua, NY
585-615-8776
rffarm@hotmail.com



Raising proven Simmental genetics that perform both in the pasture and in the show ring.



Aluminum Livestock Trailers ~ Show Feeds
Clipper Sales, Repairs and Sharpening
Border Collies

Weaver Grooming Supplies

Reg. Sim/Angus

www.freysupply.com

Fritz and Nancy Frey

1664 Furniss Rd
Drumore PA 17518
ph 717-548-1351

fax 717-548-0376

ffrey@freysupply.com

SASA FARMS



REGISTERED SIMMENTALS &
SIM/SOLUTIONS



BRED HEIFERS, BULLS
AND STEERS FOR SALE

SF



Show Heifers for sale

Bruce Gromlich
Home: 610-562-5737
Cell: 610-334-9847
DJ Gromlich : 610-334-1869
121 Schappell Rd.
Hamburg, PA 19526
sasafarms@copper.net



Rowe Nutrition Dealer
Contact DJ For Show Feed



Jeanne White, Owner
Phil Paradis, Manager
 Groton, NY
 607-423-4888 cell
 Jeanne@SimmeValley.com
 www.SimmeValley.com



Simme Valley Clinique



JF Milestone x CLO Sweet Sensation

S. with

9-4-15



Simme Valley De-Calf



9-13-16
S. with
 S. Upper Class x
 CLO Sweet Sensation



Consigning De-Calf to:
 Gettysburg
 Stars & Stripes Sale
 Full sibs for sale, also.



Show cattle & breeding stock for sale at all times. Bull calves & show steers available through the summer. We strive for Satisfied Customers.
 Our cattle work for us and their new owners, performing on grass in the summer and hay in the winter.
 Watch for our consignments to the Gettysburg Stars & Stripes Sale on the 1st Sat in May

CURRY WAGNER SIMMENTALS



www.CURRYWAGNERFARMS.com

Visitors always welcome!



CWSF Courtney C15

ASA# 3087129

Sold at the 2016 Stars & Stripes Sale



CWSF Chevelle C34

ASA# 3087144

Sold at the 2016 Stars & Stripes Sale



Authorized dealers of Cowco Livestock Equipment

Curry Wagner, Sr.

717-991-0387

Curry Wagner, Jr.

717-943-2262

1423 Sandbeach Road • Hummelstown, PA 17036

SHOEMAKER'S SIMMENTALS

2006 PA Farm Show Premier Breeder and Exhibitor



Shoemaker's Real Deal

2006 PA Farm Show Grand Champion Bull

Shoemaker's Miss Marker

STF Mr Momentum H508

Herd Sire - Shoemaker's Commander



Commander Offspring Offer Excellence in the Show Ring



Shoemaker's Lady Precept

2006 PA Farm Show
Grand Champion Simmental Heifer



Shoemaker's Salome

2006 PA Farm Show - Junior Show
Reserve Champion Simmental Heifer

Commander Offspring Also Offer Superior Performance

2003-2004 Pennsylvania Bull Test
2nd Highest Indexing Bull
3 of The Top 6 Highest Indexing Bulls

2005-2006 Pennsylvania Bull Test
2nd Highest Indexing Bull
3 of The Top 5 Highest Indexing Bulls

William Shoemaker

3839 Milligans Cove Road • Manns Choice, PA 15550

Telephone: (814) 624-0667 Cell: (412) 721-8814

Email: shoesim@yahoo.com

All Photos: Linde

Mountain View Simmentals

Purebred Simmental Beef Cattle



*Visitors are
always welcome.*

*Call for
directions.*



**Long yearling and yearling bulls for sale off the farm —
AI bred and MVS Maximus' sons.**

Call Tom at 717-752-6822 to see these great bulls.

**Host for the annual *Gettysburg Stars and Stripes Sale*
the first Saturday in May.**

Tom and Barbara Vossler
665 Knoxlyn Road
Gettysburg, PA 17325
717-337-1615 or cell 717-752-6823
email: tvossler@comcast.net

