

10th Annual



Gettysburg Stars & Stripes

May 6, 2017

12:30 EST

Gettysburg, PA



Sale Hosted By... Mountain View Farms
665 Knoxlyn Rd • Gettysburg, PA 17325
Tom and Barbara Vossler

Gettysburg Stars & Stripes

May 6, 2017

12:30 EST

Gettysburg, PA

Sale Day Phones:

717.337.1615, Tom Vossler home • 717.337.1613
717.752.6823, Tom Vossler cell • 859.421.6100, Doug Parke cell

Hotel Information:

Sale Headquarters

Hilton Garden Inn, 717.334.2040

1061 York Road (Route 30 East), Gettysburg, PA 17325

Group Rate: \$110.00

Group Code: SNS Group Name: Stars and Stripes

Other Hotels in the Area (No Group Rates):

Hampton Inn Gettysburg, 717.338.9121

1280 York Road, Gettysburg

Comfort Inn, 717.337.2400

871 York Road, Gettysburg

Days Inn, 717.334.0030

865 York Road, Gettysburg

Air Transportation:

Closest private airport is the Gettysburg airport, 1.5 miles from the farm, capable of handling twin engine prop planes. Closest commercial airport is Baltimore-Washington International (BWI) an hour and a half from the farm.



Sale Manager:

Doug & Debbie Parke • 859.421.6100

Drew & Holli Hatmaker • 423.506.8844

153 Bourbon Hills • Paris KY 40361

859.987.5758 • office@dpsalesllc.com

Sale Staff:

Bruce Miller

Shane Ryan

Bobby Grove

817-247-0115

309-371-7490

540-850-0266

Sale Consultants:

DP Sales Management

Doug Parke

Drew Hatmaker

Dalton Lundy

859-421-6100

423-506-8844

502-727-6898

Insurance:

Jame Secondino, American Livestock

765-832-2697

Trucking:

Mark Howard

Sam Harroun

865-300-3636

319-325-9389

Sale Terms and Conditions:

All buyer numbers will only be issued with a valid ID and payment is due day of sale. DP Sales Management would appreciate timely settlement of receivables within 15 days of date of sale. Any person not complying with that guideline will be pursued legally. DP Sales accepts Visa/Mastercard. Cattle will not be transferred until paid for in full. Cattle will sell under Suggested Sale Terms and Conditions of the American Simmental Association For updated terms and details go to www.simmental.org.

Announcements:

Announcements made sale day from the auction block during the sale take precedence over printed material associated with this sale. Anyone attending this sale attends at his or her own risk, neither sale management nor Mountain View Farm assume liability for accidents or loss of property. DP Sales Management is only an agent for the seller and has no responsibilities other than those involved in conducting the sale. Mountain View Farm is BQA certified and certified Johnnes free herd.

Sexed Heifer Semen:

Sexed semen is not 100% accurate, therefore Gettysburg Stars & Stripes consignors can not guarantee gender of resulting calves.

EPDs:

Please note the EPDs may change from the time the sale catalog is printed until registration papers are transferred. EPDs listed are the new Spring 2017 numbers.

Directions to Sale Site:

From the North, South or West, take the I-81 exit for Route 30 East at Chambersburg toward Gettysburg. After crossing over South Mountain, look for road signs directing you to "Land of Little Horses" and "KOA Campground". These signs will alert you to the right hand turn from Route 30 onto Knoxlyn Road. After making the turn onto Knoxlyn Road, our farm lane entrance will be 1.4 miles on the right. Vehicles with trailers please take the second entrance and follow signs to the trailer parking area.

From the North, South or East, take Route 30 West from Route 15 thru the town of Gettysburg. Three miles on Route 30 West from the Gettysburg town square (traffic circle), you will make a left hand turn onto Knoxlyn Road. Road signs for "Land of Little Horses" and "KOA Campground" will alert you to the turn. After making the turn onto Knoxlyn Road, our farm lane entrance will be 1.4 miles on the right. Vehicles with trailers please take the second entrance and follow signs to the trailer parking area.

Lunch will be served sale day by Biggerstaff Catering!





Welcome to Gettysburg!

The breeder/consignors of the Gettysburg Stars and Stripes Sales Group wish a sincere welcome to friends and prospective buyers to our 10th annual sale. This year is an important milestone for us and it is amazing how much time has passed-by since we first started producing this sale in 2007.

It is important to note that our sale format has not changed in all of those years because it has proven to be a good one. As in previous years, sale cattle will be placed in fenced but open lots here on the farm prior to sale. They will be sorted by kind, relaxed and grazing so you can view them in their natural state from noon Friday until sale time. If you come out to the farm on Friday for a preview of the possibilities, the sale consignors and breeders will be available throughout the day on Friday May 5th and sale day morning to answer any questions you might have. If you do arrive on Friday, drop your cattle trailer in the trailer parking lot at the farm before going back into town. In any case feel free to view the animals Friday afternoon and stay for a social gathering - food and beverages - on the patio behind the house beginning at 5:00pm.

The actual sale will be held Saturday afternoon in our sale barn facility immediately adjacent to the open lots. A catered sale day lunch of BBQ Beef Brisket by Biggerstaff's Catering will be provided to you prior to the sale, courtesy of our partnering sponsors from local agri-business companies. Please see our partnering sponsor ads in the catalog and be sure to thank them for your meal. For those of you who have not been to Gettysburg before, you will find attending this sale can be a great family mini-vacation with plenty of history, antiques and other attractions to keep you busy in addition to the cattle sale.

For those of you who participate in the sale thru our arrangement with DV Auctions, we will miss your physical presence with us but certainly appreciate your interest and participation in the sale. Last year DV auctions and the Internet helped us make our cattle available to buyers as far west as Oregon, as far north as South Dakota and as far south as Georgia and Tennessee. We are fortunate to have an expert team of haulers available to move cattle quickly from the sale barn to new owners throughout North America.

We have arranged for a complimentary guided tour of the Gettysburg Battlefield on Friday afternoon leaving the sale barn at 1:00 pm. The tour will last about two and one-half hours. See full tour information elsewhere in this catalog. Please call ahead (717-337-1615) to reserve your space for the battlefield tour.

Once again, we are pleased to offer complimentary drinks and snacks on the patio at the house late Friday afternoon/early evening.

You will find in this catalog reserved motel information for your stay. We highly encourage you to call and make your reservations early as this sale occurs at the start of the very busy Gettysburg tourist season.

We look forward to seeing you here.

Sincerely,

Tom and Barbara Vossler
Mountain View Farm &
Stars and Stripes Sales Group



Date Consignments...

Mountain View Farm

Tom and Barbara Vossler
665 Knoxlyn Rd • Gettysburg, PA
717-337-1615

CLO Simmentals

Cliff & Lynn Orley
1486 Mt Wilson Rd • Lebanon, PA
717-964-2243 • 717-269-0128

SVJ Farm

Duane and Valarie Snee
465 Ringland Ridge Rd • Amity, PA
724-554-0446

Hudson Pines Farm

180 Bedford Rd. • Sleepy Hollow, NY
John Walston • 914-631-115
Ryan Haefner • 815-499-0522

JEH Simmentals

Jack Herr
Box 101 • Fredericksburg, PA
717-507-8342

Simme Valley Ranch

Jeanne White
6493 Stauber Rd • Groton, NY
607-423-4888

Elm Side Farm

Art Reynolds
836 Little Dryden Rd • Walton, NY
607-434-3058

Powell's Valley Simmentals

Laurie Meyers
470 Million Dollar Rd • Halifax, PA
717-350-2516

Kevin and Ward Bishop

29 Pine Tavern Rd • Elmer, NJ
856-358-3923 • 856-297-3813

Stewart's Simmental Cattle

Greg & Sam Stewart
2016 Armstrong Valley • Halifax, PA
717 350 5235

Curry Wagner Simmentals

Curry & Junior Wagner
1423 Sand Beach Rd • Hummelstown, PA
717-991-0387

Ladybug Farm

Ken & Mary Gumaer
9335 Pearson Rd • Middleport, NY
716-735-7904

Hillcrest Farm

Gary & Cindy Bertrand
148 Millbury St. • Auburn, MA
508-823-8313



WAR Diva M704 - reference

1 CLO American Maiden 70Z

3/20/12 • 2651763 • 70Z • 78

CNS Pays To Dream T759

CNS Dream On L186
MLF BL Jessie K336
Hart Black Oasis F301
JBH Sheza Dandy

War Diva M704

Purebred

CE	BW	WW	YW	MCE	MILK	MWW	MARB	REA	API
12	2.1	55	86	8	17	45	0.23	0.77	127

- This may be on of the last changes to own a direct daughter of one of the matriarchs of the breed! This lot select was not an easy decision as The Diva daughters are really good and productive and especially hard to part with. The mating that created "Maddie" stands at the top of numerous shows and sales over the last decade and beyond. It's all about cow families. The combination of Diva with Pays To Dream resulted in a moderate framed, sound structured, good uddered cow that can produce superior progeny and Maddie is one of a kind! 70Z's API says it all shes a true keeping kind. Just to make the good even better she will sell bred to W/C Relentless, top selling bull in 2016 at Werning's of South Dakota. Sells with a 1/7/17 bull calf by CLO LTS Entourage 72T. OCV, BVD-PI negative, certified and accredited herd. Homozygous black and homozygous polled.

- Will be Bred AI to W/C Relentless, ASA#3045559

1A 1/7/17 • Bull • BW: 93 • Tattoo: 70E

Sire: CLO LTS Encourage 72T, ASA#2392811

- consignor: CLO Simmentals



CLO American Maiden 70Z

2

SVJ DSC Sheza Dandy W71

Flush & 2 Sets of Embryos • 2528182

GWS Ebony's Trademark 6N

WLE Power Stroke
 NJC Ebony Antoinette
 Hart Black Oasis F301
 JBH Sheza Dandy

War Sheza Dandy M751

2A TLLC One Eyed Jack Proj EPDs

CE	BW	WW	YW	MCE	MILK	MWW	MARB	REA	API
8	2.4	60	82	1	15	45	0.11	0.94	105

2B SVF Steel Force S701 Proj EPDs

CE	BW	WW	YW	MCE	MILK	MWW	MARB	REA	API
10	2.4	63	89	2	11	42	-0.01	0.9	101

- 2C • Selling a flush to the bull of your choice. Guaranteeing eight transferable embryo's with a spit of all eggs over ten. Buyer is responsible for semen and all flush costs.
- Selling 3 embryos by One Eyed Jack guaranteeing 1 pregnancy and 3 embryos by Steel Force guaranteeing 1 pregnancy if work is performed by a certified embryologist.
 - SVJ DSC Sheza Dandy W71 one of the most popular genetics in the Simmental breed. This baldie has done it all, in the show ring and in her offspring. W71 was division champion at the American Royal, and Reserve Grand Champion at Ohio State fair, and Reserve Division Champion in Denver. Her genetics topped the Ante Up sale at \$50,000 and the Sunset View sold \$144,000 of progeny out of Sheza Dandy genetics. Cliff Orley sold CLO Shania 174S for \$45,000 at the North American sale. Most recently a daughter of W71 was fifth overall of all breeds at the VCCP Jackpot show in Virginia.
 - **consignor:** SVJ Farm



SVF DSC Sheza Dandy W71 - reference dam



TLLC One Eyed Jack - reference sire



SVF Steel Force S701 - reference sire

3

SVJ Pretty One D16

3/8/16 • 3215231 • D16 • 78

TLLC One Eyed Jack

Long's Shear Pleasure
 Long's Miss Sweet Treat
 HC Power Drive 88H
 War Sheza Dandy M751

SVJ DSC Sheza Fancy Lady

Purebred

CE	BW	WW	YW	MCE	MILK	MWW	MARB	REA	API
7	2.4	57	85	2	17	46	0.11	0.95	105

- Pretty One sure describes her. This full baldie has the look of a show heifer and future brood cow. She has a great personality for a young junior, very easy to work with and enjoys people and other breeders. Sired by One Eyed Jack put a complete genetic package together. Don't Miss her on sale day!
- **consignor:** SVJ Farm



SVJ Pretty One D16

Welcome to 10th Annual

Stars & Stripes in Gettysburg, Pennsylvania. This group of Simmental breeders have a long standing tradition of producing and marketing exceptional genetics, and making them available to buyers. Several of the members of this sale have been involved in this sale since its inception, and will continue to be for years to come.

Though the group might be small in total herd numbers, that does not stop the high quality genetics that are offered at the Stars and Stripes. There are notable cow families, and genetics have gone to operations across the United States with much success. Last year Mast Simmentals selected a top donor prospect, and sold the calf that sold on her side for \$13,000 at the Ohio Beef Expo. SSC Shell Shocked was the high selling bull last year, and is making a name for himself as a leading herd sire.

This is definitely a sale that is a great family friendly event. The tour on Friday is the better than any history lesson you will receive out of a book, and the hospitality from the group is always great. We invite you and your family to take the trip to Gettysburg to be with us. If you can't be with us, we will be utilizing DV Auction, and will have trucking available for your purchases. The group of consignors are always proud of their offering, so do not hesitate to contact them with any questions you might. We hope to celebrate the 10th annual Stars and Stripes Sale with you the first Saturday in May.



Doug & Debbie Parke 859.421.6100
 Drew & Holli Hatmaker 423.506.8844
 153 Bourbon Hills • Paris KY 40361
 859.987.5758 • e-mail: office@dpsalesllc.com
 www.dpsalesllc.com

Doug Parke



4

HPF Ms Queen U184

9/3/08 • 2476825 • U184 • 83

GWS Ebonys Trademark 6N

WLE Power Stroke
NJC Ebony Antoinette
PVF-BF BF26 Black Joker
Sheza A Dandy Too H598

BCS Queen Of Hearts

Purebred

CE	BW	WW	YW	MCE	MILK	MWW	MARB	REA	API
7	2.3	62	82	4	21	52	-0.05	0.93	100

- HPF Queen of Hearts U184 is a Trademark daughter that has longevity and production bred in. Combining cow families such as Antoinette, Queen of Hearts, Sheza Dandy, and now Ford RJ Dolly thru her baldie Classified heifer calf at side, guarantee profit for many years to come. Yet one more high quality cow we are offering that is nursing a coupon that will probably command more in the fall than the hammer price for the pair on May 6th. Be sure not to be sitting on your hands come sale time and let these rare opportunities pass on by.

4A

3/11/17 • Heifer • BW: 64 • Tattoo: E074

Sire: TKCC Classified 106C, ASA#3028710

- consignor: Hudson Pines Farm

5

MVS Mr. Maximus C12

9/19/15 • 3043380 • C12 • 84

MVS Maximus

SRS Fortune 500
Shoemakers Miss Emma
Ellingson Legacy M229
CLO Shasta 129S

CLO Olivia 29SY

Purebred Bull

CE	BW	WW	YW	MCE	MILK	MWW	MARB	REA	API
13	0.4	67	104	11	22	56	0.18	0.78	136

- Purebred bull. This moderate framed, big footed, good natured young bull reminds us very much of his father at the same age which means a bright, productive and long-term future as someone's herd sire. Maximus, the 2009 National Grand Champion, is still very much with us and producing great calves at ten years of age. This bull's Maternal Grand Sire is Ellingson Legacy M229. His EPD's rank in the top 12% for calving ease and the top 20% for Birth Weight, All Purpose Index and Terminal Index. Actual birth weight was 83 pounds. Adjusted weaning and yearling weights were 854 and 1,290 pounds respectively. Virgin bull. He is semen tested and Vet proven breeding sound. Tested negative for BVD/PI. Conceived, born and raised on this farm under BQA standards.

- consignor: Mountain View Farm





HPF Sazerac D077



CLRWTR Sazerac W94B - ref dam



W/C Executive Order - ref sire



CLCC Victoria W02 - reference dam

6

HPF Sazerac D077

9/2/16 • 3219001 • D077 • 82

JF Back In Black 406B

CLRWTR Sazerac W94B

STF Royal Affair Z44M
Zeis PCGF Perfection
SVF Steel Force S701
Myers Queen Sazerac P94

Purebred

CE	BW	WW	YW	MCE	MILK	MWW	MARB	REA	API
6	1.9	55	77	5	15	43	0.15	0.72	104

D077 is an up-headed, long skinny necked, well balanced female that moves out free and comfortably. She exhibits ample rib shape and depth and will be extremely enjoyable to show both as an open and a bred senior yearling. Sazerac W94B continues to stamp out style and eye-appeal time after time and there's no question about this family's ability to generate dollars once in production.

• **consignor:** Hudson Pines Farm

7

CLCC Victoria W02 x W/C Executive Order

3 Embryos Guaranteeing 1 Pregnancy

W/C Executive Order 8543B

W/C United 956Y
Miss Werning KP 8543U
GWS Ebony's Trademark 6N
Myers Queen Sazerac P94

CLCC Victoria W02

CE	BW	WW	YW	MCE	MILK	MWW	MARB	REA	API
11	-0.9	62	89	6	20	51	0.33	0.92	119

- Selling 3 embryos guaranteeing 1 pregnancy if work is performed by a certified embryologist.
- CLCC Victoria W02 "Brightie" is a beautifully made daughter of GWS Ebony's Trademark, out of the breed great Queen Sazerac. She produces powerful, feminine daughters and impressive sons with her pretty blaze face and perfect disposition. Executive Order needs no introduction – being one of the hottest bulls in the breed right now. These embryos will combine some of the very best maternal power in the Simmental breed Queen Sazerac and Miss Werning KP 8543U an amazing genetic opportunity!!!
- consignor:** Powell's Valley Simmentals



HPF/JF Victoria D091

8

HPF/JF Victoria D091

10/2/16 • 3223592 • D091 • 81

WBF Significant B132

GW-WBF Substance 820Y

WBF Hebe X376

CLCC Victoria W02

GWS Ebonys Trademark 6N

Myers Queen Sazerac P94

Purebred

CE	BW	WW	YW	MCE	MILK	MWW	MARB	REA	API
9	2.1	69	102	6	24	58	0.34	0.95	131

- Although one of the youngest heifers offered in the sale, this little girl is already exhibiting the femininity, growth, and power expected from this mating. I purchased her and her dam at the Hudson Pines Living Legacy Sale sight unseen and was impressed when I saw Victoria for the first time. Her thickness, rib shape, and very feminine front end are the perfect combination to make a great show heifer that will have a long, productive life in your pasture. Juniors, take Victoria to Eastern Regionals this summer, and have another year to show her! BVD-PD negative, homozygous black and homozygous polled.

- consignor:** Powell's Valley Simmentals



Myers Queen Sazerac P94 - reference dam

9

HPF Sassy C408

9/5/15 • 3054426 • C408 • 76

LLSF Uprising Z925

Heads Up 20X ET

LLSF Untouchable U925

Myers Queen Sazerac P94

Meyer Ranch 734

Myerstravelingqueen M212

5/8 Blood

CE	BW	WW	YW	MCE	MILK	MWW	MARB	REA	API
2	2.9	68	95	0	21	55	0.15	0.62	76

- Don't mind just a little extra chrome on C408, she is built as good as you would want and has money making potential bred into her for generations. This heifer offers a shot more growth, a striking silhouette, and running gear that will last for a long, long time. C408 has numerous older sisters who have went on to become leading donors in some very prestigious programs. The marketing is already done for the new owner thru the cow family on this one and due up early to the National Champion Grand Fortune, return on investment is right around the corner.

- Bred AI** to TNGI Grand Fortune Z467, ASA#2654876 on 11/22/16

- consignor:** Hudson Pines Farm



CMFM Sazerac 86Y

CMFM Sazerac 86Y daughter - reference



10

CMFM Sazerac 86Y

11/4/11 • 2633636 • 86Y • 64

JF Milestone 999W

TNT Top Gun R244

Ms Maxie Lou M112S

Myers Queen Sazerac P94

Meyer Ranch 734

Myerstravelingqueen M212

3/4 Blood

CE	BW	WW	YW	MCE	MILK	MWW	MARB	REA	API
2	2.9	70	97	4	19	54	0.1	0.6	95

- This is a cow we had ear-marked early on as one of our "highlight lots" for the Stars & Stripes sale this spring. Unfortunately, 86Y decided to have twin bulls by our young stud Classified, but I promise you, she is a cow that is capable of raising them both to their full potential. A direct Sazerac daughter that we acquired through a "Pick of Circle M's fall calves", 86Y is a 3/4 blood that can produce purebreds with the look and style that is a must for today's market. She has been a little stingy on the heifer calves for us, but the only one we have got out of her was a Living Legacy XI highlight, commanding \$21,000 and now residing in the donor pen for RS&T. Don't overlook this cow, huge amounts of untapped potential in this pedigree and it wouldn't surprise me a bit of CMFM Sazerac didn't continue down a winning path like other family members. We always have committed some of our best to this elite sale and this year is no different. The Milestone cows are some of the best. Be In Gettysburg or give someone a call.

10A 3/9/17 • Bull • BW: 60 • Tattoo: E071
Sire: TKCC Classified, ASA#2536539

10B 3/9/17 • Bull • BW: 65 • Tattoo: E072
Sire: TKCC Classified, ASA#2536539

- consignor:** Hudson Pines Farm



DRD Miss Tizzie - reference dam



W/C Relentless - reference



SSC Victorias Secret - reference dam



LLSF Pays To Believe - reference sire



Hook's Broadway 11B - reference sire



Mr CCF 20-20 - reference sire

11 DRD Miss Tizzie x W/C Relentless 32C

3 Embryos Guaranteeing 1 Pregnancy

W/C Relentless 32C

DRD Miss Tizzie

- Yardley Utah Y361
- Miss Werning KP 8543U
- Mr NLC Upgradde U8676
- Lazy H Shez too Cool W58

Proj EPDs

CE	BW	WW	YW	MCE	MILK	MWW	MARB	REA	API
11	1.8	66	95	7	16	49	0.27	1.08	126

- Selling 3 conventional embryos by W/C Relentless whose dam is the famed 8543 cow at Werning's of South Dakota 8543 cow at Werning's of South Dakota. 8543 has produced numerous big name herdsires across North American. Guaranteeing 1 pregnancy by certified embryologist.
- That's Right Tizzie is a maternal sister to Shell Shocked, Victoria's Secret, (top sellers at Stars & stripes 2016 at \$17,250 and \$3,700) as well as cool Butt & Shez Money all high sellers at Stars & Stripes. One of the reasons that Tizzie came to be a donor at CLO Simmentals is about cow families...she traces back maternally to JBH Sheza Dandi. That cows would also be the dam of WAR Diva M704. This cow family has been described as bulletproof. Think about it, how many times have you looked at an animal and pedigree that you like and they traces to this family! There is power in this blood. Tizzie blends the maternal power of her cow family with the massive sire power of Upgrade, her picture speaks volumes of structure, mass, capacity, maternal milk, and soundness. Like her relatives eh can be mated numerous ways with superior results.
- consignor:** CLO Simmentals

12
A,B,C

SSC Victorias Secret 49B Embryos

3 Embryos Guaranteeing 1 Pregnancy

- GWS Ebonys Trademark 6N
- Remington Secret Weapon 185
- Aubreys Blackclaze II 5T
- CNS Dream On L186
- SS/Rew Too Cool S365
- Lazy H Shez Too Cool W58

LLSF Pay To Believe ZU194 Proj EPDs

CE	BW	WW	YW	MCE	MILK	MWW	MARB	REA	API
9	1.6	61	83	7	16	46	0.24	0.85	124

Hook's Broadway 11B Proj EPDs

CE	BW	WW	YW	MCE	MILK	MWW	MARB	REA	API
5	2.7	64	90	8	20	52	0.22	0.99	121

Mr CCF 20-20 Proj EPDs

CE	BW	WW	YW	MCE	MILK	MWW	MARB	REA	API
11	1.6	64	88	8	17	49	0.05	0.87	114

- Selling 3 embryos guaranteeing 1 pregnancy from LLSF Pays To Believe, Hook's Broadway 11B or Mr CCF 20-20.
- We have been a buyer at the Stars and Stripes over the years however last year we got attracted even more are receiving the catalog. We decided to advance our program and add a donor. The problem was that many other good breeders were thinking the same. After the gavel fell in Gettysburg Victoria Secret commanded \$37,000 and her full brother commanded \$17,250. The calf at her side Secret Society, we sold at the Ohio Beef Expo and was selected by Kody Sasser for \$13,000. This extended cow family is real and will continue to flourish. We want to thank Tom and the rest of the consignor for allowing us to market choice of embryos in this sale. Selling choice of three embryos by Pays To Believe, Broadway, (sexed heifer) and 20/20 (sexed heifer). This is the combination of the cow families of Sheza Dandy and Black Blaze with these proven sires. **consignor:** Mast Simmentals



Full sib to D074- reference



GFI Candace G51 - reference

13

HPF Candace D074

9/4/16 • 3218998 • D074 • 70

S A V Brilliance 8077

S A V Bismarck 5682
S A V Blackcap May 5270
STF Dominance T171
GFI Candace G51

Ms Candace HR/RR W2736

SimAngus

CE	BW	WW	YW	MCE	MILK	MWW	MARB	REA	API
13	0	55	85	9	27	54	0.41	0.55	133

- Here's a heifer that we believe can handle some big time competition. We love the Brilliance cattle for their form and function and the phenomenal cows they mature into. Candace W2736 contributed a shot of growth, power, and neck extension and Brilliance kicked in the structure, rib, and do-ability to create what we believe is the ideal 1/2 blood female. And this is not the first good one to W2736's record, D074 is a maternal sister to the \$20,000 Mack daughter from The Living Legacy XI to the Boyd family. That heifer was a crowd favorite everywhere she went and we're confident Candace D074 will be as well.

• **consignor:** Hudson Pines Farm

14

SSC Pays 2 B Beautiful

9/5/16 • Pending • 95D

LLSF Pays To Believe ZU194

CNS Pays To Dream T759
LLSF Urababydoll U194
SVF/NJC Built Right N48
MF Miss Crossfire R253

MF Miss Built Right U553

Purebred

CE	BW	WW	YW	MCE	MILK	MWW	MARB	REA	API
8	2.3	64	91	6	17	49	0.26	0.69	120

- This young show stopper/donor prospect is sure to get it done in the showing and your donor pen. With P2B on the top side and Beauty on the bottom side she's a can't miss. It was just a couple of years ago that Beauty's daughter dominated the showing and topped this sale at \$14,000 selling to David and Jordan Carter of NC. Here is the next in that line and she is sure to write her own chapter. She is phenotypically exactly what we were hoping for when we did this mating. Completes the best way to describe her. The way she ties everything



SSC Pays 2 B Beautiful

MF Miss Built Right U553
- reference dam



together from her beautiful front end back into her big sweeping rib cage and her tremendous hip. You can't put one together any better than this. Everyone that has seen her this spring has said, Wow, what is she and what are you going to do with her? She has been a favorite this spring and will continue to be a favorite for years to come. She's better than her picture. Come, check her out and see for yourself, you'll be glad you did. It will Pay 2 B here sale day!!

- **consignor:** Greg Stewart

15 JEH Miss Cool Blaze D918

9/18/16 • 3236244 • D918 • 76

SSC Shell Shocked 44B

JEH Miss Red Ace Z213

Remingtonsecretweapon185
Lazy H Shez Too Cool W58
Wheatland Red Ace 747T
JEH Unique 119U

Purebred

CE	BW	WW	YW	MCE	MILK	MWW	MARB	REA	API
10	1.9	59	78	10	18	48	0.01	0.61	107

• This black blazed face fall heifer is built to follow the path of her sire. Why along with her sister were the top selling bull and heifer in the history of the Stars & Stripes. Don't miss out on the opportunity to take her home.

• **consignor:** JEH Simmentals



SSC Shell Shocked 44B - reference sire

16 ESS Darla DYT15

4/5/16 • 3118854 • DYT15 • 91

ESS Zennor Z27

ESS Yooahoo YT15

STF Dominance T171
Bramlets Diamond
Remington Red Label HR
ESS Tanya T15

Purebred

CE	BW	WW	YW	MCE	MILK	MWW	MARB	REA	API
7	4.2	64	88	7	16	48	0.03	0.54	105

• Make this one home and she's ready to head to the show ring, after that put her in the front pasture with the rest of the brood cows. She is good structured, long necked, with just the right muscle shape to play in the show ring. Stands on a perfect foot with a big middle. She is halter broke and always eager to please. PI and BVD free.

• **consignor:** Elm Side Farm



ESS Darla DYT15

17 ESS Daiquiri DAX7

1/11/16 • 3118822 • DAX7 • 84

GLS New Direction X184

ESS Aubrie AX7

HSF Better Than Ever
GLS N6
STF Dominance T171
ESS Xylo X7

Purebred

CE	BW	WW	YW	MCE	MILK	MWW	MARB	REA	API
6	1.3	51	73	6	17	42	-0.05	0.6	96

• Daiquiri is another New Direction daughter that I really like. He has consistently given me cattle like this heifer and Chrome (Lot 50). DAX7 is pretty fronted, big middled and structurally correct. Heterozygous Black. BVD-PI Neg.

• **Bred AI** to Shell Shocked, ASA#2880060 on 3/6/17

• **consignor:** Simme Valley Ranch



ESS Aubrie AX7 - reference dam



MVS Deidra D1

18

MVS Deidra D1

1/9/16 • 3094766 • D1 • 71

GW Premium Beef 021TS

MVS Ariana

G A R US Premium Beef
GW Miss Lucky Charm 410P
MVS Maximus
PVSM All Beef Patty

3/4 Blood

CE	BW	WW	YW	MCE	MILK	MWW	MARB	REA	API
15	-0.8	57	93	10	22	51	0.37	0.66	139

• 3/4 Simmental - 1/4 Angus bred heifer. Like our C16 and D2 bred heifers in this sale, here is another great GW Premium Beef heifer. Maternal Grand Sire is MVS Maximus. Actual birth weight was 72 pounds. She carries a top 5 percent ranking for Calving Ease and top 12 percent ranking for Birth Weight and All Purpose Index on ASA's Spring, 2017 EPD index. A/I bred on 9 April, 2017 to the high selling bull in this sale last year, the up and coming SSC Shell Shocked 44B (ASA #2880060) for a mid-January 2018 calf. No pasture exposure to bulls. Deidra tested negative for BVD/PI and was conceived, born and raised on this farm under BQA standards.

- **Bred AI** to Shell Shocked, ASA#2880060 on 4/9/17
- **consignor:** Mountain View Farm



Simme Valley Dove

19

Simme Valley Dove

1/31/16 • 3099278 • S9D • 96

CSCX Bandwagon 513A

Simme Valley Snickers

TJSC Optimus Prime 12W
KLS Diamond W516
Simme Valley Macho As U
Simme Valley Nestles

Purebred

CE	BW	WW	YW	MCE	MILK	MWW	MARB	REA	API
6	3.2	58	81	6	15	44	0.06	0.57	103

• We all strive for that wedged shaped heifer. Well, that is the best way to describe Dove. She is tight throated, flat shouldered, with an explosive rib, top and rear quarter. She turned a few judges eye last year, with one judge using her for Supreme Champion. Juniors get your Mom & Dad to check her out for your next show heifer. BVD-PI Neg.

- **Bred AI** to W/C Executive Order, ASA#2900283
- **consignor:** Simme Valley Ranch

20

MVS Daphne D2

1/31/16 • 3094765 • D2 • 67

GW Premium Beef 021TS

GAR US Premium Beef
GW Miss Lucky Charm 410P

MVS Autumn X17

MVS Maximus
MVS Miss Blaze

3/4 Blood

CE	BW	WW	YW	MCE	MILK	MWW	MARB	REA	API
16	-1.2	56	93	10	20	48	0.33	0.59	135

• 3/4 Simmental - 1/4 Angus bred heifer. Paternal half-sister to our C16 and D1 heifers also in this sale. Maternal Grand Sire is MVS Maximus. Actual birth weight was 68 pounds. Spring 2017 EPD's rank in the top 5% for Calving Ease and Birth Weight and top 20% for All Purpose Index. A/I bred on 9 April, 2017 to the high selling bull in this sale last year, the up and coming SSC Shell Shocked 44B (ASA #2880060) for a mid-January, 2018 calf. No pasture exposures to bulls. Daphne tested negative for BVD/PI and was conceived, born and raised on this farm under BQA standards.

- **Bred AI** to Shell Shocked, ASA#2880060 on 4/9/17
- **consignor:** Mountain View Farm



MVS Daphne D2

21

LBF Something Special

2/16/16 • 3195753 • 249D • 86

Hook's Yellowstone 97Y

Hooks Taurus 24T
Hooks Sheyenne 77S

LBF Alexandra

WS Beef Maker R13
LBF BB'S Rosebud

Purebred

CE	BW	WW	YW	MCE	MILK	MWW	MARB	REA	API
12	1.7	71	103	11	27	62	0.34	0.9	145

• LBF Something Special certainly is special with her wide base great top line, smooth shoulder and deep body. She will catch your attention, with her friendly disposition.

- **consignor:** Ladybug Farm



LBF Something Special

22

JEH Miss Milestone D219

2/19/16 • 3234979 • D219 • 80

JF Milestone 999W

TNT Top Gun R244
Ms Maxie Lou M112S

JEH Lulu W101

Wheatland Red Hummer608S
GCF Miss Caliente

Purebred

CE	BW	WW	YW	MCE	MILK	MWW	MARB	REA	API
8	2.8	72	107	5	18	54	-0.03	0.74	109

• This solid red girl offers a complete package. Deep bodied, square hipped, big footed with outstanding pedigree.

- **consignor:** JEH Simmentals



JEH Miss Milestone D219



Full sister to JEH Ivy III - reference

23

JEH Miss Top Grade D220

2/20/16 • 3234980 • D220 • 74

MCM Top Grade 018X

JEH Ivy III

Mr NLC Upgrade U8676
MCM 513R
SS Goldmine L42
JS Country Ivy

Purebred

CE	BW	WW	YW	MCE	MILK	MWW	MARB	REA	API
9	0.7	58	87	8	24	53	0.36	0.98	131

- Born from a consistent cow family, with decades of high producing females.
- consignor:** JEH Simmentals



ESS Date W Destany

24

ESS Date W Destany

3/4/16 • 3118823 • D18 • 86

RGRS SRG Two Step 20Z ET

ESS Zale ZR12

WS A Step Up X27
WLTR Lydia 39U ET
CLO LTS Entourage 72T
ESS Rose R12

Purebred

CE	BW	WW	YW	MCE	MILK	MWW	MARB	REA	API
10	1.6	55	77	9	15	43	0.09	0.61	119

- Take a close look at this 2 Step daughter out of our donor cow ESS ZALE ZR12. A good structured heifer with all the right pieces in all the right places to make a nice cow. Here's one that will put show calves on the ground for you. BVD-PI free.
- consignor:** Elm Side Farm

25

Simme Valley Darlaine

3/4/16 • 3099277 • R29D • 82

Simme Valley Ty

Simme Valey Regal As U

Sand Ranch Hand
Simme Valley Temptress
Simme Valley Macho As U
Simme Valley La De Da

Purebred

CE	BW	WW	YW	MCE	MILK	MWW	MARB	REA	API
12	-1.5	51	80	11	23	48	-0.07	0.7	110

- Darlaine is long bodied, smooth shouldered, and structurally correct, with that touch of white that catches your eye. She comes from a line of cows that have longevity. Her dam has raised 11 calves. Check out this great heifer. BVD-PI Neg.
- Will Be Bred AI** to TNGI Grand Fortune, ASA#2654876
- consignor:** Simme Valley Ranch



Attractions...

Within a ten minute drive of Mountain View Farm is the Eisenhower Farm owned by former U.S. Army General and U.S. President Dwight D. Eisenhower. In addition to his many other activities, Ike maintained a national prize-winning herd of Angus cattle. Although Ike's herd is gone now, the house and barns are maintained as they were when the Eisenhower's lived there and are open to tours by the public.

26

CWSF Dallas D6

3/7/16 • 3223396 • D6 • 88

TLLC One Eyed Jack

Long's Shear Pleasure
Long's Miss Sweet Treat
MCMF Savannah Power N11
THC Cruzada R342

MCMF Cruzada U95

Purebred

CE	BW	WW	YW	MCE	MILK	MWW	MARB	REA	API
6	2.2	56	81	4	18	47	0.14	0.82	106

• Dallas is sired by the highly regarded popular One Eyed Jack. Her sire really hit the target with this big bodied, bold sprung herd building female. Once again the maternal strength of the Savannah cow family makes it's presence felt here. Rib shape and internal dimension are abundant. The question is with a female that has this much quality and pedigree behind her, what is the next step? Answer is keep it going by breeding her to the sale topping SSC Shell Shocked from the 2016 Stars & Stripes sale. Will sell bred to SSC Shell Shocked OCV, BVD PI Negative Homozygous black and homozygous polled.

- **Bred AI** to SSC Shell Shocked 44B, ASA# 2880060
- **consignor:** Curry Wagner Simmentals



CWSF Dallas D6

27

CWSF Delta D10

3/10/16 • 3223397 • D10 • 91

WLTR Nashville 22A ET

SS/PRS High Voltage 244X
LLSF Cayenne UP401
BF 0K34 Daytona
MCMF Savannah N38

MCMF Midnight W40

Purebred

CE	BW	WW	YW	MCE	MILK	MWW	MARB	REA	API
8	2.2	57	79	6	21	50	-0.03	0.78	104

• Delta is a very nicely constructed useful daughter of the Nashville bull who has been used with success in the Wagner herd. A well balanced female with a lot of top end potential. She has plenty of volume and capacity from end to end. Genetically her EPDs are balanced throughout. Maternally she stems from the highly proven Savannah cow family, one known for quality, capacity and efficiency. Dawn will sell bred to HPF Rockstar (Milestone x Sheza Star X331) which should intensify the quality of her calf. OCV, BVD-PI negative. Homozygous polled and homozygous black.

- **Bred AI** to HPF Rockstar B332, ASA# 2922447
- **consignor:** Curry Wagner Simmentals



CWSF Delta D10

28

CWSF Dawn D14

3/14/16 • 3223398 • D14 • 89

CLO LTS Entourage 72T

CNS Dream On L186
War Diva M704
GW Nebula 008T
MCMF Red Sky Y14

CWSF Areba Ray A14

Purebred

CE	BW	WW	YW	MCE	MILK	MWW	MARB	REA	API
15	0.3	59	82	12	16	46	0.08	0.73	129

• If you like them good and red you are bound to really be attracted to Dawn. Anyway you analyze her she is superior. Genetically she sports a great balanced set of EPDs, from calving ease clear through her API. Her maternal pedigree is an outcross to many bloodlines while her sire contributes proven dependable herd building progeny. Dawn is capacious and sound structured with an excellent set of feet and legs. To add value to an already superior female she will sell bred to HPF Tradecraft, on of the most exciting young sires premiered in Denver this year. OCV, BVD-PI Negative.

- **Bred AI** to HPF Tradecraft, ASA# 3124189
- **consignor:** Curry Wagner Simmentals



CWSF Dawn D14



HPF Tradecraft -
reference AI sire



LBF Chasity's Image

29

LBF Chasity's Image

3/14/16 • 3195743 • 265D • 86

RS&T Homeboy Y108

LBF Chasity's Freedom

WAGR Dream Catcher 03R
STF Sally Jo
THSF Freedom 300N
LBF729S

Purebred

CE	BW	WW	YW	MCE	MILK	MWW	MARB	REA	API
7	2.4	67	98	10	20	54	0.17	0.91	118

• LBF Chasity's Image is a stunning solid red heifer that will catch your eye. She is clean fronted and very feminine while maintaining adequate muscling. She has an API of 122.

• **consignor:** Ladybug Farm



MVS Dawn D3

30

MVS Dawn D3

3/24/16 • 3094767 • D3 • 77

MVS Jack Frost

MVS Dew Drop Y6

Mr NLC Upgrade U8676
MVS Lady Arya
HTP SVF In Dew Time
MVS Callie

Purebred

CE	BW	WW	YW	MCE	MILK	MWW	MARB	REA	API
12	0.8	65	96	10	17	49	0.28	0.87	132

• Purebred, open heifer. A moderate frame heifer with actual birthweight of 76 pounds and adjusted yearling weight of 946 pounds. Her sire is our Mr. NLC Upgrade son now owned and in service with Curry Wagner Simmentals. Dawn ranks in the 25 percent of the ASA Spring 2017 EPD Index for Calving Ease, Birth Weight, All Purpose Index and Terminal Index. Too young to breed prior to this sale, the lucky new owner can take her home and breed her in a couple of months to the bull of your choice. Tested negative for BVD/PI Dawn was conceived, born and raised on this farm under BQA standards. Sells open, no pasture exposures.

• **consignor:** Mountain View Farm



LBF Sweet Thing

31

LBF Sweet Thing

4/9/16 • 3195745 • 271D • 80

Hook's Yellowstone 97Y

LBF What A Girl

Hooks Taurus 24T
Hooks Sheyenne 77S
GWS Ebony's Trademark 6N
LBF My Legacy

Purebred

CE	BW	WW	YW	MCE	MILK	MWW	MARB	REA	API
13	0.4	65	90	6	22	54	0.22	0.79	138

• LBF Sweet Thing is a very stylish complete package with a outstanding pedigree. She has an API of 137.

• **consignor:** Ladybug Farm

32

D&D High Profile D30

4/15/16 • 3215244 • D30 • 78

PCSC Burnin' Fatt Z6

D&D Super Star W30

Flying B Cut Above
 Lazy H Dream Baby Dream
 D&D Tank AQQ
 D&D Miss 2

Purebred

CE	BW	WW	YW	MCE	MILK	MWW	MARB	REA	API
5	3.6	58	85	7	21	50	0.17	0.62	105

• W30's dam is a full sister to D&D high profile who was grand champion female at Ohio State Fair and dam of our D&D High Mark bull used throughout the country. W30 has produced all baldies. The seller at the Pennsylvania fall sale for \$8,000. He has made his mark on our farm. This is they type female you should be buying not selling! Check her out!

• **consignor:** SVJ Farm



D&D High Profile D30

33

CWSF Dixie D25

4/16/16 • 3223399 • D25 • 98

MVS Jack Frost

CWSF Zythire Z6

Mr NLC Upgrade U8676
 MVS Lady Arya
 MCMF Rock Solid U77
 MCMF Blossom S2

Purebred

CE	BW	WW	YW	MCE	MILK	MWW	MARB	REA	API
7	3.2	70	102	9	21	56	0.18	0.87	116

• This female is very stable in her design both phenotypically and genetically. Dixie is sound structured and very balanced in her profile. She excels in her growth numbers and should make a very pleasing replacement quality female. On her maternal side she traces back to the Blossom cow family that originated at the Wesner's in Indiana. Her sire has done a nice job of producing solid foundation quality cattle at both Wagner's and Mountain View Simmentals. Sells open. OCV, BVD-PI negative.

• **consignor:** Curry Wagner Simmentals



CWSF Dixie D25

34

SVJ Lindsey D47

4/26/16 • 3215236 • D47 • 75

PCSC Burnin' Fatt Z6

SVJ Majic Lady

Flying B Cut Above
 Lazy H Dream Baby Dream
 Triple C Majic Man M211
 SVJ Stylish One

Purebred

CE	BW	WW	YW	MCE	MILK	MWW	MARB	REA	API
10	2.3	57	89	7	20	49	0.04	0.77	116

• This special, high performance female has the look and the genetics to compete in the showing. Her dam was Division Champion at both the North American and Denver. Her great granddam S&S Sahara won it all including the North American Junior show. She has that beautiful long neck extension, tremendous hip, and says look at me! We have been very excited about our Burnin' Fatt calves. They come small and grow with great performance. This is a rate find to get so much quality in one package!

• **consignor:** SVJ Farm



SVJ Lindsey D47



Attractions...

Mountain View Farm is located in the antique capital of the nation centered in Adams and Lancaster counties. The nearby Gettysburg Outlet Mall offers shopping at numerous famous brand stores.



LBF Kiss Me Kwik



ACW Ironhide 395Y - AI sire

35

SVJ Antoinette D117

4/28/16 • 3215235 • D117 • 78

SVJ Rogue Z3

SVJ Antoinette A117

BMR Explorer
SVJ Shining Star X3
TJSC Optimus Prime 12W
SVF NJC Ebony S503

Purebred

CE	BW	WW	YW	MCE	MILK	MWW	MARB	REA	API
10	1.4	58	80	4	16	45	0.08	0.65	112

• This special blaze faced female has the look of guts and glory that meets today's high standards. Thanks Sunset View Farm for your great breeding program in Antoinette A17. The Optimus Prime dam and her sister are in our ET program. Having BMR Explorer, Silversmith, and the Burn It Up family on the sire side has been a great match up. This is a special female for the Stars and Stripes sale!

• **consignor:** SVJ Farm

36

LBF Kiss Me Kwik

5/1/16 • 3195756 • 276D • 70

PVF Insight 0129

LBF Lil Darling

SAV Brilliance 8077
PVF Missie 790
CNS Dream On L186
LBF U Darling

SimAngus

CE	BW	WW	YW	MCE	MILK	MWW	MARB	REA	API
14	0.5	62	101	9	28	59	0.36	1.07	137

• LBF Kiss Me Kwik is a solid black SimAngus heifer with Dream On and Leachman 600U in her pedigree. She has a moderate frame, attractive and sound structured, she has much substance, look and quality. This heifer is a complete package with strong genetics.

• **consignor:** Ladybug Farm

37

KBS Nelly 01B

1/25/14 • 3231561 • KB01B •

WBSF Combustion X3Z

CLRWTR Nelly T050

SVF/NJC Built Right N48
SVJ Light Me Up
Triplec El Poderoso Rey
SS Nelly

Purebred

CE	BW	WW	YW	MCE	MILK	MWW	MARB	REA	API
9	1.2	59	88	7	22	51	0	0.82	108

• Nelly is a beautiful made female that is moderate frame, huge middled, and very sound from the ground up. Her dam, CLR WTR Nelly has done a great job for our programs stamping females that will make money for years to come. Bred to Ironhide for a early calf.

• **Bred AI** to ACW ironhide 395Y, ASA#2624126 on 3/20/17

• **consignor:** Kevin Bishop



Hillcrest Miss Claudia

38

Hillcrest Miss Claudia

2/10/15 • 2996654 • HC4 • 92

Flying B Cut Above

HPF Ms Jettop T098

FB Prime Cut 456L
Dillons Ms Pretty Woman
GWS Ebonys Trademark 6N
Miss Jettop 164H

Purebred

CE	BW	WW	YW	MCE	MILK	MWW	MARB	REA	API
8	3	64	91	5	15	47	0.01	0.61	106

• This Flying B Cut Above _Fat Butt_ daughter is a big footed, deep bodied heifer with overall eye appeal and a great disposition. Hillcrest Miss Claudia was a many time champion for a 4H junior this past show season, including Calf Champion at the Eastern States Exposition in 2015. She has really matured into a broody, mature, and maternal type female. AI bred to the calving ease bull GCF Mr. Amigo, this matting will increase API to 115 and DOC above average to 13.85. Safe in calf, due 6/18. Hillcrest Farm is BQA Certified and BVD Negative.

- **Bred AI** to GCF Mr Amigo, ASA#2360021 on 9/7/16
- **consignor:** Hillcrest Farm

39

HPF Right 2 Luv C405

9/1/15 • 3054424 • C405 • 60

W/C BF Innocent Man

RP/MP Right To Love 015U

W/C No Remorse 763Y
Miss Werning 174Y
SVF/NJC Built Right N48
PCC Queens Valentine R9

3/4 Blood

CE	BW	WW	YW	MCE	MILK	MWW	MARB	REA	API
11	0.3	47	64	9	26	49	0.18	0.34	108

• Here's one we agreed early on would never leave the farm. With 015U not getting any younger and becoming somewhat inconsistent in embryo production, it's probably not a smart idea to let one of the few daughters we still have leave the farm. The list of winners and sale toppers that 015U could compile would easily take up the page and C405 will be your next opportunity to take advantage of what we consider to be the most consistent producing donors we have ever worked with. 015U just doesn't miss and her daughters are proving to be the same. Due early with what should be a baldie heifer calf, C405 is ready to go to work for you.

- **Bred AI** to HPF Optimizer A512, ASA#2728015 (sexed heifer semen) on 11/22/16
- **consignor:** Hudson Pines Farm



RP/MP Right To Love 015U - reference dam



40

PVSM Crown Jewel

9/2/15 • 3140366 • C20 • 80

STF Royal Affair Z44M

Remington Lock N Load54U

STF Onyx 451W

PVSM September Bug

BMR Explorer

PVSM June X1

3/4 Blood

CE	BW	WW	YW	MCE	MILK	MWW	MARB	REA	API
8	2.2	50	79	3	14	39	0.12	0.52	98

• This Royal Affair heifer is a difficult one to let go -- she is out of a maternal sister to our donor June Bug. I can't say enough about the quality and longevity of this cow family, and adding Royal Affair only sweetens the genetic package. Jewel is a sound, smooth made heifer that will follow in the footsteps of her 16 year old granddam that is still going strong. PVSM Crown Jewel is A.I. bred to CAJS Blaze of Glory, and is due 9-11-17. BVD-PI negative, homozygous black and homozygous polled.

- **Bred AI** to CAJS Blaze of Glory, ASA#2939840 on 11/28/16
- **consignor:** Powell's Valley Simmentals



PVSM Crown Jewel

41

PVSM Black Widow

9/3/15 • 3140359 • C21 • 73

GWS Ebonys Trademark 6N

WLE Power Stroke

NJC Ebony Antoinette

PVSM Spider

Hooks Shear Force 38K

PVSM June Bug

Purebred

CE	BW	WW	YW	MCE	MILK	MWW	MARB	REA	API
15	-0.4	55	73	5	20	48	0.22	0.98	128

• Black Widow is a moderately framed, easy keeping, sound moving heifer with a beautiful front end. "She is a granddaughter of our June Bug donor cow, and has no Dream On in her pedigree, opening up a multitude of mating options. Don't let Black Widow's name fool you -- she is as sweet as they come, and has been shown. "In fact, she would be fun to show at this year's Eastern Regionals in Ohio. PVSM Black Widow is AI bred to CAJS Blaze of Glory and is due 9-1-17. "BVD-PI negative, homozygous polled and heterozygous black.

- **Bred AI** to Blaze of Glory, ASA#2939840 on 11/28/16
- **consignor:** Powell's Valley Simmentals



PVSM Black Widow

42

HPF/Bornetemptation C084

9/3/15 • 3054466 • C084 • 73

HPF/CMFMHeartbreakerZ323

JF Milestone 999W

PCC Queens Valentine R9

HPF Temptation Y348

Clwtr Shock Force W94C

STF Temptation R79M

Purebred

CE	BW	WW	YW	MCE	MILK	MWW	MARB	REA	API
7	1.8	67	95	6	16	50	0.19	0.49	119

• Every year we get phone calls looking for some fall bred heifers so we decided to hold a few really good ones back specifically for this sale. C084 is the natural calf out of our favorite red donor, HPF Temptation Y348, who was Grand Champion Female at the 2012 Simmental Breeders Sweepstakes and has been a no-miss donor for producing maternally built, sound structured, eye appealing cattle and she strikes again with C084. This female bundles Sazerac, Valentine, and Temptation into one potent pedigree! AI bred up early to the popular Bill Fulton/Bird/Werning calving ease specialist, Innocent Man.

- **Bred AI** to W/C BF Innocent Man 174A, ASA#2785174 on 11/22/16
- **consignor:** Hudson Pines Farm



HPF Temptation Y348 - reference dam



43

MVS Miss Cherry C13

10/7/15 • 3043375 • C13 • 80

MVS Maximus

SRS Fortune 500
Shoemakers Miss Emma

MVS Miss Blaze

GW Lucky Break 047G
LLL Ms Red Caddy

Purebred

CE	BW	WW	YW	MCE	MILK	MWW	MARB	REA	API
10	1.5	57	85	11	22	50	0.12	0.52	120

• One of a very few red MVS Maximus calves, Cherry continues the excellent production and performance of the Maximus line as exemplified by the two black bred heifers purchased in last year's sale by Steve and Barb Lucariello. She is A/I bred to the red bull GW Redestined 642X (ASA # 2566964) for a 22 September, 2017 calf with excellent projected EPD's to include a top 5 percent ranking for All Purpose Index (146) and Terminal Index (79.9). No pasture exposures to bulls. Cherry tested negative for BVD/PI and is safe in calf. She was conceived, born and raised on this farm under BQA standards.

- **Bred AI** to GW Redestined 642X, ASA#2566964 on 12/14/16
- **consignor:** Mountain View Farm



MVS Miss Chery C13

44

LBF Legacys Surprise

10/10/15 • 3122054 • 233C • 82

STF Royal Affair Z44M

Remington Lock N Load54U
STF Onyx 451W

LBF My Legacy

Nichols Legacy G151
LBF Tonis Tigress

Purebred

CE	BW	WW	YW	MCE	MILK	MWW	MARB	REA	API
9	1.2	53	77	8	20	47	0.13	0.66	118

• LBF Legacys Surprise is a fall bred homozygous heifer sired by Royal Affair. She combines performance, pedigree and style in a complete packages. She has depth thickness and muscle without losing femininity. She is bred to Hooks Yellowstone for an October calf. She has an API of 115.

- **Bred AI** to Hooks Yellowstone 97Y, ASA#2612546 on 12/6/16
- **consignor:** Ladybug Farm



LBF Legacys Surprise

45

LBF Upgrade 235C

10/29/15 • 3159409 • 235C • 90

Mr NLC Upgrade U8676

Ellingson Legacy M229
Ms NLC Mojo S6119 B
Mr Ishee Precision Red

LBF Ms Precision

LBF Kendra

Purebred

CE	BW	WW	YW	MCE	MILK	MWW	MARB	REA	API
4	4.8	84	125	3	17	59	0.13	1.03	109

• LBF Upgrade 235C is a moderate framed blazed face black Upgrade daughter. She has the thickness, depth and capacity to make an excellent easy keeping cow. Just like her dam who produces a great calve every year. She is bred to Hooks Yellowstone to calve mid September.

- **Bred AI** to Hooks Yellowstone 97Y, ASA#2612546 on 12/6/16
- **consignor:** Ladybug Farm



LBF Upgrade 235C



46

MVS Carly C16

11/2/15 • 3043378 • C16 • 79

GW Premium Beef 021TS

GAR US Premium Beef
GW Miss Lucky Charm 410P

PVSM All Beef Patty

SRS J914 Preferred Beef
B&B Miss Edge L24

3/4 Blood

CE	BW	WW	YW	MCE	MILK	MWW	MARB	REA	API
14	0.4	59	97	10	23	53	0.38	0.67	137

• This 3/4 Simmental - 1/4 Angus bred heifer strikes an impressive pose and is put together quite nicely. Sired by the popular Gateway Simmentals bull Premium Beef 021TS she carries exceptional traits which we have found in all of his calves. Carly ranks in the top 10 percent of the spring 2017 EPDs for Calving Ease and the top 20 percent for Birth Weight and All Purpose Index. We A/I bred her to SVF/NJC Built Right N48 (ASA # 2225381) with calf due on 22 September, 2017. Resulting calf has projected EPDs of 14.5 for Calving Ease, 0.7 for Birth Weight and 133.7 for All Purpose Index. No pasture exposures to bulls. Carly has tested negative for BVD/PI and is safe in calf. She was conceived, born and raised on this farm under BQA standards.

- **Bred AI** to SVF/NJC Built Right N48, ASA#2225381 on 12/14/16. Due 9/22/17
- **consignor:** Mountain View Farm

47

ESS Delilah DX7

1/8/16 • 3118860 • DX7 • 91

GCF Mr Amigo

CNS Dream On L186
GCF Miss Mt-Zel

ESS Xylo X7

Remington Red Label HR
Pond View Miss Red Top

Purebred

CE	BW	WW	YW	MCE	MILK	MWW	MARB	REA	API
8	2.2	65	84	7	7	40	0.02	0.79	112

• DX7 has been our favorite red heifer since day 1. When you study this girl she's not only long bodied, but she is rugged in her make up, huge boned and heavy muscled, all set on a big foot and good structure. Halter broke, tested BVD, PI free

- **Bred AI** to Shell Shocked, ASA#2880060 on 3/6/17
- **consignor:** Elm Side Farm

48

CLO Dove 10D

3/24/16 • 3160490 • 10D • 78

CLO LTS Entourage 72T

CNS Dream On L186
War Diva M704

BV Macho Mama 10U

3C Macho M450 BZ
Swain Penny 426P

Purebred

CE	BW	WW	YW	MCE	MILK	MWW	MARB	REA	API
9	2.9	67	94	13	18	52	0.08	0.75	120

• Dove represents proven genetics that have been tested over time and they work! A very useful well designed female with a pleasing balanced set of EPDs. She is sound and functional from the ground up. Dove's dam is an alumni of the Stars & stripes sale. This cow has an outstanding design in terms of phenotype and the ability to raise a superior calf year after year and she really milks with a near perfect udder. Dove is the type and kind that will keep you in the cow business for a long time both phenotypically and genetically. OCV, BVD-PI negative. Homozygous black and homozygous polled.

- **Bred AI** to W/C Innocent Man, ASA#3078470 on 3/31/17
- **consignor:** CLO Simmentals



MVS Carly C16



ESS Delilah DX7



CLO Dove 10D



ESS Coral C62

49

ESS Coral C62

2/2/15 • 2978798 • C62 • 93

RGRS SRG Two Step 20Z ET

WS A Step Up X27

WLTR Lydia 39U ET

HPF Ms Desa Rae Y062

CLO LTS Entourage 72T

STF Desa Rae

Purebred

CE	BW	WW	YW	MCE	MILK	MWW	MARB	REA	API
8	2.7	59	84	11	11	40	0.15	0.53	121

- Pedigree says it all, you can take her home and build a cow herd around her. She is good structured and big middled, all wrapped up in an attractive package. With just a little bit of white on her head to set her apart from the crowd, she has a perfect cookie-cutter of Momma New Direction heifer calf at her side. Cow is broke to tie, both PI & BVD free.

- **Bred AI** to CCR Wide Track, ASA#2588250 on 3/31/17

49A

1/16/17 • Heifer • BW: 89 • Tattoo: EC62

Sire: New Direction ASA#2536539

- **consignor:** Elm Side Farm

50

Simme Valley Chrome

1/27/15 • 2960852 • 260C • 110

GLS New Direction X184

HSF Better Than Ever

GLS N6

Simme Valley Anastasia

Clwtr Shock Force W94C

SS Nadine

Purebred

CE	BW	WW	YW	MCE	MILK	MWW	MARB	REA	API
1	3.9	62	94	4	19	50	0.04	0.92	97

- Chrome had a successful show career winning several Grand & Supreme Champions. Despite being "a show heifer", she bred on time and held her condition wintered "in the back forty", un-pampered. She is extremely well balanced, with a bold rib and is fluid on the move. Icing on the cake is her heifer calf on side. Elexa is the pick of my calf crop and is sired by HPF's new bull, TKCC Classified. Notice Chrome's pedigree goes back to my donor cow SS Nadine, out of the Triple Crown Winner "SVF Breath Taker". BVD-PI Neg

50A 1/23/17 • Heifer • BW: 102 • Tattoo: C60E

Sire: TKCC Classified, ASA#3028710

- **consignor:** Simme Valley Ranch



Simme Valley Chrome



ESS Cindy CR12



Attractions...

Immediately adjacent to Mountain View Farm is the "Land of Little Horses" which provides a great miniature horse show for the youngsters.



ESS Clarice CAY15

51

ESS Cindy CR12

2/2/15 • 2978783 • CR12 • 83

RGSR SRG Two Step 20Z ET

ESS Rose R12

WS A Step Up X27
WLTR Lydia 39U ET
Nichols Blk Destiny D12
Harts Black Dream

Purebred

CE	BW	WW	YW	MCE	MILK	MWW	MARB	REA	API
8	1.4	49	67	7	17	42	0.11	0.49	116

• This is the maternal sister to our donor cow Zale, she was sired by the 2 Step bull and check out the the fine Entourage heifer at her side! She's a long-necked, big-middled cow with a nice udder attachment. She's built just right to make some real beauties for her new owners. Both tested BVD-PI free.

• **Bred AI** to CCR Wide Track, ASA#2588250 on 3/24/17

51A 1/27/17 • Heifer • BW: 84 • Tattoo: ECR12

Sire: Entourage, ASA#2392811

• **consignor:** Elm Side Farm

52

Simme Valley Class Act

2/27/15 • 2960857 • 79C • 114

Simme Valley TY

HPF Miss Desa Rae U079

Sand Ranch Hand
Simme Valley Temptress
Ankonian Red Caesar
STF Desa Rae

Purebred

CE	BW	WW	YW	MCE	MILK	MWW	MARB	REA	API
7	3.4	72	111	12	20	55	0.09	0.65	116

• This 2-year old goes back to STF Desa Rae, one of the most popular red cow in our breed. She is super clean fronted, big middled and structurally correct. Check out her solid black heifer calf, sired by THSF Lover Boy, the 2016 Denver Grand Champion Bull. BVD-PI Neg.

• **Bred AI** to LLSF Pays To Believe, ASA#2659897

52A 1/11/17 • Heifer • BW: 94 • Tattoo: C79E

Sire: Lover Boy, ASA#2983443

• **consignor:** Simme Valley Ranch

53

ESS Clarice CAY15

3/29/15 • 2978802 • CAY15 • 96

ESS Zennor Z27

ESS Adele AY15

STF Dominance T171
Bramlets Diamond
WS Beef Maker R13
ESS Youthful Bliss Y15

Purebred

CE	BW	WW	YW	MCE	MILK	MWW	MARB	REA	API
9	4.3	68	95	10	18	53	0.2	0.73	118

• Here's a 2 year old powerful cow that moves out really nice on a big foot. She has a wonderful disposition, a beautiful udder, is halter broke, and with a sweet little Macho as U heifer calf at her side she is the real deal! Be sure to check out this pair. Both tested negative for PI-BVD.

• **Bred AI** to Shell Shocked, ASA#2880060 on 3/18/17

53A 1/11/17 • Heifer • BW: 80 • Tattoo: EC15

Sire: Macho As You, ASA#2178168

• **consignor:** Elm Side Farm

54

HPF Caliente B533

1/1/14 • 2864591 • B533 • 78

Remington Lock N Load54U

Remington On Target 2S
Bar15 Miss Knight78E-51G
Wheatland Bull 468P
GCF Miss Caliente

HPF Caliente U335

Purebred

CE	BW	WW	YW	MCE	MILK	MWW	MARB	REA	API
10	0.7	51	89	6	16	41	-0.02	1.02	108

- Lock N Load semen is hard to find and expensive when you do because of his ability to make daughters like B533. Only a three year old, this beautiful baldie is trim necked, explosive ribbed and elegant on the move. The Caliente cow family is one you can hang your hat on, they have proven themselves at some of the most prestigious programs in the country that they can perform and make the cash flow, no matter the environment they are in.

54A 3/28/17 • Bull • BW: 83 • Tattoo: E077

Sire: TKCC Classified 106C, ASA#3028710

- consignor: Hudson Pines Farm

55

K&P Miss Fancy Pants

1/10/14 • 2833989 • KPB5 •

Flying B Cut Above

FB Prime Cut 456L
Dillons Ms Pretty Woman
STF Mr Momentum H508
D&A Cinderella 1S

PVSM Fairy Tail

Purebred

CE	BW	WW	YW	MCE	MILK	MWW	MARB	REA	API
7	2.6	53	84	10	19	45	0	0.46	106

- Fancy Pants was Grady's first show heifer. She has the best temperament you could ask for and has developed into a beautiful young cow. Fancy pants is a very complete individual with a smooth front end that extends on and on. She has an impressive badly heifer calf at her side that has the same cool look as her mother with great extension up through her front but this little baby doll has that desirable badly face to help grab your attention and the attention of everyone else. On top of all that check out her Dream On free pedigree which leaves you lots of mating possibilities. Here is a young hard working pair that will generate you lots of \$\$\$\$ for years to come. Don't miss out!!

55A 3/16/17 • Heifer • BW: 74 • Tattoo: 36E

Sire: Revival, ASA#2913874

- consignor: Greg Stewart

56

Simme Valley Bonfire

1/21/14 • 2840827 • 9B • 108

STF Dominance T171

STF Dominique R170
MMP Kiss This 37L
Circlet Antoinettes Star
Simme Valley Katinka

Simme Valley Ura Hottie

Purebred

CE	BW	WW	YW	MCE	MILK	MWW	MARB	REA	API
5	4.6	52	71	7	12	38	0.09	0.48	94

- Last year, Bonfire raised our heaviest heifer calf, making her mark in our replacement heifer pen. We have Bonfire's dam and 3 maternal sibs left in the herd. This is a strong cow family that really knows how to work. She has a black blazed face heifer calf on side. BVD-PI Neg

- Bred AI to W/C Executive Order, ASA#2900283

56A 1/20/17 • Heifer • BW: 80 • Tattoo: C9E

- consignor: Simme Valley Ranch



HPF Caliente B533



HPF Caliente U335 - ref. dam



K&P Miss Fancy Pants



Attractions...

Mountain View Farm is located about one hour from Hershey, PA – Chocolate Town USA. Tours of the factory and surrounding attractions are open year around.



DMN Daisy Mae - ref. dam



SSC Pebbles 330Z

57 HPF Daisy Mae A354

4/2/13 • 2730882 • A354 • 74

TJ Sharper Image 809U

DMN Daisy Mae

Dikemans Sure Bet
T J Miss Bando S27
TOF Destiny L15
DMN Black Daisy

5/8 Blood

CE	BW	WW	YW	MCE	MILK	MWW	MARB	REA	API
11	-0.8	64	101	8	23	54	0.1	0.4	115

• We really hope that whoever ends up owning this pair gives A354 a chance in the donor pen. Phenotypically, I don't know if you can draw one any better and to watch this one travel is a true joy. So effortless in motion, deadly when posed, A354 has big time earning potential. Just look at the baldie Classified heifer nursing her now. If that little bombshell can't pay for the pair and then some this fall, I would be shocked. There's no such thing as a risk free investment, but I'd say this is as close as it gets. Both individuals are homozygous polled and homozygous black. Also, don't forget that A354 is a full sister to the high seller and many time champion of Maddy Udell's, SVF Image Z202 and half sister to the Long Ridge donor, HPF Daisy Mae A008.

57A 2/26/17 • Heifer • BW: 67 • Tattoo: E062

Sire: **TKCC Classified 106C**, ASA#3028710

• **consignor:** Hudson Pines Farm

58 SSC Pebbles 330Z

3/30/12 • 2635651 • 330Z • 82

SVF/NJC Built Right N48

HPF Perfection W568

CNS Dream On L186
NJC Ebony Antoinette
Wheatland Bull 131L
CNS Perfection R521

Purebred

CE	BW	WW	YW	MCE	MILK	MWW	MARB	REA	API
12	1.6	61	85	9	16	47	0.01	0.52	114

• Where do you start when writing a footnote about a red baldy female the caliber of Pebbles? She has all the parts that you want when searching for a donor. She has impeccable phenotype all the way from her beautiful bald face back through her pretty front end and big middle, back to her stout hip and all the way down to the big foot that she stands on. Then check her out on paper. She stem from the great Perfection cow family at Hudson Pines who has been a mainstay in their donor battery. Not only is Pebbles a tremendous female in her own right, she has a gorgeous solid black heifer calf at her side. If in the right hands, this little beauty will find the backdrop time and time again. She is a stout hipped cool necked calf with all the right parts that will be sure to get a lot of attention on sale day. Whether you're in the market for a donor or a show heifer to take your program to the next level this is the lot you need to take home on May 6th.

58A 2/9/17 • Heifer • BW: 88 • Tattoo: 29E

Sire: **Yardley High Regard**, ASA#2522822

• **consignor:** Greg Stewart



Haefner

HF Grand Lady 794X

59

HF Grand Lady 794X

2/4/10 • 2535365 • 794X • 89

SS Ebony's Grandmaster

PVF-BF BF26 Black Joker

SOSF Ebony's Joy L-123

SKPattonmlaforeverlady79

BAAR USA Meatmaker 3075

Maple Lane Forever Lady 277

SimAngus

CE	BW	WW	YW	MCE	MILK	MWW	MARB	REA	API
8	0.1	45	66	4	19	41	0.38	0.58	109

- 794X is a big bodied, easy keeping, good footed female that deserves way more of a shot than we have offered her in NY. This is a cow that has taken an embryo almost every year due to our "donor or recip" management style and last year when we saw our first Fast Track calves, we new we had to get more cows bred to him. 9 months later... BOOM... good uddered, sound structured, bold sprung cow nursing a powerfully built, good necked, baldie heifer calf. We love it when a plan comes together.

59A

2/21/17 • Heifer • BW: 84 • Tattoo: E062

Sire: **HPF Fast Track**, ASA#2837087

- **consignor:** Hudson Pines Farm

60

Circle T K205 Priceless

12/8/08 • 2476549 • U042 • 76

SHS Navigator N2B

TCF/RCC Temptation GJ640

Rocky Hills Jo

NJC SVF Antoinette K205

HC Power Drive 88H

NJC TJF Hollye Hunter

Purebred

CE	BW	WW	YW	MCE	MILK	MWW	MARB	REA	API
6	2	62	103	2	19	49	0.07	0.56	106

- K205 Priceless is probably just that. The K205 daughters have been dominant in this breed and you will have to drive the wheels off a vehicle to find one available for purchase, especially one sired by something "outcross" to all of today's popular sires. This is a big middled, easy fleshing, good legged female that is low input and will get the job done. Owned with Bramlet Simmentals

60A 2/14/17 • Bull • BW: 84 • Tattoo: E042

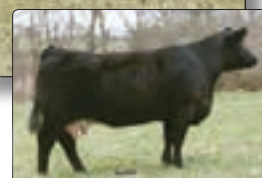
Sire: **TNGL Grand Fortune**, ASA#2654876

- **consignor:** Hudson Pines Farm



Circle T K205 Priceless

NJC SVF Antoinette K205 - ref. dam





GGSF Miss Kay



STF Desa Rae - reference dam



Attractions...

Mountain View Farm is an hour and a half north of, Washington D.C. and Annapolis and Baltimore MD. Take time during your stay here to visit our Nation's Capital and the various museums and galleries there. The Baltimore inner-harbor is a great place to visit and dine-out

61

GGSF Miss Kay

9/12/12 • 2705719 • Z04 • 81

SVF Steel Force S701

Bramlets Pride

- CNS Dream On L186
- SVF Sheza Beauty L901
- TCF/RCC Temptation GJ640
- HPF-GWF Promisemepurple

Purebred

CE	BW	WW	YW	MCE	MILK	MWW	MARB	REA	API
9	1.2	65	104	2	15	47	-0.05	0.86	99

- This Steel Force daughter is a powerhouse of a cow. She is a deep ribbed, big footed, long bodied, stylish cow. She was a successful show heifer winning her classes at shows from Eastern Junior Regionals, Junior Nationals, and Eastern States Exposition. She comes from one of Bramlet's Simmental best donors, Bramlets Pride. We have several daughters of GGSF Kay who are following in her footsteps being powerful, big bodied cows. Her AI service is to Yardley High Regard and has been pastured exposed to the Angus Bull Night Moves. Hillcrest Farm is BQA Herd Certified and BVD-PI Negative.
- **Bred AI** to Yardley High Regard W24, ASA#2522822 on 11/10/16
- **Pasture Exposed** to TF Night Moves, AAA#17534482
- **consignor:** Hillcrest Farm

62

HPF Desa Rae U347

4/24/08 • 2462225 • U347 • 80

Wheatland Bull 468P

STF Desa Rae

- HC Power Drive 88H
- Wheatland Lady 902J
- MV Red Light 406
- ER Miss Redline 42B

Purebred

CE	BW	WW	YW	MCE	MILK	MWW	MARB	REA	API
8	1.6	60	89	9	17	47	0.07	0.62	111

- This proven cow is out of the high selling female from Hudson Pines Living Legacy Sale, STF Desa Rae. U347 is powerful in her construction, well balanced in overall make up, with a pedigree to back it. Backed by one of the most dominant cows in the Simmental Breed, here is your chance to have genetics out of this prominent cow family. She has given us several daughters, a Lock N Load being one of our favorites who has added style and dimension. Bred to ZKCC Chopper 844U should add balance, style, and dimension. She is safe in calf due October 16. Hillcrest Farm is a BQA Certified and BVD-PI Negative.
- **Bred AI** to ZKCC Chopper 844U, ASA#24553413 on 1/8/17
- **consignor:** Hillcrest Farm

63

KBS Shocker 89Z

1/1/12 • 2645739 • KB89Z • 76

STF Shocking Dream SJ14

MMFS Mambo -5

- CNS Dream On L186
- STF Miss J0114
- WLE Power Stroke
- BRS Ms Jitterbug J68

Purebred

CE	BW	WW	YW	MCE	MILK	MWW	MARB	REA	API
12	1.2	59	81	6	20	49	0.07	0.84	122

- Shocker is one of our good young cows who has produced some outstanding offspring in the short time she has been in production. Moderate framed, nicely balanced is the best way to describe her in which her udder structure and milking ability is the most impressive. Sells with a stout January bull calf at side. Bred back to the Genex baldy Ironhide.
 - **Bred AI** to ACW Ironhide 395Y, ASA#2624126 on 3/21/17
- 63A** 1/25/17 • Bull • BW: 80 • Tattoo: KB02E
Sire: **WBSF Limited 12C**, ASA#3231563
• **consignor:** Kevin Bishop

64

KBS Charm 47U

1/13/08 • 2435800 • KB47U • 84

JDJ Charisma 20P

CNS Dream On L186

Nichols Beauty D93

HC Power Drive 88H

KBSBlackberthasatin17P

B&K Black Bertha Lace

Purebred

CE	BW	WW	YW	MCE	MILK	MWW	MARB	REA	API
8	2.4	59	84	4	14	44	0.05	0.8	106

- Charm is an absolute tank, just massive in her total presence and yet so elegant and attractive in her overall design. She's big ribbed, extremely long bodied, and sits down on a really good set of feet and legs. She stems from our Bertha cow family that has been our most successful. Hate to see this one go. Heifer calf on side.

64A 3/21/17 • Heifer • BW: 98 • Tattoo: KB03E

Sire: WBSF Limited 12C, ASA#3231562

- consignor: Kevin Bishop

65

Felt Karlee 46S

2/4/06 • 2335878 • 4S • 91

CNS Dream On L186

Nichols Legacy G151

CNS Sheeza Dream K107W

JBS Mr Wally 613K

JBS Miss Wally 505N

JBS Miss 339U 505

Purebred

CE	BW	WW	YW	MCE	MILK	MWW	MARB	REA	API
11	3.1	63	82	8	17	48	0.13	0.8	125

- I purchased Karlee from the Felt Family in Nebraska as an open heifer. She has become one of our top producing cows. Generating several daughters and granddaughters who I think have a great future. She is a well designed structurally sound cow with an excellent disposition. Sells with a stout January bull calf on side. Bred back to the baldy halfblood Ironhide from Genex.

- Bred AI to ACW Ironhide 395Y, ASA#2624126 on 3/21/17

65A 1/22/17 • Bull • BW: 79 • Tattoo: KB01E

Sire: WBSF Limited 12C, ASA#3231562

- consignor: Kevin Bishop



SVJ 20-20 Vision C41

SVJ Queen Me U613
- reference dam

66

SVJ 20-20 Vision C41

5/2/15 • 3010842 • C41 • 75

Mr CCF Vision

Mr NLC Upgrade U8676

GCF Miss Elsa

GWS Ebony's Trademark 6N

SVJ Queen Me U613

CNS Queen Me S613

Purebred

CE	BW	WW	YW	MCE	MILK	MWW	MARB	REA	API
11	2.6	71	97	4	14	50	0.15	0.86	112

- Buy them when you can find them! Finding a great bull is the hard part. He was reserve champion bull at Keystone International. This blaze faced bull has had a piece of every show this year including division champion at Simmental Breeders Sweepstakes. We sold half interest in the dam to ETR Cattle Company, Kim Klotz, Nebraska for \$17,500. Many of her progeny have sold in the Griswold sales. We promised the Vossler's that we would bring a really good one for their 10th Anniversary sale. Check him out he's that good!!

- consignor: SVJ Farm



MVS Maxius Liberty

67

MVS Maxius' Liberty

7/3/15 • 2995109 • C8 • 82

MVS Maximus

SRS Fortune 500
Shoemakers Miss Emma

MVS Lady Arya

Nichols Manifest T79
ANDJ Miss Black

Purebred

CE	BW	WW	YW	MCE	MILK	MWW	MARB	REA	API
8	2.1	68	109	11	26	60	0.2	0.73	132

- Purebred bull. Maximus son out of a Nichols Manifest daughter. Excellent growth numbers ranking in the top 15% for Yearling Weight and Carcass Weight. Ranks in top 20% for All Purpose Index and Terminal Index. Actual birth weight was 79 pounds. Adjusted weaning and yearling weights were 789 and 1,263 respectively. The oldest of our four bulls offered in this sale at twenty-two months of age. Virgin bull. Semen tested, and Vet proven breeding sound and ready to go to work. Tested negative of BVD/PI. Conceived born and raised on this farm under BQA standards.

• **consignor:** Mountain View Farm



MVS Erik The Red C11

68

MVS Erik The Red C11

9/15/15 • 3043376 • C11 • 87

TNT Gunner N208

RC Stinger 072K
TNT Miss Honey L9

MVS Miss Scarlet Z16

WS Beef Maker R13
ESS Trisha TR13

Purebred

CE	BW	WW	YW	MCE	MILK	MWW	MARB	REA	API
14	1.6	66	89	14	23	56	0.17	0.74	132

- Purebred red bull. Top of the line EPD's to include top 10% for Calving Ease. Sire and maternal grand sire rank among the leading red Simmental bulls in the country. Dam and maternal grand dam are consistently among our best producers. Birth weight of 83 pounds. Adjusted weaning and yearling weights were 853 and 1,227 pounds respectively. Semen tested and Vet proven breeding sound. Tested negative for BVD/PI. Calm, quiet disposition. Conceived, born and raised on this farm under BQA standards.

• **consignor:** Mountain View Farm



MVS Midnight Maximus C14

69

MVS Midnight Maximus C14

10/10/15 • 3043374 • C14 • 84

MVS Maximus

SRS Fortune 500
Shoemakers Miss Emma

ESS Trisha TR13

CNS Dream On L186
Renee R13

Purebred

CE	BW	WW	YW	MCE	MILK	MWW	MARB	REA	API
12	0.6	54	81	13	24	51	0.15	0.61	128

- Purebred bull. Another moderate framed Maximus son. Maternal grand sire is CNS Dream ON L186. This bull carries the positive traits of both of these excellent sires ranking in the top 20% for Calving Ease and top 25% for Birth Weight EPDs with excellent growth numbers as well. His birth weight was 84 pounds and weaning and yearling weight was 664 and 1,100 pounds respectively. Nineteen months old at the time of sale. Virgin bull, but he is semen tested and Vet proven breeding sound. Tested negative of BVD/PI. Conceived, born and raised on this farm under BQA standards.

• **consignor:** Mountain View Farm

Stars & Stripes Herd Sires...

Contact the owners for more information on semen on these herdsires.

HPF Tradecraft D010

1/5/16 • 3124189 • D010 • 83

JF Milestone 999W

RP/MP Right To Love 015U

TNT Top Gun R244
Ms Macie Lou M112S
SVF/NJC Built Right N48
PCC Queens Valentine R9

Purebred Bull

CE	BW	WW	YW	MCE	MILK	MWW	MARB	REA	API
8	2.6	70	101	8	20	55	0.1	0.27	116

• consignor: Hudson Pines Farm



HPF Tradecraft D010 - reference

CLO Captain America 704Y

3/24/11 • 2595967 • 704Y • 79

CNS Pays To Dream T759

War Diva M704

CNS Dream On L186
MLF BL Jessie K336
Hart Black Oasis F301
JBH Sheza Dandy

Purebred Bull

CE	BW	WW	YW	MCE	MILK	MWW	MARB	REA	API
13	1.9	55	87	8	17	44	0.09	0.84	121

• consignor: CLO Simmentals



CLO Captain American 704Y - reference

MVS Maximus

3/2/07 • 2371205 • T6 • 98

SRS Fortune 500

Shoemakers Miss Emma

LRS Preferred Stock 370C
SRS Dawson Queen D-27
Nichols Blk Destiny D12
Shoemakers Ms Sweet Hart

Purebred Bull

CE	BW	WW	YW	MCE	MILK	MWW	MARB	REA	API
10	0.8	64	102	12	27	59	0.25	0.59	140

• consignor: Mountain View Farm



MVS Maximus - reference

SSC Shell Shocked

4/4/14 • 2880060 • 44B • 77

Remington Secret Weapon 185

Lazy H Shez Too Cool W58

GWS Ebonys Trademark 6N
Aubreys Blackblaze II5T
CNS Dream On L186
SS/Rew Too Cool S365

Purebred Bull

CE	BW	WW	YW	MCE	MILK	MWW	MARB	REA	API
10	1.6	56	72	16	16	44	-0.02	0.88	106

• 2016 high selling bull at \$17,250 selling to KenCo Cattle and Fenton Farms



SSC Shell Shocked 44B- reference



D1 Selling 5 units of SVF/NJC Built Right



Joanna Reynolds is a 17 year old Simmental breeder from western New York. She has been involved in 4-H for eight years showing beef cattle, and participating in livestock judging. She has also shown at NY State Fair, the NYJBPA junior shows, and the 2015 Eastern Regional Simmental Show. Her heart is set on earning her BSN (Bachelor of Science in Nursing), specializing in Pediatrics, and hopes to work in a clinic in Central America. Last fall, Joanna went from being known as a perfectly healthy young woman to being someone who is in need of a liver transplant. She is currently working with her doctors in Buffalo and at Mount Sinai Hospital in New York City for treatment of her condition while they wait for a potential transplant. Her family will incur a great deal of

medical expenses, lost wages, and travel expenses during her care. Art Reynolds has donated 5 units of SVF/NJC Built Right, and all the proceeds from this lot will go to benefit Joanna Reynolds.

DVAuction

Broadcasting Real-Time Auctions

Never Miss An Auction Again!
Watch & Bid online for FREE!

**Visit www.DVAuction.com
and Register Today!**

For General Questions Please Contact Our Office:
(402) 316-5460 or support@dvauction.com



Complimentary guided tour of the Gettysburg Battlefield on Friday, May 5th



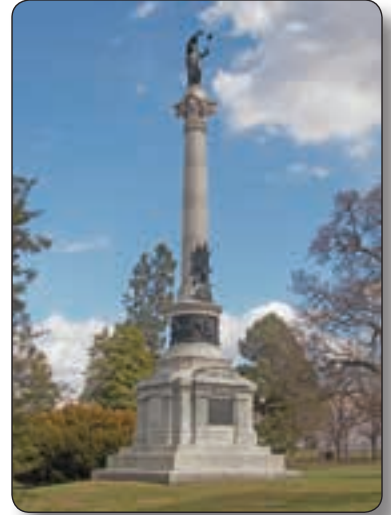
GETTYSBURG. A name widely known in U.S. and World history. In the third year of the American Civil War, 90,000 Northern soldiers, 70,000 Southern soldiers, 72,000 horses and mules, over 600 cannon, met in mortal combat in three days of battle. This was the largest battle ever conducted on the North American continent. The battle was conducted over 6,000 acres of approximately 38 separate farms surrounding the town of Gettysburg.

Mountain View Farm, host farm for the Gettysburg Stars and Stripes Sale, sits less than two miles from the battlefield. The Stars and Stripes Sales Group is pleased to offer a complimentary tour of the Gettysburg Battlefield as part of this year's sale.



The tour leader this year is Dr. Carol Reardon of Penn State University. Carol is also co-owner of two of the producing dams in the Mountain View Farm herd. Carol and Tom Vossler are both military historians who specialize in history of the American Civil War. In 2013 their multiple award winning book on the Battle at Gettysburg entitled *A Field Guide to Gettysburg* was published by the University of North Carolina Press. The tour Carol will lead will include a lot of what is in their book in regard to the farms over which the battle is fought. The tour will also include visits to the state memorials of Virginia, North Carolina, Maryland, Pennsylvania and New York.

To reserve your space(s) on this popular battlefield tour, call Tom or Barbara Vossler at 717-337-1615. If no answer to your call, leave a voice mail with your name and headcount for the tour. The tour will depart the sale barn on Friday, May 6th at 1:00 pm and will last about two and one-half hours giving you plenty of time to view the cattle prior to the social hour at the farm house at 5:00 pm.





A special THANKS for these businesses for sponsoring our sale meal...



**Pennsylvania
Simmental
Association**

for more information
or to join visit
our website at...

www.pasimmental.com



**YOUR MASTER EAST COAST
SULLIVAN DEALER
AND FEED DEALER**

1-800-649-SHOW • GETTYSBURG, PA



**Nationwide[®]
Agribusiness**

On Your Side[®]

T Eileen Pabody

Barnstormner Society Member

147 N Fourth St. Gettysburg PA 17325

717-339-0055, telephone

717-339-0052, fax

PABODYT@nationwide.com

www.nationwide.com



PO Box 216 Abbottstown, PA 17301

717-259-0609

150 S. Seward St. York, PA 17404

717-843-8889



PREVENT DISTRIBUTORS, INC

PO Box 15

Peach Bottom, PA 17563

717-548-3811

STRONGHOLD

**LINCOLN HIGHWAY
CATTLE EQUIPMENT**

Quality Livestock Handling Systems

D.L. and M.L. Bentzel

717-225-4187

Thomasville, Pa.



Notes

STRONGHOLD

The Top Choice In Cattle Handling Equipment Since 1965



Working Chutes—CrowdingTubs—Alley Ways
Squeeze Chutes—Corral Panels—Y-Sorts

Eastern States Livestock Systems

Breezewood, PA

800-242-3240

814-735-4554 Evening

Eastern States Livestock Systems has dealers in and serves PA, NY, WV, MD, VA, NJ, DE, and the New England states. Call for more information.



DP Sales Management, LLC
Doug & Debbie Parke • 859.421.6100
Drew & Holli Hatmaker • 423.506.8844
153 Bourbon Hills • Paris KY 40361

PRESORTED
FIRST CLASS MAIL
US POSTAGE PAID
GARDNER, KS
PERMIT NO. 35

FIRST CLASS

TIME DATED MATERIAL