

A close-up of the American flag, showing the blue field with white stars and the red and white stripes. The flag is draped over a dark, textured surface.

*9<sup>th</sup> Annual*

A large red five-pointed star with a blue and white border. The text "Stars & Stripes" is written in a white cursive font across the center of the star.

*Stars & Stripes*

*Gettysburg*

# Stars & Stripes

**May 7, 2016 • 12:30 EST**

**Gettysburg, PA**

A black and white photograph of a cannon, likely a Civil War era cannon, positioned on a grassy field. The cannon is mounted on a wooden carriage with large spoked wheels. The background is slightly blurred, showing a line of trees in the distance.





Gettysburg

# Stars & Stripes

Sale Hosted By... Mountain View Farms  
665 Knoxlyn Rd • Gettysburg, PA 17325  
Tom and Barbara Vossler

## **Sale Day Phones:**

717.337.1615, Tom Vossler home • 717.337.1613  
717.752.6823, Tom Vossler cell • 859.421.6100, Doug Parke cell

## **Hotel Information:**

### **Sale Headquarters**

**Hilton Garden Inn, 717.334.2040**

1061 York Road (Route 30 East), Gettysburg, PA 17325

Group Rate: \$110.00

Group Code: PES Group Name: Stars and Stripes

Other Hotels in the Area (No Group Rates):

**Hampton Inn Gettysburg, 717.338.9121**

1280 York Road, Gettysburg

**Comfort Inn, 717.337.2400**

871 York Road, Gettysburg

**Days Inn, 717.334.0030**

865 York Road, Gettysburg

## **Air Transportation:**

Closest private airport is the Gettysburg airport, 1.5 miles from the farm, capable of handling twin engine prop planes. Closest commercial airport is Baltimore-Washington International (BWI) an hour and a half from the farm.



## **Sale Manager:**

Doug & Debbie Parke • 859.421.6100

Drew & Holli Hatmaker • 423.506.8844

153 Bourbon Hills • Paris KY 40361

859.987.5758 • pleent@aol.com

## **Sale Staff:**

Bruce Miller

817-247-0115

Shane Ryan

309-371-7490

Bobby Grove

540-850-0266

## **Sale Consultants:**

DP Sales Management

Doug Parke

859-421-6100

Drew Hatmaker

423-506-8844

Dalton Lundy

502-727-6898

## **Association Representatives:**

Cliff Orley, ASA Trustee

Jame Secondino, American Livestock

## **Insurance:**

765-832-2697

## **Trucking:**

Mark Howard

865-300-3636

Sam Harroun

319-325-9389

## **Sale Terms and Conditions:**

All buyer numbers will only be issued with a valid ID and payment is due day of sale. DP Sales Management would appreciate timely settlement of receivables within 15 days of date of sale. Any person not complying with that guideline will be pursued legally. DP Sales accepts Visa/Mastercard. Cattle will not be transferred until paid for in full. Cattle will sell under Suggested Sale Terms and Conditions of the American Simmental Association For updated terms and details go to [www.simmental.org](http://www.simmental.org).

## **Announcements:**

Announcements made sale day from the auction block during the sale take precedence over printed material associated with this sale. Anyone attending this sale attends at his or her own risk, neither sale management nor Mountain View Farm assume liability for accidents or loss of property. DP Sales Management is only an agent for the seller and has no responsibilities other than those involved in conducting the sale. Mountain View Farm is BQA certified and certified Johnnes free herd.

## **Sexed Heifer Semen:**

Sexed semen is not 100% accurate, therefore Gettysburg Stars & Stripes consignors can not guarantee gender of resulting calves.

## **EPDs:**

Please note the EPDs may change from the time the sale catalog is printed until registration papers are transferred. EPDs listed are the new Spring 2016 numbers.

## **Directions to Sale Site:**

From the North, South or West, take the I-81 exit for Route 30 East at Chambersburg toward Gettysburg. After crossing over South Mountain, look for road signs directing you to "Land of Little Horses" and "KOA Campground". These signs will alert you to the right hand turn from Route 30 onto Knoxlyn Road. After making the turn onto Knoxlyn Road, our farm lane entrance will be 1.4 miles on the right. Vehicles with trailers please take the second entrance and follow signs to the trailer parking area.

From the North, South or East, take Route 30 West from Route 15 thru the town of Gettysburg. Three miles on Route 30 West from the Gettysburg town square (traffic circle), you will make a left hand turn onto Knoxlyn Road. Road signs for "Land of Little Horses" and "KOA Campground" will alert you to the turn. After making the turn onto Knoxlyn Road, our farm lane entrance will be 1.4 miles on the right. Vehicles with trailers please take the second entrance and follow signs to the trailer parking area

**Lunch will be served sale day by Biggerstaff Catering!**



# Welcome to Gettysburg!

Barbara and I wish a sincere welcome to friends and prospective buyers to the 9th Annual Gettysburg Stars and Stripes Sale. Once again members of the Gettysburg Stars and Stripes Sale Group from the north-eastern United States, have brought in superior Simmental genetics for your consideration.

It has been a busy year here for all of us since the sale a year ago. In September of 2015 the Pennsylvania Simmental Association hosted the annual ASA Fall Focus Program and Fall board meeting of the ASA Trustees. There was a large turn-out for the annual education event. Barbara and I were pleased to host a gathering of about two hundred Simmental breeders from across the country here at the farm for a meet and greet celebration and a herd walk organized by several of the consignors in this sale.

As in previous years, sale cattle will be placed in fenced but open lots here on the farm prior to sale. They will be sorted by kind, relaxed and grazing so you can view them in their natural state from noon Friday until sale time. If you come out to the farm on Friday for a preview of the possibilities, the sale consignors and breeders will be available throughout the day on Friday May 6th and the morning of Saturday May 7th to answer any questions you might have on their consignments.

If you do arrive on Friday, drop your cattle trailer in the trailer parking lot at the farm before going back into town. In any case feel free to view the animals Friday afternoon and stay for a social gathering - food and beverages - on the patio behind the house beginning at 5:00pm.

The actual sale will be held Saturday afternoon in our sale barn facility immediately adjacent to the open lots. A catered sale day lunch of BBQ Beef Brisket by Biggerstaff's Catering will be provided to you prior to the sale, courtesy of our partnering sponsors from local agri-business companies. Please see our partnering sponsor ads in the catalog and be sure to thank them for your meal.

For those of you who have not been to Gettysburg before, you will find attending this sale can be a great family mini-vacation with plenty of history, antiques and other attractions to keep you busy in addition to the cattle sale. Sale weekend is also the Annual Adams County Apple Blossom Festival, Adams County being one of the largest fruit growing regions in the U.S. If you remember the old-fashioned county fairs of our youth - you will love this fair! Check out their website at [appleblossomfestival.info](http://appleblossomfestival.info). Please look thru this catalog for a listing of additional activities. Come early - stay for a long weekend, and buy some great cattle!

For those of you who participate in the sale thru our arrangement with DV Auctions, we will miss your physical presence with us but certainly appreciate your interest and participation in the sale. Last year DV auctions and the Internet helped us make our cattle available to buyers as far west as Oregon, as far north as South Dakota and as far south as Georgia and Tennessee. We are fortunate to have an expert team of haulers to move cattle quickly from the sale barn to new owners throughout North America.

We have arranged for a complimentary guided tour of the Gettysburg Battlefield on Friday afternoon leaving the sale barn at 1:00 pm. The tour will last about two and one-half hours. See full tour information elsewhere in this catalog. Please call ahead (717-337-1615) to reserve your space for the battlefield tour.

Once again, we are pleased to offer complimentary drinks and snacks on the patio at the house late Friday afternoon/early evening.

You will find in this catalog reserved motel information for your stay. We highly encourage you to call and make your reservations early as this sale occurs at the start of the very busy Gettysburg tourist season.

We look forward to seeing you here.

Sincerely,

Tom and Barbara Vossler  
Mountain View Farm &  
Stars and Stripes Sales Group



## Mountain View Farm

Tom and Barbara Vossler  
665 Knoxlyn Rd • Gettysburg, PA  
717-337-1615

## CLO Simmentals

Cliff & Lynn Orley  
1486 Mr Wilson Rd • Lebanon, PA  
717-964-2243 • 717-269-0128

## SVJ Farm

Duane and Valarie Snee  
465 Ringland Ridge Rd • Amity, PA  
724-554-0446

## Hudson Pines Farm

180 Bedford Rd. • Sleepy Hollow, NY  
John Walston • 914-631-115  
Ryan Haefner • 815-499-0522

## JEH Simmentals

Jack Herr  
Box 101 • Fredericksburg, PA  
717-507-8342

## Simme Valley Ranch

Jeanne White  
6493 Stauber Rd • Groton, NY  
607-423-4888

## Elm Side Farm

Art Reynolds  
836 Little Dryden Rd • Walton, NY  
607-434-3058

## Powell's Valley Simmentals

Laurie Fantom  
470 Million Dollar Rd • Halifax, PA  
717-350-2516

## Kevin and Ward Bishop

29 Pine Tavern Rd • Elmer, NJ  
856-358-3923 • 856-297-3813

## Stewart's Simmental Cattle

Greg & Sam Stewart  
2016 Armstrong Valley • Halifax, PA  
717 350 5235

## Curry Wagner Simmentals

Curry & Junior Wagner  
1423 Sand Beach Rd • Hummelstown, PA  
717-991-0387

## Ladybug Farm

Ken & Mary Gumaer  
9335 Pearson Rd • Middleport, NY  
716-735-7904

## Hillcrest Farm

Gary & Cindy Bertrand  
148 Millbury St. • Auburn, MA  
508-823-8313





SSC Victorias Secret 49B



## SSC Victorias Secret 49B

4/9/14 • 2880062 • 49B • 71

RemingtonSecretWeapon185

GWS Ebonys Trademark 6N

Aubreys Blackblaze II 5T

CNS Dream On L186

Lazy H Shez Too Cool W58

SS/REW Too Cool S365

Purebred

CE	BW	WW	YW	MCE	MILK	MWW	MARB	REA	API
9	1.3	60	80	6	19	49	0.11	0.78	121



SSC Victorias Secret 49B

• As in the Florida Georgia line song lyrics "Victoria's Secret ain't a secret no more" well that sure fits right here and I'm sure she will be hard to forget. Where do you begin on a female of the caliber of Victoria's Secret 49B. She has been a favorite of all who have seen her at the farm and of everyone who saw her when she was recently named Reserve Grand Champion female at the 2016 PA State Farm Show. Victoria's Secret 49B has all the right pieces to step in and become your next donor and breed changer. She is a stout hiped, big topped, good middled young female that ties it all together with good neck extension and a beautiful bald face. She is sired by Remington Secret Weapon, who has sired many champions and whose semen is not easy to get. Her dam is one of our most consistent and productive donor cows, Lazy H Shez Too Cool W58. Victoria's Secret is a maternal sister to the high selling lot in last years sale going to Pickerel Farms, GA and to the high selling open heifer in last years sale going to Woodlawn Simmentals, GA. Her flushmate brother, that sells in this sale, has been Grand Champion Bull numerous times. I stated last year that this cow family was really gaining some momentum. As you can see it hasn't slowed down and I don't expect it will anytime in the near future. As an added bonus Victoria's Secret is raising a knockout young baldy heifer calf who is destined to write her own chapter in the legacy of this cow family if not write her own book. Retaining the right to one IVF cycle with a minimum of 6 transferrable embryos. Work to be done at the buyers convenience and sellers expense.

**1A** 2/2/16 • Heifer • BW: 76 • Tattoo: 22D • Sire: **WLE Uno Mas, ASA# 2532016**

• **consignor:** Stewart's Simmental Cattle





SSC Shell Shocked 44B



## SSC Shell Shocked 44B

4/4/14 • 2880060 • 44B • 77

RemingtonSecretWeapon185

GWS Ebonys Trademark 6N

Aubreys Blackblaze II 5T

CNS Dream On L186

Lazy H Shez Too Cool W58

SS/REW Too Cool S365

Purebred

CE	BW	WW	YW	MCE	MILK	MWW	MARB	REA	API
9	1.3	60	80	6	19	49	0.11	0.78	121

• SSC Shell Shocked 44B has been fun to own and show. Everyone one that has gotten a chance to see him has been very impressed to say the least. As a calf Shell Shocked was Reserve Grand Champion bull at the PA Farm Show. Last fall he was selected Grand Champion bull at the 2015 KILE. His last outing he chosen Grand Champion bull at the 2016 PA State Farm Show. Shell Shocked is a stout hipped, big topped, nice fronted, huge footed young bull that has tremendous bone. His semen was collected at a little over a year old and he produced over 250 units worth of semen that was excellent quality. As a little icing on the cake Shell Shocked's temperament is fantastic and suitable for a kid, my 8 year old son lead him all over at the last show. He has become one of his favorites on the farm. As I noted in his flushmate sisters footnote, this cow family has been the model of consistency regardless of sire. A flushmate brother to Shell Shocked was the top indexing Simmental bull at the 2015 PA Bull test, gaining 5.21 lbs per day. So no matter whether you are looking for performance or eye appeal this family will be able to exceed your needs. Selling full possession and 2/3 semen interest.

• **consignor:** Stewart's Simmental Cattle



SSC Shell Shocked 44B



Half sib to Lot 1 & 2





Lazy H Shez Too Cool W58 daughters



## Lazy H Shez Too Cool x Remington Secret Weapon

3 Embryos Guaranteeing 1 Pregnancy

RemingtonSecretWeapon185

GWS Ebonys Trademark 6N

Aubreys Blackblaze II 5T

CNS Dream On L186

Lazy H Shez Too Cool W58

SS/REW Too Cool S365

### Proj EPDs

CE	BW	WW	YW	MCE	MILK	MWW	MARB	REA	API
9	1.2	60	80	6	19	48	0.12	0.78	122

- Selling 3 embryos guaranteeing 1 pregnancy if work is performed by a certified embryologist.

- consignor: Stewart's Simmental Cattle



LTS/CLO Scandalous

CLO Star Struck - reference dam



- If you like your two year old cows sound, feminine, attractive, big bodied and "wet" Scandalous is for your! Calved out of 23 months old she is doing a super job with her Gunslinger bull calf. This young cow is the kind many breeders seek out for their front pasture and donor pen. With her strength of both phenotype and pedigree she is a sure fit for this scenario. Note that Scandalous is an own granddaughter of the peerless WAR Diva M704. Other cows have tried but none have matched Diva's record of producing National Champions to date. Buy into this highly productive cow family and reap the benefits! Will be rebred to Hook's Broadway. Sells with bull calf, CLO Dillon 14D. Homozygous black and homozygous polled, OCV, BVD-PI negative.

3A 2/18/16 • Bull • BW: 72 • Tattoo: 14D

Sire: SS/PRS Gunslinger 824X, ASA# 2571741

- consignor: CLO Simmentals & Lone Tree Simmentals



## LTS/CLO Scandalous

3/9/14 • 2905317 • 14B • 85

Mr NLC Upgrade U8676

Ellingson Legacy M229

Ms NLC Mojo S6119 B

MAAS True Dream 404P

CLO Star Struck 77S

War Diva M704

### Purebred

CE	BW	WW	YW	MCE	MILK	MWW	MARB	REA	API
8	3.1	76	113	5	18	56	0.16	1.08	121



RCC Black Star U8111



CCR Black Star - reference granddam



RB HPF-GF Exposition RB16Z - reference AI sire



JF Empress 7050T



## RCC Black Star U8111

3/7/08 • 2463982 • U8111 • 94

HC Power Drive 88H

BH Miss MT 02K

WLE Power Stroke  
Kappes Lady Irish F88  
SAC Mr Mt 73G  
CCR Black Star

Purebred

CE	BW	WW	YW	MCE	MILK	MWW	MARB	REA	API
8	2.2	52	77	1	23	49	0.01	0.85	108

• Black Star U8111 is the full sister to one of the all time highest dollar generating cows of our breed, CNS Black Star T702, owned by Lazy H and Adkins Cattle. U8111 has had to play 2nd fiddle to her famous sister but she has done more than her fair share of producing elite quality cattle as well. She has produced sale toppers for B&K Farms, Southern Jewel Cattle, and her stoutest set of ET's look very promising in Kansas right now. Freshly calved and ready to start cranking out the embryos for you, return on investment is in the very near future. U8111 is an excellent embryo producer and has averaged over 12 good embryos per flush.

• **consignor:** Hudson Pines Farm



## JF Empress 7050T

2/4/07 • 2392361 • 7050T • 86

SVF/NJC Built Right N48

Triple C Empress N3063L

CNS Dream On L186  
NJC Ebony Antoinette  
HC Power Drive 88H  
OSU KJ 9FB3 Emerald 7144

3/4 Blood

CE	BW	WW	YW	MCE	MILK	MWW	MARB	REA	API
12	0.8	44	71	7	32	55	0.11	0.6	113

• With limited Built Right semen still left out there, you'll notice that IF you can find it for sale, it doesn't come cheap and that is because the phenomenal females he can make such as 7050T. This versatile 3/4 blood donor is backed by some of the most consistent and marketable genetics our breed has ever seen. The Empress family has been the backbone of successful programs such as Sunset View, Janssens, Kreigers, Sanders, Triple C, Hudson Pines, and many more. Add to the mix Power Drive, Built Right, and Ebony Antoinette = foolproof. 7050T progeny have topped Janssen and Kreigers and expect to see her daughters highlight the The Living Legacy sales in the next couple years. The homework is done and the marketing is already taken care of on this powerful female. 7050T averages almost 20 embryos per flush and will be roughly 60 days pregnant at sale day and ready for IVF! HPF would be willing to supply a straw of our new purebred bull, Classified 106C, if the new owner wishes to IVF 7050T that way. If the new owner wishes not to IVF 7050T, HPF & Guthridge would be willing to give either 2 embryos out of 7050T and Loaded Up or 2 embryos by Two Step to help you get progeny on the ground quicker.

- **Bred AI** to RB HPF-GF Exposition RB16Z, ASA#2642979 on 3/1/16
- **consignor:** Hudson Pines Farm & Guthridge Farms





SSC Innocent Beauty 319C



## SSC Innocent Beauty 319C

3/19/15 • 3029269 • 319C • 60

W/C BF Innocent Man

W/C No Remorse 763Y

Miss Werning 174Y

SVF/NJC Built Right N48

MF Miss Built Right U553

MF Miss Crossfire R253

Purebred

CE	BW	WW	YW	MCE	MILK	MWW	MARB	REA	API
10	1.1	52	70	7	24	49	0.14	0.54	118

- Innocent Beauty is a beautiful stout hipped, great necked heifer that has tremendous rib shape. She will compete with the best of them in the show ring and then is sure to make an outstanding front pasture/ donor cow. She is a daughter of our well known and popular baldy donor "Beauty". This making Innocent Beauty a maternal sister to many of our Champions and High Sellers, including the many time Champion and \$14,000 high seller out of this sale going to David and Jordan Carter of NC. Not to be out shined though, Innocent Beauty, in her only time out was crowned Reserve Calf Champion in a very tough calf division at the PA State Farm Show. Don't miss out on your chance to own your own daughter of "Beauty" and sired by the very popular Innocent Man bull.

- consignor:** Stewart's Simmental Cattle



MF Miss Built Right U553- reference dam





## SSC Lucky In Love 413B

4/13/14 • 2880077 • 413B • 89

Mr NLC Upgrade U8676

Woodview Lucky

- Ellingson Legacy M229
- Ms NLC Mojo S6119 B
- RC Club King 040R
- MF Miss Built Right U553

Purebred

CE	BW	WW	YW	MCE	MILK	MWW	MARB	REA	API
7	4	80	121	6	20	60	0.33	1.04	131

Lucky in Love has a tremendous amount going for her. To start off she is a grand daughter of our widely known, high impact "Beauty" donor. Lucky in Love is a 3/4 sister to our crowd favorite and \$14,000 high seller a couple years ago, going to David and Jordan Carter in NC. She is a very eye appealing, beautiful uddered, good hiped and middled, young two year-old. The baldy heifer calf that she has at her side by the popular One Eyed Jack sure has a cool look to her and I am confident will only continue to get better. This is a pair that you won't want to miss sale day. Lucky in Love will have a long productive life ahead of her and her eye appealing heifer calf would more than likely pay for the pair if you decided you wanted to let go of her little "Beauty".

- Bred AI to CAJS Blaze of Glory, ASA#2939840 on 4/9/16

**7A** 1/23/16 • Heifer • BW: 81 • Tattoo: 123D

Sire: TLLC One Eyed Jack, ASA# 2668223

- consignor: Stewart's Simmental Cattle



SSC Lucky In Love 413B



## MF Miss Built Right x Sandeen Upper Class

3 IVF Embryos Guaranteeing 1 Pregnancy

Sandeen Upper Class 2386

MF Miss Built Right U533

- Mr NLC Upgrade U8676
- Sandeen Donna 7386
- SVF/NJC Built Right N48
- MF Miss Crossfire R253

Proj. EPDs

CE	BW	WW	YW	MCE	MILK	MWW	MARB	REA	API
5	2.9	67	99	5	22	55	0.2	0.76	105

Selling 3 IVF sexed heifer embryos guaranteeing 1 pregnancy if work is performed by a certified embryologist.

- consignor: Stewart's Simmental Cattle



MF Miss Built Right - reference dam



Daughter of  
MF Miss Built Right U533

*Welcome to the historic Gettysburg!*

As you can see from looking through the catalog, the Stars & Stripes Sale is a true event of the Simmental breed. No where can you go take the family, and drive through our nation's history just a few miles from a Simmental sale.

The Stars & Stripes group might be small in numbers, but they make up for that from their mighty Simmental genetics available to the customer. You can see from the catalog that they have assembled a exceptional group of females, featuring a group of exceptional first calf females and proven cows. The sale has been making a great name for themselves offering bred females and cows that still have plenty of producing years in front of them. This year they have again decided to offer a select group of herd sires - these gentlemen might be the sale feature this year!

The consignors along with the sale staff is available to discuss the cattle offering or utilize DV Auction if you can't make the trip. Again, we invite you to come to Gettysburg and take in all that the Stars & Stripes Sale has to offer. Who knows you might even run into Robert E. Lee!

*Doug Parke*



Doug & Debbie Parke 859.421.6100  
Drew & Holli Hatmaker 423.506.8844  
153 Bourbon Hills • Paris KY 40361  
859.987.5758 • e-mail: pleent@aol.com  
[www.parkelivestock.com](http://www.parkelivestock.com)



HPF Caliente U335 - reference dam



LLSF Uprising Z925  
- reference sire



Tices Miss Zany - reference dam



SVJ Wild Fire Dream C788  
- reference sire



### Attractions...

Within a fifteen minute drive of Mountain View Farm and downtown Gettysburg is the Adams County fairgrounds. Sale weekend is also the Adams County Apple Blossom Festival held at the fairgrounds. Adams County Pennsylvania is the largest fruit producing region in the Northeast United States. The Apple Blossom Festival is one of the county fairs you might remember and it is a great time for all attendees.

## HPF Caliente U335 x LLSF Uprising Z925

9

Heifer Pregnancy • Due 8/25/16

LLSF Uprising Z925

Heads Up 20X ET  
LLSF Untouchable U925  
Wheatland Bull 468P  
GCF Miss Caliente

HPF Caliente U335

Proj EPDs

CE	BW	WW	YW	MCE	MILK	MWW	MARB	REA	API
8	2	66	103	5	19	53	0.11	0.78	109

• HPF Caliente U335 was a cornerstone donor here at HPF for several years, producing Living Legacy sale toppers year after year. After selling as the featured Lot 1 donor in The Living Legacy X, she has continued to excel at Hillstown Farms in IL. We were lucky enough to have a few embryos in the tank that resulted in this HEIFER CALF pregnancy due 8-25-2016. Uprising has already sired champions at the National level and his offspring have topped almost every sale they've been in as well. With the unmatched success being contributed from both sides of this pedigree, the resulting heifer calf will no doubt be a head turner. Black commercial recip, D33, due 8-25-2016 with a sexed heifer calf.

• **consignor:** Hudson Pines Farm

9A

## Tices Miss Zany x SVJ Wild Fire Dream

3 Embryos Guaranteeing 1 Pregnancy

SVJ Wild Fire Dream C788

SVJ Wild Fires Dream  
SVJ Light My Fire  
HC Power Drive 88H  
IC Ziggy L10

Tices Miss Zany

Proj EPDs

CE	BW	WW	YW	MCE	MILK	MWW	MARB	REA	API
9	1.4	54	80	7	23	51	0.05	0.93	119

• Selling 3 embryos guaranteeing 1 pregnancy if work is performed by a certified embryologist. Only in Pennsylvania sale would we sell these embryo's. The Zany cow out of Chip and Debbie Tices program has done it all from the PA Bull Test to the junior programs. There is nothing like the great Power Drive genetics. Thank you Roger Allen and Triple C Farm for your influence on the Simmental breed. Our offering of Zany and Wild Fire Dream is unbelievable! We believe this is a true tribute to Zany, Tices and our good friend Roger Allen. This is a rare opportunity don't miss it!

• **consignor:** SVJ Farm





## ESS Cookie CX10

1/2/15 • 2978810 • CX10 • 90

B C Lookout 7024

ESS Xceeds X10

O C C Legend 616L  
Gibbet Hill Mignonne E37  
GWS Ebony's Trademark 6N  
Reachs Kentucky Girl

SimAngus

CE	BW	WW	YW	MCE	MILK	MWW	MARB	REA	API
10	2.2	63	91	3	15	46	0.38	0.87	114

- Nice long bodied ,square made 1/2 blood female that is out of the great BC Lookout of the Angus breed. Take this one home turn her out and watch the dollars come back making 3/4 blood Simmental's. BVD & PI negative. Breeding information will be updated in supplementary sheet on sale day.

• **consignor:** Elm Side Farm



ESS Cookie CX10



## ESS Cricket CAX37

1/2/15 • 2978781 • CAX37 • 75

GLS New Direction X184

ESS Ava AX37

HSF Better Than Ever  
GLS N6  
CLO LTS Entourage 72T  
X37

3/4 Blood

CE	BW	WW	YW	MCE	MILK	MWW	MARB	REA	API
12	-1.1	51	74	7	18	43	-0.02	0.72	112

- Nice red female that is packed with loads of dimension of rib and heavy muscle,even with being so stout still has no problem getting out and moving on a nice sound foot. BVD & PI negative. Breeding information will be updated in supplementary sheet on sale day.

• **consignor:** Elm Side Farm



ESS Cricket CAX37



## LBF Uptown Girl 200C

2/11/15 • 3079937 • 200C • 81

Mr NLC Upgrade U8676

LBF Millicent

Ellingson Legacy M229  
Ms NLC Mojo S6119 B  
Sand Ranch Hand  
LBF687S

Purebred

CE	BW	WW	YW	MCE	MILK	MWW	MARB	REA	API
9	0.5	66	98	7	25	58	0.28	1.13	143

- LBF Uptown Girl is a moderate framed upgrade daughter. She has the thickness, depth, and capacity to make an excellent easy keeping cow, just like her dam who produces a great calf every year. She has an outstanding API of 143.1.

• **consignor:** Ladybug Farm





JEH Miss L&L 217C



## JEH Miss L&L 217C

2/17/15 • 3096925 • 217C

Remington Lock N Load 54U

Remington On Target 2S  
Bar 15 Miss Knight 78E-51G  
Hooks Shear Force 38K  
JEH Ivy III

JEH Ivy Z227

Purebred

CE	BW	WW	YW	MCE	MILK	MWW	MARB	REA	API
13	0.05	57	94	8	21	49	0.14	1.31	134

- A black purebred heifer that is three generations of breeding, going back to the country ivy cow. This girl is wide topped, stout hipped, bold sprung, with loads of eye appeal. An impressive heifer with great attributes.
- consignor:** JEH Simmentals



SVJ Light Me Up - reference granddam



## SVJ Shining Lady C3

2/17/15 • 3091015 • C3 • 78

SVJ Lizzie's Power Y32

BMR Explorer  
Triple C Lizzie S83L  
AJE/HS/MBCC Silversmith  
SVJ Light Me Up

SVJ Shining Star X3

Purebred

CE	BW	WW	YW	MCE	MILK	MWW	MARB	REA	API
9	1.7	56	75	4	17	45	0.1	0.76	112

- What a great mating! Lizzie's Power Y32 was Grand Champion at Keystone International as a calf, Ohio State Fair and the American Royal. The dam side with Silversmith and Burn It Up brings a lot of style and performance to the table. Genetics like these are hard to find! Don't let her get away!
- consignor:** SVJ Farm



JEH Miss Dixie 227C



## JEH Miss Dixie 227C

2/27/15 • 3096927 • 227C

Hooks Shear Force 38K

Nichols Legacy G151  
C&D Tracy  
Wheatland Bull 468P  
JEH Kelly

JEH Dixie X28

Purebred

CE	BW	WW	YW	MCE	MILK	MWW	MARB	REA	API
16	-0.9	58	80	11	28	57	0.29	1.24	151

- This black beauty is out of the best milking cow I have ever had. (Who unfortunately met an early demise) and also comes from a legacy of great Simmentals, Goldmine-468P-Shear Force. She is a very personable, deep sided broody female.
- consignor:** JEH Simmentals



16

## JEH Kelly 224C

2/24/15 • 3096926 • 224C

Mr NLC Upgrade U8676

JEH Kelly

Ellingson Legacy M229  
 Ms NLC Mojo S6119 B  
 SS Goldmine L42  
 JS Country Ivy

Purebred

CE	BW	WW	YW	MCE	MILK	MWW	MARB	REA	API
8	2.4	71	104	5	23	58	0.27	1.19	136

• A solid black attractive heifer, with impressive length and depth of body. Her mother has been very good to us over the years and has produced quality calves. Her Sire goes without saying, contributing greatly to the quality of this heifer.

• **consignor:** JEH Simmentals



JEH Kelly - reference dam

17

## LBF American Girl

3/5/15 • 3079927 • 210C • 81

CLO Captain America 704Y

LBF Something Special

CNS Pays To Dream T759  
 War Diva M704  
 Sand Ranch Hand  
 LBF Black Tiara

Purebred

CE	BW	WW	YW	MCE	MILK	MWW	MARB	REA	API
12	1	53	76	10	17	43	0.1	0.71	121

• LBF American Girl is a homozygous black polled COL Captain America daughter that combines performance, pedigree and style in a complete package. She has the depth, thickness and muscle without losing her femininity. She has a API of 121.4.

• **consignor:** Lady Bug Farm



CLO Captain American 704Y - reference sire

18

## SVJ Melody C341

3/7/15 • 3091017 • C341 • 82

SVJ He's All That Z51

SVJ Queen Me Z341

CNS Dream On L186  
 War Katrina K201  
 GWS Ebonys Trademark 6N  
 CNS Queen Me S613

Purebred

CE	BW	WW	YW	MCE	MILK	MWW	MARB	REA	API
13	2	63	85	7	17	49	0.15	0.85	126

• Sheza Dandy and Queen Me doesn't get much better than this! Great matings! She will show well but best of all she will make a great mama cow! API 125.9 and CE 12.6 that is truly where we want to be in the business. These are genetics you can rely on. Purple comes naturally to the cow clan.

• **consignor:** SVJ Farm



## Attractions...

Within a ten minute drive of Mountain View Farm is the Eisenhower Farm owned by former U.S. Army General and U.S. President Dwight D. Eisenhower. In addition to his many other activities, Ike maintained a national prize-winning herd of Angus cattle. Although Ike's herd is gone now, the house and barns are maintained as they were when the Eisenhower's lived there and are open to tours by the public.



CWSF Courtney C15



### Attractions...

Mountain View Farm is located in the antique capital of the nation centered in Adams and Lancaster counties. The nearby Gettysburg Outlet Mall offers shopping at numerous famous brand stores.



CLC Clairissa 4AC

19

## CWSF Courtney C15

4/12/15 • 3087129 • C15 • 88

**CLO Absolut 8A**

**CWSF Dew Right X4**

JF Milestone 999W

CLO Tempest 18ST

HTP SVF In Dew Time

MCMF Tina T81

#### Purebred

CE	BW	WW	YW	MCE	MILK	MWW	MARB	REA	API
11	1.1	67	92	7	16	49	0.12	0.74	126

- Courtney C15 is a second generation CWSF female that is loaded up with breed leading sires and cow families. Some that are close up in her pedigree are Milestone, Diva, Equarta, and Honeydew, also of which make really superior cows in production. This feminine moderate framed female should be no exception. Courtney exhibits a very nice balance between both phenotype and genotype. With the untimely death of her sire a few "Absolute" daughters will be offered for sale. They are the keeping kind! Sells open, OCV, BVD-PI neg, homozygous black and homozygous polled.

- **consignor:** Curry Wagner Simmental Farm

20

## SVJ Lucky Lady C09

4/14/15 • 3091019 • C09 • 82

**PCSC Burnin' Fatt Z6**

**SVJ Burning Delight A09**

Flying B Cut Above

Lazy H Dream Baby Dream

SVJ Royal One Y75

SVJ Burning Desire W9

#### Purebred

CE	BW	WW	YW	MCE	MILK	MWW	MARB	REA	API
9	2.4	58	83	8	18	47	0.11	0.66	120

- This young female just keeps getting better and better! We love our Burnin' Fatt Z6 calves. They come easy and grow and style to burn. Outcross genetics, this female has a great future. Great numbers check them out!

- **consignor:** SVJ Farm

21

## CLO Clairissa 4AC

4/20/15 • 3033290 • 4AC • 84

**Rubys Wide Open 909W**

**LTS Va-Va-Voom**

LBS The Foreman 702T

Rubys Miss Cleo S601

CLO LTS Entourage 72T

LTS Oh My

#### Purebred

CE	BW	WW	YW	MCE	MILK	MWW	MARB	REA	API
8	2	61	91	3	13	43	0.1	0.72	104

- Mass, power, performance and style terms that all fit Clairissa and a baldy face to go with it! We feel this young female will be a standout in the show ring and later in the pasture. Out of a two year old Entourage Daughter she came with a 78 lb actual birth weight and has continued to grow well ever since. With her foot size and correct structure she should prove to be a low maintenance moderate sized cow that is much in demand. Sometimes phenotype and genetic evaluations are at odds with one another, that is definitely the case here! Sells open, OCV, BVD-PI negative, homozygous black and homozygous polled.

- **consignor:** CLO Simmentals





## LBF Gold Nugget

4/25/15 • 3079922 • 223C • 89

HPF Mr Golddust R065

LBF Pretty Woman

SS Goldmine L42  
BCS Queen Of Hearts  
SAC Mr Mt 73G  
LBF Mariah

Purebred

CE	BW	WW	YW	MCE	MILK	MWW	MARB	REA	API
6	3.6	58	75	2	22	51	-0.07	0.81	105

- LBF Gold Nugget is a black polled Golddust daughter. She is a long necked deep bodied heifer who puts the package together, moderate frame, loads of rib, and overall power.

• **consignor:** Ladybug Farm



HPF Mr Golddust R065 - reference sire



## HFSC Stylish Crown Royal

5/2/15 • 3033865 • HC19 • 82

Silveiras Watchout 0514

Sure Bet Princess

B C Lookout 7024  
Silveiras Elba 6546  
JS Sure Bet 4T  
HPF Ms Lacey S046

SimAngus

CE	BW	WW	YW	MCE	MILK	MWW	MARB	REA	API
12	-0.9	53	88	8	19	45	0.39	0.41	129

- Stylish Crown Royal is among the most stylish spring calves we have produced, making the decision to sell her difficult. She puts all the right parts together creating an overall eye appealing design. Crown Royal is sound in her structure, soggy through her middle, big footed, and wide topped. She is halter broke, ready for the show ring where she is sure to be an eye catcher. BQA Certified Herd. BVD-PI Negative.

• **consignor:** Hillcrest Farm



HFSC Stylish Crown Royal



## SVJ Joy's Shadow C249

5/4/15 • 3091021 • C249 • 75

SVJ Rogue Z3

SVJ Antoinettes Joy U249

BMR Explorer  
SVJ Shining Star X3  
MAAS True Dream 404P  
BHS JF Antoinettes Joy

Purebred

CE	BW	WW	YW	MCE	MILK	MWW	MARB	REA	API
8	1.5	55	75	6	18	46	-0.01	0.72	116

- The Antoinette cow family has had a huge influence on the Simmental breed. If you believe in proven genetics take a look at this one. She is young and keeps getting better everyday. The Rogue bull is outcross genetics and is working very well on our farm. We have every confidence in her future earning power. Buy her and see her elite potential!

• **consignor:** SVJ Farm





CLO Contessa 10C



## CLO Contessa 10C

5/7/15 • 3033292 • 10C • 78

CLO Captain America 704Y

CNS Pays To Dream T759

War Diva M704

3C Macho M450 BZ

Swain Penny 426P

BV Macho Mama 10U

Purebred

CE	BW	WW	YW	MCE	MILK	MWW	MARB	REA	API
7	3.4	65	94	10	19	51	0.12	0.72	125

- Contessa is an interesting combination between the highly maternal CLO Captain America and the massive side of "Macho". Plenty of length and depth and sound structured to be sure. Her birth weight of 78lbs. Couples with a very pleasing set of EPDs and above bred average API. Contessa's dam is very moderate sized with an abundance of milk which helped provide Contessa with a 675 lb Adj. weaning weight. All these factors should add up to a very pleasing front pasture brood cow prospect. Sells Open, OCV, BVD-PI neg. Homozygous black and homozygous polled.

- consignor:** CLO Simmentals



## SVJ Special Lady C47

5/14/15 • 3091018 • C47 • 80

PCSC Burnin' Fatt Z6

Flying B Cut Above

Lazy H Dream Baby Dream

SVJ Royal One Y75

SVJ Fancys Magic U47

SVJ Fancys Dream A47

Purebred

CE	BW	WW	YW	MCE	MILK	MWW	MARB	REA	API
9	1.9	57	85	8	19	47	0.08	0.67	116

- This is another young female out of our Burnin' Fatt bull. She has a great front end and neck extension. Beautiful lines as well. If you don't have any Magic Man genetics you need to look at this one. On our farm they make great brood cows. Buy her, watch her grow, and be part of the future.

- consignor:** SVJ Farm

### Attractions...

Immediately adjacent to Mountain View Farm is the "Land of Little Horses" which provides a great miniature horse show for the youngsters.



CWSF Chevelle C34



## CWSF Chevelle C34

9/16/15 • 3087144 • C34 • 78

CLO LTS Entourage 72T

CNS Dream On L186

War Diva M704

BF 0K34 Daytona

DHF Miss Intrigue

MCMF Intrigue W36

Purebred

CE	BW	WW	YW	MCE	MILK	MWW	MARB	REA	API
11	1.4	61	89	10	18	49	-0.04	0.7	111

- CWSF Chevell C34 is one stout made, sound structured fall 2015 prospect. Complete in her lines with plenty of volume and capacity. If you like your cattle with thickness in smooth made design this young lady is for you. She has that competitive look about her where you can have fun showing her, then watch as she matures into one of your most productive cows. Chevelle's sire has proven to be consistent in the high quality and usefulness of his progeny. He has previously sired a National Calf Champion Female an dozens of "Real World" production oriented sons and daughters. This one would make a very good junior project for this year and beyond. Sells Open, OCV, BVD-PI neg, Homozygous black and homozygous polled.

- consignor:** Curry Wagner Simmental Farm





## Simme Valley Custombuilt

28

10/18/15 • 3071688 • W3C • 90

SVF/NJC Built Right N48

Simme Valley Whisper

- CNS Dream On L186
- NJC Ebony Antoinette
- Ellingson BlackPerfector
- Simme Valley Spicy As U

Purebred

CE	BW	WW	YW	MCE	MILK	MWW	MARB	REA	API
15	-1	52	78	9	23	48	0.07	0.44	130

- Sweet fronted show heifer truly describes this girl. She is already exhibiting nice center rib, with a powerful hip. She is a maternal sib to Burlesque, a Milestone fall heifer calf we showed last year, winning 3 Grand Champions and Reserve Supremes.

• **consignor:** Simme Valley



Simme Valley Custombuilt



## LBF Ms Upgrade 186B

29

9/23/14 • 2982902 • 186B • 92

Mr NLC Upgrade U8676

LBF Tippys Ebony

- Ellingson Legacy M229
- Ms NLC Mojo S6119 B
- GWS Ebony's Trademark 6N
- LBF690S

Purebred

CE	BW	WW	YW	MCE	MILK	MWW	MARB	REA	API
9	2.5	75	107	3	22	60	0.29	1.21	131

- LBF Miss Upgrade is a fall calving solid black heifer. She is a moderate framed, sound footed, feminine heifer with capacity. She is bred to calve to GW Premium Beef 11/06/16. With the UPGRADE influence her numbers are sure to satisfy your demand and she will make and excellent cow. She has an API of 131.1.

• **Bred AI** to GW Premium Beef 021TS, ASA#2370545 on 1/25/16

• **consignor:** Ladybug Farm



GW Premium Beef - reference AI sire



## MVS Emelin

30

9/8/14 • 2904629 • B8 • 79

SVF/NJC Built Right N48

MVS Miss Emmy

- CNS Dream On L186
- NJC Ebony Antoinette
- HTP SVF In Dew Time
- Shoemakers Miss Emma

Purebred

CE	BW	WW	YW	MCE	MILK	MWW	MARB	REA	API
12	1.6	67	95	8	19	52	0.17	0.49	136

- Here is a great looking Built Right N48 daughter out of a maternal half-sister to our bull MVS Maximus. These two bulls in combination have produced a heifer with great depth of frame, broad pelvic area and stout legs and feet and a calm disposition. Her yearling frame score was 6.0. Emelin ranks in the top 20% of ASA Spring 2016 EPDs for Calving Ease, All Purpose Index and Stay ability. She was AI bred 02-29-2016 to the popular Sim-Angus bull GW Premium Beef 021TS (ASA #2370545) for a calf due in late November, 2016. The calf will be three-quarters Simmental/one-quarter Angus with projected EPDs of 16.4 CE; -0.85 BW; 151 API and 74 TI. Safe in calf. No pasture exposure to other bulls. Tested BVD/PI negative. Conceived, born, raised and bred on this farm under BQA standards.

• **Bred AI** to GW Premium Beef 021TS, ASA#2370545 on 2/29/16

• **consignor:** Mountain View Farm



MVS Emelin





MVS Lady Ursula B13



## MVS Lady Ursula B13

10/6/14 • 2904626 • B13 • 74

MVS Hot Shot A1

WS Hot Beef X38

MVS Dew Drop Y6

SVF NJC Fully LoadedX113

MVS Miss Emmy

MVS Lady Catelyn Z12

Purebred

CE	BW	WW	YW	MCE	MILK	MWW	MARB	REA	API
14	-1.3	60	85	12	25	55	0.35	0.83	149

• Here is one Barbara counted on keeping in the herd but Tom says she cannot keep them all. "Ushie", as she is known here with her popular German nickname, is a well-developed and equipped bred heifer with a calm disposition. She ranks in the top 5% of ASA Spring 2016 EPDs for Calving Ease, Birth Weight and All Purpose Index. Her yearling frame score was 5.5. She was A/I bred 12-12-2015 to the popular Sim-Angus bull GW Premium Beef 021TS (ASA #2370545) for a calf due 21 September, 2016. The calf will be three-quarters Simmental/ one-quarter Angus with off the top of the chart projected EPDs for Calving Ease, Birth Weight and API. Safe in calf. No pasture exposure to other bulls. Tested BVD/PI negative. Conceived, born, raised and bred on this farm under BQA standards.

• **Bred AI** to GW Premium Beef 021TS, ASA#2370545 on 12/12/15

• **consignor:** Mountain View Farm



MVS Lady Buttercup



## MVS Lady Buttercup

10/15/14 • 2904624 • B14 • 78

MVS Maximus

SRS Fortune 500

Shoemakers Miss Emma

GW Lucky Break 047G

LLL Ms Red Caddy

MVS Miss Blaze

Purebred

CE	BW	WW	YW	MCE	MILK	MWW	MARB	REA	API
10	1.5	59	89	11	21	51	0.15	0.51	120

• Eighteen months ago ASA recognized MVS Maximus (ASA #2371205) as the 18th ranked of all Simmental bulls for Yearling Weight production. Now, at nine years of age and still producing calves, his legacy continues. Here is another Maximus sired heifer with all of the exceptional physical characteristics we have come to expect together with high balanced EPDs across the board. Buttercup is safe in calf to an observed natural breeding on 3-3-2016 by our junior herd sire and SFV/NJC Built Right N48 son MVS Balian (ASA #2904627). The resulting calf will be a purebred with projected EPDs of 10.8 CE; 1.1 BW; 126 API and 64 TI. Balian will be all shined up and ready for you inspection on sale day. Buttercup tested BVD/PI negative. She was conceived, born, raised and bred on this farm under BQA standards.

• **Pasture Exposed** to MVS Balian, ASA#2904627 from 3/2/16 to 3/4/16

• **consignor:** Mountain View Farm



MVS Maximus' Dream Girl



## MVS Maximus' Dream Girl

11/8/14 • 2914915 • B16 • 76

MVS Maximus

SRS Fortune 500

Shoemakers Miss Emma

CNS Dream On L186

Figgins Dream On Colton

Figgins Double Dream

Purebred

CE	BW	WW	YW	MCE	MILK	MWW	MARB	REA	API
11	1.1	67	97	12	21	54	0.27	0.67	142

• This heifer is a full sister to MVS Anastasia, our Lot 34 bred heifer in last year's Stars and Stripes Sale which sold to Bruce Cuddy of North Carolina for \$7,500. Like her full sister, this bred heifer is a typical Maximus daughter - deep bodied, heavily boned, expansive pelvic area yet smooth and sure on her sound feet and legs. Her yearling frame score was 5.5. She was A/I bred 12-28-2015 to the popular Sim-Angus bull GW Premium Beef 021TS (ASA #2370545), the 11th ranked of the Top 50 Simmental bulls in 2015 based on number of calves sired. The resulting early October calf will be three-quarters Simmental/ one-quarter Angus with projected EPDs of 15.9 CE; -1.1 BW; 156.4 API; and 75.7 TI. Dream Girl is safe in calf with no pasture exposure to other bulls. Tested BVD/PI negative. Conceived, born, raised and bred on this farm under BQA standards.

• **Bred AI** to GW Premium Beef 021TS, ASA#2370545 on 12/28/15

• **consignor:** Mountain View Farm



**34** **WBSF Catalina 32B**  
 1/3/14 • 2888367 • WB32B • 84

**Mr NLC Upgrade U8676**

- Ellingson Legacy M229
- Ms NLC Mojo S6119 B
- BMR Explorer
- GW Miss Muscleman 615P

**WBSF/KBS Catalina 18Y**

Purebred

CE	BW	WW	YW	MCE	MILK	MWW	MARB	REA	API
8	1.9	66	96	5	16	49	0.31	1	122

• My favorite tow year old on the farm that has been doing an outstanding job raising her sharp made heifer calf at side. She possesses everything we look for in a tow year old with moderate stature, fleshing ability, and a near perfect udder structure. Outstanding phenotype in a angular package. Bred back to Duracell for any early calf. Heifer calf at side.

• **Bred AI** to HTP/SVF Duracell, ASA#2392068 on 3/22/16

**34A** 2/9/16 • Heifer • BW: 78 • Tattoo: WB37A

Sire: **KBS Grane 11A**, ASA#Pending

• **consignor:** Ward Bishop

**35** **Simme Valley Butterfly**  
 1/15/14 • 2840838 • Z3B • 71

**Simme Valley Macho As U**

- HC Power Drive 88H
- TripleC Sweet As U JO2OC
- SS Ebonys Grandmaster
- Simme Valley Trinity

**Simme Valley Zenyetta**

Purebred

CE	BW	WW	YW	MCE	MILK	MWW	MARB	REA	API
12	-1.9	45	69	10	22	44	0.05	0.68	126

• Some of you may not be familiar with Butterfly's sire, but his semen is still being sold by SEK. He stamps his daughters with a pretty fronted, picture perfect udder, level hip, tons of rib on great feet & legs. This 2-year old is a prime example of his progeny. She goes back to my donor cow Miss Power Lass on the bottom side. The icing on the cake is her Entourage heifer calf at side. Check the supplement sheet at the sale for her breeding date to LLSF Uprising Z925.

• **Bred AI** to LLSF Uprising Z925, ASA#2646300 date available on sale day.

**35A** 2/8/16 • Heifer • BW: 74 • Tattoo: Z3BD

Sire: **CLO LTS Entourage 72T**, ASA#2392811

• **consignor:** Simme Valley



PVSM Sweet Dreams

**36** **PVSM Sweet Dreams**  
 3/22/14 • 2920182 • B6 • 69

**CLRWTR Shock Force W94C**

- SVF Steel Force S701
- Myers Queen Sazerac P94
- CNS Dream On L186
- Simme Valley Geisha

**PVSM Dream Come True**

Purebred

CE	BW	WW	YW	MCE	MILK	MWW	MARB	REA	API
7	1.4	56	75	6	20	48	0.2	0.73	110

• We love our red cattle, and Sweet Dreams and her bull calf are a pair of our favorites. This Shock Force daughter is out of one our best Dream On cows that has a great calf year after year. Sweetie is homozygous polled an is moderately frames with plenty of capacity and depth of rib. She has been shown and is easy to handle. This first calf heifer is doing a tremendous job with her homozygous polled solid red bull calf at side. With a birth weight of 73lbs, PVSM Crimson Clover will be a very stout calving ease bull. Tested negative BVD-PI.

**36A** 3/11/16 • Bull • BW: 73 • Tattoo: D9

Sire: **GWS Trademark**, ASA#3095048

• **consignor:** Powell's Valley Simmentals

**37** **ESS Aubrie AX7**  
 1/3/13 • 2728302 • AX7 • 88

**STF Dominance T171**

- STF Dominique R170
- MMP Kiss This 37L
- Remington Red Label HR
- Pond View Miss Red Top

**ESS Xylo X7**

Purebred

CE	BW	WW	YW	MCE	MILK	MWW	MARB	REA	API
6	3.1	57	78	10	15	44	-0.04	0.35	93

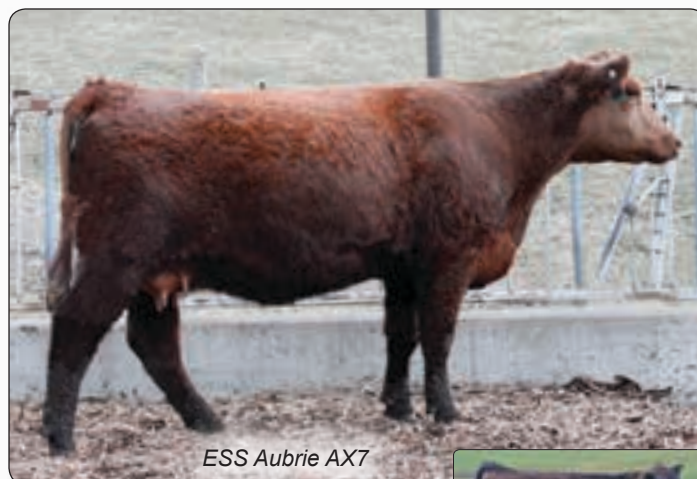
• Extra special red head that has all the fixings to run with the black hided ones. Long feminine fronted, big ribbed, that when asked to go gets out and tracks as good as any. Couple that with an exceptional heifer calf. BVD & PI negative. Breeding information will be updated in supplementary sheet on sale day.

• **Bred AI** to GLS New Direction X184, ASA#2536539 on 3/24/16

**37A** 1/11/16 • Female • BW: 80 • Tattoo: DAX7

Sire: **GLS New Direction X184**, ASA# 2536539

• **consignor:** Elm Side Farm



ESS Aubrie AX7



DAX7- Lot 37A



SSC My Dream 410B



## SSC My Dream 410B

4/10/14 • 2880076 • 410B • 78

CNS Dream On L186

SSC My Girl 31U

Purebred

CE	BW	WW	YW	MCE	MILK	MWW	MARB	REA	API
10	1.9	63	80	7	14	45	0.14	0.88	125

Nichols Legacy G151  
CNS Sheeza Dream K107W  
GWS Ebonys Trademark 6N  
Miss Meyer P439

• My Dream is a female that has a tremendous amount of pedigree and consistency backing her. Being sired by the Immortal CNS Dream On and out of a top Trademark daughter back by a Meyer 734 daughter who is one of the cornerstones of our program. Making My Dream a young female you will want to own. She is a full sister to the red baldy female that won the PA Farm show a couple years ago and then topped this sale at \$9,000 going to Damar farms in WI and is now a donor in their top program. My Dream is a good hipped, nice fronted solid black female that will make you money for years to come. At her side she has a Beautiful black baldy heifer that only adds value to this already impressive and valuable package.

• **Bred AI** to Sandeen Upper Class 2386, ASA#2642004 on 4/9/16

38A

1/25/16 • Heifer • BW:81 • Tattoo: 125D

Sire: TLLC One Eyed Jack, ASA#2668223

• **consignor:** Stewart's Simmental Cattle



Lazy H Perfect Power A21



## Lazy H Perfect Power A21

1/18/13 • 2755386 • A21 • 81

Mr NLC Upgrade U8676

Triple C Perfect Power

Purebred

CE	BW	WW	YW	MCE	MILK	MWW	MARB	REA	API
6	3.1	68	101	5	17	51	0.16	1.21	116

Ellingson Legacy M229  
Ms NLC Mojo S6119 B  
HC Power Drive 88H  
Northland Miss 808H

• "Moose" is a young 3-year-old easy-keeping cow with a great disposition. She is a structurally correct, long bodied female who makes plenty of milk who has been a great addition to our herd. We have her heifer calf from last year as a replacement, being the only reason we are willing to part with her. Moose sells with a solid black bull calf at side sired by HTP/SVF Duracell T52, with potential to be a herd sire and a bright future ahead of him. Breeding information available on sale day.

• **Bred AI** to Breeding info available sale day

39A

1/28/16 • Bull • BW: 88 • Tattoo: HD2 • Sire: HTP SVF Duracell, ASA#2392068

• **consignor:** Hillcrest Farm



CWSF Angie A23



## CWSF Angie A23

4/27/13 • 2829920 • A23

MCMF Red Domain X641

MCMF Pixie U87

Purebred

CE	BW	WW	YW	MCE	MILK	MWW	MARB	REA	API
10	1.7	57	81	10	19	47	0.08	0.48	117

STF Dominance T171  
HPF Betsy T906  
MCMF Savannah Power N11  
Diamond M Ms Pixie J739

• Angie's half sister made their debut to the Stars & Stripes sale in 2014 where they were a big hit. This year's Red Domain daughter will not disappoint any serious breeder. Angie is very feminine, long sided and an excellent milker. When you see her SVF Packing Heat heifer calf you will understand why it is hard to part with this high quality 3 year old. One look at her pedigree and you will see some very strong cow families. They include HPF Betsy T906 (previous Reserve National Champion), Savannah, and Pixie. All of these families have the power to produce herd sires and brood cows of quality, Angie is no exception. OCV, BVD-PI neg, Heterozygous Black and homozygous polled.

• **Bred AI** to Breeding info available sale day

40A

2/28/16 • Heifer • Tattoo: HD2 • Sire: HTP SVF Packin Heat ASA#2536700

• **consignor:** Curry Wagner Simmental Farm





Miss CCF Z445



HPF CMFM Heartbreaker Z323  
- reference calf sire



CLRWTR Zena Z5105F

**41** Miss CCF Z445

1/5/12 • 2837791 • Z445 • 81

**SVF Steel Force S701**

- CNS Dream On L186
- SVF Sheza Beauty L901
- Bon View New Design 1407
- G A R 044 Traveler 2328

**G A R 1407 NewDesign1094**

SimAngus

CE	BW	WW	YW	MCE	MILK	MWW	MARB	REA	API
12	-0.4	56	94	8	17	45	0.48	0.73	134

• I already know what you're thinking... and yes...I promise you, she looks just like the picture. Moderate framed, big bellied, zipper fronted, and sound structured best describe this young rockstar. A pasture full of cows designed like this would not only be fun to look at but would keep you in the business forever. Low maintenance, good uddered, and exceptional feet and legs, Z445 will be a front pasture cow all her life. If you are in search of a new 1/2 blood donor, look no further.

**41A** 2/27/16 • Bull • Tattoo: D051 • Sire: HPF CMFM

Heartbreaker Z323, ASA# 2649611

• consignor: Hudson Pines Farm

**42** CLRWTR Zena Z5105F

1/16/12 • 2664791 • Z5105F • 82

**Harkers Crusader**

- STF Dominance T171
- GCF Miss Caliente
- Lazy H Pathfinder R104
- JF Ebony's Joy 5105R

**Clrwr Joys Desire 5105**

Purebred

CE	BW	WW	YW	MCE	MILK	MWW	MARB	REA	API
6	2.9	48	66	6	18	42	0.04	0.53	101

• Zena is just a young 4yr old cow in the prime of her life. When looking at her pedigree you can't help but notice the Great Caliente cow that has done so much for the STF program among others, the time tested P36D cow from Drake and Lazy H and the immortal Ebony's Joy L123 cow that has done so much for the entire Simmental breed. Zena is sure to impress even the most discriminating breeder. She is a stout hipped, big bodied, nice fronted cow that gets out and moves extremely well all while having that highly desired outcross pedigree. Zena is a cow that unfortunately we did not flush but probably should have. Allow our mistake to be your gain and take Zena home and reap the rewards as I'm sure you will. Her baldy One Eyed Jack heifer only adds icing to the cake.

**42A** 3/21/16 • Heifer • Tattoo: 321D • Sire: One Eyed Jack, ASA# 2668223

• consignor: Stewart's Simmental Cattle



### Attractions...

Mountain View Farm is located about one hour from Hershey, PA – Chocolate Town USA. Tours of the factory and surrounding attractions are open year around.



PVSM Jubilee C19 - Lot 44A



ESS Yodeler Y4



## Simme Valley Ziva

2/21/12 • 2631921 • 42Z • 85

GCF Mr Amigo

CNS Dream On L186  
GCF Miss Mt-Zel  
WS Beef Maker R13  
SS Black Quarta M5

Simme Valley Xuberant

Purebred

CE	BW	WW	YW	MCE	MILK	MWW	MARB	REA	API
15	-1.2	61	79	12	5	36	0.26	0.96	148

- Everyone that knows me, should know that I don't care if a cow is red, black or purple polka-dotted - as long as they are GREAT. This is a great cow that happens to be red. She is a big bodied moderate sized brood cow bred to calve 10-15-16 to Shock Force. Ziva's heifer calf is halter broke & should be exciting to show.
- **Bred AI** to CLRWTR Shock Force W94C, ASA#2496698 on 1/5/16

**43A** 11/12/15 • Heifer • Tattoo: Z42C • Sire: WHF/PRS Game On 001Y, ASA# 2637352

- **consignor:** Simme Valley



## PVSM New Beginning

4/28/12 • 2654934 • Z14 • 78

DUFF New Edition 6108

O C C Genesis 872G  
O C C Dixie Erica 814G  
CNS Dream On L186  
PVSM Powerline Madison

PVSM Honeysuckle

SimAngus

CE	BW	WW	YW	MCE	MILK	MWW	MARB	REA	API
7	2.5	62	95	-4.4	18	50	0.3	0.64	89

- PVSM New Beginning may not be the biggest cow in the field, but she makes up for that with efficiency and quality. This young cow is structurally correct, has great spring of rib, and is extremely clean fronted. New Beginning is AI bred to CSCX Bandwagon and is due 8/26/16. Her heifer calf, PVSM Jubilee, is weaned and will be split off the sale. Jubilee is halter broken and has a disposition perfect for a first time showman. Both are heterozygous black, homozygous polled and tested negative for BVD-PI.

- **Bred AI** to CSCX Bandwagon 513A, ASA#2757819 on 11/13/15

**44A** PVSM Jubilee C19 • 8/17/15 • Heifer • Tattoo: C19

Sire: GWS Ebony's Trademark 6N, ASA# 2231696

- **consignor:** Powell's Valley Simmentals



## ESS Yodeler Y4

3/3/11 • 2580782 • Y4 • 97

SS Ebony's Grandmaster

PVF-BF BF26 Black Joker  
SOSF Ebony's Joy L-123  
GW Lucky Dice 187H  
YC Miss Bik B80

HPF Ms Maya M082

Purebred

CE	BW	WW	YW	MCE	MILK	MWW	MARB	REA	API
9	0.6	55	80	8	21	49	0.21	0.98	147

- True donor prospect in the making. Long fronted, excellent uddered, big ribbed, female that moves out on a big foot with a long smooth stride. Comes with a stylish heifer calf that is sure to follow in mamas footsteps. BVD & PI negative. Breeding information will be updated in supplementary sheet on sale day.

**45A** 3/2/16 • Heifer • Tattoo: DY4 • Sire: SVF NJC Built Right, ASA# 2225381

- **consignor:** Elm Side Farm





CWSF Zena Z21



NJC SVF Love Me Don't U - reference dam



## CWSF Zena Z21

6/5/12 • 2951687 • Z21 • 75

MCMF Rock Solid U77

MCMF Midnight T30

MCMF Keystone M62  
Kapps Rock Solid K139  
BF 0K34 Daytona  
MCMF Savannah N38

Purebred

CE	BW	WW	YW	MCE	MILK	MWW	MARB	REA	API
8	1.4	56	77	8	24	52	-0.02	0.63	107

• Zena is the product of time tested and proven Midwestern genetics. She brings all of this together in a moderate framed, stylish, attractive, sound structured package. Zena's quality starts at ground level through good foot shape and size to her very good udder shape and size to her very good udder shape and size. A long sided, bold sprung female that will not disappoint in her ability to raise one of your best calves year after year. She sports a nicely balanced set of EPDs with well above average milk. She sells with bull calf at side sired by STF Shocking Dream born 3/24/16. OCV, BVD-PI neg. Homozygous black and homozygous polled. Rebreding info to be announced.

**46A** 3/24/16 • Bull • Sire: STF Shocking Dream, ASA# 2335795

• **consignor:** Curry Wagner Simmental Farm



## HPF Love Me Don't U Y514

1/6/11 • 2585032 • Y514 • 78

SVF Steel Force S701

NJC SVF Love Me Don't U

CNS Dream On L186  
SVF Sheza Beauty L901  
PVF-BF BF26 Black Joker  
NJC Ebony Antoinette

Purebred

CE	BW	WW	YW	MCE	MILK	MWW	MARB	REA	API
7	1.7	57	85	8	21	49	0	0.61	134

• We always try to pick out some good, functional, profitable cows to bring to Gettysburg that we feel we have not been using quite to their full potential in hopes that they find a new owner that will. Y514 may have as much untapped potential as any we have ever brought. A direct daughter of the famous "Love Me Don't U L32", Y514 has the genetics and the phenotype to generate big income. We are only able to flush so many cows in a year and get so many embryos transferred and Y514's timing has just never worked out for us. But on May 7th, that will be our mistake made and yours to take advantage of. Freshly calved in March, we plan to leave Y514 open, in hope that her new owner decides to give her a crack at the donor life. We believe you will be extremely pleased with what she can accomplish.

**47A** 3/9/16 • Bull • BW: 70 • Tattoo: D061 • Sire: HPF Lutton Z305, ASA# 2640538

• **consignor:** Hudson Pines Farm



157W daughter



157W daughter



157W daughter



## STF Opal 157W

1/5/09 • 2481668 • 157W • 90

STF Too Red G64

STF Domino TN37

MV Red Light 406  
ER Miss Too Red 13-D  
STF Dominique R170  
STF Miss N37L

Purebred

CE	BW	WW	YW	MCE	MILK	MWW	MARB	REA	API
7	3	55	80	9	24	52	0.06	0.45	100

• Even as I write this footnote, I am second guessing letting this cow leave the farm. In terms of hard working, efficient, hassle free production cows, 157W may be as good as we have. With the heifer calf at her side being number 6 raised, 157W has put 4 natural heifer calves in The Living Legacy sales, averaging over \$8,000 per heifer! And the only bull she produced, a Denver Pen Bull and Genetic Legacy Bull Sale member bringing \$9,000! The HeartBreaker heifer calf at side has as much look and style to any she as produced at this stage, and it is almost a certainty she could pay for the pair and more this fall! 157W has been Aid back to our new purebred bull, TKCC Classified, and that mating is sure to be lights out.

• **Bred AI** to TKCC Classified 106C, ASA#3028710 on

**48A** 2/29/16 • Heifer • BW: 75 • Tattoo: D051

Sire: **CMFM Heartbreaker**, ASA# 2649611

• **consignor:** Hudson Pines Farm



## JS Dance With Me 10W

3/10/09 • 2488437 • 10W • 80

WS Independence T18

Triple C Miss Power K186

CNS Dream On L186  
Nichols Beauty G84  
HC Power Drive 88H  
Burns Cow F187A

Purebred

CE	BW	WW	YW	MCE	MILK	MWW	MARB	REA	API
12	2.1	57	85	13	26	55	0.02	0.87	121

• I purchased Dance With Me from JS Simmentals as an open heifer in the 2009 Grindstone Creek sale. Since then she has turned in to an outstanding cow that has produced some outstanding offspring with the most notable being KBS Grande who has been siring some outstanding calves. She is a complete structurally sound cow that seems to do everything right year after year. She's a direct daughter from the JS donor Triple C Miss Power who has produced many high sellers and show ring winners. Sells with an high performing Upgrade son at side. Bred back to the popular Yardley High Regard. Strong genetic values pair has excellent disposition.

• **Bred AI** to Yardley High Regard, ASA#2522822 on 3/13/16

**49A** 2/1/16 • Bull • BW: 89 • Tattoo: **KB 25D LE**

Sire: **Mr NLC Upgrade**, ASA#Pending

• **consignor:** Kevin Bishop





## SS Spalding Lucy U8019

2/29/08 • 2464910 • U8019 • 73

SVF/NJC Mo Better M217

S C C Lucy 2099

STF Mr Momentum H508  
NJC SVF Antoinette K205  
GDAR SVF Traveler 234D  
Lucy 7019 B C A R

SimAngus

CE	BW	WW	YW	MCE	MILK	MWW	MARB	REA	API
7	0.9	51	88	6	9	35	0.26	0.51	101

• This beautiful blaze faced 1/2 blood powerhouse is as massive and well designed as you could draw one. She has raised several daughters that have made the cut for The Living Legacy sales and a bull that was in the top end of our bull sale offering in 2012. With her do-ability and fault-free feet and legs, U8019 will be a top end producing female for quite some time. 1/2 bloods designed like this are what the cow business is all about.

- **Bred AI** to HPF Heartbreaker Z323, ASA#2649611 due to calve by sale day
- **consignor:** Hudson Pines Farm



SS Spalding Lucy U8019



## Hillcrest Miss Zena

10/26/12 • 2687143 • HZ23 • 86

HTP SVF In Dew Time

GASC/MVS Miss Ormy T107

CNS Dream On L186  
HTP SVF Honeydew  
MVS General Reynolds  
MVS Beautys Rose

Purebred

CE	BW	WW	YW	MCE	MILK	MWW	MARB	REA	API
11	1.1	59	80	11	18	47	0.28	0.58	130

• Miss Zena is all about being a cow and producing, with one calf already under her belt. She is a structurally correct, sound in her making, big ribbed type of female. Her dam, MVS Ormy T107, who we purchased in the Stars and Stripes several years ago has given us many high performance females and has calved every consecutive year in the same month. With above average CE and BW EPDs and an API index of 130.3, Zena is sure to make a positive addition with proven potential to be a money making cow. AI bred to the legendary SS Goldmine L42 on 10/2/15. Safe in Calf, due 7/12/16. BQA Certified Herd. BVD-PI Negative.

- **Bred AI** to SS Goldmine L42, ASA#2106737 on 10/2/15. Due 7/12/16
- **consignor:** Hillcrest Farm



Hillcrest Miss Zena

### Attractions...

Mountain View Farm is an hour and a half north of, Washington D.C. and Annapolis and Baltimore MD. Take time during your stay here to visit our Nation's Capital and the various museums and galleries there. The Baltimore inner-harbor is a great place to visit and dine-out





SVJ Cowtown A1111

## SVJ Cowtown A1111

52

5/15/13 • 2818291 • A1111 • 76

CLRWTR Shock Force W94C

SVF Steel Force S701

Myers Queen Sazerac P94

GWS Ebonys Trademark 6N

SVJ Burning Delight U141

Triple C Burn It Up N34L

Purebred

CE	BW	WW	YW	MCE	MILK	MWW	MARB	REA	API
6	2	54	74	1	23	50	0.19	0.91	100

- This moderate size, great disposition, perfect structured, breeding and show bull has been a pleasure! Doug ask us for a sale feature and we took it to another level. He was Grand Champion at Ft Worth, was first in class at all the major shows. Myers Queen Sazerac and Steel Force matched work with our U141 Burn It Up female. U141 was the top selling female in Denver and sold for \$25,000 1/2 interest. Cowtown first calf crop is a site to behold! He collects well and breeds well. His calves are up and nursing! Very aggressive calves! Sells in his entirety! Don't miss him sale day!

• **consignor:** SVJ Farm

## SVJ Burning Delight x CLRWTR Shock Force

52A

3 Embryos Guaranteeing 1 Pregnancy

CLRWTR Shock Force W94C

SVF Steel Force S701

Myers Queen Sazerac P94

GWS Ebonys Trademark 6N

SVJ Burning Delight U141

Triple C Burn It Up N34L

Embryos

CE	BW	WW	YW	MCE	MILK	MWW	MARB	REA	API
6	2	54	74	1	23	50	0.19	0.91	100

- Selling 3 embryos guaranteeing 1 pregnancy if work is performed by a certified embryologist.

- Selling full sib embryos to SVJ Cowtown A1111 full in the sale. U141 x Sock Force this is possibility one of our finest mating developed on our farm. We told Doug we would share the best of the best! Selling 3 ET full sibs to our sale feature. Selling 3 ET's to the Manifest bull. The Nichols program has had a great influence on the Simmental breed and has helped our program move to a higher level. U141 was the top selling female in Denver at \$25,000 1/2 interest and her sister U142 was the top seller at the North American at \$19,000 1/2 interest. It is almost impossible to repeat this feat! If you believe in genetics don't miss these lots!

• **consignor:** SVJ Farm



SVJ Burning Delight - ref. dam



CLRWTR Shock Force W94C -  
reference sire





## MVS Atticus

1/15/15 • 2951192 • C2 • 84

CLO Captain America 704Y

CNS Pays To Dream T759

War Diva M704

MVS Maximus

PVSM All Beef Patty

MVS Ariana

Purebred

CE	BW	WW	YW	MCE	MILK	MWW	MARB	REA	API
11	1.7	58	87	10	20	49	0.16	0.74	135

- A long-yearling bull sixteen months old at time of sale. Descends from two very powerful and recognized bulls in the breed. A great investment for the future in breeding your heifers this year and your cow herd the following spring. Great Calving Ease and Birthweight EPDs coupled with a top 20% rating for All Purpose Index. Yearling frame score was 5.5. Thick in stature with great legs and feet to enable him to perform his duties. He is our pick from a great peer group to represent us at this sale. Exceptionally well mannered, another of Barbara's pets. He will give you no trouble and will give you great production. Semen tested as highly fertile. Virgin bull. Tested BVD/PI negative. Conceived, born and raised on this farm under BQA standards.

- **consignor:** Mountain View Farm



MVS Atticus



## MVS Maximus' Dream Boy

2/4/15 • 2951190 • C3 • 84

MVS Maximus

SRS Fortune 500

Shoemakers Miss Emma

CNS Dream On L186

H&B Miss No Limit 706J

ANDJ Miss Jays Dream

Purebred

CE	BW	WW	YW	MCE	MILK	MWW	MARB	REA	API
11	1.5	73	102	12	22	59	0.21	0.64	137

- Maternal Grand Sire is in the ASA Hall of Fame. A long-yearling bull fifteen months old at time of sale. Follows in the footsteps of his proven father. Known here as "Little Max" as he is much like his father was at the same age. Top 10% EPDs for Weaning Weight and Terminal Index. Top 15% EPDs for Yearling Weight and All Purpose Index EPDs. Like our other bull in this sale, he is a great investment for the future in breeding your heifers this year and your cow herd the following spring. Yearling frame score was 6.0. He is another of our picks from a great peer group to represent us at this sale. Exceptionally well mannered. He is respectful of his human handlers and will give you great production. Semen tested as highly fertile. Virgin Bull. Tested BVD/PI negative. Conceived, born and raised on this farm under BQA standards.

- **consignor:** Mountain View Farm



MVS Maximus' Dream Boy





PVSM Mooving Force



## PVSM Mooving Force

3/10/15 • 2996905 • C7 • 69

CLRWTR Shock Force W94C

PVSM Miss Mooney

SVF Steel Force S701

Myers Queen Sazerac P94

CNS Dream On L186

PVSM Mooney B EN

### Purebred

CE	BW	WW	YW	MCE	MILK	MWW	MARB	REA	API
7	2	57	77	5	18	47	0.19	0.8	107

- If you are looking for a purebred Simmental bull that truly represents what a black Simmental bull should be, here he is. PVSM Mooving Force, aka Peantu Butter, has the thickness, depth of rib, huge hindquarter, and disposition that, unfortunately, have been lost in some of the Simmentals of today. He is halter broke, moderately framed, very smoothed shouldered, and has super neck extension. With an actual birth weight of 701 lbs, PVSM Mooving Force is a homozygous polled and heterozygous black calving ease bull that will work in any herd. Tested negative BVD-PI.

- **consignor:** Powell's Valley Simmentals

# DVAuction

## Broadcasting Real-Time Auctions

Never Miss An Auction Again!  
Watch & Bid online for FREE!

**Visit [www.DVAuction.com](http://www.DVAuction.com)  
and Register Today!**

For General Questions Please Contact Our Office:  
(402) 316-5460 or [support@dvauction.com](mailto:support@dvauction.com)



## *Complimentary guided tour of the Gettysburg Battlefield on Friday, May 6<sup>th</sup>*



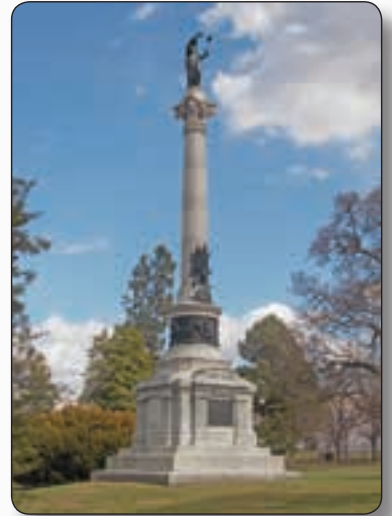
GETTYSBURG. A name widely known in U.S. and World history. In the third year of the American Civil War, 90,000 Northern soldiers, 70,000 Southern soldiers, 72,000 horses and mules, over 600 cannon, met in mortal combat in three days of battle. This was the largest battle ever conducted on the North American continent. The battle was conducted over 6,000 acres of approximately 38 separate farms surrounding the town of Gettysburg.

Mountain View Farm, host farm for the Gettysburg Stars and Stripes Sale, sits less than two miles from the battlefield. The Stars and Stripes Sales Group is pleased to offer a complimentary tour of the Gettysburg Battlefield as part of this year's sale.



The tour leader this year is Dr. Carol Reardon of Penn State University. Carol is also co-owner of two of the producing dams in the Mountain View Farm herd. Carol and Tom Vossler are both military historians who specialize in history of the American Civil War. In 2013 their multiple award winning book on the Battle at Gettysburg entitled *A Field Guide to Gettysburg* was published by the University of North Carolina Press. The tour Carol will lead will include a lot of what is in their book in regard to the farms over which the battle is fought. The tour will also include visits to the state memorials of Virginia, North Carolina, Maryland, Pennsylvania and New York.

To reserve your space(s) on this popular battlefield tour, call Tom or Barbara Vossler at 717-337-1615. If no answer to your call, leave a voice mail with your name and headcount for the tour. The tour will depart the sale barn on Friday, May 6th at 1:00 pm and will last about two and one-half hours giving you plenty of time to view the cattle prior to the social hour at the farm house at 5:00 pm.



# ASA Sale Terms & Conditions ...

**BIDDING AND APPLICABLE LAW:** All cattle listed in this offering comply with prevailing sale terms and conditions as set forth by the laws of the state wherein the sale is conducted. There are no warranties, expressed or implied, by either the auctioneer or consignor, except as set forth herein, as to the merchantability of fitness for any particular purpose of any animal offered in this sale. The right to bid or the right to reject the final bid, if done before the hammer falls, is reserved for all sellers unless otherwise announced from the sale block or as prohibited by law in the state wherein the sale is being conducted.

**ANNOUNCEMENTS:** Any change of information other than in the catalog will be announced from the auction block and such announcements shall take precedence over printed material. All statements made from the auction block or those made by the seller (in private treaty) must be documented by seller if requested by the buyer at time of sale.

**TERMS:** Terms of sale are cash unless satisfactory credit arrangements have been made with the seller previous to the sale of any animal so affected.

**PURCHASER'S RISK:** Each animal becomes the property of and therefore is also the risk of the purchaser as soon as it is sold; except it shall be the obligation of the seller to see that animals are fed and cared for free of charge to purchaser, until loaded for shipment or until the expiration of twenty-four (24) hours after the sale, whichever occurs first.

## HEALTH REQUIREMENTS:

1. All cattle entered for sale must meet the health regulations of the state in which they are sold. All other agreements regarding the health of the animal will be between the buyer and seller and should be documented in writing.
2. If sale cattle are returned to the seller for an adjustment, they must meet the health requirements of the state they are returned to.

**CERTIFICATE OF REGISTRY:** Each animal which is catalogued, offered and sold as a registered animal shall have a certificate of registry available at time of sale. When an animal is sold as "eligible for registry" or "registry applied for", the seller shall be responsible for obtaining the certificate of registry and for the proper transfer of the certificate to the purchaser including full payment of transfer fees.

**IDENTIFICATION:** Each animal at time of sale must have a readable tattoo or brand corresponding to that shown on the certificate of registration.

**AUTHENTICITY OF PEDIGREE:** When an animal, through parental validation, is determined to have an ancestry other than that reported on the registration certificate, the buyer shall be entitled to a refund of the purchase price from the seller upon return of the animal to the farm of the seller at the seller's expense. The animal in question, at the buyer's option, may be exchanged for another animal of equal value, or if agreeable with the buyer, the seller may have the certificate returned to the buyer. Any adjustment provided herein, if selected, shall absolve the seller from further liability for authenticity of pedigree to the buyer.

## BREEDING GUARANTEES AND DEFINITIONS:

1. Females are guaranteed to be breeders, with the exception of:
  - a) Female calves sold at side of dam
  - b) Injury or disease occurring to the animal after time of sale
  - c) Gross negligence or willful misconduct on the part of the purchaser
  - d) Females used in ovum transplant after time of sale
  - e) Cows sold with calf at side or a female that calves after sale to a breeding prior to the date of sale
2. Bulls are guaranteed to be breeders (definition as the ability to settle healthy cows by the time the bull is 18 months of age) with the exception of:
  - a) Bull calves sold at side of dam
  - b) Injury or disease occurring to the animal after time of sale
  - c) Gross negligence or willful misconduct on the part of the purchaser
  - d) Bulls shown competitively after sale
3. Any guarantees with respect to the ability to freeze semen shall be made by separate agreement between buyer and seller.
4. Safe in calf females are females that have been diagnosed pregnant by a competent veterinarian, and are pregnant at time of sale.
5. A bred female is a female known to have been served by a bull either by natural breeding or artificial insemination, but it does not necessarily mean that the female is safe in calf to that service.
6. A pasture bred female is a female that has been pastured with a designated bull and has been exposed for the time stated, but it does not necessarily mean that this female is safe in calf to that bull.
7. An open female is a non-pregnant animal.
8. Calves sold off their dams (split pairs) shall carry the full breeding guarantee.

**PRIVILEGE OF PURCHASER TO EXAMINE:** The purchaser of a female animal may have her examined within twenty-four (24) hours after the fall of the hammer and prior to removal from sale premises. The pregnancy status of breeding status of an female so examined, when found not to be as represented at the time of sale, is cause for the female to be returned to the seller as unsold.

## EMBRYO TRANSFER:

1. Sellers should provide upon request a complete history of embryo transfer activity for any female offered for sale.

2. Withholding information on the existence of frozen embryos at the time of sale would be considered an unethical practice.

## HORNED-SCURRED-POLLED: DEFINITIONS:

1. **HORNED** — An animal with a horn growth affixed to the skull that has or has not been removed.
2. **POLLED/SCURRED** — An animal with rudimentary horn growth that will not develop into a horn. The rudimentary horn growth may or may not become affixed to the skull at an older age.
3. **POLLED** — An animal with absence of horn growth. (An animal can have scurs and still be genetically polled.)
4. **SMOOTH POLLED** — A smooth-polled individual has no scurs and does not develop scurs later in life.

## GUARANTEES:

1. If an animal is sold as polled or polled/scurred and proves to be horned, the seller shall be obligated to refund the purchase price upon return of the animal to the farm of the seller at the expense of the seller or may be exchanged for a polled animal of equal value whichever is acceptable to the buyer. The buyer has thirty (30) days from date of sale to notify the seller that an adjustment is in order.
2. If an animal is sold as smooth-polled and proves to be scurred, the seller shall be obligated to refund the price upon return of the animal to the farm of the seller at the expense of the seller or at the buyer's option shall be exchanged for a smooth-polled animal of equal value.
3. If an animal is sold as polled and develops scurs, the seller will not be obligated to make any adjustment as a scurred animal is considered polled.
4. If an animal is sold as polled and has scurs, it shall be so announced at the time of sale that the animal has scurs. If it is not announced and the buyer finds before the animal leaves the sale premises that the animal has scurs, the buyer must notify the seller of the findings. The seller shall then be obligated to refund the purchase price.

## OPTIONS AND PRIVILEGES OF RETURN OR ADJUSTMENT:

The following adjustments do not preclude the right of the buyer and seller to mutually agree upon other terms and conditions for settlement of any dispute.

1. All claims for adjustment or refund must be made in writing either six (6) months from the date of sale or no later than when the animal reaches 24 months of age whichever occurs later, with the exception of claims involving misrepresentation of service sire or as otherwise provided herein.
  2. In the event an animal is claimed to be a nonbreeder, the animal may be returned to the farm of the seller, at the buyer's expense, if in good physical condition, and the return is in compliance with the health requirements of the seller's state. The seller shall be entitled to a six (6) month trial period following the return of the animal in which to prove the animal is a breeder. If at the end of six (6) months the seller is unable to prove the animal is a breeder, the seller shall, at the option of buyer, replace the animal with another equal value or refund the purchase price.
- Either option shall be deemed full satisfaction and settlement.
3. If a female is sold as "safe in calf" to a given sire or sires on a specified date or dates and proves not to be as represented, the buyer is entitled to a refund of the purchase price from the seller upon return of the animal and resulting progeny thereof to the farm of the seller at the seller's expense.
  4. If a female is sold as "open" and proves to be with calf at time of sale and examined pregnant within sixty (60) days after sale, the buyer may return the animal to the farm of the seller prior to calving for a refund of the full purchase price or for another animal of equal value, whichever acceptable to the buyer. It shall be the obligation of the seller to bear any expenses incurred for transportation of the animal in question to the farm of the seller.

**GENETIC TESTING AND TraitTrac STATUS:** Sellers must identify the TraitTrac status and the results of any qualitative genetic testing performed on any animals or genetic material offered for sale. The ASA considers it an unethical practice to misrepresent or fail to disclose the TraitTrac status or qualitative genetic test results of any animal or genetic material.

**DISCLOSURE OF MATERIAL INFORMATION:** Sellers must disclose all material information concerning any animal or genetic material offered for sale. For the purposes of these Sale Terms and Conditions, "Material Information" is defined as any information which would be likely to affect the value of the animal or genetic material if the information were known to the public.

Material Information includes, but is not limited to, information related to genetic tests, blood tests, ultrasound pregnancy results, disease tests, pregnancy and fertility test results, information related to the sex and age of in utero calves or embryos, and information related to the fertilization status of in utero calves, including whether the calf was conceived via artificial insemination or natural service. The ASA considers it an unethical practice to misrepresent or fail to disclose any Material Information concerning an animal or genetic material offered for sale.

**LIMITATIONS OF OBLIGATIONS:** These sale terms and conditions constitute a binding legal obligation between the buyer and seller of any animal or genetic material sold under these terms and conditions. However, the ASA, its directors, officers, employees and agents do not assume any obligation, legal or otherwise, to enforce the sale terms and conditions agreed to between buyer and seller.



*Notes*

catalog design by...  
**BARBOUR**  
marketing solutions, LLC

**PASMA**

**Pennsylvania  
Simmental  
Association**

for more information  
or to join visit  
our website at...

**[www.pasimmental.com](http://www.pasimmental.com)**



**YOUR MASTER EAST COAST  
SULLIVAN DEALER  
AND FEED DEALER**

**1-800-649-SHOW • GETTYSBURG, PA**



DP Sales Management, LLC  
Doug & Debbie Parke • 859.421.6100  
Drew & Holli Hatmaker • 423.506.8844  
153 Bourbon Hills • Paris KY 40361  
859.987.5758 • pleent@aol.com

PRESORTED  
FIRST CLASS MAIL  
US POSTAGE PAID  
GARDNER, KS  
PERMIT NO. 35

**FIRST CLASS**

**TIME DATED MATERIAL**

