

Pennsylvania Simmental Association



2016 Membership
Directory



© Annie Duncan

Hudson Pines Farm



Cream Soda R56



Empriss 302Y



Queen Sazerac P94



Victoria W02

*Watch for the influence of these powerful donors and
take advantage of the opportunity to acquire their genetics
Sunday, November 15th, 2015 at The Living Legacy XI.
Sale will be held at Reality Farms just outside of Louisville, KY.*



David Rockefeller, Owner • Miranda Kaiser, Owner/Executive Director
John Walston, General Manager • 518.851.2000
Ryan Haefner, Farm Manager • 815.499.0522
Jeff Queckboerner, Herdsman
Tyler Babbs & Ryan Long, Show and Sale Cattle

www.hudsonpinesfarm.com



MESSICK FARMS

BREED LEADING GENETICS FOR 2015

"MF CANDY GIRL A790"



Division Champion 2015 Junior Simmental Show
PA State Farm Show

We bred this powerful female to be a cornerstone
of our new SimAngus program.
Congratulations Lana on all your success!

For more like her, give us a call!

POWERFUL BULLS

We are selling another great set of
Simmental and SimAngus bulls
at the 2015 PA Bull Test Sale!
March 27, 2015

- Invest in the Best -
Purebred Simmental and SimAngus

Call us today!



Mylin, Joe, Sally and Caitlin
2835 Schoolhouse Road, Middletown, PA 17057
(717) 985-1021 or messick85@comcast.net



OUR STARS & STRIPES SALE CONSIGNMENTS

GETTYSBURG, PA ★ MAY 7, 2016

SELLS WITH CALF AT SIDE



PVSM Sweet Dreams

ASA #2920182

Born: 3-22-14

**CLRWTR Shock
Force W94C**

X

**PVSM Freedom
to Dream**

ASA #2996905

Born: 3-10-15

**CLRWTR Shock
Force W94C**

X

**PVSM
Miss Mooey**



PVSM Mooving Force

ALSO CONSIGNING FALL COW/CALF PAIR:

PVSM New Beginning Born: 4-28-12 ASA #2654934

½ Simmental ½ Angus • Duff New Edition x PVSM Honeysuckle

PVSM Jubilee Born: 8-17-15 ASA #Pending

¾ Simmental ¼ Angus • Sired by GWS Ebony's Trademark

THE SMILE SAYS
IT ALL....



PERFORMANCE WHEN IT COUNTS!

*Ryan Lehman with his Reserve Champion Steer,
PVSM Batman, at the 2015 Gratz Fair.*

POWELL'S VALLEY SIMMENTALS

*We produce gentle, functional cattle that perform as well
in the pasture as they do in the show ring.*

LAURIE MEYERS

470 MILLION DOLLAR ROAD, HALIFAX, PA 17032

PHONE: 717-350-2516 EMAIL: LAURIE@PVSIMM.COM

*Stop in or call anytime -- we love to talk cattle.
Please visit our website, www.pvsimm.com!*

Table of Contents

Table of Contents	4
Index to Advertisers	4
President's Message	6
PSA Officers and Directors	8
Upcoming Events	9
Simmental History	10-11
PSA Membership Listing–By Last Name	13-38
PSA Application for Membership	39
PSA Membership Listing–Cross-Referenced by Farm Name	40-41
Frame Score Chart.....	43
Gestation Table.....	44
Map and Index of Member Farm Locations	48-49
Rules and By–Laws.....	50-52
PSA Award Recipients	54
PJSA Officers	55
PJSA Application for Membership.....	55
PJSA Advisors	55
PJSA Royalty	60

Index to Advertisers

ABS.....	47	JEH Simmentals.....	12
Allegheny Meadows	15	Keystone Cattle Service	9
American Simmental Association...11		Ladybug Farm.....	15
Cargill.....	37	Leachman Cattle	5
Catskill Cattle.....	42	Messick Farms	1
Center for Beef Excellence	31	Mountain View Simmental..Back Cover	
Cowbuyer	45	Porter's Lake Simmental Ranch ..	19
Curry Wagner Simmentals	64	Powell's Valley Simmentals.....	2-3
Don Fair Nutritional Consulting ..	61	Select Sires.....	25
Double RD Farm.....	15	Serenity Hills Farm.....	21
E&R Farms	27	Shoemaker's Simmentals .. Ins. Back	
Eastern States Livestock Systems	35	Simme Valley Ranch.....	63
Eby	46	Stein-Way Equipment	62
Elk County Simmentals	17	Ste-Wan Farms	53
Elm Side Farm	23	Stewart's Simmental Cattle.....	32-33
EMM Sales & Service	59	Stony Creek Simmentals.....	17
Frey's Livestock Supply	57	SVJ Farm	7
Frosty Springs Farm.....	58	Wilkins and Son Equipment	60
Gallagher Printing.....	56	Woodview Simmental Farm.....	17
Genetic Visions	29	Zimmerman's Custom Freezing...27	
Hudson Pines	Inside Front Cover		

Our special thanks to these advertisers for making this directory possible.

Please visit the PSA website, www.pasimmental.com

LEADERS IN Efficiency, Profit, & Phenotype!

TCA Visionary 158



Leachman \$Profit™

\$16,921

\$Ranch \$57 • \$Feeder \$132

Feed:Gain Feed Intake
-0.72 -184

S A F Connection
Sire: SydGen C C & 7
SydGen Forever Lady 4087
S A V 5175 Bando 0699
Dam: T C A Treasure 0699 601
Sweetwater Treasure 73M

Born: 3/14/11
Accuracy: MID
Calving Ease: ★★★★★
Disposition: 5
Homozygous Polled
Homozygous Black

AAA#: 16972676 • DDF

\$35/unit

50+ units \$30

As low as \$25 at 100+ Units
100+ units-Free Shipping!

AAA EPDs as of 12/1/15	CED	BW	WW	YW	DMI	YH	SC	Doc	HP	CEM	Milk	MW
	+13	-2.0	+55	+102	+27	+7	+1.00	+27	+15.2	+12	+34	+37
	MH	\$EN	CW	Marb	RE	Fat	\$W	\$F	\$G	\$QG	SYG	\$B
	+7	-28.25	+38	+76	+1.22	+0.15	+69.30	+63.87	+47.20	+35.70	+11.50	+143.04

Leachman Prophet J030Z



Leachman \$Profit™

\$16,342

\$Ranch \$53 • \$Feeder \$130

Feed:Gain Feed Intake
-0.61 -113

Hooks Shear Force 38K
Sire: Hooks Trinity 9T
Hooks Pearl 22-P
Dr J Analyst M250
Dam: LCoC Isabel UG390
Eagle 1531 Isabel 2221

Born: 2/10/12
Accuracy: MID
Calving Ease:
Disposition: 4
Homozygous Polled
Homozygous Black

ASA#: 2698309 • 62AN-38SM

\$35/unit

50+ units \$30

As low as \$25 at 100+ Units
100+ units-Free Shipping!

ASA EPDs as of 12/1/15	CE	BW	WW	YW	MCE	Milk	MWW	Doc	CW	YG	Marb	Fat	REA	Shr	API	TI
	12.8	-0.6	80.6	125.9	7.5	15.4	55.7	12.0	43.7	-0.28	0.68	-0.020	1.13		148.6	89.3



Contact us for a complete Herd Sire catalog

(970) 568-3983 • www.leachman.com

Kurt Schenkel

Cell: 330-234-4576

Email: kurt@leachman.com



A Message from the President of the Pennsylvania Simmental Association

Dear Simmental Friends,

How will cattle prices fare in 2016? That is a question that will be speculated on by many and definitively answered by none. In a world of uncertainties, we need to concentrate on what we can control—and for cattlemen, that is the cattle we breed. Good, sound, easy-keeping cows that raise a great calf every year are the foundation on which we build our programs. With the Simmental breed excelling in many desirable traits, it offers flexibility to fit each producer's individual needs, and that is why it is the practical choice of breeders around the country. The American Simmental Association, whose slogan is "Profit through Science," offers numerous valuable resources to assist us in making breeding decisions. Genetically enhanced EPDs, planned matings, genetic trends, and TraitTrac are just a few that are available to us. Old Timers around here used to say "You can't farm from the house" and that certainly rings true about breeding cattle. Despite all the science and technology available, the most important thing we can do is to walk out in the pasture and actually LOOK at our cattle. What may look good on paper, may not work in the herd.

Here in Pennsylvania, our sales—the Spring into Excellence Sale and the Pennsylvania Fall Classic Sale—continue to have strong support from both consignors and buyers. The 2015 Pennsylvania Fall Classic sale average was \$3248 on 61 lots.

You are all invited to the Pennsylvania Simmental Association Field Day, held July 9th, 2016 at the farm of Curry Wagner, Hummelstown, PA. Hope to see you there.

Sincerely,
Laurie Meyers

SVJ FARM AND D&D CATTLE CO.

FOUNDATION FEMALES...



SVJ STYLISH ONE



ADKINS/LAZYH BLK STAR X702



SVJ CNS QUEEN ME



TRIPLE C LIZZIE



WAR SHEZA DANDY



TIGES ZANY

GREAT COW FAMILIES CREATE
PROGENY LIKE THESE CHAMPION FEMALES



SVJ LIZZIES DREAM
RESERVE CHAMPION JUNIOR SHOW 2013 NWSS
HIGH SELLING OPEN HEIFER IN OUR SALE



SVJ SHE'S THE DREAM
RESERVE CHAMPION OPEN SHOW 2013 NWSS
SOLD PRIVATELY OFF THE FARM

VALERIE MANKEY & DUANE SNEE
456 RINGLAND RIDGE ROAD :: AMITY, PA 15311
VALERIE CELL: 724-554-0446 :: HOME: 724-263-1725
EMAIL: VALERIEMANKEY@EARTHLINK.NET



TAD FRANCIS
HERD CONSULTANT
PHONE: 860-478-3416

Pennsylvania Simmental Association

Officers

Laurie Meyers, President

470 Million Dollar Road
Halifax, PA 17032
Telephone: (717) 350-2516
E-mail: Laurie@pvsimm.com

Greg Stewart, Vice President

2016 Armstrong Valley Road
Halifax, PA 17032
Telephone: (717) 350-5235
E-mail: wgjstewart@hotmail.com

Vicki Varner, Secretary

8436 Mountain Road
McAlisterville, PA 17049
Telephone: (717) 463-2513
E-mail: gvarner@centurylink.net

Ron Dziembowski, Treasurer

400 River Road
Hillsborough, NJ 08844
Telephone: (774) 289-4564
E-mail: RLUVSANGUS@aol.com

Directors

Jim Cowell

1214 Garards Fort Road
Waynesburg, PA 15370
(724) 986-8502
frostyspringsfarm@hotmail.com

David Downs

194 Stock Farm Road
Jackson Center, PA 16133
(724) 376-7195
ddowns2011@hotmail.com

Ron Dziembowski

400 River Road
Hillsborough, NJ 08844
(774) 289-4564
RLUVSANGUS@aol.com

Bradley Feight

2672 Mountain Chapel Road
Breezewood, PA 15533
(814) 502-8973
feibra60@pct.edu

Steve Hook

4751 New Berlin Hwy.
Middleburg, PA 17842
(570) 837-7020
stewanfarms@verizon.net

Laurie Meyers

470 Million Dollar Road
Halifax, PA 17032
(717) 350-2516
Laurie@pvsimm.com

William Shoemaker

3839 Milligans Cove Road
Manns Choice, PA 15550
(814) 624-0667
shoesim@yahoo.com

Greg Stewart

2016 Armstrong Valley Road
Halifax, PA 17032
(717) 350-5235
wgjstewart@hotmail.com

William T. Vossler

665 Knoxlyn Road
Gettysburg, PA 17325
(717) 337-1615
tvossler@comcast.net

Curry Wagner

1423 Sand Beach Road
Hummelstown, PA 17036
(717) 991-0387
cwsfarms58@gmail.com

Term Expiring 2016

David Downs
Laurie Meyers
William Shoemaker

Term Expiring 2017

Bradley Feight
Steve Hook
William T. Vossler
Curry Wagner

Term Expiring 2018

Jim Cowell
Ron Dziembowski
Greg Stewart

Upcoming Events

Pennsylvania Beef Expo and Performance Bull Test

March 25, 2016

Spring into Excellence Sale
Performance-Tested Bull Sale
State College, PA

March 26, 2016

Junior Jackpot Show
Harrisburg, PA

AJSA Eastern Regional Classic

June 15-18, 2016

Cookeville, TN

AJSA National Classic

July 9-15, 2016

Des Moines, IA

PSA Field Day

July 9, 2016

Curry Wagner Simmentals
Hummelstown, PA

All cattlemen are invited to attend!

Please see our website,
pasimmental.com, for details.

Ag Progress Days

August 16-18, 2016

Please visit our booth!!
Rock Springs, PA

Keystone International Livestock Exposition

September 30-October 9, 2016

Harrisburg, PA

Open Show, Junior Show,
Junior Steers

Delaware Livestock Exposition

October 15-16, 2016

Delaware State Fairgrounds
Harrington, DE

Pennsylvania Fall Classic Sale

Saturday, October 22, 2016

Simmental Sale
Waynesburg, PA

American Royal Stock Show

October 19-30, 2016

Kansas City, MO

North American International Livestock Exposition

November 1-18, 2016

Louisville, KY

National Western Show and Sale

January 7-22, 2017

2017 The One Simmental Sale
ASA Annual Meeting
Denver, CO

2017 Pennsylvania State Farm Show

January 7-14, 2017

Harrisburg, PA



- Custom Fitting for Show & Sale
- Herd Consultation
- Semen Sales
- Sale Advisor & Consultation
- Private Treaty Sales

CLIFF & LYNN ORLEY

1486 Mt. Wilson Rd.
Lebanon, PA 17042
(717) 964-2243

(717) 964-1862 Fax

(717) 269-0128 Cell

corley01@comcast.net

www.keystonecattleservices.com

Simmental ...

Today's Simmental on Cutting Edge

From the American Simmental Association

Bozeman, Montana

In 1968, a group of maverick cattlemen met to form the American Simmental Association. They weren't mavericks because they wanted to produce Simmental genetics, they were different because they decided to use performance records and other technologies as everyday tools for cattle and beef improvement.

As a result of their focus on performance, the first beef breed sire summary was published in 1971. This initial summary contained information on a grand total of 11 Simmental bulls! Today, millions of records are analyzed for each Simmental Sire Summary and almost 100,000 sires have records in the database.

European Simmental breeders had incorporated performance traits unique to most world cattle genetics. Few breeds could offer the combination of early puberty, growth rate, muscularity, milk production and gentle disposition found in the Simmental imports of the 1970s. When combined with America's existing Brahman and British-influenced commercial cows, farmers and ranchers had finally discovered a crossbreeding combination that optimized feeder cattle production, and offered the opportunity for great crossbred replacement heifers.

Simmental were so popular by the early 1980s, many commercial herds had become high percentage Simmental. These cattle had similar characteristics to European Simmental and thrived in high nutrition environments; however, in several areas of the U.S., it was becoming apparent that Simmental genetics needed more calving ease, less frame size and more carcass quality.

The members of the American Simmental Association responded to the call for improving these traits. Since 1984, ASA's database genetic trend proves today's Simmental sires offer greatly improved calving ease. There are numerous bulls listed in the ASA Sire Summary with high accuracy progeny proofs for exceptional direct and maternal calving ease. Now, by selecting for high calving ease EPDs, many commercial herds can safely use Simmental bulls on their heifers and cows.

Using a planned crossbreeding system, Simmental cross females are valuable replacements. Besides being among the easiest calving heifers in the business, Simmental frame scores have been dramatically decreased. The most popular Simmental bulls in the U.S. averaged frame score 6.4 in 2002 compared to a 9 in 1986. In addition, these current bulls are all solid colored and polled.

Simmental ...

Today's Simmental on Cutting Edge (continued)

**From the American Simmental Association
Bozeman, Montana**

The biggest change in beef production in the 1990s was the intense emphasis on carcass value. Branded beef programs featured products with much better value consistency. Both leanness and meat quality are and will continue to be critical factors of carcass value. The American Simmental Association is the most aggressive continental breed association in performance testing sires for carcass value.

Every bull in the ASA 2005 Sire Summary has carcass EPDs. Each year the ASA tests over 100 young sires for carcass value. In 1999, more than 2,000 carcasses from this program produced these averages: carcass wt. 782, fat thickness 0.41, REA 13.0, USDA Choice 69%, and less than 1% USDA Standard, dark cutters or heavy weight discounts. The ASA also lists the only Tenderness EPDs in the beef industry for most of the popular sires.

The breeders of the American and Pennsylvania Simmental Associations have taken a great breed and made it better. Where else can you find early puberty, great growth, continental breed muscle and easy dispositions tied to a database that identifies calving ease, moderated frame and the best marbling genetics among high growth cattle? Visit our website www.simmental.org or write for a free sire summary:

AMERICAN Simmental ASSOCIATION

**One Genetic Way
Bozeman, MT 59715**

Telephone: (406) 587-4531

Fax: (406) 587-9301

E-mail: simmental@simmgene.com

Website: www.simmental.org

JEH SIMMENTALS

All our cattle were born and raised on our farm.



Donor

JEH KELLY • ASA #2338093

JS Country Ivy x SS Goldmine Sire L42



Bred Heifer

JEH MISS UNIQUE Z33

JEH Unique 119U x Hooks Shear Force



Bred Heifer

JEH KELLY'S ANSWER Z218

JEH Kelly x SP The Answer 813

DONORS:

JEH UNIQUE 119u #2453404

MMP Kiss This 37L x

STF Dominique R170

JEH LULU w101 #2544880

GCF Miss Caliente x

Wheatland Red Hummer 608S

SIREs:

Hook Shear Force 38K #2081939

SVF/NJC Built Right N48 #2225381

SS Ebony's Grand Master #2281133

Mr. NLC Upgrade U8676 #2474338

Embryos - Yearlings - Breds

All Available

JEH SIMMENTALS

Since 1986

Call for information.

Will e-mail pictures upon request.

Jack Herr

105 Maple Drive

Fredericksburg, Pa. 17026

717-507-8342 • jehsimm@aol.com

Pennsylvania Simmental Association

Membership Listing

Arndt, Michael and Rhonda Cell: (570) 847-9844
Ste-Wan Farms
 441 Hillside Drive, Middleburg, PA 17842
 Snyder County
 E-mail: farmchic3@hotmail.com

Baskin, Harvey E. and Dena Cell: (860) 450-6841
Wanna-B-Rich Farm
 342 Ranch House Lane, Richmond, TX 77469
 Fort Bend County
 E-mail: harv_bask@att.net
45 minutes SW of Houston, TX.

Bayler, John and Rita (717) 641-3151
Double "B" Venture Cell: (717) 304-5385
 132 Community Park Drive, Palmyra, PA 17078
 Lebanon County

Benner, Fred, Kim, Ellie, and Emily Fred: (717) 320-2303
Serenity Hills Farm Kim: (717) 994-2540
 429 Happy Hollow Road, Mifflintown, PA 17059
 Juniata County
 E-mail: fbenner@embarqmail.com
From US 322, PA 35 North at Mifflintown Exit, 1.5 miles.

Bertrand, Gary, Cindy, Stephanie, and John (508) 832-8313
Hillcrest Farm Cindy's Cell: (774) 272-1235
 148 Millbury Street, Auburn, MA, 01501
 Worcester County
 E-mail: cindybertrand@charter.net

Bishop, Kevin W. (856) 358-3923
KB Simmental Cell: (856) 297-3813
 29 Pine Tavern Road, Elmer, NJ 08318
 Salem County
 Email: kbishop5@aol.com

Bosley, Jim and Betty (304) 530-6636
Buena Vista Simmentals Cell: (304) 257-3093
 P.O. Box 5, Old Fields, WV 26845
 Hardy County
 E-mail: bvsimmentals@hardynet.com
4 miles north of Moorefield on Rt. 220, turn left on to Fish Pond Road. Physical address is 296 Fish Pond Road.

Bradfield, Michael (717) 328-4177
Brad-Fields Farm Cell: (917) 497-7293
12850 Shimpstown Road, Mercersburg, PA 17236
Franklin County
E-mail: email@michaelbradfield.com

Broughton, Jonah and Abbey (585) 356-0906
Sunrise Farms
2939 Glor Road, Attica, NY 14011
Wyoming County
E-mail: sunrisefarmsny@yahoo.com

Brown, Chris and Kellee, Mollee, Tyler, and Carter (304) 366-5353
Classic Farms
430 Levels Road, Fairmont WV 26554
Marion County
E-mail: classicsim@aol.com
Located off I-79 exit 132 (5 miles).

Brown, Les and Bernie (814) 967-3503
Old Foundation Farm Cell: (814) 720-4407
14718 Strawbridge Road, Townville, PA 16360
Crawford County
E-mail: laloba2@windstream.net

Bussard, Gary and Paulette (814) 257-8570
163 Pasture Road, Dayton, PA 16222
Armstrong County

Campbell, James and Jackie (724) 852-1622
Campbell Land & Cattle LLC Cell: (724) 263-0955
928 W.W. Railroad Road, Sycamore, PA 15364
Greene County
E-mail: cscfarm@yahoo.com

Carlisle, Barbara (724) 312-2746
Carlisle Farm
22 Mavor Lane, Avella, PA 15312
Washington County

Casilio, Butch and Denise (814) 965-5079
Elk County Simmentals Butch's Cell: (814) 335-4417
1316 Water Street Ext., Johnsonburg, PA 15845 Denise's Cell: (814) 335-2434
Elk County
Six miles north of Ridgway on Route 948, bear right. Go to bottom of hill. Take right turn before bridge on Water Street Extension. Go 1-1/2 miles. Farm on left.



Registered Simmentals



**DOUBLE RD
FARM
AND LIVESTOCK**

400 River Road, Hillsborough, NJ 08844

Ron & Rhonda
Dziembowski

Phone: 774-289-4564
Cell: 508-868-8836



Black, Red & Traditional • AI Sired Since 1980

Simmental

*Home of LBF Simmentals purebred
performance cattle with show appeal.*

See our bulls/heifers in the 2016 PA Bull Test Sale and Spring
into Excellence Sale March 25th, 2016. Also check out our cattle
at the Stars & Stripes Sale in Gettysburg, PA, May 7th, 2016, and
PA Fall Classic in Waynesburg, PA, October 22nd, 2016.

Ken & Mary Gumaer
716-735-7904
Cell: 716-830-8149

9335 Pearson Rd., Middleport, NY 14105

marygumaer@aol.com

Do YOU Have a Durable, Efficient Way to Do Your...

- | | |
|---------------------------|--------------------|
| ✓ Vaccinations | ✓ Embryo Transfers |
| ✓ Pregnancy Checks | ✓ Deworming |
| ✓ Artificial Insemination | ✓ Ear Tagging |



Pearson-Designed by Cattlemen for Cattlemen

- ★ Chutes
- ★ Tubs
- ★ Alleys
- ★ Headgates

**Allegheny Meadows
Joe & Doretta Speicher
Manns Choice, PA**

→ **New for 2015** ←

**Stronghold Livestock Equipment
& Timeless Fence**

www.plastic-innovation.com

814-733-2775

www.alleghenymeadows.net

Claus, Richard E. (860) 429-9500
Fenton River Farm
81 Daleville Road, Willington, CT 06279
Tolland County

Clepper, Paul (717) 960-0182
Nor-Win Farm Cell: (717) 448-0675
180 Willow Grove Road, Carlisle, PA 17013
Cumberland County
E-mail: ypclep@hotmail.com

Cowell, Jim and Billie (724) 627-8271
Frosty Springs Farm Jim's Cell: (724) 986-8502
1214 Garards Fort Road, Waynesburg, PA 15370
Greene County Billie's Cell: (724) 998-4355
E-mail: frostyspringsfarm@hotmail.com
Website: www.frostyspringsfarm.com
I-79 South, Kirby Exit, go left at stop sign 2 miles, at stop sign, turn left. Go another 2 miles.

Crum, Bob and Jenny Bob: (740) 213-7727
Crum's Circle C Jenny: (814) 571-3243
36951 CR 2E, Woodsfield, OH 43793
Monroe County
E-mail: crumscirclec@gmail.com
Website: crumscirclec.com
From I70, south on OH800 to Malaga (flashing light), right on OH145 for 3 miles to Miltonsburg, take first right after town—County Rd 2E for 1 mile.

Daum, Fred and Suzie (814) 354-2280
Hillside Acres Cell: (814) 229-3786
21969 Route 208, Tionesta, PA 16353
Clarion County
E-mail: hillside@venustel.com
Rt. 208 2.5 miles east of Fryburg, PA.

Downs, David, Annette, Sara, and Cody (724) 376-7195
194 Stock Farm Road, Jackson Center, PA 16133
Mercer County
E-mail: annettedowns@ymail.com

Druck, Philip (814) 628-4422
1099 Grimes Hill Road, Sabinsville, PA 16943
Tioga County
E-mail: phildruck@yahoo.com
North of Gaines on Rt. 349; from Rt. 6 approximately 6 miles to left on Grimes Hill Road.

Indiana County, PA

Home of one of the top
Simmental Breeders
And Club Calf
Producers.

Woodview Simmental Farm

Frank and Susan Glass

***Olivia, Ivy, Amber, and
Kaycee Long***

1801 Grange Road
Blairsville, PA 15717
(724) 599-4612

E-mail: sunnysue831@gmail.com



Stony Creek Simmentals
Gene & Elvira McMichael



Purebred Simmentals
Show Heifers & Bulls
Top AI Bulls Used

Our performance cattle
give us great cows and
predictable EPD's.

**3835 Milligans Cove Rd
Manns Choice, PA 15550
(814) 623-7974**

E-mail: matadorjet@embarqmail.com

Elk County Simmentals Elk County Simmentals

ELK COUNTY SIMMENTALS



**Butch Casilio
814-335-4417**

**Denise Casilio
814-335-2434**

Fullblood Fleckvieh

**1316 Water Street Ext.
Johnsonburg, Pa.
814-965-5079**

Elk County Simmentals Elk County Simmentals

Elk County Simmentals Elk County Simmentals

Elk County Simmentals Elk County Simmentals

- Duncan, Annie** (717) 350-2515
Powell's Valley Simmentals
 470 Million Dollar Road, Halifax, PA 17032
 Dauphin County
 E-mail: simmtalker@yahoo.com
 Website: www.pvsimm.com
- Dziembowski, Ron and Rhonda** (508) 868-8836
Double RD Farm
 400 River Road, Hillsborough, NJ 08844
 Somerset County
 E-mail: RLUVSANGUS@aol.com
- Feight, Bradley** Cell: (814) 502-8973
Feight Show Stock
 2672 Mountain Chapel Road, Breezewood, PA 15533
 Bedford County
 E-mail: feibra60@pct.edu
- Feight, Jeff and Sherry** (814) 735-3797
Feight's Farm Cell: (814) 502-8971
 480 E. Graceville Road, Breezewood, PA 15533
 Bedford County
 E-mail: JNSSimmentals@yahoo.com
- Fox, Brent** (717) 649-2192
FWB Simmentals
 169 Dellville Road, Duncannon, PA 17020
 Perry County
 E-mail: bfox5@ptd.net
11 & 15 to 274 West, go approximately 1 mile to Dellville Road (on left). Go approximately .7 tenths of a mile to 169 on left.
- Glass, Frank and Susan** (724) 599-4612
Woodview Simmental Farm
 1801 Grange Road, Blairsville, PA 15717
 Indiana County
 E-mail: sunnysue831@gmail.com
From Rt. 22 at Blairsville Exit take Rt. 217 North about 3 miles to Grange Road. Take left on Grange Road and go about 1 1/2 miles to farm.
- Goss, Tim** (717) 543-6128
Goss Family Farm
 90 Decatur Road, McClure, PA 17841
 Mifflin County
 E-mail: gossfamilyfarm@gmail.com

Porter's Simmental Lake Ranch



The Porter Family
81 Porters Simmental Lane
Waverly, NY 14892

Phone: (607) 565-2452 Fax: (607) 565-8670

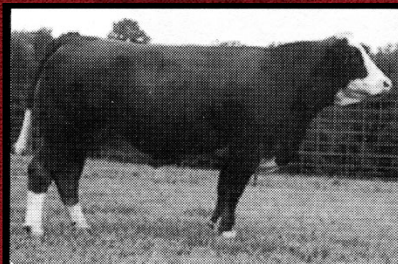
E-mail: portersimm@clarityconnect.com

Web site: www.portersconcrete.com



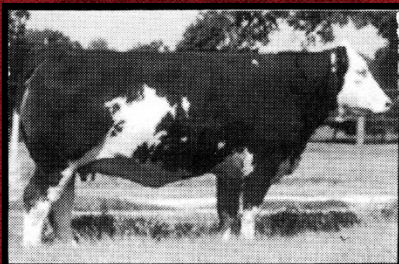
Full Fleckvieh

T2 Astrid F17



Astrid is a star in every sense of the word. Her pedigree includes the great Rachel cow family which has proved to be one of the most prolific producers of great females of any cow family in North America. She is one of our top donor cows.

Ms JMC Else G391



Else is a truly unique full Fleckvieh cow. She is an extremely long, thick, attractive, Holb daughter out of the great Luba cow. She is one of our top donor cows.

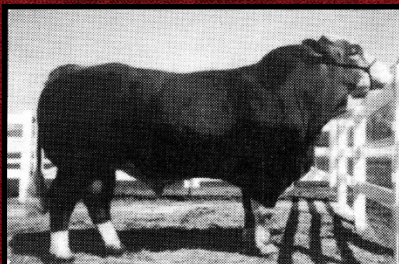
We have been fortunate to assemble a small group of quality full Fleckvieh bulls as well as excellent donor cows, some of which will be flushed for the first time this year. Calves out of our superior full Fleckvieh bulls, Hafke and Kaiser are weaning at astonishing rates.

Mr JMC Hafke F392



Hafke is the best bull Fleckvieh son alive in North America today. Here is an opportunity to buy semen out of a known son of "Hafke", the great German meat sire known for tremendous muscling.

Mr JMC Kaiser F302



Kaiser is a son out of Great Guns Karl 17C, and his dam is Adria 11A, one of the most powerful Fleckvieh cows in the breed today. He is dark red, double ring-eyed, with tremendous muscling from front to rear.

**Semen \$25 a straw, 5-straw minimum
Call us today for information about embryos.**

Graham, Galen, Nichole, Levi, and Grace Galen's Cell: (717) 968-3643
NikLen Valley Farm **Nichole's Cell: (717) 968-6635**
13820 Wolf Road, Felton, PA 17322
York County
E-mail: niklenvalley@aol.com

Gromlich, Bruce **(610) 562-5737**
SASA Farms **Cell: (610) 334-9847**
121 Schappell Road, Hamburg, PA 19526
Berks County
E-mail: sasafarms@copper.net
78-61 South, go 2 miles, turn left on Schappell Road, 2 1/2 miles, farm on right.

Gumaer, Ken and Mary **(716) 735-7904**
Ladybug Farm **Cell: (716) 830-8149**
9335 Pearson Road, Middleport, NY 14105
Niagara County
E-mail: marygumaer@aol.com
From Rt. 31 North on Carmen Road, 1 1/2 miles left on Pearson Road; 1 mile on north side after Drum Road.

Harris, John and Vickie **(814) 339-7752**
Harris Farms
1603 Bucket Line Road, Osceola Mills, PA 16666
Clearfield County
E-mail: obx.wmn@gmail.com
From red light in Osceola Mills, to up hill, follow road 1.2 miles, first farm on left.

Hebel, Ken **(717) 469-2537**
HEB Farms
1067 Gravel Hill Road, Grantville, PA 17028
Lebanon County
2 miles south of exit 80 off Route 81. 1st farm after 1st crossroad on Gravel Hill Road.

Herr, Jack **(717) 507-8342**
JEH Simmentals **Fax: (717) 273-3751**
P.O. Box 101, 105 Maple Drive, Fredericksburg, PA 17026
Lebanon County
E-mail: jehsimm@aol.com

Hook, Steve and Wanda **(570) 837-7020**
Ste-Wan Farms
4751 New Berlin Highway, Middleburg, PA 17842
Snyder County
E-mail: stewanfarms@verizon.net



This is an In Dew Time daughter that was Champion heifer at PA Simmental Assoc Summer Field Day, 2012, with Emily.

SERENITY HILLS FARM

**Breeders of the Top Indexing
Simmental Bulls at the PA Bull Test
2007 and 2011**

We have a couple of bulls for sale this summer.

Stop by to visit us at the farm, we usually have heifers and bulls for sale

Fred, Kim, and Emily Benner
fbenner@embarqmail.com

717-320-2303

429 Happy Hollow Road
Mifflintown, PA

This was a Dream On calf owned by Katie McLaughlin, she won Calf Division Reserve Champion in Junior Show at Farm Show 2013.



Hoover, Ray E. and Donna (717) 266-2649
Codorus Furnace Farm
645 Codorus Furnace Road, Mount Wolf, PA 17347
York County

Householder, Dennis (724) 499-5112
Cassyle Valley Simmentals
435 Jacobs Run Road, Holbrook, PA 15341
Greene County
From Waynesburg, Rt. 21 west for 11 miles to village of Rutan. Left on Jacobs Run Road for 1.2 miles.

Lay, William and Kathleen (410) 679-0882
Folly Farm Cell: (443) 307-7550
2210 Old Joppa Road, Joppa, MD 21085
Harford County
E-mail: laykb@aol.com

Lenzner, John E. and Geraldine (412) 741-2672
Lenzner Farms Cell: (412) 780-0701
619 Duff Road, Sewickley, PA 15143
Allegheny County
E-mail: johnlenzner@aol.com
79 North, Mt. Nebo Exit (3 miles from interstate) Duff Road.

Limbert, Adam and Sarah Cell: (570) 617-7620
Limbert Livestock Co.
332 Bethel Road, Pine Grove, PA 17963
Schuylkill County
E-mail: sarah13mae@hotmail.com

Loht, Ken, Tina, Noah, Kaleb, Kezia, and Tricia (717) 543-6185
KNT Beef Farm
250 Road Apple Drive, McClure, PA 17841
Mifflin County
E-mail: kntbeef@verizon.net

Lucariello, Steve and Barb (716) 761-3509
Back Road Ranch
8105 Nettle Hill Road, Sherman, NY 14781
Chautauqua County
E-mail: backroadranch@gmail.com

Elm Side Farm

Registered Simmental Cattle

Also Registered SimAngus Genetics

Show Calves and Breeding Stock for Sale

Cattle for the small Breeder, calm dispositions.

Visitors are always welcome – Call for directions



ESS Zale ZR12 – 1/6/2012

CLO/LTS Entourage x ESS Rose (Nichols Black Destiny)

Supreme Champion NYSF & Delaward County Fair

Reserve Grand Champion Keystone International Livestock

Class Winner NAILE

THE REYNOLDS FAMILY

Art, Barb, Roger and Darby

836 Little Dryden Rd

Walton, N.Y. 13856

Barn: 607-865-6888

Cell: 607-434-3058

elmsidefarm@frontiernet.net

Mankey, Valerie L. and Duane Snee

Cell: (724) 554-0446

SVJ Farm

465 Ringland Road, Amity, PA 15311

Washington County

E-mail: valeriemankey@earthlink.net

Website: www.svjfarm.com

McClure, C. Arnold and Linda

(814) 542-4748

McClure Mills Farms

Cell: (814) 591-2125

16381 Pump Station Road, Shirleysburg, PA 17260-9735

Huntingdon County

E-mail: arnoldmccclure@gmail.com

1 mile north of Shirleysburg on Pump Station Road.

McMichael, Gene and Elvira

(814) 623-7974

Stony Creek Simmentals

Cell: (814) 310-1464

3835 Milligans Cove Road, Manns Choice, PA 15550

Bedford County

From the PA Turnpike (East), take the Bedford Exit. Then go 30 West to 31 West. It will turn into SR 96. Continue south and turn left at White Sulphur Springs Road. Farm is 2 miles on right. From the PA Turnpike (West), take the Somerset Exit. Then to 31 East to Bard. Turn right at Bard and then left at SR 96. Turn right at White Sulphur Springs Road. Farm is 2 miles on the right.

Messick, Joe, Sally, and Mylin

(717) 944-3500

Messick Farms

Office: (717) 985-1021

2835 Schoolhouse Road, Middletown, PA 17057

Dauphin County

E-mail: messick85@comcast.net

PA Turnpike, Exit 247 to Rt. 283E. 1 mile to 441/Airport Exit. Rt. 441 N to first farm.

Metzker, Wesley, Hunter, and Keller

(814) 931-2553

2nd Chances Cattle Co.

5334 Clover Creek Road, Williamsburg, PA 16693

Blair County

E-mail: wesmetzker@yahoo.com

Meyers, Laurie

(717) 350-2516

Powell's Valley Simmentals

470 Million Dollar Road, Halifax, PA 17032

Dauphin County

E-mail: Laurie@pvsimm.com

Website: www.pvsimm.com

From Harrisburg, Rt. 322 West, exit on Rt. 147 North. Rt. 147 North for 4 miles. Turn right on Million Dollar Road. First farm on right.



SERVICE

RIGHT THERE BESIDE YOU



Conception. Calving Ease. Carcass. Cows.

Select Sire Power, Inc.

2623 Carolina Springs Road • Rocky Mount, VA 24151

Phone: 800.423.7473 • Fax: 540.483.7286 • office@selectsirepower.com

It's time you get to know the largest, most highly trained professional sales and service staff in the industry. Visit www.selectfreshbeef.com.



YOUR SUCCESS Our Passion

Miller, William and Kathleen (724) 627-7129
1308 Garands Fort Road, Waynesburg, PA 15370 Cell: (863) 604-7303
Greene County
E-mail: billkathymiller@yahoo.com

Monroe, Tom and Cheryl (301) 293-3274
Highfields Farm
11500 Meeting House Road, Myersville, MD 21773
Frederick County
E-mail: t3monroe@xecu.net

Mytar, Chris and Alissa (217) 741-8892
CAM Cattle Co.
111 Palomino Place, Charles Town, WV 25414
Jefferson County
E-mail: amc6121@hotmail.com
Website: www.frostyspringsfarm.com
Cattle can be seen at Frosty Springs Farm.

Nice, Brent (717) 919-8449
38 Pleasant View Road, Halifax, PA 17032
Dauphin County
E-mail: brent.nice89@gmail.com

Nogan, Ann (717) 705-1689
Pennsylvania Center for Beef Excellence, Inc.
2301 N Cameron Street, Room 303, Harrisburg, PA 17110
Dauphin County
Email: anogancbe@gmail.com
Website: www.beefexcellence.com

Orley, Cliff and Lynn (717) 964-2243
CLO Simmentals Cell: (717) 269-0128
1486 Mt. Wilson Road, Lebanon, PA 17042
Lebanon County
E-mail: corley01@comcast.net
Website: www.keystonecattleservices.com
South of Hershey on Rt. 117 to Colebrook, P.A. East 1/3 mile on Mine Road, farm on right.

Palmer, William (814) 282-1493
Palmer Cattle Co.
4563 Turkey Track Road, Linesville, PA 16424
Crawford County

NO BULL TOO BIG OR NASTY

S
E
M
E
N

Semen Freezing since 1983

Semen Fertility Evaluations



S
E
M
E
N

ZIMMERMAN'S CUSTOM FREEZING

131 Redwell Rd., New Holland, PA 17557
Phone: 717-355-2048 Cell: 717-940-1430

www.semenfreezing.com

www.pajrsimmental.com



**WE WANT
YOUR NEWS!!!!!!**

If you have any news, events,
or show results (send us your
county fair news and pictures!),
please send to:

Annie Duncan
E-mail: simmtalker@yahoo.com

E&R Farms, Inc

Pure Bred Simmental



Randy R. Runk

Vice President
& General Manager

17299 Hill Valley Road
Shirleysburg, PA 17260

(814) 542-2154

Cell: (814) 599-3377

- Paulus, Millard F. IV** (856) 358-3980
Paulus Farms
 581 Olivet Road, Pittsgrove, NJ 08318
 Salem County
 E-mail: paulusfarms@verizon.net
- Poliskiewicz, Phil, Elena, and Jesse** (570) 897-5390
Poliskiewicz Stock Farm
 1720 Totts Gap Road, Bangor, PA 18013
 Northampton County
- Porter, Ralph E.** (607) 565-2452
Porter's Simmental Lake Ranch Cell: (607) 972-7221
 81 Porters Simmental Lane, Waverly, NY 14892
 Tioga County
 E-mail: portersimm@clarityconnect.com
 Web site: www.portersconcrete.com
Three miles east of Waverly off of Route 17C.
- Regula, Edward J. and Toni Gail** (724) 439-4179
Cher-O-Kee Cattle Co. Cell: (724) 322-1813
Home of Denver Champion Lazy H Burn Right T26
 P.O. Box 125, Brownfield, PA 15416
 Fayette County
 E-mail: rag857@atlanticbb.net
One mile off of Route 40 (Uniontown) on Hopwood Fairchange Road.
- Reynolds, Art** (607) 865-6888
Elm Side Farm
 836 Little Dryden Road, Walton, NY 13856
 Delaware County
 E-mail: elmsidefarm@gmail.com
I 88 to Exit 8 206 East go 16 miles to county Rt 47. Turn right go 3/4 mile to farm on right.
- Roberts, Bob** (740) 435-0297
Double R Simmentals
 5498 Skyline Drive, Cambridge, OH 43725
 Guernsey County
 E-mail: broberts103@roadrunner.net
- Rockefeller, David and Miranda Kaiser** (914) 631-1154
Hudson Pines Farm
 180 Bedford Road, Pocantico Hills, Sleepy Hollow, NY 10591
 Westchester County
 E-mail: barn180@aol.com
 Website: www.hudsonpinesfarm.com

GENETIC VISIONS, LLC

**Providing quality Embryo Transfer services
to the Northeast for over 30 years!**

- ❖ *In clinic housing for donors*
- ❖ *On farm procedures*
- ❖ *Third party recipients available*
- ❖ *Fetal ultrasound sexing for ET clients*
- ❖ *Frozen embryos available – Call for
current pedigrees and pricing*

James F. Evans, VMD

Office: 717-485-0532 Mobile: 717-816-1168
3466 Breezy Point Road, McConnellsburg, PA 17233

Rohm, Randy and Heather

(724) 484-0316

Smoky Valley Farm, LLC

1135 West Finley Road, West Finley, PA 15377

Washington County

E-mail: smvcattle@gmail.com

Website: www.smokyvalleyag.com

East or West I-70 Exit 1. Turn left off exit onto Old Brick Road for 5 miles. Turn left on Bebam Ridge Road. First right West Finley Road for 1 mile. Farm on left.

Ruggles, Ron, Amy, and Molly

(740) 972-1030

Homestead Acres

2103 County Road 159, Ashley, OH 43003

Morrow County

Runk, Randy

(814) 542-2154

E&R Farms LP

Cell: (814) 599-3377

17299 Hill Valley Road, Shirleysburg, PA 17260

Huntingdon County

E-mail: randy.runk@gmail.com

Runkle, Sally Messick

(717) 944-1707

Messick Farms

180 Newberry Road, Middletown, PA 17057

Dauphin County

E-mail: srunkle180@yahoo.com

Schadel, Neal and Darlane

(570) 682-8562

144 Coleman Road, Hegins, PA 17938

Schuylkill County

E-mail: chickencoop144@gmail.com

Rt. 25; 8 miles west of Hegins. Turn right on Honeymoon Trail after Wenger Feed Mill; 1/2 mile turn right onto Coleman Church Road. Farm on left after church.

Schaefer, Lonny and Elizabeth

(607) 467-5762

Catskill Cattle

Cell: (607) 727-6320

96 Laurel Bank Ave, Deposit, NY 13754

Delaware County

E-mail: lizz@catskillcattle.com

Website: www.catskillcattle.com



Pennsylvania Center for Beef Excellence

www.beefexcellence.com

Online Beef Industry Directory

This free resource, available through our website, allows you to increase your marketing opportunities. Just complete your information in the "add your organization" drop-down under the service directory. We hope this service proves valuable to all segments of the industry and continues to grow in the coming years.

Carcass Data Evaluation Program

The report looks at eight traits that impact final quality and yield grades: maturity, marbling, ribeye area, hot carcass weight, fat thickness, % kidney/pelvic/heart fat and final yield grade. This information will allow you to evaluate your breeding program, compare feed programs, and enhance your operation decision making. Complete the request form for the Carcass Data Evaluation Program under the Programs tab of our website.

Real Results in the Real World



"The CBE has been an instrumental resource to assist in developing tools that make independent farms like ours competitive in direct marketing beef."

Rob Hess, Bow Creek Farm and Cattle Co., Hershey, PA

***Please see our website for more information
about the programs focused on
strengthening Pennsylvania beef producers!***

Uniting Pennsylvania's Beef Industry

PA Center for Beef Excellence
PA Department of Agriculture
2301 N Cameron St., Room 303
Harrisburg, PA 17110

Ann Nogan
717-705-1689
anogancbe@gmail.com



Remington Secret Weapon x Lazy H Shez Too Cool W58

Grand Champion Simmental Bull, 2015 KILE

Grand Champion Simmental Bull, 2016 PA Farm Show



***Sells at the 2016 Gettysburg
Stars and Stripes sale.***



**Flying B Cut Above x
Lazy H Shez Too Cool W58**

***High-selling lot at
the 2015 Stars
and Stripes Sale.***

*Thank you to Pickerel
Farms, Athens, GA for
purchasing SSC Miss
Cool Butt 26A.*



Remington Secret Weapon x Lazy H Shez Too Cool W58

**Reserve Grand Champion Simmental Female,
2016 PA Farm Show**



***Sells at the 2016 Gettysburg Stars
and Stripes sale with a heifer calf at side.***



***2014, 2015, and 2016 High Indexing
Simmental Bull, PA Bull Test***

2016 PA Farm Show Premier Breeder and Premier Exhibitor

Stewart's Simmental Cattle

***Breeding Black and Red Simmental Cattle
with performance and show ring style.***

Please contact us with your Simmental Cattle needs.

Greg & Grady Stewart
2016 Armstrong Valley Road
Halifax, PA 17032
(717) 350-5235

or

Sam Stewart
368 Stewart Drive
Brookville, PA 15825
(814) 952-2533

Contact us with your semen needs—Cattle Visions Semen Distributor

Scherich, Rodney (724) 428-3555

Scherich's Simmental Farm

325 Wheeling Creek Road, Windridge, PA 15380

Greene County

From Waynesburg, take Route 21 West to Ryerson Station. Turn right on Wheeling Creek Road. Go one mile to first farm on left.

Shaffer, Paul M. (814) 623-7361

1149 Pensyl Hollow Road, Bedford, PA 15522

Cell: (419) 349-3433

Bedford County

Exit PA Tpk. #146. After toll to light turn left go approximately 2 miles to stop sign turn left to 2nd farm on right uphill side of trailer park.

Shoemaker, William E. (814) 624-0667

Shoemaker's Simmentals

Cell: (412) 721-8814

3839 Milligans Cove Road, Manns Choice, PA 15550

Bedford County

E-mail: shoesim@yahoo.com

From the PA Turnpike (East), take the Bedford Exit. Then go 30 West to 31 West. It will turn into SR 96. Continue south and turn left at White Sulphur Springs Road. Farm is 2 miles on left. From the PA Turnpike (West), the Somerset Exit. Then to 31 East to Bard. Turn right at Bard and then left at SR 96. Turn Right at White Sulphur Springs Road. Farm is 2 miles on the left.

Smithson, Ricky, Debbie, and Shane (443) 463-4641

Pond View Farm

2531 Jolly Acres Road, White Hall, MD 21161

Harford County

E-mail: rick@pondviewfarm.com

Website: www.pondviewfarm.com

Snyder, Lee V. (814) 374-4684

Harvest Plantation

Cell: (814) 758-1221

153 Susquehanna Drive, Franklin, PA 16323

Venango County

E-mail: Lsnyder1@zoominternet.net

4 miles NW Franklin.

Stewart, Greg, Grady, and Sam **Greg: (717) 350-5235**

Stewart's Simmental Cattle

2016 Armstrong Valley Road, Halifax, PA 17032

Dauphin County

E-mail: wgjstewart@hotmail.com

The Brand That's Built to Handle Yours

StrongHold Cattlemaster 640:

- Heavy-duty manual headgate
- Humping bar
- Side exit on both sides
- Ratchet bar side squeeze
- Flex cutting gate
- Palpation cage
- Restraining pipe
- Diamond plate floor
- Available with digital scale
- Optional wheel assembly for portability



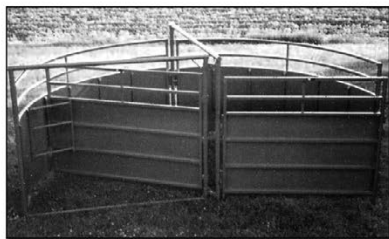
StrongHold Heavy-Duty Alley Way:

- Easy glide Nylatron movement
- Interchangeable brackets maximize positioning
- Infinite and secure adjustment
- Ground clearance of moving parts is six inches
- Pre-punched for Alley Can't Back
- Alley adjusts from less than 15 inches to 28+ inches



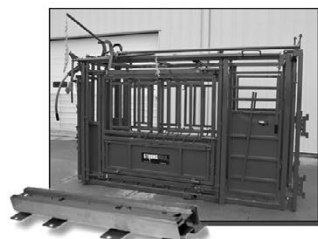
StrongHold Heavy-Duty Alley Way:

- Eight-foot sweeping radius
- Spring-loaded crowding gate latch
- 14 gate locking points
- Heavy-duty towing hitch
- Folds in half to six feet wide



All StrongHold Chutes are Scale-Ready*:

- Digital read out
 - Reliable and accurate (1% error or less)
 - Low profile
 - AC/DC or battery powered
 - Weather resistant
 - Urethane outer jackets on cable connections
- *Cattlemaster 440 requires weldment option



Your local StrongHold contact:

EASTERN STATES LIVESTOCK SYSTEMS

1563 Oak Grove Road
Breezewood, PA 15533
814.977.0848



Frank "Butch" Otto
1-800-242-3240

Summey, Troy III and Emily (717) 644-3224
Circle S Acres and Stockyard Style
503 Miller Road, Halifax, PA 17032
Dauphin County
E-mail: stockyardstyle@gmail.com
Website: www.stockyardstyle.com
322 W to 225 N. TR Powell's Valley Road TL Enders Road. TR Miller Road. Look for Circle S Acres sign.

Taylor, Ronald, Kathi, and Bailey (570) 256-3482
White House Farm Cell: (570) 578-3086
887 Hunlock Harveyville Road, Shickshinny, PA 18655
Luzerne County
E-mail: taylorfarm@msn.com
10 miles off US Rt. 11, on St. Rt. 4016.

Torock, Cody (724) 454-3164
Torock Cattle Co.
155 Phillips Road, Latrobe, PA 15650
Westmoreland County
E-mail: c.torock2011@hotmail.com

Varner, Gary L. and Vicki (717) 463-2513
Sorrell Acres Farm Gary's Cell: (717) 512-1891
8436 Mountain Road, McAlisterville, PA 17049 Vicki's Cell: (717) 724-7488
Juniata County
E-mail: gvarner@centurylink.net

Vossler, William T. (Tom) and Barbara (717) 337-1615
Mountain View Farm Cell: (717) 752-6823
665 Knoxlyn Road, Gettysburg, PA 17325
Adams County
E-mail: tvossler@comcast.net
Website: www.mountainviewsimmentals.com
From Rte 15 / Rt. 30 Interchange, take Rt. 30 West approximately 5 miles through and past Gettysburg. Left on Knoxlyn. 1.2 miles on Knoxlyn Road then right turn at Farm Road.

Wagner, Curry and Curry Jr. (717) 943-2262
Curry Wagner Simmentals Cell: (717) 991-0387
1423 Sand Beach Road, Hummelstown, PA 17036
Dauphin County
E-mail: CWSFarms58@gmail.com
Website: www.currywagnerfarms.com



***Learn more about how our
nutrient approach can help
your operation thrive.***

Contact your local Cargill
representative or customer
service at 1-800-238-1037.

Weir, Mark, Lisa, Elizabeth (717) 266-2530
1175 Jerusalem School Road, Mount Wolf, PA 17347
York County
E-mail: **chickens15@outlook.com**

Whipkey, Charles, Katrina, Wyatt, and Emmitt (724) 499-5859
W&E Farm
186 Tara Hill Road, Holbrook, PA 15341
Greene County
E-mail: **katrina.whipkey@yahoo.com**

White, Jeanne Cell: (607) 423-4888
Paradis, Phil (herdsman)
Simme Valley Ranch
6493 Stauber Road, Groton, NY 13073
Cayuga County
E-mail: **Jeanne@simmevalley.com**
Website: **www.simmevalley.com**
Route 81, Exit 12. Right on 281, left on Rt. 90. Go 5.5 miles. Left on Salt Road. 2nd left on Stauber Road.

Whitmoyer, Les & Cindy (717) 865-2245
Whitmoyer's Mountain View Cell: (717) 673-4837
1045 Pine Grove Road, Fredericksburg, PA 17026
Lebanon County
E-mail: **lwhitmoyer@hotmail.com**
Rt. 78 East of Rt. 81 to Exit 6. Turn left on Pine Grove Road—1 mile to first farm on right after Blue Mountain Road.

Woolcock, Jerry and Ginger (570) 458-5340
Woolcock Farms
38 Reese Road, Orangeville, PA 17859
Columbia County
E-mail: **gwoolcock@gmail.com**
I-80, Exit 34, Route 42 North to Millville. At flashing light, take SR 254E 4.7 miles to Reese Road.

Pennsylvania Simmental Association
Application for Membership
www.pasimmental.com

Member Name: _____

Farm Name: _____

Address: _____

City: _____ State: _____ Zip: _____

Telephone Number: (_____) _____ County: _____

Directions to Farm: _____

E-mail: _____

Web Site: _____

I am willing to work on a committee. My preference is _____

\$40.00 Full Member _____

\$35.00 Early Bird Discount _____ *(To receive Early Bird pricing,
application must be postmarked by December 15)*

I agree to abide and be bound by the Constitution, By-Laws and regulations of the Pennsylvania Simmental Association, Inc.

Signature: _____ Date: _____

Send to:

Vicki Varner
8436 Mountain Road • McAlisterville, PA 17049
Phone: (717) 463-2513
E-mail: gvarner@centurylink.net

Membership Listing

Cross-Referenced by Farm Name

2nd Chances Cattle Co.....	Wesley, Hunter, & Keller Metzker.....	(814) 931-2553
Back Road Ranch.....	Steve & Barb Lucariello.....	(716) 761-3509
Brad-Fields Farm.....	Michael Bradfield.....	(717) 328-4177
Buena Vista Simmentals.....	Jim & Betty Bosley.....	(304) 530-6636
CAM Cattle Company.....	Chris & Alissa Mytar.....	(217) 741-8892
Campbell Land & Cattle LLC.....	James & Jackie Campbell.....	(724) 852-1622
Carlisle Farm.....	Barbara Carlisle.....	(724) 312-2746
Cassyle Valley Simmentals.....	Dennis Householder.....	(724) 499-5112
Catskill Cattle.....	Lonny & Elizabeth Schaefer.....	(607) 467-5762
Cher-O-Kee Cattle Co.....	Edward J. & Toni Gail Regula.....	(724) 439-4179
Circle S Acres/Stockyard Style.....	Troy III & Emily Summey.....	(717) 644-3224
Classic Farms.....	Chris & Kellee Brown.....	(304) 366-5353
.....	Mollee, Tyler, & Carter Brown.....
CLO Simmentals.....	Cliff & Lynn Orley.....	(717) 964-2243
Codorus Furnace Farm.....	Ray E. & Donna Hoover.....	(717) 266-2649
Crum's Circle C.....	Bob & Jenny Crum.....	(740) 213-7727
Curry Wagner Simmentals.....	Curry & Curry Jr. Wagner.....	(717) 991-0387
Double "B" Venture.....	John & Rita Bayler.....	(717) 641-3151
Double RD Farm.....	Ron & Rhonda Dziembowski.....	(774) 289-4564
Double R Simmentals.....	Bob Roberts.....	(740) 435-0297
E&R Farms.....	Randy Runk.....	(814) 542-2154
Elk County Simmentals.....	Butch & Denise Casilio.....	(814) 965-5079
Elm Side Farm.....	Art Reynolds.....	(607) 865-6888
Feight's Farm.....	Jeff & Sherry Feight.....	(814) 735-3797
Feight Show Stock.....	Bradley Feight.....	(814) 502-8973
Fenton River Farm.....	Richard E. Claus.....	(860) 429-9500
Folly Farm.....	William & Kathleen Lay.....	(410) 679-0882
Frosty Springs Farm.....	Jim & Billie Cowell.....	(724) 627-8271
FWB Simmentals.....	Brent Fox.....	(717) 649-2192
Goss Family Farm.....	Tim Goss.....	(717) 543-6128
Harris Farms.....	John & Vickie Harris.....	(814) 339-7752
Harvest Plantation.....	Lee V. Snyder.....	(814) 374-4684
HEB Farms.....	Ken Hebel.....	(717) 469-2537
Highfields Farm.....	Tom & Cheryl Monroe.....	(301) 293-3274
Hillcrest Farm.....	Gary, Cindy, Stephanie, & John Bertrand.....	(508) 832-8313
Hillside Acres.....	Fred & Suzie Daum.....	(814) 354-2280
Homestead Acres.....	Ron, Amy, & Molly Ruggles.....	(740) 972-1030
Hudson Pines Farm.....	David Rockefeller, Owner.....	(914) 631-1154
.....	Miranda Kaiser, Executive Director/Owner.....	(914) 631-1154
.....	John Walston, General Manager.....	(518) 851-2000
.....	Ryan Haefner, Farm Manager.....	(815) 499-0522
JEH Simmentals.....	Jack Herr.....	(717) 507-8342
KB Simmental.....	Kevin W. Bishop.....	(856) 358-3923

Membership Listing

Cross-Referenced by Farm Name

(CONTINUED)

Keystone Cattle Service.....	Cliff & Lynn Orley.....	(717) 964-2243
KNT Beef Farm	Ken, Tina, Noah, Kaleb, Kezia, & Tricia Loht.....	(717) 543-6185
Ladybug Farm.....	Ken & Mary Gumaer.....	(716) 735-7904
Limbort Livestock Company	Adam & Sarah Limbort.....	(570) 617-7620
Lenzner Farms	John E. & Geraldine Lenzner.....	(412) 741-2672
McClure Mills Farms.....	C. Arnold & Linda McClure.....	(814) 542-4748
Messick Farms	Joe & Mylin Messick.....	(717) 944-3500
.....	Sally Messick Runkle.....	(717) 944-1707
Mountain View Farm	William T. (Tom) & Barbara Vossler.....	(717) 337-1615
NikLen Valley Farm.....	Galen, Nichole, Levi, & Grace Graham	(717) 968-3643
Nor-Win Farm.....	Paul Clepper.....	(717) 960-0182
Old Foundation Farm.....	Les & Bernie Brown.....	(814) 967-3503
Palmer Cattle Co.....	William Palmer.....	(814) 282-1493
Paulus Farms.....	Millard F. Paulus IV.....	(856) 358-3980
PA Center for Beef Excellence.....	Ann Nogan.....	(717) 705-1689
Poliskiewicz Stock Farm.....	Phil, Elena, & Jesse Poliskiewicz	(570) 897-5390
Pond View Farm.....	Ricky, Debbie, & Shane Smithson.....	(443) 463-4641
Porter's Simmental Lake Ranch	Ralph E. Porter.....	(607) 565-2452
Powell's Valley Simmentals.....	Laurie Meyers.....	(717) 350-2516
.....	Annie Duncan	(717) 350-2515
SASA Farms.....	Bruce Gromlich.....	(610) 562-5737
Scherich's Simmental Farm	Rodney Scherich.....	(724) 428-3555
Serenity Hills Farm.....	Fred, Kim, Ellie, & Emily Benner	(717) 320-2303
Shoemaker's Simmentals.....	William E. Shoemaker.....	(814) 624-0667
Simme Valley Ranch.....	Jeanne White.....	(607) 423-4888
.....	Phil Paradis, Herdsman	
Smoky Valley Farm, LLC.....	Randy & Heather Rohm.....	(724) 484-0316
Sorrell Acres Farm	Gary L. & Vicki Varner.....	(717) 463-2513
Ste-Wan Farms.....	Steve & Wanda Hook.....	(570) 837-7020
.....	Michael & Rhonda Arndt.....	(570) 847-9844
Stewart's Simmental Cattle.....	Greg & Grady Stewart	(717) 350-5235
.....	Sam Stewart	(814) 952-2533
Stony Creek Simmentals.....	Gene & Elvira McMichael.....	(814) 623-7974
Sunrise Farms.....	Jonah & Abbey Broughton.....	(585) 356-0906
SVJ Farm	Valerie L. Mankey & Duane Snee	(724) 554-0446
Torock Cattle Co.....	Cody Torock.....	(724) 454-3164
W&E Farm.....	Charles, Katrina, Wyatt, & Emmitt Whipkey.....	(724) 499-5859
Wanna-B-Rich Farm	Harvey E. & Dena Baskin.....	(860) 450-6841
White House Farm	Ronald, Kathi, & Bailey Taylor	(570) 256-3482
Whitmoyer's Mountain View.....	Les & Cindy Whitmoyer.....	(717) 865-2245
Woodview Simmental Farm.....	Frank & Susan Glass.....	(724) 599-4612
Woolcock Farms	Jerry & Ginger Woolcock	(570) 458-5340



Catskill Cattle Company LLC

Registered Simmental and Crossbred Cattle

Replacement Heifers ★ Bulls

Fed Steers ★ Buying and Selling Feeder Calves

607-467-5762

**96 Laurel Bank Avenue, Deposit,
NY 13754**



Lonny Schaefer, President ★ Liz Schaefer, Vice President

email: lizz@catskillcattle.com ★ cell: 607-727-6320

www.catskillcattle.com



2011/12 NY State: YFR Farm Achievement Award Winners

FRAME SCORE CHART

Bull Hip Height (Inches)

Months of Age	Frame Score						
	3	4	5	6	7	8	9
5	37.5	39.5	41.6	43.6	45.6	47.7	49.7
6	38.8	40.8	42.9	44.9	46.9	48.9	51.0
7	40.0	42.1	44.1	46.1	48.1	50.1	51.2
8	41.2	43.2	45.2	47.2	49.3	51.3	53.3
9	42.3	44.3	46.3	48.3	50.3	52.3	54.3
10	43.3	45.3	47.3	49.3	51.3	53.3	55.3
11	44.2	46.2	48.2	50.2	52.2	54.2	56.2
12	45.0	47.0	49.0	51.0	53.0	55.0	57.0
13	45.8	47.8	49.8	51.8	53.8	55.8	57.7
14	46.5	48.5	50.4	52.4	54.4	56.4	58.4
15	47.1	49.1	51.1	53.0	55.0	57.0	59.0
16	47.6	49.6	51.6	53.6	55.6	57.5	59.5
18	48.5	50.5	52.4	54.4	56.4	58.4	60.3
20	49.1	51.0	53.0	55.0	56.9	58.9	60.9

Heifer Hip Height (Inches)

Months Of Age	Frame Score						
	3	4	5	6	7	8	9
5	37.2	39.3	41.3	43.4	45.5	47.5	49.6
6	38.2	40.3	42.3	44.4	46.5	48.5	50.6
7	39.2	41.2	43.3	45.3	47.4	49.4	51.5
8	40.1	42.1	44.1	46.2	48.2	50.2	52.3
9	40.9	42.9	44.9	47.0	49.0	51.0	53.0
10	41.6	43.7	45.7	47.7	49.7	51.7	53.8
11	42.3	44.3	46.4	48.4	50.4	52.4	54.4
12	43.0	45.0	47.0	49.0	51.0	53.0	55.0
13	43.6	45.5	47.5	49.5	51.5	53.5	55.5
14	44.1	46.1	48.0	50.0	53.0	54.0	56.0
15	44.5	46.5	48.5	50.5	52.4	54.4	56.4
16	44.9	46.9	48.9	50.8	52.8	54.8	56.7
18	45.6	47.5	49.5	51.4	53.4	55.3	57.3
20	46.0	47.9	49.8	51.8	53.7	55.6	57.6

Simmental Gestation Table Based on 285 Days

JAN	OCT	FEB	NOV	MAR	DEC	APR	JAN	MAY	FEB	JUN	MAR	JUL	APR	AUG	MAY	SEP	JUN	OCT	JUL	NOV	AUG	SEP	DEC	SEP	
1	13	1	13	1	11	1	11	1	10	1	13	1	12	1	13	1	13	1	13	1	13	1	13	1	
2	14	2	14	2	12	2	12	2	11	2	14	2	13	2	14	2	14	2	14	2	14	2	14	2	
3	15	3	15	3	13	3	13	3	12	3	15	3	14	3	15	3	15	3	15	3	15	3	15	3	
4	16	4	16	4	14	4	14	4	13	4	16	4	15	4	16	4	16	4	16	4	16	4	16	4	
5	17	5	17	5	15	5	15	5	14	5	17	5	16	5	17	5	17	5	17	5	17	5	17	5	
6	18	6	18	6	16	6	16	6	15	6	18	6	17	6	18	6	18	6	18	6	18	6	18	6	
7	19	7	19	7	17	7	17	7	16	7	19	7	18	7	19	7	19	7	19	7	19	7	19	7	
8	20	8	20	8	18	8	18	8	17	8	20	8	19	8	20	8	20	8	20	8	20	8	20	8	
9	21	9	21	9	19	9	19	9	18	9	21	9	20	9	21	9	21	9	21	9	21	9	21	9	
10	22	10	22	10	20	10	20	10	19	10	22	10	21	10	22	10	22	10	22	10	22	10	22	10	
11	23	11	23	11	21	11	21	11	20	11	23	11	22	11	23	11	23	11	23	11	23	11	23	11	
12	24	12	24	12	22	12	22	12	21	12	24	12	23	12	24	12	24	12	24	12	24	12	24	12	
13	25	13	25	13	23	13	23	13	22	13	25	13	24	13	25	13	25	13	25	13	25	13	25	13	
14	26	14	26	14	24	14	24	14	23	14	26	14	25	14	26	14	26	14	26	14	26	14	26	14	
15	27	15	27	15	25	15	25	15	24	15	27	15	26	15	27	15	27	15	27	15	27	15	27	15	
16	28	16	28	16	26	16	26	16	25	16	28	16	27	16	28	16	28	16	28	16	28	16	28	16	
17	29	17	29	17	27	17	27	17	26	17	29	17	28	17	29	17	29	17	29	17	29	17	29	17	
18	30	18	30	18	28	18	28	18	27	18	30	18	29	18	30	18	30	18	30	18	30	18	30	18	
19	31	19	1	19	29	19	29	19	28	19	31	19	30	19	31	19	31	19	31	19	31	19	31	19	
20	1	20	2	20	30	20	30	20	1	20	1	20	1	20	1	20	2	20	1	20	1	20	1	20	1
21	2	21	3	21	31	21	31	21	2	21	2	21	2	21	2	21	3	21	2	21	2	21	2	21	2
22	3	22	4	22	1	22	1	22	3	22	3	22	3	22	3	22	4	22	3	22	3	22	3	22	3
23	4	23	5	23	2	23	2	23	4	23	4	23	4	23	4	23	5	23	4	23	4	23	4	23	4
24	5	24	6	24	3	24	3	24	5	24	5	24	5	24	5	24	6	24	5	24	5	24	5	24	5
25	6	25	7	25	4	25	4	25	6	25	6	25	6	25	6	25	7	25	6	25	6	25	6	25	6
26	7	26	8	26	5	26	5	26	7	26	7	26	7	26	7	26	8	26	7	26	7	26	7	26	7
27	8	27	9	27	6	27	6	27	8	27	8	27	8	27	8	27	9	27	8	27	8	27	8	27	8
28	9	28	10	28	7	28	7	28	9	28	9	28	9	28	9	28	10	28	9	28	9	28	9	28	9
29	10	29	11	29	8	29	8	29	10	29	10	29	10	29	10	29	11	29	10	29	10	29	10	29	10
30	11	30	12	30	9	30	9	30	11	30	11	30	11	30	11	30	12	30	11	30	11	30	11	30	11
31	12			31	10			31	12			31	12	31	12			31	12			31	12		
NOV		DEC		JAN	FEB	MAR	APR	MAY	MAR	APR	MAY	JUN	MAY	JUN	JUN	JUL	JUL	AUG	SEP	SEP			OCT		



Live Internet Bidding
Online Webcast of Auctions
Real Time Bidding
Tag/Board Sales
Online Only Auctions
Marketing Consultants

Check out our upcoming Sales at www.COWBUYER.com

Contact us for your upcoming auction!!

Like us on Facebook!!

Meet The COWBUYER Staff:

Aaron Ray Tompkins - All Livestock	336-363-4639
Chad Griffith -Dairy Cattle	513-546-2315
Jake Bailey - Beef Cattle	540-241-1965
Alex Weller - Sheep, Dairy Goat, & Beef Cattle	540-294-4800
Ryan Zimmerman- Dairy Cattle	717-398-7365
Will Strecker - Beef Cattle, Club Calves & Meat Goats	540-784-8405



Sharing the Passion

We understand the passion show families pass on from generation to generation. For over 75 years, we have shared that same passion through our commitment in providing lightweight aluminum trailers with stylish design, strong construction and solid resale value.



RUFF NECK shown with optional FINAL DRIVE package, aluminum wheels, plexiglas and spare.



MAVERICK LS BUMPER HITCH



TOWING BODIES



PUNCH PANEL GOOSENECK

Call Eby today for more information or to find a dealer near you.

M.H. Eby, Inc. (headquarters)
PO Box 127, 1194 Main St.
Blue Ball, PA 17506

800-292-4752

mheby.com

ABS

THE WORLD LEADER IN BOVINE GENETICS



Dream On

Still the One!

- ▶ Heterozygous black, DNA tested homozygous polled
- ▶ Leading source of calving ease, phenotype and indexes for the breed
- ▶ Perennial #1 bull for registrations in the breed
- ▶ The best return on investment for your semen dollar

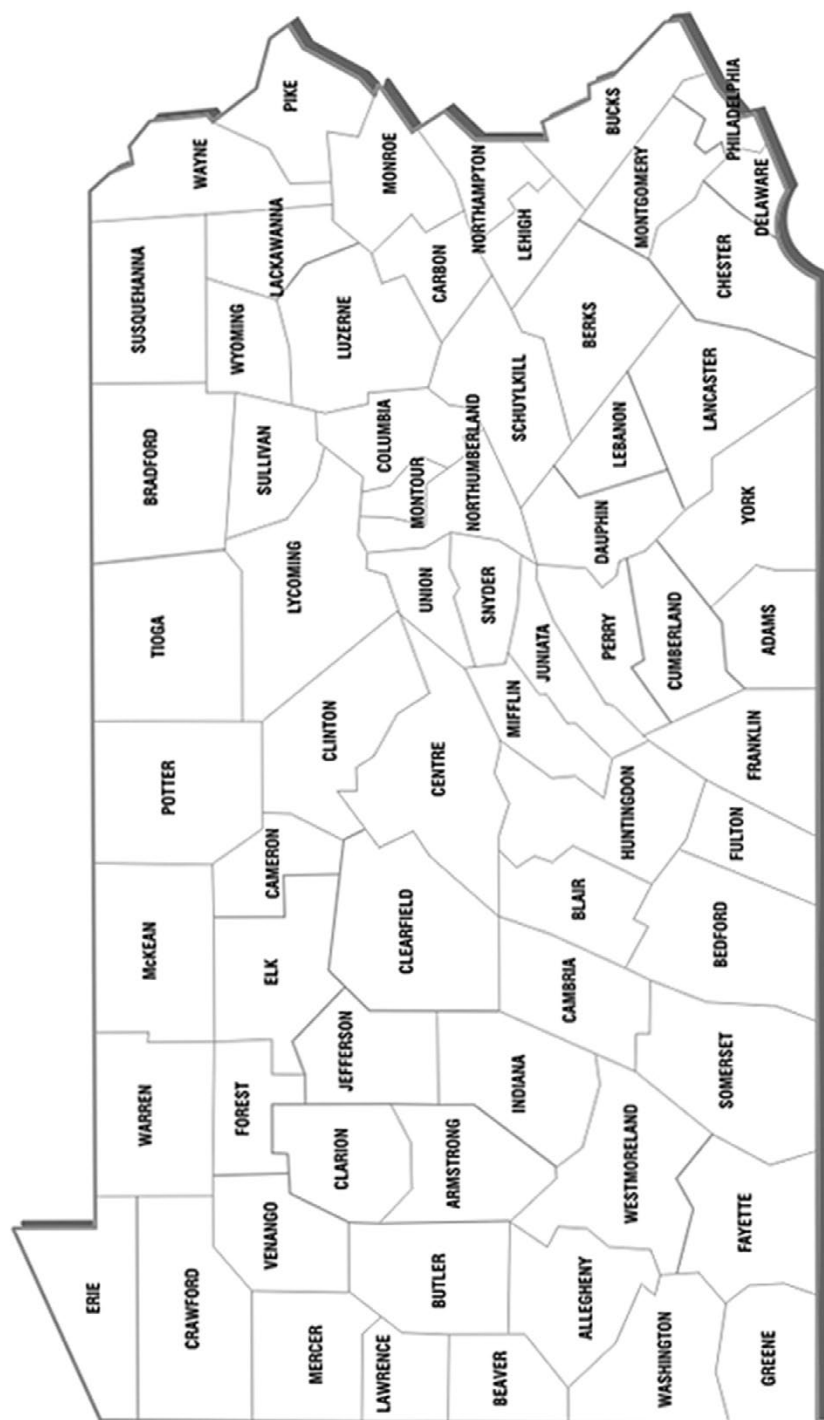


Call your local ABS rep or call 1-800-ABS-Stud

Or call Doug Baker, District Business Manager, 570-850-1831

On the web -- Complete Sire listing and updates

www.absbeef.com



Member Farm Locations

Pennsylvania...

Adams County

Mountain View Farm

Allegheny County

Lenzner Farms

Armstrong County

Bussard, Gary & Paulette

Bedford County

Feight's Farm

Feight Show Stock

Shaffer, Paul M.

Shoemaker's Simmentals

Stony Creek Simmentals

Berks County

SASA Farms

Blair County

2nd Chances Cattle Co.

Clarion County

Hillside Acres

Clearfield County

Harris Farms

Columbia County

Woolcock Farms

Crawford County

Old Foundation Farm

Palmer Cattle Co.

Cumberland County

Nor-Win Farm

Dauphin County

Circle S Acres/Stockyard Style

Curry Wagner Simmentals

Messick Farms

Nice, Brent

Powell's Valley Simmentals

Stewart's Simmental Cattle

Elk County

Elk County Simmentals

Fayette County

Cher-O-Kee Cattle Co.

Franklin County

Brad-Fields Farm

Greene County

Campbell Land & Cattle LLC

Cassyle Valley Simmentals

Frosty Springs Farm

Miller, William & Kathleen

Scherich's Simmental Farm

W&E Farm

Huntingdon County

E&R Farms LP

McClure Mills Farms

Indiana County

Woodview Simmental Farm

Juniata County

Serenity Hills Farm

Sorrell Acres Farm

Lebanon County

CLO Simmentals

Double "B" Venture

HEB Farms

JEH Simmentals

Whitmoyer's Mountain View

Luzerne County

White House Farm

Mercer County

Downs, David & Annette

Mifflin County

Goss Family Farm

KNT Beef Farm

Northampton County

Poliskiewicz Stock Farm

Perry County

FWB Simmentals

Schuylkill County

Limbert Livestock Co.

Schadel, Neal & Darlane

Snyder County

Ste-Wan Farms

Tioga County

Druck, Philip

Yenango County

Harvest Plantation

Washington County

Carlisle Farm

Smoky Valley Farm

SVJ Farm

Westmoreland County

Torock Cattle Co.

York County

Codorus Furnace Farm

NikLen Valley Farm

Weir, Mark, Lisa, & Elizabeth

Other states...

Connecticut

Fenton River Farm

Maryland

Folly Farm

Highfields Farm

Pond View Farm

Massachusetts

Hillcrest Farm

New Jersey

Double RD Farm

KB Simmental

Paulus Farms

New York

Back Road Ranch

Catskill Cattle

Elm Side Farm

Hudson Pines Farm

Ladybug Farm

Porter's Simmental Lake Ranch

Simme Valley Ranch

Sunrise Farms

Ohio

Crum's Circle C

Double R Simmentals

Homestead Acres

Texas

Wanna-B-Rich Farm

West Virginia

Buena Vista Simmentals

CAM Cattle Co.

Classic Farms

RULES AND BY-LAWS
PENNSYLVANIA SIMMENTAL ASSOCIATION, INC.
BY-LAWS
ARTICLE 1
NAME

1. The name of this corporation shall be the Pennsylvania Simmental Association, Inc.

ARTICLE II
AIMS AND OBJECTIVES

1. The Pennsylvania Simmental Association has as its primary objective the development and promotion of the Simmental breed of cattle in the State of Pennsylvania. It is believed that the Simmental Breed can make an important contribution to the improvement of the cattle industry in Pennsylvania.

ARTICLE III
MEMBERSHIP

1. Application for membership must be made in writing to the Secretary-Treasurer of the Association.
2. The Board of Directors shall have the power to accept or reject any applications for membership. The Board of Directors shall have the power to suspend or expel any member who conducts himself in a manner detrimental to the Association or fails to comply with the rules and regulations without refund of membership fees or dues.
3. A member whose membership has been revoked must make a written application of reinstatement and can be reinstated only after having received three-fourths (3/4) affirmative vote from the Board of Directors.
4. Legal Partnerships or Incorporated Companies shall specify in writing the person authorized to vote or act in their behalf at any meeting of the Association.
5. Members may vote by proxy at the Annual Meeting if the delegate has in his possession the proxy of the undersigned membership, executed and sworn before a Notary Public.
6. Active Members shall be owners or breeders of cattle who pay the membership fee, and who are in good standing.
7. Associate Members are non-voting members who may be interested in advancement of the Association. Associate Members may not vote or hold elective offices.
8. (Amended January 14, 2006) Junior Members shall be those under 22 years of age who have paid the prescribed fee. Junior Members are not entitled to vote or to hold elective office except as herein after provided.
9. Honorary Members are individuals who have made an outstanding contribution to the development of the Simmental Breed in the State of Pennsylvania. They are elected by the general membership of the Association provided they have been recommended for such appointment by a prior resolution of the Board of Directors. Honorary memberships are not entitled to vote and may not hold elective offices.
10. Annual Dues: \$40.00 for Senior Members, \$10.00 for Junior Members.

ARTICLE IV
OFFICERS AND DIRECTORS

1. **Duties of Officers**
 - a. The President shall be the Chief Executive Officer of the Association. He shall preside at its meetings. He shall carry on the business of the Association under the Articles of Incorporation, the by-laws, and the instructions of the Board of Directors.
 - b. The Vice President, in the absence of the President, or at his request, shall perform the duties of said officer.

c. The Secretary-Treasurer may be a member of the Board of Directors, or he may be appointed or hired by the Directors. He shall manage and administer the business affairs of the Association in accordance with the policy and directives from the Board of Directors as communicated to him by the President. He shall be the official custodian of the seal and the records of the Association. He shall see to the financial affairs of the Association.

2. Duties of the Directors

a. (Revised March 28, 1986) The affairs of the Association shall be managed by a Board of Directors. Adult Directors shall be elected by written ballot at the Annual Meeting of the Association. The Board of Directors shall consist of ten (10) Adult members and one (1) Junior member. Each adult Director shall be limited to two (2) three (3) year consecutive terms. He shall again be eligible for re-election after one (1) year's absence. The Junior Director shall be elected by written ballot at the Annual Meeting of the Pennsylvania Junior Simmental Association and shall serve a one (1) year term of office and shall be limited to two (2) consecutive terms. He shall again be eligible for re-election after one (1) year's absence.

b. The Directors shall elect from among the active members of the Pennsylvania Simmental Association a President and Vice President whose terms of office shall be one (1) year or until the next annual meeting. The Board of Directors may appoint additional officers as they see fit in order to carry out efficiently the affairs of the Association. However, only active paid up members in good standing may be officers.

c. The Board of Directors shall have the authority to appoint anyone that they see fit to the Board of Directors, to serve a one (1) year term.

d. Each person who shall serve as a Director or Officer of the Association shall be indemnified by the Association against all costs and expenses incurred by or imposed upon him, in connection with or resulting from any action, suit or proceeding to which he is, or may be made a party, by reason of his being or having been a Director or Officer of the Association. Such indemnifications shall include settlements made in amounts approved by the Board of Directors at the time such settlement is effected, whether or not such person is a Director or Officer at the time such costs are incurred by or imposed upon him. Except, the indemnifications shall not apply where he shall be finally adjudged to be liable by reason of having been negligent, guilty of misconduct or otherwise derelict in the performance of his duty as an Officer or Director. The rights of indemnification herein provided shall not be exclusive of other rights to which such person may be entitled as a matter of law.

ARTICLE V MEETINGS

1. Membership Meetings

a. An Annual Membership Meeting shall be held once in every calendar year with a maximum time of fifteen (15) months between meetings. The time and place shall be designated by the Board of Directors. All members will be notified by letter or in the official organ of the Association at least thirty (30) days prior to such meeting. The order of business shall be mentioned in the notice of the meeting.

b. A quorum for Annual Membership Meeting shall consist of the Active Members in good standing present.

c. Only Active Members who are in good standing and those whose membership is paid are entitled to vote at any Annual Membership Meeting.

d. Standard parliamentary procedure will be followed at all meetings of the Association membership and at all meetings of the Board of Directors.

e. Special membership meetings may be held at the discretion of the Board of Directors. All members will be notified by letter at least ten (10) days prior to the meeting.

date. Special business shall be mentioned in the notice and no other business shall be transacted.

2. Board of Directors Meeting

a. The regular meeting of the Board of Directors shall be held each year in conjunction with and at the same place as the Annual Membership Meeting.

b. In addition to the meeting provided for in paragraph "a" above, the Directors shall meet annually at a time and place to be selected by the Board of Directors. This meeting shall occur approximately six (6) months prior to the next Annual Membership Meeting.

c. Special Meetings of the Board of Directors may be held on call of the President by giving ten (10) days notice in writing of time, place and purpose.

d. Five (5) Directors shall constitute a quorum at any Directors Meeting.

ARTICLE VI COMMITTEES

1. Rules Committee

It shall be the duty of this Committee to interpret all rules and regulations, and to recommend such changes as they deem necessary to the Board of Directors for their approval.

2. Financial Committee

The Secretary-Treasurer shall be the Chairman of the two (2) Directors. Their purpose shall be to prepare a budget and submit it to the Board of Directors for their approval. They shall also make recommendations to the Board of Directors for the investment of available funds.

3. Exhibition Committee

This Committee shall make recommendations pertaining to live animal and carcass display.

4. Membership Committee

Shall promote and encourage membership in the Association.

5. Sales Committee

Shall set rules which uphold the performance and quality of the Simmental cattle in state sanctioned sales.

6. Promotion Committee

Shall make recommendations concerning the advertising and promotion of Simmental cattle to insure the proper image at sales.

ARTICLE VII BY-LAW AMENDMENTS

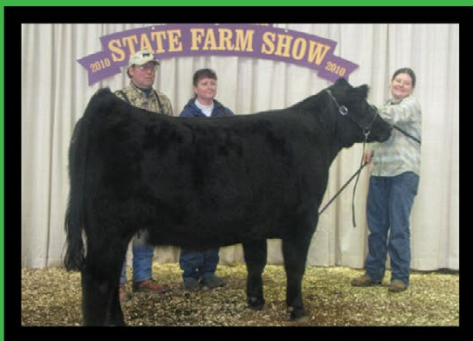
1. The Board of Directors shall have the power to amend the By-Laws of this organization by a three-fourths (3/4) majority vote.
2. Any change or revision of the By-Laws as a result of Board action shall become effective within thirty (30) days after which such change is published and every member is notified.
3. Any amendments made by the Board of Directors may be suspended if the Secretary-Treasurer received a petition signed by ten percent (10%) of the membership within sixty (60) days from the date of notification of the change or revisions.
4. Any such action of the Board of Directors may be subject to the approval of the membership at the next Annual Membership Meeting.

STE-WAN FARMS

Breeding today for tomorrow's success

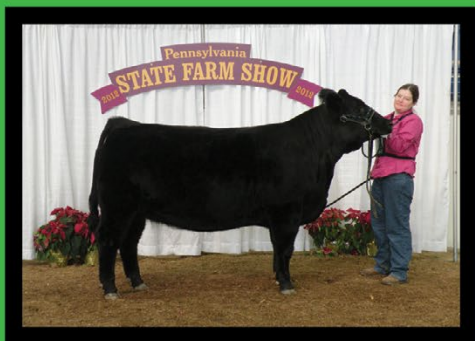


WINSLOW'S JAIL BREAK



MF SWEET DREAMS

**We breed with top A-I bulls
Broker, Lock N Load, Revival,
One Eyed Jack, Pays to Believe**



MF MISS HURRICANE



CVFC LADY UPGRADE

**Steve & Wanda Hook
Mike, Rhonda, Cheyenne Arndt**

4751 New Berlin Hwy.
Middleburg, Pa. 17842

570-837-7020
stewanfarms@verizon.net

Pennsylvania Simmental Association

2015 Members of the Year

Junior of the Year:

DJ Gromlich
(not pictured)



Family

Family of the Year:

The Weirs

Senior of the Year:

Cliff Orley



Senior



Breeder

Breeder of the Year:

**Stewart's
Simmental Cattle**

Pennsylvania Junior Simmental Association

For full membership listing, please visit our website www.pajrsimmental.com!

PJSA Advisors

Sarah Limbert
332 Bethel Road
Pine Grove, PA 17963
(570) 617-7620
sarah13mae@hotmail.com

Rhonda Arndt
441 Hillside Drive
Middleburg, PA 17842
(570) 847-9844
farmchic3@hotmail.com

Nichole Graham
13820 Wolf Road
Felton, PA 17322
717-968-6635
niklenvally@aol.com

Officers and Royalty

President

Wyatt Fox

169 Dellville Road
Duncannon, PA 17020
(717) 649-2192

Treasurer

Sara Downs

194 Stock Farm Road
Jackson Center, PA 16133
(724) 376-7195

PSA Queen

Sara Downs

194 Stock Farm Road
Jackson Center, PA 16133
(724) 376-7195

Vice President

Donald Baron

18469 Price Road
Saegertown, PA 16440

Secretary

Lana Wolfgang

704 Breezewood Drive
Mechanicsburg, PA 17055
(717) 991-5812

PSA Princess

Lana Wolfgang

704 Breezewood Drive
Mechanicsburg, PA 17055
(717) 991-5812

Pennsylvania Junior Simmental Association

Application for Membership

www.pajrsimmental.com

Member Name: _____ Birth Date: _____

Farm Name: _____

Address: _____

City: _____ State: _____ Zip: _____

Telephone Number: (_____) _____ County: _____

E-mail: _____ Web Site: _____

\$10.00 Junior Membership _____

Signature _____ Date: _____

Send to:

Rhonda Arndt
441 Hillside Drive • Middleburg, PA 17842
Phone: (570) 847-9844 • E-mail: farmchic3@hotmail.com

Proudly serving Pennsylvania's Agriculture Communities since 1985.

- Sale Catalogs
- Directories
- Newsletters
- Banners
- Postcards
- Business Cards
- Sell Sheets
- Yard Signs



...and many more creative ideas!

Design • Print • Mail • Wide Format



GALLAGHER

PRINTING, INC. 
www.gallagherprint.com

717.838.1527
Fax: 717.838.5715

601 W. Main Street
P.O. BOX 382
Palmyra, PA 17078

Frey's

LIVESTOCK SUPPLY



Show Supplies

Aluminum Livestock Trailers ~ Show Feeds

Clipper Sales, Repairs and Sharpening

Border Collies

Weaver Grooming Supplies

Reg. Sim/Angus

www.freysupply.com

Fritz and Nancy Frey

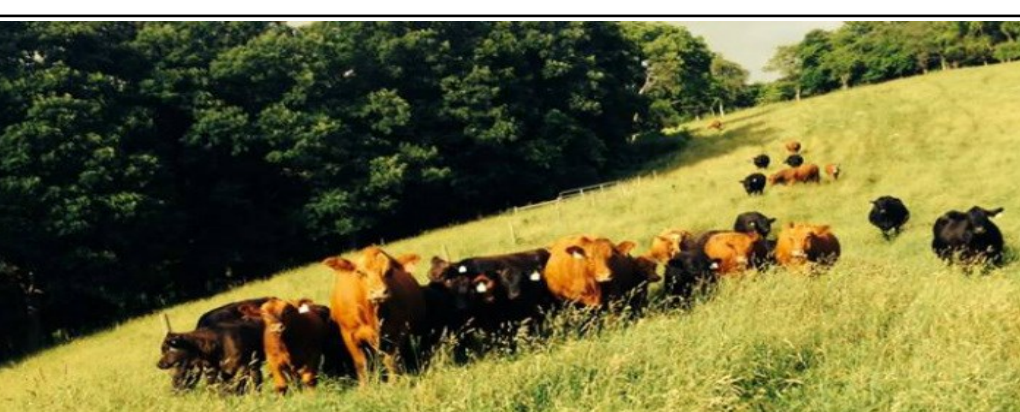
1664 Furniss Rd

Drumore PA 17518

ph 717-548-1351

fax 717-548-0376

ffrey@freysupply.com



**Red and
Black Quality
Simmental
Cattle**

Frosty Springs Farm

**For
Sale:**

- Heifers
- Bulls
- Steers
- Donkeys
- Sim x Red Angus

House Phone: 724-627-8271

Jim Cell: 724-986-8502

Billie Cell: 724-998-4355

James and Billie Cowell

1214 Garards Fort Road, Waynesburg, PA 15370

Email: frostyspringsfarm@hotmail.com

Website: www.frostyspringsfarm.com

Follow us on Facebook: Frosty Springs Farm

CAM Cattle Co. -Chris and Alissa Mytar

Livestock also available for viewing

FSF Livestock Equipment

James Cowell

(724) 986-8502

frostyspringsfarm@hotmail.com

***Stronghold Chutes**

***Tru-Test Scales**



Very High Caliber



....yet very affordable!

- Long lasting aluminum construction that resists corrosion.
- The industry's original fully riveted trailer which is stronger than a welded trailer.
- Superior full frame gate construction for reliable containment.
- Dense raised diamond plate tread floor for sure footing.
- Numerous gate and door options for convenience.
- Available from 16' to 32' for versatility
- Embossed side panels for greater strength.
- Top dollar at trade in time for best realized value.

CALL YOUR AUTHORIZED WILSON DEALER FOR MORE INFORMATION!

EMM
SALES & SERVICE, INC.

(800) 288-2081
www.emmsales.com
141 Zooks Mill Road
Brownstown, Pa 17508

CONSIDER THE BAR RAISED.



Vermeer mower conditioners combine exceptional performance, flexibility and convenience, and give operators control in even the toughest mowing conditions. The Q3™ Cutter Bar provides optimum performance with reduced horsepower requirements and is backed by a Vermeer 3-year cutter bar warranty. The Quick-Clip® Blade Retention System and Quick-Change™ Shear Ring simplify changing blades and repairing sheared discs. As far as mower conditioners go – the MC2800, MC3300 and MC3700 are a cut above the rest.

DECIDEDLY DIFFERENT.



VR Series wheel rakes from Vermeer deliver the extra strength, widestance balance and reliability needed to handle a heavy diet of haying – starting with the first cut. Handle different crops and conditions and reset windrow widths with the drop of a pin. Plus, you can turn hay in the center of the swath with optional center splitter wheels. It's a wheel rake that's decidedly different.



Vermeer®
WILKINS AND SON EQUIPMENT

1708 Pinchot Road, Saxton, PA 16678

Office: 814-635-3392 Cell: 814-502-0968

Email: wilkinsequip@yahoo.com

Fax: 814-635-2993

2016 PJSA Royalty



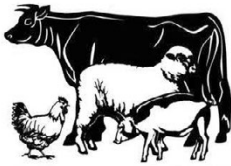
Left:

**PJSA Queen
Sara Downs**

Right:

**PJSA Princess
Lana Wolfgang**

For PJSA news,
please see our website
www.pajrsimmental.com



Don Fair **NUTRITIONAL CONSULTING**

Incorporated

**2028 YOUNTS ROAD
BEDFORD, PA 15522
(814) 624-0776 - PHONE
(814) 624-0864 - FAX
dfncinc@yahoo.com**

OUR SERVICES INCLUDE:

- Complete "seed to feed" consulting
- Custom livestock ration balancing
- Forage testing and analysis
- Hoof care
- Records and performance analysis
- Prompt on-site technical support
- Herd body condition monitoring
- Evaluation of feed ingredients
- Farm seeds and crop planning
- Ongoing evaluation of current research, new products and ideas
- Bag & Liquid Feed delivery
- We handle Bagged Feeds, Minerals, Supplement Tubs, Liquid Feeds and Farm Seeds

"...Serving You, The Farmer, With Integrity!"

Call today to set an appointment with:

Donald Fair, PAS

(814) 285-6740



Dennis Browell

(814) 285-0399



Adam Kauf, PhD.

(814) 505-4373



Bruce Weaver

(814) 322-2506



Derrick Carpenter

(814) 494-2941



"Raising your cows to a new level"



STEIN-WAY EQUIPMENT

Built Stronger. Lasts Longer.



Auto Release Self-Locks

Also selling...

- Custom fit barn gates
- Slant bar feed panels
- Stock size pasture gates
- Jug, Miraco & Ritchie waterers



NEW! Bale Boss II - Designed for Large Square Bales



STEIN-WAY
Equipment

2155 Riddlemoser Road
Manns Choice, PA 15550

814-733-2775 • 1-888-605-2422

www.steinwayequipment.com

Simme Valley

Producing Stylish
Predictable
Simmental Cattle
that perform in and
out of the show ring



Simme Valley Zipper – 9-11-12
JF Milestone x CLO Sweet Sensation (War Diva)
Illinois State Fair Senior Calf Champion
Dam was flushed in coop with Hudson Pines Farm

Show cattle & breeding stock for sale at all times. Bull calves & show steers available through the summer. We strive for Satisfied Customers. Our cattle work for us and their new owners, performing on grass in the summer and hay in the winter.

Watch for our consignments to the
Gettysburg Stars & Stripes Sale on the 1st Sat in May

Jeanne White, Owner
Phil Paradis, Herdsman
Groton, NY
607-423-4888 cell
Jeanne@SimmeValley.com
www.SimmeValley.com

Visitors Always Welcome



ASA member #8945
Certified BQA



CURRY WAGNER SIMMENTALS



www.CURRYWAGNERFARMS.com

Visitors always welcome!



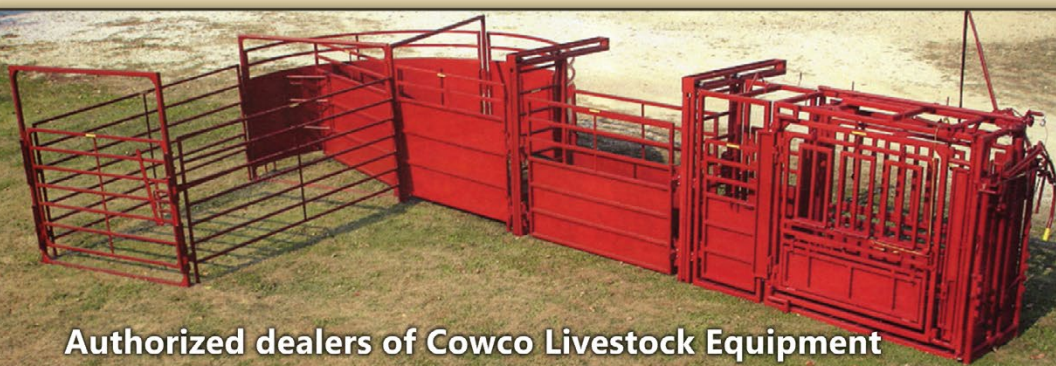
Lazy H Glory Z906

Don Hughes

Bred Heifers

Cow/calves

Bulls



Authorized dealers of Cowco Livestock Equipment

Curry Wagner, Sr.

717-991-0387

Curry Wagner, Jr.

717-943-2262

1423 Sandbeach Road • Hummelstown, PA 17036

SHOEMAKER'S SIMMENTALS

2006 PA Farm Show Premier Breeder and Exhibitor



Shoemaker's Real Deal

2006 PA Farm Show Grand Champion Bull

Shoemaker's Miss Marker

STF Mr Momentum H508

Herd Sire - Shoemaker's Commander



Commander Offspring Offer Excellence in the Show Ring



Shoemaker's Lady Precept

2006 PA Farm Show
Grand Champion Simmental Heifer



Shoemaker's Salome

2006 PA Farm Show - Junior Show
Reserve Champion Simmental Heifer

Commander Offspring Also Offer Superior Performance

2003-2004 Pennsylvania Bull Test
2nd Highest Indexing Bull
3 of The Top 6 Highest Indexing Bulls

2005-2006 Pennsylvania Bull Test
2nd Highest Indexing Bull
3 of The Top 5 Highest Indexing Bulls

William Shoemaker

3839 Milligans Cove Road • Manns Choice, PA 15550

Telephone: (814) 624-0667 Cell: (412) 721-8814

Email: shoesim@yahoo.com

Mountain View Simmentals

Purebred Simmental Beef Cattle



***Visitors are
always welcome.***

***Call for
directions.***



**Long yearling and yearling bulls for sale off the farm —
AI bred and MVS Maximus' sons.**

Call Tom at 717-752-6822 to see these great bulls.

**Host for the annual *Gettysburg Stars and Stripes Sale*
the first Saturday in May.**

Tom and Barbara Vossler
665 Knoxlyn Road
Gettysburg, PA 17325
717-337-1615 or cell 717-752-6823
email: tvossler@comcast.net

