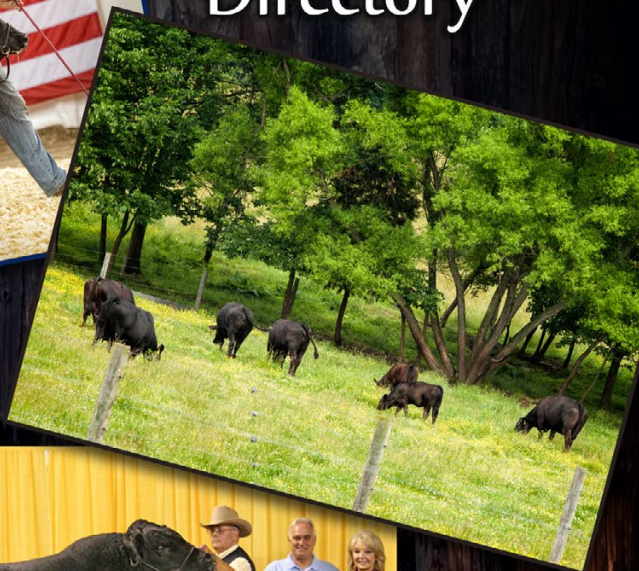


# 2014 Membership Directory



# Pennsylvania Simmental Association





# Hudson Pines Farm



*Berthas Abby 63S*



*Perfection R504*

Owned with Bornemann Simmentals, MO



*Queen Sazerac P94*



*Caliente U335*

*Watch for the influence of these powerful donors and  
take advantage of the opportunity to acquire their genetics  
Sunday, November 16<sup>th</sup>, 2014 at The Living Legacy X.  
Sale will be held at Reality Farms just outside of Louisville, KY.*



David Rockefeller, Owner • Miranda Kaiser, Owner/Executive Director  
John Walston, General Manager • 518.851.2000  
Ryan Haefner, Farm Manager • 815.499.0522  
Jeff Queckboerner, Herdsman  
Tyler Babbs & Jordan Egersman, Show and Sale Cattle

[www.hudsonpinesfarm.com](http://www.hudsonpinesfarm.com)



## MESSICK FARMS

BREED LEADING GENETICS FOR 2014

### "MF RISING STAR Z660"



### Hancock x Momentum

Grand Champion Bull 2014 PA Farm Show

BW: 82 lbs., WW: 828 lbs., Show Weight 1990 lbs.  
as a March yearling bull

Messick Farms Bulls excel in calving ease, growth and eye appeal.  
They come easy, grow fast and will make you money!

### EXCEPTIONAL HEIFERS

High Selling Female  
2013 PA Fall Classic  
purchased by  
Sky Mile Farms

### POWERFUL BULLS

2 of the top 3 bulls  
at the 2013 PA bull test  
bred by Messick Farms

### "MF HANCOCK U415"



**- Invest in the Best -  
Purebred Simmental and SimAngus**

Call us today!



**Mylin, Joe, Sally and Caitlin**  
2835 Schoolhouse Road, Middletown, PA 17057  
(717) 985-1021 or [messick85@comcast.net](mailto:messick85@comcast.net)





Introducing....

# PVSM Stylish Mooves



Semen available April 2014.

	CE	BW	WW	YW	MCE	MM	MWW	API
EPD	14.1	0.9	55.8	86.8	10.2	18.7	46.6	136.1

## PVSM Stylish Mooves

B.D. 4-1-13 ASA #2754669  
BW: 80lbs. Adj. WW: 825lbs.

1/2 Simmental, 1/2 Angus

Silveiras Style 9303 x

PVSM Miss Mooey (Dream On)

### 2013 KILE

SimSolutions Cow/Calf Pair Grand Champion  
SimSolutions Grand Champion Bull, and  
tied for Reserve Supreme Bull

### 2014 PA Farm Show

Grand Champion AOB Bull

*PVSM Stylish Mooves offers a unique package of calving ease, soundness, style, and super hair combined with a big top, square hip, and tremendous capacity.*

OUR CONSIGNMENTS TO...

# STARS & STRIPES SALE MAY 3RD, 2014



Cow/Calf Pair

## PVSM Huckleberry

BD: 2-10-12 • Purebred Simmental

GWS Ebony's Trademark 6N X

PVSM Mistletoe

*Upgrade heifer calf at side,  
born 1-30-14.*



Bred Heifer

## PVSM Ginger Snap

BD: 10-14-12 • Purebred Simmental

SAS T101 Sweet Meat X

LLL Miss Fortune

*A.I. bred to Mr NLC Upgrade U8676  
– sexed heifer semen.*

## Also Selling at Stars & Stripes:

PVSM Honey Bear • BD: 3-30-12 • Purebred Simmental

Kappes Trailblazer S516 X Mohlers Ms L12

*Longs Shear Pleasure bull calf at side, born 3-10-14.*

**PA Farm Show Premier Simmental  
Breeder for four consecutive years!**

## POWELL'S VALLEY SIMMENTALS

*We produce gentle, functional cattle that perform as well  
in the pasture as they do in the show ring.*

Laurie Meyers

470 Million Dollar Road, Halifax, Pa. 17032

717-350-2516

Email: [Laurie@pvsimm.com](mailto:Laurie@pvsimm.com)

Stop in or call anytime--we love to talk cattle.

*Please visit our website, [www.pvsimm.com](http://www.pvsimm.com)*



## Table of Contents

Table of Contents .....	4
Index to Advertisers .....	4
President's Message .....	6
PSA Officers and Directors .....	8, 38
Upcoming Events .....	9
Simmental History .....	10-11
PSA Membership Listing-By Last Name .....	13-38
PSA Award Recipients .....	35
PSA Application for Membership .....	39
PSA Membership Listing-Cross-Referenced by Farm Name .....	40-41
Frame Score Chart.....	43
Gestation Table.....	44
Performance Advocate Program .....	47
Map and Index of Member Farm Locations .....	48-49
Rules and By-Laws.....	50-52
PJSA Officers .....	55
PJSA Application for Membership.....	55
PJSA Membership Listing.....	57-61

## Index to Advertisers

Agri-Trac, Inc.....	19	Mountain View Simmental, Inc. .	64
Allegheny Meadows .....	15	NikLen Valley Farm.....	19
American Simmental Association...11		Penn State University.....	56
CAM Cattle Company .....	62	Porter's Lake Simmental Ranch ..	58
Campbell Show Calves . Back Cover		Powell's Valley Simmentals.....	2-3
Double RD Farm.....	15	Select Sires.....	25
E&R Farms .....	31	Serenity Hills Farm.....	21
Eastern States Livestock Systems	29	Shoemaker's Simmentals.. Ins. Back	
Elk County Simmentals .....	17	Simme Valley Ranch.....	63
EMM Sales & Service .....	42	Stein-Way Equipment .....	53
Frosty Springs Farm.....	62	Stewart's Simmental Cattle.....	32-33
Gallagher Printing.....	37	Stony Creek Simmentals.....	17
Hillcrest Farm .....	5	SVJ Cattle Co./D&D Cattle Co. .	46
Hudson Pines ..... Inside Front Cover		Virginia Club Calf Producers.....	12
Keystone Cattle Service.....	27	Woodview Simmental Farm.....	17
Ladybug Farm.....	15	Woolcock Farms .....	7
Messick Farms .....	1	Zimmerman's Custom Freezing...31	

Our special thanks to these advertisers for making this directory possible.

Please visit the PSA website, [www.pasimmental.com](http://www.pasimmental.com)

# **Hillcrest Farm**

## **Auburn, Ma**

### **Registered Simmentals**

### **Registered Polled Herefords**

### **BQA certified herd**

***The Bertrand Family***  
**Gary, Cindy, Stephanie and John**



**Cow calf operation with Breeding stock and steers**  
**Available for sale. Vistors always welcome.**

**148 Millbury St. Auburn, MA 01501**  
**508-832-8313 or [Hillcrest1011@gmail.com](mailto:Hillcrest1011@gmail.com)**  
**Members of**  
**Southern New England Simmental Assn.**  
**[SNESA.org](http://SNESA.org)**



## A Message from the President of the Pennsylvania Simmental Association

Dear Simmental Friends,

As I write this, Pennsylvania is having the coldest weather that we have seen in twenty-plus years. As cattlemen, we can all appreciate the value of the Simmental mother cow that will lie down, calve unassisted, and get that vigorous calf up and nursing before it freezes.

We are very pleased that the Pennsylvania Farm Show has allowed Simmental percentage cattle to show in the All Other Breeds Show. In their first year of showing, SimGenetics cattle accounted for half of the entries in the AOB show. They were chosen as Grand and Reserve Grand Champion Heifers, and Grand Champion Bull in the Open Show, and Grand and Reserve Grand Champion Heifers in the AOB Junior Show!

With Simmental genetics in great demand across all segments of the cattle industry, Simmental breeders have the opportunity to breed and market many different types of cattle—including those bred for the commercial cattleman, purebred seedstock, the show ring, and even for the clubby market. Please remember that our Pennsylvania Simmental Association sponsored sales—the Pennsylvania Spring Female Sale and the Pennsylvania Fall Classic—are excellent sales to buy Simmentals and also a great way to market your Simmental genetics.

Congratulations to Cliff Orley on becoming the new American Simmental Association Eastern Trustee. Cliff will provide great representation for small and large breeders alike in Pennsylvania and across the Eastern Region.

I would like to take this opportunity to thank Annette Downs and Sally Runkle for their years of dedicated service to the Pennsylvania Junior Simmental Association. They have helped many, many juniors become established and contributing members of the cattle industry and will definitely be missed.

I will end with a catch-phrase that became popular in 1970 near the beginnings of Simmental genetics in North America, but remains extremely relevant today—*"Breed 'em all Simmental!"*

Sincerely,  
Laurie Meyers

# Woolcock farms



**WF BLACK HOCK  
RESERVE CHAMPION BULL CALF  
2014 PA FARM SHOW**

**Purebred and Crossbred  
Cattle for Breeding Stock  
and the Show Ring**

**Jerry & Ginger Woolcock**  
38 Reese Road • Orangeville, PA 17859  
Telephone: (570) 458-5340 • gwoolcock@gmail.com



## Pennsylvania Simmental Association

### Officers

**Laurie Meyers, President**  
470 Million Dollar Road  
Halifax, PA 17032  
Telephone: (717) 350-2516  
E-mail: Laurie@pvsimm.com

**Bradley Feight, Vice President**  
480 East Graceville Road  
Breezewood, PA 15533  
Telephone: (814) 502-8973  
E-mail: feibra60@pct.edu

**Vicki Varner, Secretary**  
8436 Mountain Road  
McAlisterville, PA 17049  
Telephone: (717) 463-2513  
E-mail: gvarner@centurylink.net

**Jeff Feight, Treasurer**  
480 East Graceville Road  
Breezewood, PA 15533  
Telephone: (814) 735-3797  
E-mail: JNSSimmentals@yahoo.com

### Directors

**David Downs**  
194 Stock Farm Road  
Jackson Center, PA 16133  
(724) 376-7195  
ddowns2011@hotmail.com

**Annie Duncan**  
470 Million Dollar Road  
Halifax, PA 17032  
(717) 350-2515  
simmtalker@yahoo.com

**Ron Dziembowski**  
10 Town Farm Road  
Dudley, MA 01571  
(508) 868-8836  
RLUVSANGUS@aol.com

**Bradley Feight**  
480 East Graceville Road  
Breezewood, PA 15533  
(814) 502-8973  
feibra60@pct.edu

**Jeff Feight**  
480 East Graceville Road  
Breezewood, PA 15533  
(814) 735-3797  
JNSSimmentals@yahoo.com

**Galen Graham**  
13820 Wolf Road  
Felton, PA 17322  
(717) 968-3643  
niklvalley@aol.com

**Laurie Meyers**  
470 Million Dollar Road  
Halifax, PA 17032  
(717) 350-2516  
Laurie@pvsimm.com

**William Shoemaker**  
3839 Milligans Cove Rd  
Manns Choice, PA 15550  
(814) 624-0667  
shoesim@yahoo.com

**William T. Vossler**  
665 Knoxlyn Road  
Gettysburg, PA 17325  
(717) 337-1615  
tvossler@comcast.net

**Les Whitmoyer**  
1045 Pine Grove Road  
Fredericksburg, PA 17026  
(717) 865-2245  
lwhitmoyer@hotmail.com

**Emmett Fox (Jr Rep)**  
169 Dellville Road  
Duncannon, PA 17020  
717-329-9101  
Efox717@gmail.com

**Levi and Grace Graham (Jr Reps)**  
13820 Wolf Road  
Felton, PA 17322  
(717) 968-3643

#### Term Expiring 2014

Bradley Feight  
Laurie Meyers  
William T. Vossler

#### Term Expiring 2015

Annie Duncan  
Ron Dziembowski  
Galen Graham

#### Term Expiring 2016

David Downs  
Jeff Feight  
William Shoemaker  
Les Whitmoyer



## Upcoming Events



### Pennsylvania Beef Expo/Bull Test

**March 27-28, 2014**  
Simmental Female Sale  
Performance-Tested Bull Sale  
State College, PA  
**March 29, 2014**  
Junior Show  
Harrisburg, PA

### AJSA Eastern Regional Classic

*June 19-21, 2014*  
Winston Salem, NC

### AJSA National Classic

*July 13-20, 2014*  
Louisville, KY

### Simmental Breeder's Sweepstakes

*July 17-20, 2014*  
Louisville, KY

### Ag Progress Days

*August 12-14, 2014*  
*Please visit our booth!!*  
Rock Springs, PA

### Keystone International Livestock Exposition

*September 27-October 5, 2014*  
Harrisburg, PA  
Open Show, Junior Show,  
Junior Steers

### Delaware Livestock Exposition

*October 11-12, 2014*  
Delaware State Fair Grounds  
Harrington, DE

### Pennsylvania Fall Classic Sale

**Friday, October 24, 2014**  
Preview of Sale Cattle  
**Saturday, October 25, 2014**  
Simmental Sale

### American Royal Stock Show

*October 20-November 2, 2014*  
Kansas City, MO

### North American International Livestock Exposition

*November 8-21, 2014*  
Louisville, KY

### National Western Show and Sale

*January 10-25, 2015*  
2015 The One Simmental Sale  
ASA Annual Meeting  
Denver, CO

### 2015 Pennsylvania State Farm Show

*January 10-17, 2015*  
Harrisburg, PA



## **Simmental ...**

### **Today's Simmental on Cutting Edge**

**From the American Simmental Association**

**Bozeman, Montana**

In 1968, a group of maverick cattlemen met to form the American Simmental Association. They weren't mavericks because they wanted to produce Simmental genetics, they were different because they decided to use performance records and other technologies as everyday tools for cattle and beef improvement.

As a result of their focus on performance, the first beef breed sire summary was published in 1971. This initial summary contained information on a grand total of 11 Simmental bulls! Today, millions of records are analyzed for each Simmental Sire Summary and almost 100,000 sires have records in the database.

European Simmental breeders had incorporated performance traits unique to most world cattle genetics. Few breeds could offer the combination of early puberty, growth rate, muscularity, milk production and gentle disposition found in the Simmental imports of the 1970s. When combined with America's existing Brahman and British-influenced commercial cows, farmers and ranchers had finally discovered a crossbreeding combination that optimized feeder cattle production, and offered the opportunity for great crossbred replacement heifers.

Simmental were so popular by the early 1980s, many commercial herds had become high percentage Simmental. These cattle had similar characteristics to European Simmental and thrived in high nutrition environments; however, in several areas of the U.S., it was becoming apparent that Simmental genetics needed more calving ease, less frame size and more carcass quality.

The members of the American Simmental Association responded to the call for improving these traits. Since 1984, ASA's database genetic trend proves today's Simmental sires offer greatly improved calving ease. There are numerous bulls listed in the ASA Sire Summary with high accuracy progeny proofs for exceptional direct and maternal calving ease. Now, by selecting for high calving ease EPDs, many commercial herds can safely use Simmental bulls on their heifers and cows.

Using a planned crossbreeding system, Simmental cross females are valuable replacements. Besides being among the easiest calving heifers in the business, Simmental frame scores have been dramatically decreased. The most popular Simmental bulls in the U.S. averaged frame score 6.4 in 2002 compared to a 9 in 1986. In addition, these current bulls are all solid colored and polled.

## **Simmental ...**

### **Today's Simmental on Cutting Edge (continued)**

**From the American Simmental Association**

**Bozeman, Montana**

The biggest change in beef production in the 1990s was the intense emphasis on carcass value. Branded beef programs featured products with much better value consistency. Both leanness and meat quality are and will continue to be critical factors of carcass value. The American Simmental Association is the most aggressive continental breed association in performance testing sires for carcass value.

Every bull in the ASA 2005 Sire Summary has carcass EPDs. Each year the ASA tests over 100 young sires for carcass value. In 1999, more than 2,000 carcasses from this program produced these averages: carcass wt. 782, fat thickness 0.41, REA 13.0, USDA Choice 69%, and less than 1% USDA Standard, dark cutters or heavy weight discounts. The ASA also lists the only Tenderness EPDs in the beef industry for most of the popular sires.

The breeders of the American and Pennsylvania Simmental Associations have taken a great breed and made it better. Where else can you find early puberty, great growth, continental breed muscle and easy dispositions tied to a database that identifies calving ease, moderated frame and the best marbling genetics among high growth cattle? Visit our website [www.simmental.org](http://www.simmental.org) or write for a free sire summary:

### **AMERICAN Simmental ASSOCIATION**

**1 Simmental Way  
Bozeman, Montana 59718**

**Telephone: (406) 587-4531**

**Fax: (406) 587-9301**

**E-mail: [simmental@simmgene.com](mailto:simmental@simmgene.com)**

**Website: [www.simmental.org](http://www.simmental.org)**





**JANUARY 31, 2015**

**Pano's Restaurant at 6:30PM**

*Harrisonburg, Virginia*

**Selling Elite Breds, Opens, Bulls & Genetic Packages**

**Online Bidding Available at [www.Cowbuyer.com](http://www.Cowbuyer.com)**

*Sale is held in conjunction with VCCP Winter Classic Jackpot Show. Cattle will be on Display Friday and Saturday at the Rockingham County Fairgrounds, there will be a video sale at Pano's Ball Room just down the road. Come Join us in this First Class Event.*

**Quality Consignments are welcome.**

*Contact a Sale Committee Member for more information.*

**Neal Buchanan**  
540-292-1317

**Clint Lyle**  
540-292-5953

**J.T. Begoon**  
540-430-1716



*Quality Simmental Lots sold in last year's sale for respectable premiums. Thank you for your consignments Powell's Valley Simmental and G&B Cattle.*

**WWW.VIRGINIACLUBCALFPRODUCERS.COM**

## **Pennsylvania Simmental Association Membership Listing**

**Arndt, Michael and Rhonda**  
**Ste-Wan Farms**  
441 Hillside Drive, Middleburg, PA 17842  
Snyder County  
E-mail: [farmchic3@hotmail.com](mailto:farmchic3@hotmail.com)

**Cell: (570) 847-9844**

**Baskin, Harvey E. and Dena**  
**Wanna-B-Rich Farm**  
Cow / Calf Producer – Show Prospects  
131 Hagstrom Road, Woodstock, CT 06281  
Windham County  
E-mail: [harv\\_bask@att.net](mailto:harv_bask@att.net)  
*14 miles south of Massachusetts Turnpike.*

**(860) 923-9277**

**Fax: (860) 923-9277**

**Cell: (860) 450-6841**

**Bayler, John and Rita**  
**Double "B" Venture**  
P.O. Box 74, Jonestown, PA 17038  
Lebanon County

**(717) 865-4420**

**Benner, Fred, Kim, Ellie, and Emily**  
**Serenity Hills Farm**  
429 Happy Hollow Road, Mifflintown, PA 17059  
Juniata County  
E-mail: [fbenner@embarqmail.com](mailto:fbenner@embarqmail.com)  
*From US 322, PA 35 North at Mifflintown Exit, 1.5 miles.*

**Fred: (717) 320-2303**

**Kim: (717) 994-2540**

**Bertrand, Gary, Cindy, Stephanie, and John**  
**Hillcrest Farm**  
148 Millbury Street, Auburn, MA, 01501  
Worcester County  
E-mail: [cindybertrand@charter.net](mailto:cindybertrand@charter.net)

**(508) 832-8313**

**Cindy's Cell: (774) 272-1235**

**Bishop, Kevin W.**  
29 Pine Tavern Road, Elmer, NJ 08318  
Salem County

**(856) 358-3923**

**Bosley, Jim and Betty**  
**Buena Vista Simmentals**  
P.O. Box 5, Old Fields, WV 26845  
Hardy County  
E-mail: [bvsimmentals@hardynet.com](mailto:bvsimmentals@hardynet.com)

**(304) 530-6636**

**Cell: (304) 257-3093**

*4 miles north of Moorefield on Rt. 220, turn left on to Fish Pond Road. Physical address is 296 Fish Pond Road.*



**Bradfield, Michael** (717) 328-4177  
**Brad-Fields Farm**  
 12850 Shimpstown Road, Mercersburg, PA 17236  
 Franklin County  
 E-mail: [bradfield.michael@gmail.com](mailto:bradfield.michael@gmail.com)

**Broughton, Jonah and Abbey** (585) 356-0906  
**Sunrise Farms**  
 2939 Glor Road, Attica, NY 14011  
 Wyoming County  
 E-mail: [sunrisefarmsny@yahoo.com](mailto:sunrisefarmsny@yahoo.com)

**Brown, Chris and Kellee, Mollee, Tyler, and Carter** (304) 366-5353  
**Classic Farms**  
 430 Levels Road, Fairmont WV 26554  
 Marion County  
 E-mail: [classicsim@aol.com](mailto:classicsim@aol.com)  
*Located off I-79 exit 132 (5 miles).*


**Brown, Les and Bernie** (814) 967-3503  
**Old Foundation Farm**  
 14718 Strawbridge Road, Townville, PA 16360  
 Crawford County  
 E-mail: [laloba2@windstream.net](mailto:laloba2@windstream.net)

**Bullis, Larry and Judy** (717) 334-6323  
**Belmont Steaks Farm** Cell: (717) 515-4843  
 202 Belmont Road, Gettysburg, PA 17325-8442  
 Adams County  
 E-mail: [lnjbullis@comcast.net](mailto:lnjbullis@comcast.net)  
*From Gettysburg, approximately 3 miles west on Rt. 30, turn right on to Belmont Road, farm is 1/2 mile on left.*


**Bussard, Gary and Paulette** (814) 257-8570  
 163 Pasture Road, Dayton, PA 16222  
 Armstrong County

**Campbell, James and Jackie** (724) 852-1622  
**Campbell Show Calves** Cell: (724) 263-0955  
 928 W.W. Railroad Road, Sycamore, PA 15364  
 Greene County  
 E-mail: [cscfarm@yahoo.com](mailto:cscfarm@yahoo.com)

**Carlisle, David and Barbara** (724) 587-0243  
**Carlisle Farm**  
 22 Mavor Lane, Avella, PA 15312  
 Washington County



**Registered Simmentals**



**DOUBLE RD  
FARM  
AND LIVESTOCK**

10 Town Farm Road, Dudley, MA 01571

Ron & Rhonda Phone: 508-943-6508  
 Dziembowski Cell: 508-868-8836



Ken & Mary Gumaer  
 716-735-7904  
 Cell: 716-830-8149

Black, Red & Traditional • AI Sired Since 1980

**Simmental**

*Home of LBF Simmentals purebred  
performance cattle with show appeal.*

See our bulls/heifers in the 2014 PA Bull Test Sale and Spring Female Sale March 28<sup>th</sup>, 2014. Also check out our cattle at the Stars & Stripes Sale in Gettysburg, PA, May 3<sup>rd</sup>, 2014, and PA Fall Classic in Waynesburg, PA, October 25<sup>th</sup>, 2014.

9335 Pearson Rd., Middleport, NY 14105

[marygumaer@aol.com](mailto:marygumaer@aol.com)

**Do YOU Have a Durable, Efficient Way to Do Your...**

- ✓ Vaccinations
- ✓ Pregnancy Checks
- ✓ Artificial Insemination

- ✓ Embryo Transfers
- ✓ Deworming
- ✓ Ear Tagging



Pearson - Designed by Cattlemen for Cattlemen

★Chutes

★Tubs

★Alleys

★Headgates

**Allegheny Meadows**  
**Joe & Doretta Speicher**  
**Manns Choice, PA**  
**Cell: 814-285-1541**

For a complete catalog go to...

**814-733-2775**

-

**[www.alleghenymeadows.net](http://www.alleghenymeadows.net)**



**Casilio, Albert "Butch" and Denise** (814) 965-5079  
**Elk County Simmentals** Butch's Cell: (814) 335-4417  
 1316 Water Street Ext., Johnsonburg, PA 15845 Denise's Cell: (814) 335-2434  
 Elk County  
*Six miles north of Ridgway on Route 948, bear right. Go to bottom of hill. Take right turn before bridge on Water Street Extension. Go 1-1/2 miles. Farm on left.*

**Chambers, Donald E. Jr.** (814) 952-3670  
**Chambers Simmentals**  
 10687 Route 536, Punxsutawney, PA 15767  
 Jefferson County  
*Call for directions.*

**Claus, Richard E.** (860) 429-9500  
**Fenton River Farm**  
 81 Daleville Road, Willington, CT 06279  
 Tolland County

**Clepper, Paul E.** (717) 960-0182  
**Norwin Simmental**  
 180 Willow Grove Road, Carlisle, PA 17013  
 Cumberland County  
 E-mail: [ypclep@hotmail.com](mailto:ypclep@hotmail.com)

**Cowell, Jim and Billie** (724) 627-8271  
**Frosty Springs Farm** Jim's Cell: (724) 986-8502  
 1214 Garards Fort Road, Waynesburg, PA 15370  
 Greene County  
 E-mail: [frostyspringsfarm@wildblue.net](mailto:frostyspringsfarm@wildblue.net)  
 Website: [www.frostyspringsfarm.com](http://www.frostyspringsfarm.com)  
*I-79 South, Kirby Exit, go left at stop sign 2 miles, at stop sign, turn left. Go another 2 miles.*

**Crum, Bob and Jenny** Bob: (740) 213-7727  
**Crum's Circle C** Jenny: (814) 571-3243  
 36951 CR 2E, Woodsfield, OH 43793  
 Monroe County  
 E-mail: [crumscirclec@gmail.com](mailto:crumscirclec@gmail.com)  
 Website: [crumscirclec.com](http://crumscirclec.com)  
*From I70, south on OH800 to Malaga (flashing light), right on OH145 for 3 miles to Miltonsburg, take first right after town—County Rd 2E for 1 mile.*

**Daum, Fred and Suzie** (814) 354-2280  
**Hillside Acres**  
 21969 Route 208, Tionesta, PA 16353  
 Clarion County  
 E-mail: [hillside@venustel.com](mailto:hillside@venustel.com)

## Indiana County, PA

Home of one of the top  
 Simmental Breeders  
 And Club Calf  
 Producers.

### Woodview Simmental Farm

*Frank and Susan Glass*

1801 Grange Road  
 Blairsville, PA 15717  
 (724) 599-4612

E-mail: [sunnysue831@gmail.com](mailto:sunnysue831@gmail.com)

**Stony Creek Simmentals**  
 Gene & Elvira McMichael



Purebred Simmentals

Show Heifers & Bulls

Top AI Bulls Used

Our performance cattle  
 give us great cows and  
 predictable EPD's.

**3835 Milligans Cove Rd**  
**Manns Choice, PA 15550**  
**(814) 623-7974**

E-mail: [matadorjet@embarqmail.com](mailto:matadorjet@embarqmail.com)

## Elk County Simmentals Elk County Simmentals

# ELK COUNTY SIMMENTALS



**Butch Casilio**  
 814-335-4417

**Denise Casilio**  
 814-335-2434

## Fullblood Fleckvieh

<http://elkcountysimmentals.wix.com/fullbloods>

**1316 Water Street Ext.**  
**Johnsonburg, Pa.**  
**814-965-2606**

**Dell, William and Betty Lou**  
**Tri-J Farm**  
 170 Mathias Road, Littlestown, PA 17340  
 Adams County  
*Take Route 97 two miles south of Littlestown, PA. Turn left on Mathias Road just before Mason-Dixon Line. First farm on left.*

(717) 359-8283  
 Cell: (410) 977-5077

**Downs, David, Annette, Sara, and Cody**  
 194 Stock Farm Road, Jackson Center, PA 16133  
 Mercer County  
 E-mail: [annettedowns@ymail.com](mailto:annettedowns@ymail.com)

(724) 376-7195

**Druck, Philip L. and Carol**  
 1099 Grimes Hill Road, Sabinsville, PA 16943  
 Tioga County  
 E-mail: [phildruck@yahoo.com](mailto:phildruck@yahoo.com)  
*North of Gaines on Rt. 349; from Rt. 6 approximately 6 miles to left on Grimes Hill Road.*

(814) 628-4422

**Duncan, Annie**  
**Powell's Valley Simmentals**  
 470 Million Dollar Road, Halifax, PA 17032  
 Dauphin County  
 E-mail: [simmtalker@yahoo.com](mailto:simmtalker@yahoo.com)  
 Website: [www.pvsimm.com](http://www.pvsimm.com)

(717) 350-2515

**Dziembowski, Ron and Rhonda**  
**Double RD Farm**  
 10 Town Farm Road, Dudley, MA 01571  
 Worcester County  
 Email: [RLUVSANGUS@aol.com](mailto:RLUVSANGUS@aol.com)

(508) 868-8836

**Feight, Bradley**  
**Feight's Farm**  
 480 E. Graceville Road, Breezewood, PA 15533  
 Bedford County  
 E-mail: [feibra60@pct.edu](mailto:feibra60@pct.edu)

(814) 502-8973

**Feight, Jeff and Sherry**  
**Feight's Farm**  
 480 E. Graceville Road, Breezewood, PA 15533  
 Bedford County  
 Sherry's E-mail: [JNSSimmentals@yahoo.com](mailto:JNSSimmentals@yahoo.com)

(814) 735-3797

**Fry, David, Linda, Jonathan, Jennifer, and Katie**  
**Fry's Beef Farm**  
 20389 Route 35 South, Mifflin, PA 17058  
 Juniata County



(717) 436-9708



**WWW.AGRITRACTION.COM**  
**1-877-966-3546**  
**Traction Milling, Safety & Profitability Since 1997**


*"Choose a job you love, and you will never have to work a day in your life."*

Confucius

**NikLenValley Farm**  
 Red & Black Simmentals

Thank You to all that supported Levi & Grace during the 2013 Show Season.



**Galen, Nichole, Levi & Grace Graham**  
 13820 Wolf Road  
 Felton, PA 17322  
 Galen (717) 968-3643  
 Nichole (717) 968-6635



**Gill, Bradley and April**  
 64 Star View Lane, Newport, PA 17074  
 Perry County  
 E-mail: [jackpot@southeastclassic.com](mailto:jackpot@southeastclassic.com)  
 E-mail: [br.gill@hotmail.com](mailto:br.gill@hotmail.com)  
 Website: [www.showringmanager.com](http://www.showringmanager.com)  
*Perry County two miles west of Millerstown.*

(717) 275-3579

**Glass, Frank and Susan**  
**Woodview Simmental Farm**  
 1801 Grange Road, Blairsville, PA 15717  
 Indiana County  
 E-mail: [sunnysue831@gmail.com](mailto:sunnysue831@gmail.com)  
*From Rt. 22 at Blairsville Exit take Rt. 217 North about 3 miles to Grange Road. Take left on Grange Road and go about 1 1/2 miles to farm.*

(724) 599-4612

**Goss, Tim**  
**Goss Family Farm**  
 90 Decatur Road, McClure, PA 17841  
 Mifflin County  
 E-mail: [gossfamilyfarm@gmail.com](mailto:gossfamilyfarm@gmail.com)

(717) 543-6128

**Graham, Galen and Nichole**  
**NikLen Valley Farm**  
 13820 Wolf Road, Felton, PA 17322  
 York County  
 E-mail: [niklenvalley@aol.com](mailto:niklenvalley@aol.com)

**Galen's Cell: (717) 968-3643**  
**Nichole's Cell: (717) 968-6635**

**Gromlich, Bruce**  
**SASA Farms**  
 121 Schappell Road, Hamburg, PA 19526  
 Berks County  
 E-mail: [sasafarms@copper.net](mailto:sasafarms@copper.net)  
*78-61 South, go 2 miles, turn left on Schappell Road, 2 1/2 miles, farm on right.*

(610) 562-5737

**Gumaer, Ken and Mary**  
**Ladybug Farm**  
 9335 Pearson Road, Middleport, NY 14105  
 Niagara County  
 E-mail: [marygumaer@aol.com](mailto:marygumaer@aol.com)  
*From Rt. 31 North on Carmen Road, 1 1/2 miles left on Pearson Road; 1 mile on north side after Drum Road.*

**(716) 735-7904**  
**Cell: (716) 830-8149**

**Harris, John and Vickie**  
**Harris Farms**  
 1603 Bucket Line Road, Osceola Mills, PA 16666  
 Clearfield County  
 E-mail: [obx.wmn@gmail.com](mailto:obx.wmn@gmail.com)  
*From red light in Osceola Mills, to up hill, follow road 1.2 miles, first farm on left.*

(814) 339-7752



This is an In Dew Time daughter that was Champion heifer at PA Simmental Assoc Summer Field Day, 2012, with Emily.

## SERENITY HILLS FARM

**Breeders of the Top Indexing  
 Simmental Bulls at the PA Bull Test  
2007 and 2011**

**We have a couple of bulls for sale this summer.**

Stop by to visit us at the farm, we usually have heifers and bulls for sale

Fred, Kim, and Emily Benner  
[fbenner@embarqmail.com](mailto:fbenner@embarqmail.com)

717-320-2303

429 Happy Hollow Road  
 Mifflintown, PA



This was a Dream On calf owned by Katie McLaughlin, she won Calf Division Reserve Champion in Junior Show at Farm Show 2013.

**Herr, Jack** (717) 507-8342  
**JEH Simmentals** Fax: (717) 273-3751  
P.O. Box 101, 105 Maple Drive, Fredericksburg, PA 17026  
Lebanon County  
E-mail: [jehsimm@aol.com](mailto:jehsimm@aol.com)

**Hook, Steve and Wanda** (570) 837-7020  
**Ste-Wan Farms**  
4751 New Berlin Highway, Middleburg, PA 17842  
Snyder County  
E-mail: [stewanfarms@verizon.net](mailto:stewanfarms@verizon.net)

**Hoover, Ray E. and Donna** (717) 266-2649  
**Codorus Furnace Farm**  
645 Codorus Furnace Road, Mount Wolf, PA 17347  
York County

**Kelley, John A. and Tricia** (814) 733-4705  
**Kelley Farms**  
1875 Glade Pike, Manns Choice, PA 15550  
Bedford County  
*30 West from Bedford to 31. Follow 31 west at flashing light in Manns Choice to Glade Pike Road. Go about 6 miles. First farm past the white church.*

**Lay, William and Kathleen** (410) 679-0882  
**Folly Farm** Cell: (443) 307-7550  
2210 Old Joppa Road, Joppa, MD 21085  
Harford County  
E-mail: [laykb@aol.com](mailto:laykb@aol.com)

**Lenzner, John E. and Geraldine** (412) 741-2672  
**Lenzner Farms** Cell: (412) 780-0701  
619 Duff Road, Sewickley, PA 15143  
Allegheny County  
E-mail: [johnlenzner@aol.com](mailto:johnlenzner@aol.com)  
*79 North, Mt. Nebo Exit (3 miles from interstate) Duff Road.*

**Limbert, Adam and Sarah** (570) 617-7620  
**Limbert Livestock Co.**  
119 Parallel Road, Pine Grove, PA 17963  
Schuylkill County  
E-mail: [sarah13mae@hotmail.com](mailto:sarah13mae@hotmail.com)

**Loht, Ken, Tina, Noah, Kaleb, and Kezia** (717) 543-6185  
**KNT Beef Farm**  
250 Road Apple Drive, McClure, PA 17841  
Mifflin County  
E-mail: [kntbeef@verizon.net](mailto:kntbeef@verizon.net)

# Advertising with the Pennsylvania Simmental Association

**We are working hard to provide more  
ways to market your cattle and business!!**

## Advertising Opportunities

Advertising in the Pennsylvania Simmental Association's annual Membership Directory, Newsletter, or on our website is an excellent way of marketing your farm or business directly to potential customers.

### Membership Directories

Printed PSA Directories are distributed at most major livestock events, Simmental shows and sales in Pennsylvania and surrounding states, and the digital version is available at all times on our website.

### Newsletters

Newsletters are mailed to a growing group of cattlemen, with the digital version being sent to an even larger list, as well as being posted on the PSA and PJSA websites. PSA/PJSA members receive FREE text classifieds in the PSA Newsletter, and low cost advertising opportunities are available for members and non-members alike!

### PaSimmental.com

With more people embracing technology everyday, the internet is an effective and economical way of placing your farm or business in front of many viewers with little investment. We offer FREE cattle classified ads, including photographs and videos, to PSA/PJSA members, and attractively priced banner ads for all types of business (please inquire for pricing information).

**Please allow us to work for you!**

*For more information about advertising  
in the Pennsylvania Simmental Association  
Membership Directory, please contact:*

**Les Whitmoyer**  
Phone: 717-865-2245

*For more information about advertising  
in the Pennsylvania Simmental Association  
Newsletter or website, please contact:*

**Annie Duncan**  
Phone: 717-350-2515  
Email: [annie@annieduncan.com](mailto:annie@annieduncan.com)



**Lucariello, Steve and Barb**  
**Back Road Ranch**  
8105 Nettle Hill Road, Sherman, NY 14781  
Chautauqua County  
E-mail: [backroadranch@fairpoint.net](mailto:backroadranch@fairpoint.net)

(716) 761-3509

**Mankey, Valerie, Justin and Duane Snee**  
**SVJ Cattle Company/D&D Cattle Company**  
465 Ringland Road, Amity, PA 15311  
Washington County  
E-mail: [valeriemankey@earthlink.net](mailto:valeriemankey@earthlink.net)  
Website: [www.svjfarm.com](http://www.svjfarm.com)

(724) 554-0446  
Cell: (724) 747-3511

**McClure, C. Arnold and Linda**  
**McClure Mills Farms**  
16381 Pump Station Road, Shirleysburg, PA 17260-9735  
Huntingdon County  
E-mail: [arnoldmcclure@gmail.com](mailto:arnoldmcclure@gmail.com)  
*1 mile north of Shirleysburg on Pump Station Road.*

(814) 542-4748  
Cell: (814) 591-2125

**McMichael, Gene and Elvira**  
**Stony Creek Simmentals**  
3835 Milligans Cove Road, Manns Choice, PA 15550  
Bedford County  
E-mail: [matadorjet@embarqmail.com](mailto:matadorjet@embarqmail.com)

(814) 623-7974  
Cell: (814) 310-1464  
Fax: (814) 623-7061

*From the PA Turnpike (East), take the Bedford Exit. Then go 30 West to 31 West. It will turn into SR 96. Continue south and turn left at White Sulphur Springs Road. Farm is 2 miles on right. From the PA Turnpike (West), take the Somerset Exit. Then to 31 East to Bard. Turn right at Bard and then left at SR 96. Turn right at White Sulphur Springs Road. Farm is 2 miles on the right.*

**Messick, Joe, Sally, and Mylin**  
**Messick Farms**  
2835 Schoolhouse Road, Middletown, PA 17057  
Dauphin County  
E-mail: [messick85@comcast.net](mailto:messick85@comcast.net)

(717) 944-3500  
Office: (717) 985-1021

*PA Turnpike, Exit 247 to Rt. 283E. 1 mile to 441/Airport Exit. Rt. 441 N to first farm.*

**Metzker, Wesley, Hunter, and Keller**  
**2nd Chances Cattle Co.**  
5334 Clover Creek Road, Williamsburg, PA 16693  
Blair County  
E-mail: [wesmetzker@yahoo.com](mailto:wesmetzker@yahoo.com)

(814) 832-2342

# Calving ease. Carcass. Cows.

## It starts with a live calf

### Calving Ease

That's where Select Sires starts - with high-quality semen from the best genetics with a strong emphasis on calving-ease and low birth weight. We're proud that we are the leader in heifer AI and are home to some of the greatest calving-ease sires in history. We want your calving season to be one that you'll remember with a smile on your face.



### Carcass

In the beef business today, selling for more value is vital. Select Sires leads the AI industry with bulls that are leaders for end-product value. We back up these bulls with ample data - we want you, our customer, to know that our bulls deliver as promised. With the longest-running young sire sampling program in the business, our goal is to generate progeny data early in a bull's life - so that you have more confidence in not only the bull, but in our program.



### Cows

The cow has to do four things well-she needs to calve, milk, raise a calf and breed back. She needs to be able to do these things over a period of years and she needs to be one that you like - she is the one you live with. Longevity, structure, capacity, udder quality, disposition - all qualities that you want in your cows - and you want them to look good while doing their job. Select Sires is dedicated to providing genetics on the best cowmaker bulls in the industry - bulls whose daughters make them famous.



## Calving ease. Carcass. Cows.

Steve Furrow - Beef Specialist 540-520-4804  
Rocky Mount, VA • phone: 800-423-7473  
email: [office@selectsirepower.com](mailto:office@selectsirepower.com)  
[www.selectsirepower.com](http://www.selectsirepower.com)



**Meyer, Shane**  
6034 Gibsonville Road, Leicester, NY 14481  
Livingston County  
E-mail: [Patnoelfarm@gmail.com](mailto:Patnoelfarm@gmail.com)

(585) 314-2146

**Meyers, Laurie**  
**Powell's Valley Simmentals**  
470 Million Dollar Road, Halifax, PA 17032  
Dauphin County  
E-mail: [Laurie@pvsimm.com](mailto:Laurie@pvsimm.com)  
Website: [www.pvsimm.com](http://www.pvsimm.com)

(717) 350-2516

*From Harrisburg, Rt. 322 West, exit on Rt. 147 North. Rt. 147 North for 4 miles. Turn right on Million Dollar Road. First farm on right.*

**Miller, William and Kathleen**  
1308 Garands Fort Road, Waynesburg, PA 15370  
Greene County  
E-mail: [billkathymiller@yahoo.com](mailto:billkathymiller@yahoo.com)

(724) 627-7129

**Monroe, Tom and Cheryl**  
**Highfields Farm**  
11500 Meeting House Road, Myersville, MD 21773  
Frederick County  
E-mail: [t3monroe@xecu.net](mailto:t3monroe@xecu.net)

(301) 293-3274

**Mytar, Chris and Alissa**  
**CAM Cattle Co.**  
111 Palomino Place, Charles Town, WV 25414  
Jefferson County  
E-mail: [amc6121@hotmail.com](mailto:amc6121@hotmail.com)  
Website: [www.frostyspringsfarm.com](http://www.frostyspringsfarm.com)

(217) 741-8892

**Nice, Brent**  
38 Pleasant View Road, Halifax, PA 17032  
Dauphin County  
E-mail: [bfn5005@psu.edu](mailto:bfn5005@psu.edu)

(717) 919-8449

**Nogan, Ann**  
**Pennsylvania Center for Beef Excellence, Inc.**  
2301 N Cameron Street, Room 303, Harrisburg, PA 17110  
Dauphin County  
Email: [anogancbe@gmail.com](mailto:anogancbe@gmail.com)  
Website: [www.beefexcellence.com](http://www.beefexcellence.com)

(717) 705-1689



Les Whitmoyer

*A special "thank you" to Les Whitmoyer, who has been an integral part of every Pennsylvania Simmental Association membership directory for many years. We appreciate his countless hours spent working on the phone and computer!*

Pennsylvania Simmental Association



- Custom Fitting for Show & Sale
- Herd Consultation
- Semen Sales
- Sale Advisor & Consultation
- Private Treaty Sales

## CLIFF & LYNN ORLEY

1486 Mt. Wilson Rd.  
Lebanon, PA 17042  
(717) 964-2243

(717) 964-1862 Fax

(717) 269-0128 Cell

[corley01@comcast.net](mailto:corley01@comcast.net)

[www.keystonecattleservices.com](http://www.keystonecattleservices.com)

## PENNSYLVANIA SIMMENTAL ASSOCIATION

### 2015 Membership Directory Advertising

Advertising in the Pennsylvania Simmental Association's annual Membership Directory is a great way of marketing your farm or business directly to potential customers. PSA Directories are distributed at most major livestock events, Simmental shows and sales in Pennsylvania and surrounding states!!!

### Advertisement Sizes and Rates

*Ad deadline is January 31, 2015.*

*Must receive print-ready files by the deadline.*

*Now offering full bleed and color advertisements!*

Ad Sizes	Ad Rates
	Black and White
Full Page*..... 5.5"W x 8.5"H	Full Page (Full Bleed)..... \$ 75.00
Half Page..... 4.5"W x 3.75"H	Half Page..... \$ 50.00
Quarter Page Horizontal..... 4.5"W x 1.87"H	Quarter Page..... \$ 35.00
Quarter Page Vertical..... 1.87"W x 3.75"H	Color
*Allow ¼" extra for full bleed ads, and keep important content ¼" inside the cut line.	Full Page (Full Bleed)..... \$ 150.00
	Half Page..... \$ 100.00
	Quarter Page..... \$ 70.00

*If you are interested in advertising in the 2015 PSA Directory, please contact Les Whitmoyer.*

Les Whitmoyer

Phone: 717-865-2245



**Orley, Cliff and Lynn**  
**CLO Simmentals**  
 1486 Mt. Wilson Road, Lebanon, PA 17042  
 Lebanon County  
 E-mail: [corley01@comcast.net](mailto:corley01@comcast.net)  
 Website: [www.keystonecattleservices.com](http://www.keystonecattleservices.com)  
*South of Hershey on Rt. 117 to Colebrook, PA. East 1/3 mile on Mine Road, farm on right.*

**Palmer, William** (814) 282-1493  
**Palmer Cattle Co.**  
 4563 Turkey Track Road, Linesville, PA 16424  
 Crawford County

**Paulus, Millard F. IV** (856) 358-3980  
**Paulus Farms**  
 581 Olivet Road, Pittsgrove, NJ 08318  
 Salem County  
 E-mail: [paulusfarms@verizon.net](mailto:paulusfarms@verizon.net)

**Poliskiewicz, Phil** (570) 897-5390  
 1706 Totts Gap Road, Bangor, PA 18013  
 Northampton County

**Porter, Ralph and Cindy** (607) 565-2452  
**Porter's Simmental Lake Ranch** Cell: (607) 565-7283  
 81 Porters Simmental Lane, Waverly, NY 14892  
 Tioga County  
 E-mail: [portersimm@clarityconnect.com](mailto:portersimm@clarityconnect.com)  
 Web site: [www.portersconcrete.com](http://www.portersconcrete.com)  
*Three miles east of Waverly off of Route 17C.*

**Regula, Edward J. and Toni Gail** (724) 439-4179  
**Cher-O-Kee Cattle Co.** Cell: (724) 322-1813  
**Home of Denver Champion Lazy H Burn Right T26**  
 P.O. Box 125, Brownfield, PA 15416  
 Fayette County  
 E-mail: [rag857@atlanticbb.net](mailto:rag857@atlanticbb.net)  
*One mile off of Route 40 (Uniontown) on Hopwood Fairchange Road.*

**Roberts, Bob** (740) 435-0297  
**Double R Simmentals**  
 5498 Skyline Drive, Cambridge, OH 43725  
 Guernsey County  
 E-mail: [broberts103@roadrunner.net](mailto:broberts103@roadrunner.net)

# STRONGHOLD

CATTLE  
HANDLING  
EQUIPMENT

## The Brand That's Built to Handle Yours

### StrongHold Cattlemaster 640:

- Heavy-duty manual headgate
- Humping bar
- Side exit on both sides
- Ratchet bar side squeeze
- Flex cutting gate
- Palpation cage
- Restraining pipe
- Diamond plate floor
- Available with digital scale
- Optional wheel assembly for portability



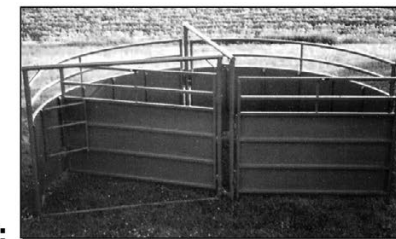
### StrongHold Heavy-Duty Alley Way:

- Easy glide Nylatron movement
- Interchangeable brackets maximize positioning
- Infinite and secure adjustment
- Ground clearance of moving parts is six inches
- Pre-punched for Alley Can't Back
- Alley adjusts from less than 15 inches to 28+ inches



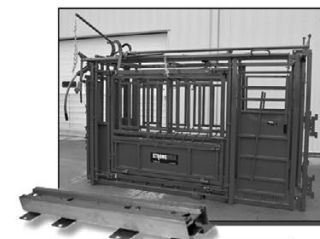
### StrongHold Heavy-Duty Alley Way:

- Eight-foot sweeping radius
- Spring-loaded crowding gate latch
- 14 gate locking points
- Heavy-duty towing hitch
- Folds in half to six feet wide



### All StrongHold Chutes are Scale-Ready:

- Digital read out
- Reliable and accurate (1% error or less)
- Low profile
- AC/DC or battery powered
- Weather resistant
- Urethane outer jackets on cable connections
- \*Cattlemaster 440 requires weldment option



Your local StrongHold contact:

## EASTERN STATES LIVESTOCK SYSTEMS

1563 Oak Grove Road  
 Breezewood, PA 15533  
 814.977.0848



**Frank "Butch" Otto**  
**1-800-242-3240**

**Rockefeller, David and Miranda Kaiser** (914) 631-1154  
**Hudson Pines Farm**  
 180 Bedford Road, Pocantico Hills, Sleepy Hollow, NY 10591  
 Westchester County  
 E-mail: [barn180@aol.com](mailto:barn180@aol.com)  
 Website: [www.hudsonpinesfarm.com](http://www.hudsonpinesfarm.com)

**Rohm, Randy and Heather** (724) 484-0316  
**Smoky Valley Farm**  
 1135 West Finley Road, West Finley, PA 15377  
 Washington County  
 E-mail: [smvcattle@gmail.com](mailto:smvcattle@gmail.com)  
*170 West to Exit 1 (West Alexander). Turn left off exit onto Old Brick Road, go 4.8 miles and make sharp left onto Beham Ridge Road. Make first right onto West Finley Road. Farm is 1.6 miles on the right.*

**Ruggles, Ron, Amy, and Molly** (740) 972-1030  
**Homestead Acres**  
 2103 County Road 159, Ashley, OH 43003  
 Morrow County

**Runk, Randy** (814) 542-2154  
**E&R Farms LP** Cell: (814) 599-3377  
 17299 Hill Valley Road, Shirleysburg, PA 17260  
 Huntingdon County  
 E-mail: [randy.runk@gmail.com](mailto:randy.runk@gmail.com)

**Runkle, Sally Messick** (717) 944-1707  
**Messick Farms**  
 180 Newberry Road, Middletown, PA 17057  
 Dauphin County  
 E-mail: [srunkle180@yahoo.com](mailto:srunkle180@yahoo.com)

**Schadel, Neal and Darlane** (570) 682-8562  
 144 Coleman Road, Hegins, PA 17938  
 Schuylkill County  
 E-mail: [chickencoop144@gmail.com](mailto:chickencoop144@gmail.com)  
*Rt. 25; 8 miles west of Hegins. Turn right on Honeymoon Trail after Wenger Feed Mill; 1/2 mile turn right onto Coleman Church Road. Farm on left after church.*

**Scherich, Rodney and Donna Jean** (724) 428-3555  
**Scherich's Simmental Farm**  
 325 Wheeling Creek Road, Windridge, PA 15380  
 Greene County  
 E-mail: [donnascherich@yahoo.com](mailto:donnascherich@yahoo.com)  
*From Waynesburg, take Route 21 West to Ryerson Station. Turn right on Wheeling Creek Road. Go one mile to first farm on left.*

***NO BULL TOO BIG OR NASTY***

S  
E  
M  
E  
N



***Semen Freezing since 1983***

***Semen Fertility Evaluations***

S  
E  
M  
E  
N

**ZIMMERMAN'S CUSTOM FREEZING**

131 Redwell Rd., New Holland, PA 17557  
 Phone: 717-355-2048 Cell: 717-940-1430  
[www.semenfreezing.com](http://www.semenfreezing.com)

[www.pajrsimmental.com](http://www.pajrsimmental.com)

Pennsylvania Junior  
Simmental Association



WE WANT  
YOUR NEWS!!!!!!

If you have any news, events, or show results (send us your county fair news and pictures!), please send to:

Annie Duncan  
E-mail: [simmtalker@yahoo.com](mailto:simmtalker@yahoo.com)

***E&R Farms, Inc***

*Pure Bred Simmental*



Randy R. Runk

Vice President  
& General Manager

17299 Hill Valley Road  
Shirleysburg, PA 17260  
(814) 542-2154





*The dam of this Champion sells with a full sib heifer calf at her side on May 3rd, 2014 at the Gettysburg Stars and Stripes Sale.*

**SVF Steel Force S701 X BF GCC 5918**

*Thanks to W&E Farms, the Whipkey family, of Holbrook, PA for their purchase of SSC Sheza Legend 38A as the High selling open heifer at the 2013 PA fall sale.*

*2 full sibs to this tremendous heifer sell on May 3rd, 2014 at the Gettysburg Stars and Stripes sale.*



**SSC Miss Foxy 217Z**

Beauty x MR NLC Upgrade

*Thanks to David and Jordan Carter of Concord, NC for their purchase of SSC Miss Foxy 217Z as the High selling lot at the 2013 Gettysburg Stars and Stripes sale.*



**Star ♦ BD: 5-8-11**

**SVF/NJC Built Right N48 x D&D Sunnys Delight**

2013 PA Farm Show Grand Champion Female (Jr. Show)  
2013 PA Farm Show Reserve Grand Champion Female (Open Show)  
2012 MD State Fair Intermediate Champion  
2012 KILE Intermediate Champion

**2013 PA Farm Show Premier Exhibitor  
Stewart's Simmental Cattle**

**Breeding Black and Red Simmental Cattle  
with performance and show ring style.**

Please contact us with your Simmental Cattle needs.

**Greg & Grady Stewart**  
2016 Armstrong Valley Road  
Halifax, PA 17032  
(717) 350-5235

**Sam Stewart**  
368 Stewart Drive  
Brookville, PA 15825  
(814) 952-2533

Contact us with your semen needs--Cattle Visions Semen Distributor



**Shipman, Dave and Marilyn** (724) 627-8903  
**Shipman's Simmentals**  
 134 Dillie Road, Sycamore, PA 15364  
 Greene County  
 E-mail: [ship\\_simmd@windstream.net](mailto:ship_simmd@windstream.net)  
*Ruff Creek Exit off Interstate 79. Take 221 N to 2nd left hand road. This will be Dillie. Farm is last residence on left.*

**Shoemaker, William E.** (814) 624-0667  
**Shoemaker's Simmentals** Cell: (412) 721-8814  
 3839 Milligans Cove Road, Manns Choice, PA 15550  
 Bedford County  
 E-mail: [shoesim@yahoo.com](mailto:shoesim@yahoo.com)  
*From the PA Turnpike (East), take the Bedford Exit. Then go 30 West to 31 West. It will turn into SR 96. Continue south and turn left at White Sulphur Springs Road. Farm is 2 miles on left. From the PA Turnpike (West), the Somerset Exit. Then to 31 East to Bard. Turn right at Bard and then left at SR 96. Turn Right at White Sulphur Springs Road. Farm is 2 miles on the left.*

**Smithson, Ricky, Debbie, and Shane** (443) 463-4641  
**Pond View Farm**  
 2531 Jolly Acres Road, White Hall, MD 21161  
 Harford County  
 E-mail: [rick@pondviewfarm.com](mailto:rick@pondviewfarm.com)  
 Website: [www.pondviewfarm.com](http://www.pondviewfarm.com)

**Snyder, Lee and Linda** (814) 374-4684  
**Harvest Plantation**  
 153 Susquehanna Drive, Franklin, PA 16323  
 Venango County  
 E-mail: [lsnyder1@zoominternet.net](mailto:lsnyder1@zoominternet.net)  
*Six miles west of Franklin on Route 322. Go one mile north on Route 427 then left on Blacktop Road, 1/2 mile on left.*

**Speicher, Joe, Doretta, Jamison, Winston, Laramie, and Ellyssa**  
**Allegheny Meadows** (814) 733-2775  
 1996 Allegheny Road, Manns Choice, PA 15550 Cell: (814) 285-1541  
 Bedford County  
 E-mail: [joeanddoretta@juno.com](mailto:joeanddoretta@juno.com)  
 Website: [www.AlleghenyMeadows.com](http://www.AlleghenyMeadows.com)  
*8.1 miles west of Manns Choice on Route 31 West.*

**Stewart, Greg and Sam** Greg: (717) 350-5235  
**Stewart's Simmental Cattle**  
 2016 Armstrong Valley Road, Halifax, PA 17032  
 Dauphin County  
 E-mail: [wgjstewart@hotmail.com](mailto:wgjstewart@hotmail.com)

## Pennsylvania Simmental Association

### Members of the Year



Junior

### Junior Member

Bridget Fox

From left: PSA President Laurie Meyers, Bridget Fox



Senior

### Senior Member

Cindy and Les Whitmoyer

From left: PSA President Laurie Meyers, Cindy and Les Whitmoyer

### Family

The Cowells  
 Jim and Billie



Breeder

### Breeder

Powell's Valley Simmentals  
 From left: Laurie Meyers, Vice President  
 Bradley Feight



**Summey, Troy III and Emily**  
**Circle S Acres and Stockyard Style**  
 503 Miller Road, Halifax, PA 17032  
 Dauphin County  
 E-mail: [emily\\_summey@hotmail.com](mailto:emily_summey@hotmail.com)  
 Website: [www.stockyardstyle.com](http://www.stockyardstyle.com)

(717) 644-3224

**Taylor, Ronald, Kathi, and Bailey**  
**White House Farm**  
 887 Hunlock Harveyville Road, Shickshinny, PA 18655  
 Luzerne County  
 E-mail: [taylorfarm@msn.com](mailto:taylorfarm@msn.com)  
*10 miles off US Rt. 11, on St. Rt. 4016.*

(570) 256-3482  
 Cell: (570) 578-3086

**Varner, Gary L. and Vicki**  
**Sorrell Acres Farm**  
 8436 Mountain Road, McAlisterville, PA 17049  
 Juniata County  
 E-mail: [gvarner@centurylink.net](mailto:gvarner@centurylink.net)

(717) 463-2513  
 Gary's Cell: (717) 512-1891  
 Vicki's Cell: (717) 724-7488

**Vossler, William T. (Tom) and Barbara**  
**Mountain View Farm**  
 665 Knoxlyn Road, Gettysburg, PA 17325  
 Adams County  
 E-mail: [tvossler@comcast.net](mailto:tvossler@comcast.net)  
 Website: [www.mountainviewsimmentals.com](http://www.mountainviewsimmentals.com)  
*From Rte 15 / Rt. 30 Interchange, take Rt. 30 West approximately 5 miles through and past Gettysburg. Left on Knoxlyn. 1.2 miles on Knoxlyn Road then right turn at Farm Road.*

(717) 337-1615  
 Cell: (717) 752-6823

**Wagner, Curry**  
**Curry Wagner Simmental**  
 1423 Sandbeach Road, Hummelstown, PA 17036  
 Dauphin County  
 E-mail: [Wagner@MHS-Pa.org](mailto:Wagner@MHS-Pa.org)

(717) 991-0387

**Weir, Mark and Lisa**  
 1175 Jerusalem School Road, Mount Wolf, PA 17347  
 York County  
 E-mail: [weirland@netzero.com](mailto:weirland@netzero.com)

(717) 266-2530

**Whipkey, Charles, Katrina, Wyatt, and Emmitt**  
**W&E Farm**  
 186 Tara Hill Road, Holbrook, PA 15341  
 Greene County  
 E-mail: [katrina.whipkey@yahoo.com](mailto:katrina.whipkey@yahoo.com)

(724) 499-5859

# Proudly serving Pennsylvania's Agriculture Communities since 1985.

- Sale Catalogs
- Directories
- Newsletters
- Banners
- Postcards
- Business Cards
- Sell Sheets
- Yard Signs



...and many more creative ideas!

Design • Print • Mail • Wide Format



**717.838.1527**  
**Fax: 717.838.5715**

**601 W. Main Street**  
**P.O. BOX 382**  
**Palmyra, PA 17078**

**White, Jeanne**  
**Simme Valley Ranch**  
6493 Stauber Road, Groton, NY 13073  
Cayuga County  
E-mail: [Jeanne@simmevalley.com](mailto:Jeanne@simmevalley.com)

Cell: (607) 423-4888

Website: [www.simmevalley.com](http://www.simmevalley.com)  
*Route 81, Exit 12. Right on 281, left on Rt. 90. Go 5.5 miles. Left on Salt Road. 2nd left on Stauber Road.*

**Whitmoyer, Les & Cindy**  
**Whitmoyer's Mountain View**  
1045 Pine Grove Road, Fredericksburg, PA 17026  
Lebanon County  
E-mail: [lwhitmoyer@hotmail.com](mailto:lwhitmoyer@hotmail.com)  
*Rt. 78 East of Rt. 81 to Exit 6. Turn left on Pine Grove Road—1 mile to first farm on right after Blue Mountain Road.*

(717) 865-2245  
Cell: (717) 673-4837

**Woolcock, Jerry and Ginger**  
**Woolcock Farms**  
38 Reese Road, Orangeville, PA 17859  
Columbia County  
E-mail: [gwoolcock@gmail.com](mailto:gwoolcock@gmail.com)  
*I-80, Exit 34, Route 42 North to Millville. At flashing light, take SR 254E 4.7 miles to Reese Road.*

(570) 458-5340



**Pennsylvania Simmental Association's  
2014 Board of Directors**

**From left:** Ron Dziembowski, Galen Graham, David Downs, PSA President  
Laurie Meyers, Les Whitmoyer, Jeff Feight, Annie Duncan,  
and Vice President Bradley Feight.

**Not pictured:** William Shoemaker and William T. Vossler.

**Pennsylvania Simmental Association**  
**Application for Membership**  
[www.pasimmental.com](http://www.pasimmental.com)

Member Name: \_\_\_\_\_

Farm Name: \_\_\_\_\_

Address: \_\_\_\_\_  
\_\_\_\_\_

City: \_\_\_\_\_ State: \_\_\_\_\_ Zip: \_\_\_\_\_

Telephone Number: (\_\_\_\_\_) \_\_\_\_\_ County: \_\_\_\_\_

Directions to Farm: \_\_\_\_\_  
\_\_\_\_\_  
\_\_\_\_\_

E-mail: \_\_\_\_\_

Web Site: \_\_\_\_\_

I am willing to work on a committee. My preference is \_\_\_\_\_

\$40.00 Full Member \_\_\_\_\_

\$35.00 Early Bird Discount \_\_\_\_\_ (To receive Early Bird pricing,  
application must be postmarked by December 15)

I agree to abide and be bound by the Constitution, By-Laws and regulations of the Pennsylvania Simmental Association, Inc.

Signature: \_\_\_\_\_ Date: \_\_\_\_\_

Send to:

**Vicki Varner**  
**8436 Mountain Road • McAlisterville, PA 17049**  
**Phone: (717) 463-2513**  
**E-mail: [gvarner@centurylink.net](mailto:gvarner@centurylink.net)**

## Membership Listing Cross-Referenced by Farm Name

2nd Chances Cattle Co.....	Wesley, Hunter, & Keller Metzker.....	(814) 832-2342
Allegheny Meadows .....	Joe & Doretta Speicher .....	(814) 733-2775
.....	Jamison, Winston, Laramie, & Ellyssa Speicher .....	
Back Road Ranch.....	Steve & Barb Lucariello .....	(716) 761-3509
Belmont Steaks Farm .....	Larry & Judy Bullis .....	(717) 334-6323
Brad-Fields Farm .....	Michael Bradfield.....	(717) 328-4177
Buena Vista Simmentals .....	Jim & Betty Bosley.....	(304) 530-6636
CAM Cattle Company .....	Chris & Alissa Mytar .....	(217) 741-8892
Campbell Show Calves.....	James & Jackie Campbell .....	(724) 852-1622
Carlisle Farm.....	David & Barbara Carlisle.....	(724) 587-0243
Chambers Simmentals .....	Donald E. Chambers, Jr. ....	(814) 952-3670
Cher-O-Kee Cattle Co.....	Edward J. & Toni Gail Regula .....	(724) 439-4179
Circle S Acres/Stockyard Style.....	Troy III & Emily Summey .....	(717) 644-3224
Classic Farms.....	Chris & Kellee Brown .....	(304) 366-5353
.....	Mollee, Tyler, & Carter Brown .....	
CLO Simmentals.....	Cliff & Lynn Orley.....	(717) 964-2243
Codorus Furnace Farm.....	Ray E. & Donna Hoover.....	(717) 266-2649
Crum's Circle C .....	Bob & Jenny Crum .....	(740) 213-7727
Curry Wagner Simmental.....	Curry Wagner.....	(717) 991-0387
Double "B" Venture .....	John & Rita Bayler.....	(717) 865-4420
Double RD Farm.....	Ron & Rhonda Dziembowski .....	(508) 868-8836
Double R Simmentals .....	Bob Roberts .....	(740) 435-0297
E&R Farms .....	Randy Runk .....	(814) 542-2154
Elk County Simmentals .....	Albert & Denise Casilio.....	(814) 965-5079
Feight's Farm .....	Jeff & Sherry Feight.....	(814) 735-3797
.....	Bradley Feight.....	(814) 502-8973
Fenton River Farm .....	Richard E. Claus .....	(860) 429-9500
Folly Farm.....	William & Kathleen Lay.....	(410) 679-0882
Frosty Springs Farm.....	Jim & Billie Cowell .....	(724) 627-8271
Fry's Beef Farm .....	David, Linda, Jonathan, Jennifer, & Katie Fry .....	(717) 436-9708
Goss Family Farm .....	Tim Goss .....	(717) 543-6128
Harris Farms.....	John & Vickie Harris.....	(814) 339-7752
Harvest Plantation.....	Lee & Linda Snyder.....	(814) 374-4684
Highfields Farm .....	Tom & Cheryl Monroe.....	(301) 293-3274
Hillcrest Farm .....	Gary, Cindy, Stephanie, & John Bertrand.....	(508) 832-8313
Hillside Acres.....	Fred & Suzie Daum .....	(814) 354-2280
Homestead Acres .....	Ron, Amy, & Molly Ruggles .....	(740) 972-1030
Hudson Pines Farm .....	David Rockefeller, Owner .....	(914) 631-1154
.....	Miranda Kaiser, Executive Director/Owner .....	(914) 631-1154
.....	John Walston, General Manager .....	(518) 851-2000
.....	Ryan Haefner, Farm Manager .....	(815) 499-0522
JEH Simmentals.....	Jack Herr .....	(717) 507-8342

## Membership Listing Cross-Referenced by Farm Name

(CONTINUED)

Kelley Farms.....	John A. & Tricia Kelley.....	(814) 733-4705
Keystone Cattle Service.....	Cliff & Lynn Orley.....	(717) 964-2243
KNT Beef Farm .....	Ken, Tina, Noah, Kaleb, & Kezia Loht.....	(717) 543-6185
Ladybug Farm .....	Ken & Mary Gumaer .....	(716) 735-7904
Limbert Livestock Company .....	Adam & Sarah Limbert.....	(570) 617-7620
Lenzner Farms .....	John E. & Geraldine Lenzner.....	(412) 741-2672
McClure Mills Farms.....	C. Arnold & Linda McClure .....	(814) 542-4748
Messick Farms .....	Joe & Mylin Messick.....	(717) 944-3500
.....	Sally Messick Runkle .....	(717) 944-1707
Mountain View Farm .....	William T. (Tom) & Barbara Vossler .....	(717) 337-1615
NikLen Valley Farm .....	Galen & Nichole Graham .....	(717) 968-3643
Norwin Simmental .....	Paul E. Clepper .....	(717) 960-0182
Old Foundation Farm.....	Les & Bernie Brown .....	(814) 967-3503
Palmer Cattle Co.....	William Palmer .....	(814) 282-1493
Paulus Farms.....	Millard F. Paulus IV.....	(856) 358-3980
PA Center for Beef Excellence.....	Ann Nogan .....	(717) 705-1689
Pond View Farm.....	Ricky, Debbie, & Shane Smithson.....	(443) 463-4641
Porter's Simmental Lake Ranch .....	Ralph & Cindy Porter .....	(607) 565-2452
Powell's Valley Simmentals.....	Laurie Meyers .....	(717) 350-2516
.....	Annie Duncan .....	(717) 350-2515
SASA Farms.....	Bruce Gromlich.....	(610) 562-5737
Scherich's Simmental Farm .....	Rodney & Donna Jean Scherich .....	(724) 428-3555
Serenity Hills Farm .....	Fred, Kim, Ellie, & Emily Benner .....	(717) 320-2303
Shipman's Simmentals.....	Dave & Marilyn Shipman .....	(724) 627-8903
Shoemaker's Simmentals.....	William E. Shoemaker .....	(814) 624-0667
Simme Valley Ranch.....	Jeanne White .....	(607) 423-4888
Smoky Valley Farm.....	Randy & Heather Rohm.....	(724) 484-0316
Sorrell Acres Farm .....	Gary L. & Vicki Varner.....	(717) 463-2513
Ste-Wan Farms .....	Steve & Wanda Hook.....	(570) 837-7020
.....	Michael & Rhonda Arndt.....	(570) 847-9844
Stewart's Simmental Cattle.....	Greg Stewart .....	(717) 350-5235
.....	Sam Stewart .....	(814) 952-2533
Stony Creek Simmentals.....	Gene & Elvira McMichael.....	(814) 623-7974
Sunrise Farms.....	Jonah & Abbey Broughton.....	(585) 356-0906
SVJ/D&D Cattle Company.....	Valerie & Justin Mankey & Duane Snee .....	(724) 554-0446
Tri-J Farm .....	William & Betty Lou Dell .....	(717) 359-8283
W&E Farm.....	Charles, Katrina, Wyatt, & Emmitt Whipkey.....	(724) 499-5859
Wanna-B-Rich Farm .....	Harvey E. & Dena Baskin.....	(860) 923-9277
White House Farm .....	Ronald, Kathi, & Bailey Taylor .....	(570) 256-3482
Whitmoyer's Mountain View.....	Les & Cindy Whitmoyer.....	(717) 865-2245
Woodview Simmental Farm.....	Frank & Susan Glass.....	(724) 599-4612
Woolcock Farms .....	Jerry & Ginger Woolcock .....	(570) 458-5340



# Very High Caliber



**....yet very affordable!**

- Long lasting aluminum construction that resists corrosion.
- The industry's original fully riveted trailer which is stronger than a welded trailer.
- Superior full frame gate construction for reliable containment.
- Dense raised diamond plate tread floor for sure footing.
- Numerous gate and door options for convenience.
- Available from 16' to 32' for versatility
- Embossed side panels for greater strength.
- Top dollar at trade in time for best realized value.

**CALL YOUR AUTHORIZED WILSON DEALER FOR MORE INFORMATION!**

**EMM**  
**SALES & SERVICE, INC.**

**(800) 288-2081**  
**www.emmsales.com**  
**141 Zooks Mill Road**  
**Brownstown, Pa 17508**

## FRAME SCORE CHART

### Bull Hip Height (Inches)

Months of Age	Frame Score						
	3	4	5	6	7	8	9
5	37.5	39.5	41.6	43.6	45.6	47.7	49.7
6	38.8	40.8	42.9	44.9	46.9	48.9	51.0
7	40.0	42.1	44.1	46.1	48.1	50.1	51.2
8	41.2	43.2	45.2	47.2	49.3	51.3	53.3
9	42.3	44.3	46.3	48.3	50.3	52.3	54.3
10	43.3	45.3	47.3	49.3	51.3	53.3	55.3
11	44.2	46.2	48.2	50.2	52.2	54.2	56.2
12	45.0	47.0	49.0	51.0	53.0	55.0	57.0
13	45.8	47.8	49.8	51.8	53.8	55.8	57.7
14	46.5	48.5	50.4	52.4	54.4	56.4	58.4
15	47.1	49.1	51.1	53.0	55.0	57.0	59.0
16	47.6	49.6	51.6	53.6	55.6	57.5	59.5
18	48.5	50.5	52.4	54.4	56.4	58.4	60.3
20	49.1	51.0	53.0	55.0	56.9	58.9	60.9

### Heifer Hip Height (Inches)

Months Of Age	Frame Score						
	3	4	5	6	7	8	9
5	37.2	39.3	41.3	43.4	45.5	47.5	49.6
6	38.2	40.3	42.3	44.4	46.5	48.5	50.6
7	39.2	41.2	43.3	45.3	47.4	49.4	51.5
8	40.1	42.1	44.1	46.2	48.2	50.2	52.3
9	40.9	42.9	44.9	47.0	49.0	51.0	53.0
10	41.6	43.7	45.7	47.7	49.7	51.7	53.8
11	42.3	44.3	46.4	48.4	50.4	52.4	54.4
12	43.0	45.0	47.0	49.0	51.0	53.0	55.0
13	43.6	45.5	47.5	49.5	51.5	53.5	55.5
14	44.1	46.1	48.0	50.0	53.0	54.0	56.0
15	44.5	46.5	48.5	50.5	52.4	54.4	56.4
16	44.9	46.9	48.9	50.8	52.8	54.8	56.7
18	45.6	47.5	49.5	51.4	53.4	55.3	57.3
20	46.0	47.9	49.8	51.8	53.7	55.6	57.6

Simmental Gestation Table Based on 285 Days

JAN	OCT	FEB	NOV	MAR	DEC	APR	JAN	MAY	FEB	JUN	MAR	JUL	APR	AUG	MAY	SEP	JUN	OCT	JUL	NOV	AUG	SEP	DEC	SEP	OCT
1	13	1	13	1	11	1	11	1	10	1	13	1	12	1	13	1	13	1	13	1	13	1	13	1	12
2	14	2	14	2	12	2	12	2	11	2	14	2	13	2	14	2	14	2	14	2	14	2	14	2	13
3	15	3	15	3	13	3	13	3	12	3	15	3	14	3	15	3	15	3	15	3	15	3	15	3	14
4	16	4	16	4	14	4	14	4	13	4	16	4	15	4	16	4	16	4	16	4	16	4	16	4	15
5	17	5	17	5	15	5	15	5	14	5	17	5	16	5	17	5	17	5	17	5	17	5	17	5	16
6	18	6	18	6	16	6	16	6	15	6	18	6	17	6	18	6	18	6	18	6	18	6	18	6	17
7	19	7	19	7	17	7	17	7	16	7	19	7	18	7	19	7	19	7	19	7	19	7	19	7	18
8	20	8	20	8	18	8	18	8	17	8	20	8	19	8	20	8	20	8	20	8	20	8	20	8	19
9	21	9	21	9	19	9	19	9	18	9	21	9	20	9	21	9	21	9	21	9	21	9	21	9	20
10	22	10	22	10	20	10	20	10	19	10	22	10	21	10	22	10	22	10	22	10	22	10	22	10	21
11	23	11	23	11	21	11	21	11	20	11	23	11	22	11	23	11	23	11	23	11	23	11	23	11	22
12	24	12	24	12	22	12	22	12	21	12	24	12	23	12	24	12	24	12	24	12	24	12	24	12	23
13	25	13	25	13	23	13	23	13	22	13	25	13	24	13	25	13	25	13	25	13	25	13	25	13	24
14	26	14	26	14	24	14	24	14	23	14	26	14	25	14	26	14	26	14	26	14	26	14	26	14	25
15	27	15	27	15	25	15	25	15	24	15	27	15	26	15	27	15	27	15	27	15	27	15	27	15	26
16	28	16	28	16	26	16	26	16	25	16	28	16	27	16	28	16	28	16	28	16	28	16	28	16	27
17	29	17	29	17	27	17	27	17	26	17	29	17	28	17	29	17	29	17	29	17	29	17	29	17	28
18	30	18	30	18	28	18	28	18	27	18	30	18	29	18	30	18	30	18	30	18	30	18	30	18	29
19	31	19	31	19	29	19	29	19	28	19	31	19	30	19	31	19	31	19	31	19	31	19	31	19	30
20	1	20	1	20	30	20	30	20	29	20	1	20	1	20	1	20	1	20	1	20	1	20	1	20	1
21	2	21	2	21	31	21	31	21	30	21	2	21	2	21	2	21	2	21	2	21	2	21	2	21	2
22	3	22	3	22	1	22	1	22	3	22	3	22	3	22	3	22	3	22	3	22	3	22	3	22	3
23	4	23	4	23	2	23	2	23	4	23	4	23	4	23	4	23	4	23	4	23	4	23	4	23	4
24	5	24	5	24	3	24	3	24	5	24	5	24	5	24	5	24	5	24	5	24	5	24	5	24	5
25	6	25	6	25	4	25	4	25	6	25	6	25	6	25	6	25	6	25	6	25	6	25	6	25	6
26	7	26	7	26	5	26	5	26	7	26	7	26	7	26	7	26	7	26	7	26	7	26	7	26	7
27	8	27	8	27	6	27	6	27	8	27	8	27	8	27	8	27	8	27	8	27	8	27	8	27	8
28	9	28	9	28	7	28	7	28	9	28	9	28	9	28	9	28	9	28	9	28	9	28	9	28	9
29	10	29	10	29	8	29	8	29	10	29	10	29	10	29	10	29	10	29	10	29	10	29	10	29	10
30	11	30	11	30	9	30	9	30	11	30	11	30	11	30	11	30	11	30	11	30	11	30	11	30	11
31	12	31	12	31	10	31	10	31	12	31	12	31	12	31	12	31	12	31	12	31	12	31	12	31	12



*Looking to target the right market  
for your purebred and percentage  
Simmental cattle???*

## Consign to PSA sponsored sales!

The Pennsylvania Simmental Association's two sponsored sales, the *PA Beef Expo Simmental Female Sale* held in March and the *PA Fall Classic Sale* held in October, are excellent ways of selling your cattle. The PSA is committed to the continued success of their sales, which reach a wide-ranging market -- from commercial producers seeking seedstock, to juniors searching for their next winners. These sales are right on target!



The *PA Beef Expo Simmental Female Sale* is held in conjunction with the Performance Tested Bull Sale at the Livestock Evaluation Center, Pennsylvania Furnace, PA. Because of the facilities available for the sale, halter broken cattle are preferred, however, there are accommodations for a few non-halter broken animals.

The *PA Fall Classic Sale*, held at the Greene County Fairgrounds, Waynesburg, PA, on the fourth Saturday of October, welcomes consignments of heifers, cows, and bulls (and show steer prospects, too!). As this sale has been held in the same location for many years, it is well attended by cattlemen from several states looking for quality cattle to improve their herds.



**For more information about these sales, please  
contact PSA President Laurie Meyers  
Phone: 717-350-2516  
Email: [Laurie@pvsimm.com](mailto:Laurie@pvsimm.com)**

# SVJ FARM AND D&D CATTLE CO. FOUNDATION FEMALES...



SVJ STYLISH ONE



ADKINS/LAZYH BLK STAR X702



SVJ CNS QUEEN ME



TRIPLE C LIZZIE



WAR SHEZA DANDY



TICES ZANY

GREAT COW FAMILIES CREATE  
PROGENY LIKE THESE CHAMPION FEMALES



SVJ LIZZIES DREAM  
RESERVE CHAMPION JUNIOR SHOW 2013 NWSS  
HIGH SELLING OPEN HEIFER IN OUR SALE



SVJ SHE'S THE DREAM  
RESERVE CHAMPION OPEN SHOW 2013 NWSS  
SOLD PRIVATELY OFF THE FARM



VALERIE MANKEY & DUANE SNEE  
456 RINGLAND RIDGE ROAD :: AMITY, PA 15311  
VALERIE CELL: 724-554-0446 :: HOME: 724-263-1725  
EMAIL: VALERIEMANKEY@EARTHLINK.NET

PAUL MAULSBY  
HERD CONSULTANT  
PHONE: 979-587-2835  
EMAIL: MAULSBY@YAHOO.COM

## Performance Advocate Program

Check your Performance Advocate Score

### ASA Performance



Performance Advocate Scores are now displayed for Total Herd Enrollment (THE) herds on the American Simmental Website, [www.simmental.org](http://www.simmental.org). Under "Data Entry" - Online, the inventory web page now displays a "Performance Advocate Score" along with the amount of data reported relative to the data expected to be reported. The score and counts are displayed for the calf crop (year-season) you designate. A score of 500 or more is needed to be designated as a "Performance Advocate".

Additionally under Reports from the "Herd Mgmt" tab you can get a list of all data you reported on each calf for the year and season you specify. On the Reports web page (under the "Herd Mgmt" tab) change the group option to "Inventory", enter the year and season, choose the performance advocate report and select "Generate Report" button. Use this feature to see what information has and has not been reported for each calf.

### Recent Performance Advocate Scores of Pennsylvania Simmental Association Members

#### Fall 2011

Score: 500 — Tied for 19th place

Smoky Valley Farm  
West Finley, PA

Score: 500 — Tied for 19th place

CLO Simmentals  
Lebanon, PA

Score: 500 — Tied for 19th place

Jeff & Sherry Feight,  
Breezewood, PA

#### Spring 2012

Score: 600 — Tied for 1st place

Jeff & Sherry Feight,  
Breezewood, PA

Score: 500 — Tied for 20th place

Smoky Valley Farm  
West Finley, PA





**RULES AND BY-LAWS**  
**PENNSYLVANIA SIMMENTAL ASSOCIATION, INC.**  
**BY-LAWS**  
**ARTICLE 1**  
**NAME**

1. The name of this corporation shall be the Pennsylvania Simmental Association, Inc.

**ARTICLE II**  
**AIMS AND OBJECTIVES**

1. The Pennsylvania Simmental Association has as its primary objective the development and promotion of the Simmental breed of cattle in the State of Pennsylvania. It is believed that the Simmental Breed can make an important contribution to the improvement of the cattle industry in Pennsylvania.

**ARTICLE III**  
**MEMBERSHIP**

1. Application for membership must be made in writing to the Secretary-Treasurer of the Association.
2. The Board of Directors shall have the power to accept or reject any applications for membership. The Board of Directors shall have the power to suspend or expel any member who conducts himself in a manner detrimental to the Association or fails to comply with the rules and regulations without refund of membership fees or dues.
3. A member whose membership has been revoked must make a written application of reinstatement and can be reinstated only after having received three-fourths (3/4) affirmative vote from the Board of Directors.
4. Legal Partnerships or Incorporated Companies shall specify in writing the person authorized to vote or act in their behalf at any meeting of the Association.
5. Members may vote by proxy at the Annual Meeting if the delegate has in his possession the proxy of the undersigned membership, executed and sworn before a Notary Public.
6. Active Members shall be owners or breeders of cattle who pay the membership fee, and who are in good standing.
7. Associate Members are non-voting members who may be interested in advancement of the Association. Associate Members may not vote or hold elective offices.
8. (Amended January 14, 2006) Junior Members shall be those under 22 years of age who have paid the prescribed fee. Junior Members are not entitled to vote or to hold elective office except as herein after provided.
9. Honorary Members are individuals who have made an outstanding contribution to the development of the Simmental Breed in the State of Pennsylvania. They are elected by the general membership of the Association provided they have been recommended for such appointment by a prior resolution of the Board of Directors. Honorary memberships are not entitled to vote and may not hold elective offices.
10. Annual Dues: \$40.00 for Senior Members, \$10.00 for Junior Members.

**ARTICLE IV**  
**OFFICERS AND DIRECTORS**

**1. Duties of Officers**

- a. The President shall be the Chief Executive Officer of the Association. He shall preside at its meetings. He shall carry on the business of the Association under the Articles of Incorporation, the by-laws, and the instructions of the Board of Directors.
- b. The Vice President, in the absence of the President, or at his request, shall perform the duties of said officer.

c. The Secretary-Treasurer may be a member of the Board of Directors, or he may be appointed or hired by the Directors. He shall manage and administer the business affairs of the Association in accordance with the policy and directives from the Board of Directors as communicated to him by the President. He shall be the official custodian of the seal and the records of the Association. He shall see to the financial affairs of the Association.

**2. Duties of the Directors**

a. (Revised March 28, 1986) The affairs of the Association shall be managed by a Board of Directors. Adult Directors shall be elected by written ballot at the Annual Meeting of the Association. The Board of Directors shall consist of ten (10) Adult members and one (1) Junior member. Each adult Director shall be limited to two (2) three (3) year consecutive terms. He shall again be eligible for re-election after one (1) year's absence. The Junior Director shall be elected by written ballot at the Annual Meeting of the Pennsylvania Junior Simmental Association and shall serve a one (1) year term of office and shall be limited to two (2) consecutive terms. He shall again be eligible for re-election after one (1) year's absence.

b. The Directors shall elect from among the active members of the Pennsylvania Simmental Association a President and Vice President whose terms of office shall be one (1) year or until the next annual meeting. The Board of Directors may appoint additional officers as they see fit in order to carry out efficiently the affairs of the Association. However, only active paid up members in good standing may be officers.

c. The Board of Directors shall have the authority to appoint anyone that they see fit to the Board of Directors, to serve a one (1) year term.

d. Each person who shall serve as a Director or Officer of the Association shall be indemnified by the Association against all costs and expenses incurred by or imposed upon him, in connection with or resulting from any action, suit or proceeding to which he is, or may be made a party, by reason of his being or having been a Director or Officer of the Association. Such indemnifications shall include settlements made in amounts approved by the Board of Directors at the time such settlement is effected, whether or not such person is a Director or Officer at the time such costs are incurred by or imposed upon him. Except, the indemnifications shall not apply where he shall be finally adjudged to be liable by reason of having been negligent, guilty of misconduct or otherwise derelict in the performance of his duty as an Officer or Director. The rights of indemnification herein provided shall not be exclusive of other rights to which such person may be entitled as a matter of law.

**ARTICLE V**  
**MEETINGS**

**1. Membership Meetings**

a. An Annual Membership Meeting shall be held once in every calendar year with a maximum time of fifteen (15) months between meetings. The time and place shall be designated by the Board of Directors. All members will be notified by letter or in the official organ of the Association at least thirty (30) days prior to such meeting. The order of business shall be mentioned in the notice of the meeting.

b. A quorum for Annual Membership Meeting shall consist of the Active Members in good standing present.

c. Only Active Members who are in good standing and those whose membership is paid are entitled to vote at any Annual Membership Meeting.

d. Standard parliamentary procedure will be followed at all meetings of the Association membership and at all meetings of the Board of Directors.

e. Special membership meetings may be held at the discretion of the Board of Directors. All members will be notified by letter at least ten (10) days prior to the meeting.

date. Special business shall be mentioned in the notice and no other business shall be transacted.

**2. Board of Directors Meeting**

- a. The regular meeting of the Board of Directors shall be held each year in conjunction with and at the same place as the Annual Membership Meeting.
- b. In addition to the meeting provided for in paragraph "a" above, the Directors shall meet annually at a time and place to be selected by the Board of Directors. This meeting shall occur approximately six (6) months prior to the next Annual Membership Meeting.
- c. Special Meetings of the Board of Directors may be held on call of the President by giving ten (10) days notice in writing of time, place and purpose.
- d. Five (5) Directors shall constitute a quorum at any Directors Meeting.

**ARTICLE VI  
COMMITTEES**

**1. Rules Committee**

It shall be the duty of this Committee to interpret all rules and regulations, and to recommend such changes as they deem necessary to the Board of Directors for their approval.

**2. Financial Committee**

The Secretary-Treasurer shall be the Chairman of the two (2) Directors. Their purpose shall be to prepare a budget and submit it to the Board of Directors for their approval. They shall also make recommendations to the Board of Directors for the investment of available funds.

**3. Exhibition Committee**

This Committee shall make recommendations pertaining to live animal and carcass display.

**4. Membership Committee**

Shall promote and encourage membership in the Association.

**5. Sales Committee**

Shall set rules which uphold the performance and quality of the Simmental cattle in state sanctioned sales.

**6. Promotion Committee**

Shall make recommendations concerning the advertising and promotion of Simmental cattle to insure the proper image at sales.

**ARTICLE VII  
BY-LAW AMENDMENTS**

1. The Board of Directors shall have the power to amend the By-Laws of this organization by a three-fourths (3/4) majority vote.
2. Any change or revision of the By-Laws as a result of Board action shall become effective within thirty (30) days after which such change is published and every member is notified.
3. Any amendments made by the Board of Directors may be suspended if the Secretary-Treasurer received a petition signed by ten percent (10%) of the membership within sixty (60) days from the date of notification of the change or revisions.
4. Any such action of the Board of Directors may be subject to the approval of the membership at the next Annual Membership Meeting.

# STEIN-WAY EQUIPMENT

Built Stronger. Lasts Longer.



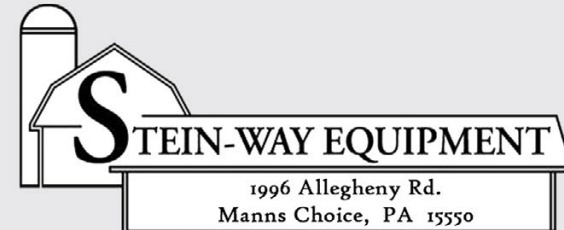
Auto Release Self-Locks

Also selling...

- Custom fit barn gates
- Slant bar feed panels
- Stock size pasture gates
- Jug, Miraco & Ritchie waterers



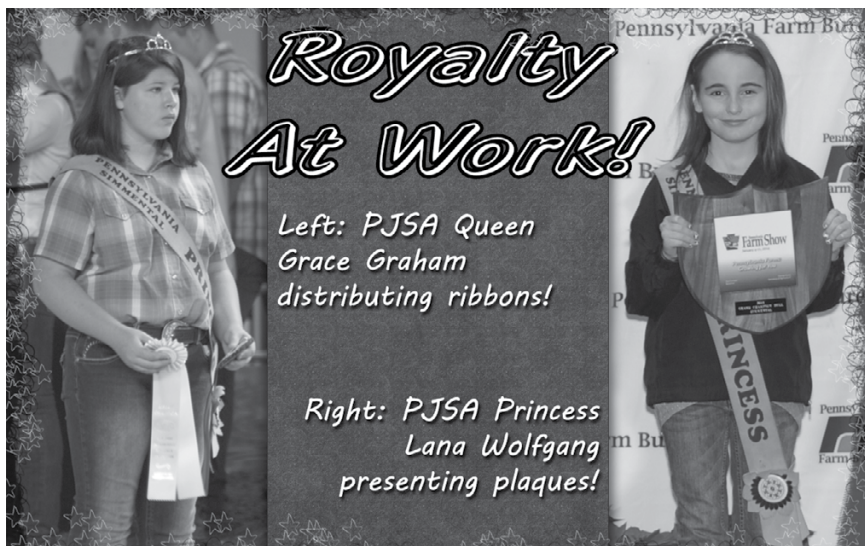
NEW! Bale Boss II - Designed for Large Square Bales



814-733-2775 • 1-888-605-2422

[www.steinwayequipment.com](http://www.steinwayequipment.com)





## Royalty At Work!

Left: PJSA Queen  
Grace Graham  
distributing ribbons!

Right: PJSA Princess  
Lana Wolfgang  
presenting plaques!

## Pennsylvania Junior Simmental Association

Please visit our website, [www.pajrsimmental.com](http://www.pajrsimmental.com)

### PJSA Advisors

**Sarah Limbert**  
119 Parallel Road  
Pine Grove, PA 17963  
(570) 617-7620  
[sarah13mae@hotmail.com](mailto:sarah13mae@hotmail.com)

**Rhonda Arndt**  
441 Hillside Drive  
Middleburg, PA 17842  
(570) 847-9844  
[farmchic3@hotmail.com](mailto:farmchic3@hotmail.com)

**Brent and Lori Fox**  
169 Dellville Road  
Duncannon, PA 17020  
717-649-2192  
[bfox5@ptd.net](mailto:bfox5@ptd.net)

### Officers and Royalty

**President**  
**Emmett Fox**  
169 Dellville Road  
Duncannon, PA 17020  
(717) 649-2192

**Treasurer**  
**Grace Graham**  
13820 Wolf Road  
Felton, PA 17322  
(717) 968-6635

**PSA Queen**  
**Grace Graham**  
13820 Wolf Road  
Felton, PA 17322  
(717) 968-6635

**Vice President**  
**Levi Graham**  
13820 Wolf Road  
Felton, PA 17322  
(717) 968-6635

**Secretary**  
**Alyssa Angelo**  
22020 Sherred Hill Road  
Venango, PA 16440

**PSA Princess**  
**Lana Wolfgang**  
704 Breezewood Drive  
Mechanicsburg, PA 17055  
(717) 991-5812

## Pennsylvania Junior Simmental Association

### Application for Membership

[www.pajrsimmental.com](http://www.pajrsimmental.com)

Member Name: \_\_\_\_\_ Birth Date: \_\_\_\_\_

Farm Name: \_\_\_\_\_

Address: \_\_\_\_\_

City: \_\_\_\_\_ State: \_\_\_\_\_ Zip: \_\_\_\_\_

Telephone Number: (\_\_\_\_\_) \_\_\_\_\_ County: \_\_\_\_\_

E-mail: \_\_\_\_\_ Web Site: \_\_\_\_\_

\$10.00 Junior Membership \_\_\_\_\_

Signature \_\_\_\_\_ Date: \_\_\_\_\_

Send to:

**Sarah Limbert**  
119 Parallel Road • Pine Grove, PA 17963  
Phone: (570) 617-7620 • E-mail: [sarah13mae@hotmail.com](mailto:sarah13mae@hotmail.com)

Save the  
Date!

**Friday, May 2nd, 2014**  
**Something for Everyone**

**3rd Annual All Breed Sale**

Sponsored by:



Sale is held in conjunction with the Big East  
Youth and Jackpot Show at Eastern States  
Expo Springfield, MA

If you have any questions,  
please contact:

**Ron Dziembowski**  
(508) 868-8836

**Gary Bertrand**  
(774) 272-1236

**Go to [SNESA.org](http://SNESA.org) for more information**

## WE ARE.....PENN STATE ANIMAL SCIENCE!



2013 Penn State Livestock Judging Team with coach, Ben Williamson

### TWO OPTIONS FOR THE ANIMAL SCIENCE MAJOR

- Business/Management—preparation for agribusiness, farm management, and sales/technical service careers
- Science—preparation for veterinary, graduate, and other professional schools

### BLOCK AND BRIDLE CLUB

- Members develop skills in leadership, teamwork, and communications
- Hands-on opportunities with animals at KILE, Club Calf Sale, and Little International Livestock Exposition

### LIVESTOCK JUDGING TEAM


- Travel and judge premier livestock across the country

### HANDS-ON EXPERIENCE

- Work and/or live at one of seven animal facilities
- Assist with or conduct your own research
- Internships and/or externship opportunities

### SCHOLARSHIPS

- \$1.8 million in the College of Agricultural Sciences



**PENN STATE**

Department of Animal Science

For more information contact Jana Peters • [jpeters@psu.edu](mailto:jpeters@psu.edu) • 814-863-4198

[animalscience.psu.edu](http://animalscience.psu.edu)

## Pennsylvania Junior Simmental Association Members

**Angelo, Alyssa**.....  
 22020 Sherred Hill Road, Venango, PA 16440  
 E-mail: [alangelo@psdmail.org](mailto:alangelo@psdmail.org)

**Balthaser, Mark**.....(610) 488-6389  
 52 Tulley Drive, Bernville, PA 19506

**Baron, Donald** .....  
 18469 Price Road, Saegertown, PA 16433  
 E-mail: [dbaron40@yahoo.com](mailto:dbaron40@yahoo.com)

**Benner, Emily** .....(717) 436-2745  
 429 Happy Hollow Road, Mifflintown, PA 17059  
 E-mail: [emilysbenner12@yahoo.com](mailto:emilysbenner12@yahoo.com)

**Berry, Austin**.....  
 13471 RT 35 South, Mifflin, PA 17058  
 E-mail: [austinberryracin@yahoo.com](mailto:austinberryracin@yahoo.com)

**Berry, Nathan** .....  
 13471 RT 35 South, Mifflin, PA 17058  
 E-mail: [Berryfam4@centurylink.net](mailto:Berryfam4@centurylink.net)

**Downs, Sara**.....(724) 376-7195  
 194 Stock Farm Road, Jackson Center, PA 16133  
 E-mail: [saraedowns@yahoo.com](mailto:saraedowns@yahoo.com)

**Fox, Bridget** .....(717) 329-9101  
 169 Dellville Road, Duncannon, PA 17020  
 E-mail: [12bfox@gmail.com](mailto:12bfox@gmail.com)

**Fox, Emmett** .....(717) 649-2192  
 169 Dellville Road, Duncannon, PA 17020  
 E-mail: [efox717@gmail.com](mailto:efox717@gmail.com)

**Fox, Wyatt**.....(717) 649-2192  
 169 Dellville Road, Duncannon, PA 17020  
 E-mail: [bfox5@ptd.net](mailto:bfox5@ptd.net)

**Fry, Jennifer** .....(717) 436-9708  
 20389 RT 35 South, Mifflin, PA 17058

**Fry, Katie** .....(717) 436-9708  
 20389 RT 35 South, Mifflin, PA 17058



# Porter's Simmental Lake Ranch



The Porter Family  
81 Porters Simmental Lane  
Waverly, NY 14892  
Phone: (607) 565-2452 Fax: (607) 565-8670  
E-mail: portersimm@clarityconnect.com  
Web site: www.portersconcrete.com



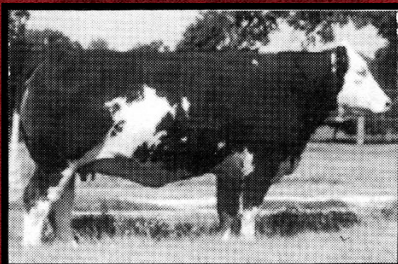
## Full Fleckvieh

### T2 Astrid F17



*Astrid is a star in every sense of the word. Her pedigree includes the great Rachel cow family which has proved to be one of the most prolific producers of great females of any cow family in North America. She is one of our top donor cows.*

### Ms JMC Else G391



*Else is a truly unique full Fleckvieh cow. She is an extremely long, thick, attractive, Holb daughter out of the great Luba cow. She is one of our top donor cows.*

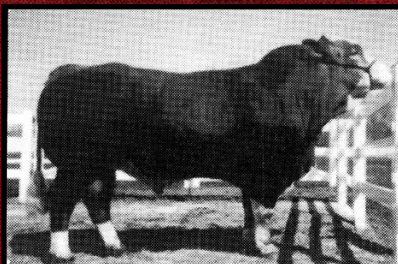
*We have been fortunate to assemble a small group of quality full Fleckvieh bulls as well as excellent donor cows, some of which will be flushed for the first time this year. Calves out of our superior full Fleckvieh bulls, Hafke and Kaiser are weaning at astonishing rates.*

### Mr JMC Hafke F392



*Hafke is the best bull Fleckvieh son alive in North America today. Here is an opportunity to buy semen out of a known son of "Hafke", the great German meat sire known for tremendous muscling.*

### Mr JMC Kaiser F302



*Kaiser is a son out of Great Guns Karl 17C, and his dam is Adria 11A, one of the most powerful Fleckvieh cows in the breed today. He is dark red, double ring-eyed, with tremendous muscling from front to rear.*

*Semen \$25 a straw, 5-straw minimum  
Call us today for information about embryos.*

## Pennsylvania Junior Simmental Association Members

(CONTINUED)

**Franck, Shawna**.....(570) 966-7669  
9020 Buffalo Road, Mifflinburg, PA 17844  
E-mail: Franck@windstream.net

**Goss, Trent**.....(717) 543-6128  
90 Decatur Road, McClure, PA 17841  
E-mail: gossfamilyfarm@gmail.com

**Graham, Grace**.....(717) 968-6635  
13820 Wolf Road, Felton, PA 17322  
E-mail: niklvalley@aol.com

**Graham, Levi**.....(717) 968-6635  
13820 Wolf Road, Felton, PA 17322  
E-mail: niklvalley@aol.com

**Gromlich, Austin**.....(610) 562-5737  
121 Schappell Road, Hamburg, PA 19526  
E-mail: farmitmaybe@cooper.net

**Gromlich, Colby**.....(610) 562-5737  
121 Schappell Road, Hamburg, PA 19526  
E-mail: farmitmaybe@cooper.net

**Gromlich, Dalton "DJ"**.....(610) 562-5737  
121 Schappell Road, Hamburg, PA 19526  
E-mail: farmitmaybe@cooper.net

**Herman, Blake**.....(570) 837-8916  
1841 Bailey Hill Road, Beavertown, PA 17813

**Kutz, Brandon**.....  
292 Krick Lane, Hamburg, PA 19526  
E-mail: BKutz4020@yahoo.com

**McCloskey, Kayla**.....(570) 658-2611  
61 McKnight Road, McClure, PA 17841

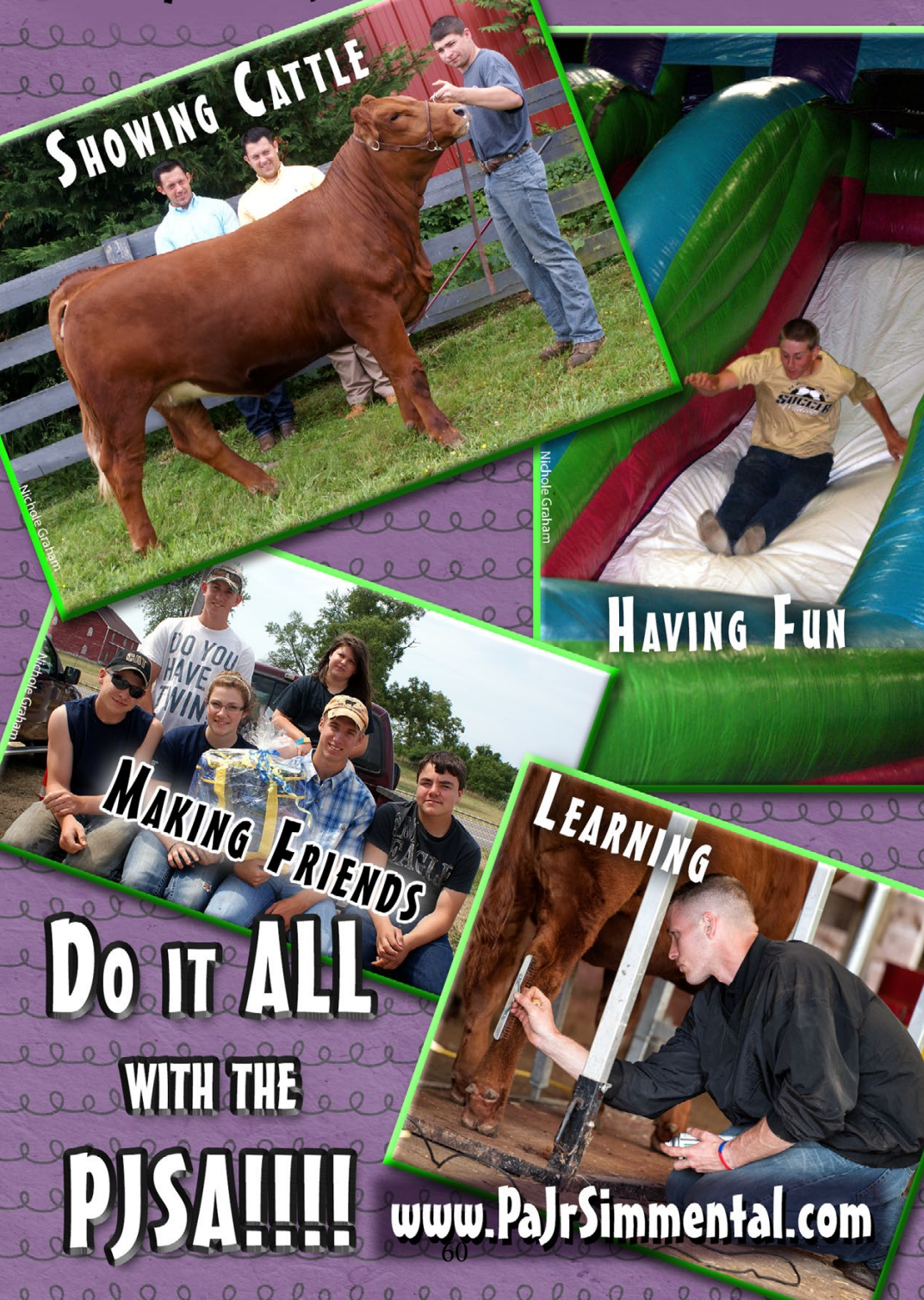
**Meiler, Charles Peter**.....(717) 292-1515  
2010 Conewago Road, Dover, PA 17315

**Meiler, Eli**.....(717) 292-1515  
2010 Conewago Road, Dover, PA 17315

**Metzker, Hunter**.....(814) 832-2342  
5334 Clover Creek Road, Williamsburg, PA 16693  
E-mail: wesmetzker@yahoo.com



# Pennsylvania Junior Simmental Association



## Pennsylvania Junior Simmental Association Members

(CONTINUED)

**Metzker, Keller** .....(814) 832-2342  
5334 Clover Creek Road, Williamsburg, PA 16693  
E-mail: wesmetzker@yahoo.com

**Miller, Heather** .....  
1040 Powells Valley Road, Halifax, PA 17032  
E-mail: cowhorse92@comcast.net

**Poliskiewicz, Julie** .....(610) 498-2816  
5552 Berry Hollow Road, Bangor, PA 18013  
E-mail: mamehas@msn.com

**Sommer, Jordan** .....(717) 382-1320  
2370 New Park Road, New Park, PA 17352  
E-mail: SommerJT6551@delval.edu

**Snyder, Nathan** .....(717) 968-0740  
12135 Pine Street, Felton, PA 17322  
E-mail: Natebait99@gmail.com

**Weir, Elizabeth** .....(717) 266-2530  
1175 Jerusalem School Road, Mt. Wolf, PA 17347  
E-mail: Simmieland@netzero.com

**Whipkey, Wyatt** .....(724) 499-5859  
186 Tara Hill Road, Holbrook, PA 15341  
E-mail: katrina.whipkey@yahoo.com

**Wolfgang, Lana** .....(717) 991-5812  
704 Breezewood Drive, Mechanicsburg, PA 17055  
E-mail: LanarWolfgang@gmail.com



### Bronze Merit Award

Pennsylvania Junior Simmental Association member Jordan Sommer received the Bronze Merit Award at the 2014 Pennsylvania Simmental Association's annual Awards Banquet!

Left: PSA President Laurie Meyers presenting award to Jordan Sommer.



**Red and  
Black Quality  
Simmental  
Cattle**

## For Sale

- Heifers
- Bulls
- Steers
- Donkeys
- Sim x Red  
Angus



- Certified and Accredited Herd
- Members of the Beef Quality Assurance Program
- ASA Total Herd Enrollment (THE) Members
- All heifers are Calf hood Vaccinated

# Frosty Springs Farm

James and Billie Cowell  
1214 Garards Fort Road  
Waynesburg, PA 15370

Tele: 724-627-8271 Jim Cell: 724-986-8502 Billie Cell: 724-998-4355

Email: frostyspringsfarm@wildblue.net

Website: www.frostyspringsfarm.com

## CAM CATTLE CO.

Chris and Alissa Mytar

111 Palomino Place

Charles Town, WV 25414

Tele: 217-741-8892

Email: amc6121@hotmail.com

Cattle can be viewed at Frosty Springs Farm.

# Simme Valley

**Producing Stylish  
Predictable  
Simmental Cattle  
that perform in and  
out of the show ring**



**Simme Valley Zipper – 9-11-12**

**JF Milestone x CLO Sweet Sensation (War Diva)**

**Illinois State Fair Senior Calf Champion**

**Dam is being flushed in coop with Hudson Pines Farm**

Show cattle & breeding stock for sale at all times. Bull calves & show steers available through the summer. We strive for Satisfied Customers. Our cattle work for us and their new owners, performing on grass in the summer and hay in the winter.

Watch for our consignments to the  
Gettysburg Stars & Stripes Sale on the 1<sup>st</sup> Sat in May

**Jeanne White, Owner**

Phil Paradis, Herdsman

Groton, NY 13073-9430

607-423-4888 cell

Jeanne@SimmeValley.com

www.SimmeValley.com

**Visitors Always Welcome**

Simme Valley Macho As U  
semen available \$20/unit

ASA member #8945 Certified BQA





# MVS MAXIMUS T-6

2009 NATIONAL CHAMPION SIMMENTAL BULL

ASA # 2371205

HETEROZYGOUS BLACK / HOMOZYGOUS POLLED

106 REGISTERED PUREBRED AND 32 REGISTERED COMMERCIAL CALVES  
ASA CARCASS MERIT PROGRAM ENROLLED

SPRING 2014 EPD'S

CE	BW	WW	YW	MCE	MM	MWW	STAY	API	TI
9.8	1.7	69.1	108.3	11.2	29.5	64.1	21.8	138	77.1

HIGH CALVING EASE – LOW BIRTHWEIGHT – RAPID CALF GROWTH  
TOP 12% FOR ALL- PURPOSE INDEX, TERMINAL INDEX AND MATERNAL MILK.  
TOP 15% FOR YEARLING WT. TOP 10% FOR MATERNAL WEANING WT.



MAXIMUS SEMEN & CALVES AVAILABLE.

DAUGHTERS, SONS, GRANDDAUGHTERS AND GREAT – GRAND  
CALVES ARE ON THE FARM FOR INSPECTION AND SALE

ALSO A/I BREEDING WITH:  
CLO CAPTAIN AMERICA 704Y  
MR. NLC UPGRADE U8676  
SVF/NJC BUILT RIGHT N48  
WS BEEF MAKER R13  
WS HOT BEEF X38

SEVENTH ANNUAL  
GETTYSBURG STARS AND  
STRIPES SALE  
AT THE FARM  
SATURDAY, MAY 3, 2014

MOUNTAIN VIEW SIMMENTALS INC.  
AT MOUNTAIN VIEW FARM,  
TOM AND BARBARA VOSSLER, GETTYSBURG PA  
717-337-1615 / 717-752-6823

## SHOEMAKER'S SIMMENTALS

2006 PA Farm Show Premier Breeder and Exhibitor



Shoemaker's Real Deal

2006 PA Farm Show Grand Champion Bull

Shoemaker's Miss Marker

STF Mr Momentum H508

Herd Sire - Shoemaker's Commander



Commander Offspring Offer Excellence in the Show Ring



Shoemaker's Lady Precept

2006 PA Farm Show  
Grand Champion Simmental Heifer



Shoemaker's Salome

2006 PA Farm Show - Junior Show  
Reserve Champion Simmental Heifer

Commander Offspring Also Offer Superior Performance

2003-2004 Pennsylvania Bull Test  
2nd Highest Indexing Bull  
3 of The Top 6 Highest Indexing Bulls

2005-2006 Pennsylvania Bull Test  
2nd Highest Indexing Bull  
3 of The Top 5 Highest Indexing Bulls

William Shoemaker

3839 Milligans Cove Road • Manns Choice, PA 15550  
Telephone: (814) 624-0667 Cell: (412) 721-8814

Email: shoesim@yahoo.com

# Campbell Show Calves



**FELT Gotta Getcha Some 30X**  
Reserve Simmental female  
2011 NWSS, Supreme female  
2011 Illinois State Fair.



**Junks Sweetness**  
A full sister to She's So Sweet.

**All females will have  
embryos for sale to  
Steel Force,  
HOC Broker, and  
Shocking Dream**



**CSCX Obsessed 481Y**  
2012 Ohio State Fair Champion  
Simmental Female  
2013 PA Farm Show Champion  
Simmental Female

*Campbell Show Calves*

**James, Jackie, Kevin and Sara Campbell**  
928 WW Railroad Road, Sycamore, PA 15364  
Home 724-852-1622 • Cell 724-263-0955  
email: [cscfarm@yahoo.com](mailto:cscfarm@yahoo.com)  
[www.showsteers.com/CampbellShowcalves](http://www.showsteers.com/CampbellShowcalves)

*New Home of JJ Black Obsession!!!*