

Pennsylvania Simmental Association

2012 MEMBERSHIP DIRECTORY



Feight's Farm

Purebred & Percentage Simmentals
Maine Anjou & MaineTainers

Feight's Sammie Q
2011 Grand Champion Female
Jr Show



Feight's Sammie & Feight's Bo Peep
MaineTainer
2012 Grand Champion Cow/Calf Pair



2011
ASA Performance



Feight's Bella Star
2011 Res Champion Female
Jr Show



Breeder Of:

2011 Second High Selling Bull VA Beef Expo
2011 Second High Indexing Bull PA Bull Test
2007, 08 Supreme Champion Female Bedford County Fair
2006, 08, 09 Rate of Gain Winner Bedford County Fair

Feight's Farm

480 E. Graceville Rd
Breezewood, PA 15533
Feightsfarm@yahoo.com

Bradley Feight
Fitting & Clipping Services
C: (814) 502-8973
Feibra60@pct.edu

Jeff & Sherry Feight
H: (814) 735-3797
C: (814) 502-8971
C: (814) 502-8972

MF MISS BUILT RIGHT X415 - "OLIVE"
GRAND CHAMPION FEMALE 2012 PA FARM SHOW



From orphaned calf at 4 mos. old when her dam was killed by lightning to Farm Show Champion.
We are so proud of this female and all she represents.

MESSICK FARMS

MYLIN, JOE, SALLY, CAITLIN
2835 SCHOOLHOUSE ROAD, MIDDLETOWN, PA 17057
(717) 985-1021
MESSICK85@COMCAST.NET



Simmental ...

Today's Simmental on Cutting Edge

From the American Simmental Association

Bozeman, Montana

In 1968, a group of maverick cattlemen met to form the American Simmental Association. They weren't mavericks because they wanted to produce Simmental genetics, they were different because they decided to use performance records and other technologies as everyday tools for cattle and beef improvement.

As a result of their focus on performance, the first beef breed sire summary was published in 1971. This initial summary contained information on a grand total of 11 Simmental bulls! Today, millions of records are analyzed for each Simmental Sire Summary and almost 100,000 sires have records in the database.

European Simmental breeders had incorporated performance traits unique to most world cattle genetics. Few breeds could offer the combination of early puberty, growth rate, muscularity, milk production and gentle disposition found in the Simmental imports of the 1970s. When combined with America's existing Brahman and British-influenced commercial cows, farmers and ranchers had finally discovered a crossbreeding combination that optimized feeder cattle production, and offered the opportunity for great crossbred replacement heifers.

Simmental were so popular by the early 1980s, many commercial herds had become high percentage Simmental. These cattle had similar characteristics to European Simmental and thrived in high nutrition environments; however, in several areas of the U.S., it was becoming apparent that Simmental genetics needed more calving ease, less frame size and more carcass quality.

The members of the American Simmental Association responded to the call for improving these traits. Since 1984, ASA's database genetic trend proves today's Simmental sires offer greatly improved calving ease. There are numerous bulls listed in the ASA Sire Summary with high accuracy progeny proofs for exceptional direct and maternal calving ease. Now, by selecting for high calving ease EPDs, many commercial herds can safely use Simmental bulls on their heifers and cows.

Using a planned crossbreeding system, Simmental cross females are valuable replacements. Besides being among the easiest calving heifers in the business, Simmental frame scores have been dramatically decreased. The most popular Simmental bulls in the U.S. averaged frame score 6.4 in 2002 compared to a 9 in 1986. In addition, these current bulls are all solid colored and polled.

Simmental ...

Today's Simmental on Cutting Edge (continued)

From the American Simmental Association

Bozeman, Montana

The biggest change in beef production in the 1990s was the intense emphasis on carcass value. Branded beef programs featured products with much better value consistency. Both leanness and meat quality are and will continue to be critical factors of carcass value. The American Simmental Association is the most aggressive continental breed association in performance testing sires for carcass value.

Every bull in the ASA 2005 Sire Summary has carcass EPDs. Each year the ASA tests over 100 young sires for carcass value. In 1999, more than 2,000 carcasses from this program produced these averages: carcass wt. 782, fat thickness 0.41, REA 13.0, USDA Choice 69%, and less than 1% USDA Standard, dark cutters or heavy weight discounts. The ASA also lists the only Tenderness EPDs in the beef industry for most of the popular sires.

The breeders of the American and Pennsylvania Simmental Associations have taken a great breed and made it better. Where else can you find early puberty, great growth, continental breed muscle and easy dispositions tied to a database that identifies calving ease, moderated frame and the best marbling genetics among high growth cattle? Visit our website www.simmental.org or write for a free sire summary:

AMERICAN Simmental ASSOCIATION

**1 Simmental Way
Bozeman, Montana 59718**

Telephone: (406) 587-4531

Fax: (406) 587-9301

E-mail: simmental@simmgene.com

Website: www.simmental.org

Calving ease. Carcass. Cows.

It starts with a live calf

Calving Ease

That's where Select Sires starts — with high quality semen from the best genetics with a strong emphasis on calving ease and low birth weight. We're proud that we are the leader in heifer AI and are home to some of the greatest calving ease sires in history. We want your calving season to be one that you'll remember with a smile on your face.



Carcass

In the beef business today, selling for more value is vital. Select Sires leads the AI industry with bulls that are leaders for end-product value. We back up these bulls with ample data — we want you, our customer, to know that our bulls deliver as promised. With the longest-running young sire sampling program in the business, our goal is to generate progeny data early in a bulls' life — so that you have more confidence in not only the bull, but in our program.



Cows

The cow has to do four things well — she needs to calve, milk, raise a calf and she has to re-breed. She needs to be able to do these things over a period of years and she needs to be one that you like — she is the one you live with. Longevity, structure, capacity, udder quality, disposition — all qualities that you want in your cows — and you want them to look good while doing their job. Select Sires is dedicated to providing genetics on the best cowmaker bulls in the industry — bulls whose daughters make them famous.



Calving ease. Carcass. Cows.

Steve Furrow • Beef Specialist 540-520-4804
Rocky Mount, VA • phone: 800-423-7473

email: office@selectsirepower.com
www.selectsirepower.com



Producing Stylish
Predictable
Simmental Cattle
that perform in and
out of the show ring



SS Nadine - Donor Cow ASA #2197697

Joker x SVF Breath Taker J130

B&B Miss Power Lass K1 – Donor Cow ASA #2061986

Power Stroke x TJF Tom Girl H52 (Queenie 34C daughter)

EBS Savannah Gina – Donor Cow ASA #2332309

ES Kilowat KH19 x TripleC SheSavannah K137

B&B Miss Power Lass & Nadine have been flushed in co-op with Hudson Pines Farm

Show cattle & breeding stock for sale at all times. Bull calves & show steers available through the summer. We strive for Satisfied Customers. Our cattle work for us and their new owners, performing on grass in the summer and hay in the winter. Watch for our consignments to the Gettysburg Stars & Stripes Sale on the 1st Sat in May, and also the Pa. Fall Classic Sale in October.

Ken & Jeanne White

Groton, NY 13073-9430

607-423-4888 cell

Jeanne@SimmeValley.com

www.SimmeValley.com

Visitors Always Welcome

Simme Valley Macho As U
semen available \$20/unit

5 ASA member #8945 Certified BQA



A Message from the President of the Pennsylvania Simmental Association

Dear Simmental Friends,

2012 is an exciting time for Simmental breeders in Pennsylvania and across the country. Commercial cattlemen have realized the value that Simmental genetics add to their herds, and never has the demand been greater for Simmental and Simmental influenced cattle. It is our responsibility as Simmental seedstock breeders to produce trouble-free cattle that offer calving ease, growth, and strong maternal and carcass traits.

Looking back on 2011, our membership has had many outstanding accomplishments. Our Pennsylvania bred cattle are very well received at many national level shows and sales.

Here in Pennsylvania, we have shows and sales we can be proud of. Our two largest shows are Keystone International Livestock Expo (KILE) in October, and Pennsylvania Farm Show in January. KILE's new highlights include a very well attended Simmental Percentage show in its third year, and the Keystone Heifer Showcase Sale in its second year. This All Breeds sale looks to be an excellent way of marketing fancy heifers. Another outstanding source of Simmental genetics is the Gettysburg Stars & Stripes Sale held near Gettysburg, PA, in May. Our two Pennsylvania Simmental Association sponsored sales – the PA Beef Expo Simmental Sale in March, and the PA Fall Classic Simmental Sale in October at Waynesburg, PA, have never been stronger, and set new high-sale averages in 2011. We rely upon long-term consignors and new consignors to keep our sales strong and fresh. Even if you have never sold cattle in a breed sale before, now is the time to try something new! Contact any director, or me, for consignment and sale details.

I want to take this opportunity to wish Vicki Varner and Ginger Woolcock a happy retirement from their positions of secretary and treasurer of the Pennsylvania Simmental Association. Their many years of dedicated service have made our association stronger – and definitely more organized!

On behalf of this organization, I would like to welcome all cattlemen interested in Simmental genetics to join the Pennsylvania Simmental Association. We invite everyone – whether you own one purebred Simmental cow, or a Simmental-influenced herd of five hundred – to bring new ideas and fresh perspectives to our organization.

Sincerely,
Laurie Fantom

Table of Contents

Simmental History	2-3
President's Message	6
Table of Contents	7
Index to Advertisers	7
PSA Officers and Directors	8, 38
Upcoming Events	9
PSA Membership Listing–By Last Name	13-38
2012 PSA Award Recipients	25, 37
PSA Application for Membership	39
PSA Membership Listing–Cross-Referenced by Farm Name	40-41
PJSA Officers	42, 55
Frame Score Chart.....	43
Gestation Table.....	44
Map and Index of Member Farm Locations	48-49
Rules and By-Laws.....	50-52
PJSA Application for Membership.....	55
PJSA Membership Listing.....	57-61

Index to Advertisers

Agri-Trac, Inc.....	42	Messick Farms	Ins. Front
Allegheny Meadows	15	Mountain View Simmental, Inc. ..	64
American Simmental Association...	3	Pennfield Feeds	10
CAM Cattle Company	12	Penn State University.....	58
Double RD Farm.....	11	Porter's Lake Simmental Ranch ..	29
Eastern States Livestock Systems	63	Powell's Valley Simmentals....	32-33
E&R Farms	31	Precision Diagnostics.....	10
EDJE	47	Select Sires.....	4
Elk County Simmentals	15	Serenity Hills Farm.....	46
EMM Sales & Service	17	Shoemaker's Simmentals.. Ins. Back	
Feight's Farm	1	Simme Valley Ranch.....	5
Frosty Springs Farm.....	12	Stein-Way Equipment	60
Gallagher Printing.....	45	Stewart's Simmental Cattle.....	35
Genex	21	Stony Creek Simmentals.....	31
Hudson Pines	Back Cover	SVJ Cattle Co./D&D Cattle Co. ..	23
Keystone Cattle Service.....	27	Woodview Simmental Farm.....	21
Ladybug Farm.....	15	Woolcock Farms	19
Lazy H Farm	53	Zimmerman's Custom Freezing...	31

Our special thanks to these advertisers for making this directory possible.

Please visit the PSA website, www.pasimmental.com

Pennsylvania Simmental Association

Officers

Laurie Fantom, President

470 Million Dollar Road
Halifax, PA 17032
Telephone: (717) 350-2516
E-mail: Laurie@pvsimm.com

Greg Stewart, Vice President

2016 Armstrong Valley Road
Halifax, PA 17032
Telephone: (717) 350-5235
E-mail: wgjstewart@hotmail.com

Nichole Graham, Secretary

13820 Wolf Road
Felton, PA 17322
Telephone: (717) 968-3643
E-mail: niklenvalley@aol.com

Patty Kuharic, Treasurer

1351 Oberlin Road
Middletown, PA 17057
Telephone: (717) 944-6745
E-mail: pattykuharic@aol.com

Directors

Rhonda Arndt

441 Hillside Drive
Middleburg, PA 17842
(570) 847-9844
farmchic3@hotmail.com

Annie Duncan

470 Million Dollar Road
Halifax, PA 17032
(717) 350-2515
simmtalker@yahoo.com

Laurie Fantom

470 Million Dollar Road
Halifax, PA 17032
(717) 350-2516
Laurie@pvsimm.com

Bradley Feight

480 East Graceville Road
Breezewood, PA 15533
(814) 502-8973
feibra60@pct.edu

Galen Graham

13820 Wolf Road
Felton, PA 17322
(717) 968-3643
niklenvalley@aol.com

Joe Messick

2835 Schoolhouse Road
Middletown, PA 17057
(717) 944-3500
messick85@comcast.net

William Shoemaker

3839 Milligans Cove Rd
Manns Choice, PA 15550
(814) 624-0667
shoesim@yahoo.com

William T. Vossler

665 Knoxlyn Road
Gettysburg, PA 17325
(717) 337-1615
tvossler@comcast.net

Greg Stewart

2016 Armstrong Vly. Rd.
Halifax, PA 17032
(717) 350-5235
wgjstewart@hotmail.com

Les Whitmoyer

1045 Pine Grove Road
Fredericksburg, PA 17026
(717) 865-2245
lwhitmoyer@hotmail.com

Levi Graham (Jr Rep)

13820 Wolf Road
Felton, PA 17322
(717) 968-3643
niklenvalley@aol.com

Julie Poliskiewicz (Jr Rep)

5552 Berry Hollow Road
Bangor, PA 18013
(610) 498-2816
xjpoliskiewiczxx@hotmail.com

Term Expiring 2012

Annie Duncan
Galen Graham
Greg Stewart

Term Expiring 2013

Rhonda Arndt
Joe Messick
William Shoemaker
Les Whitmoyer

Term Expiring 2014

Laurie Fantom
Bradley Feight
William T. Vossler



Upcoming Events



Pennsylvania Beef Expo/Bull Test

March 29-30, 2012

State College, PA
Simmental Female Sale
Performance-Tested Bull Sale

AJSA Eastern Regional Classic

June 26-30, 2012

Hattiesburg, MS

AJSA National Classic

July 7-13, 2012

Lima, OH

Simmental Breeder's Sweepstakes

July 24-30, 2012

Louisville, KY

Ag Progress Days

August 14-16, 2012

Rock Springs, PA

Keystone International Livestock Exposition

September 29-October 7, 2012

Harrisburg, PA
Open Show, Junior Show,
Junior Steers

Delaware Livestock Exposition

October 13-14, 2012

Delaware State Fair Grounds
Harrington, DE

Pennsylvania Fall Classic Sale

Friday, October 26, 2012

Preview of Sale Cattle

Saturday, October 27, 2012

Simmental Sale

American Royal Stock Show

October 24-November 4, 2012

Kansas City, MO

North American International Livestock Exposition

November 3-16, 2012

Louisville, KY

National Western Show and Sale

January 12-27, 2013

2013 The One Simmental Sale

ASA Annual Meeting

Denver, CO

2013 Pennsylvania State Farm Show

January 5-12, 2013

Harrisburg, PA

PRECISION DIAGNOSTICS LLC
245 WHITE OAK RD NEW HOLLAND PA 17557
Specializing in Reproductive Management

28 DAY BLOOD PREGNANCY TEST

- *Bio-secure
- *Accurate
- *Inexpensive - \$2.65/sample
- *Less Invasive
- *Safe for Embryos
- *Rapid Results

Call for Blood Sampling Kit!
717-354-2178
www.precisiond.com

bioPRYN[®]



Box 4366 • Lancaster, PA 17604

- Pennfield Feeds provides **Top Quality Feed** to meet your specific needs.
- The ratio is **Always Consistent**.
- **Pennfield's Service** is rated **Excellent** by its customers.
- **Pennfield Delivers** directly to your farm in a timely manner.

call Customer Service: 800-732-0467
to speak with a local representative today!

WANTED PASTURE PHOTOS

Please send your pictures of Pennsylvania pasture scenes featuring Simmental-influenced cattle to the email address below, to be considered for use on the cover of the PSA's Membership Directory!

**Prefer original files of vertically oriented images with a minimum size of 2400 pixels on the long side.*

Annie Duncan simmtalker@yahoo.com 717-350-2515



Registered Simmentals



**DOUBLE RD
FARM**
AND LIVESTOCK

10 Town Farm Road, Dudley, MA 01571

Ron & Rhonda
Dziembowski

Phone: 508-943-6508
Cell: 508-868-8836

**Red and
Black Quality
Simmental
Cattle**

FSF



For Sale

- Bulls
- Heifers
- Steers
- Donkeys
- Sim x Red Angus

- Certified and Accredited Herd
- Members of the Beef Quality Assurance Program
- ASA Total Herd Enrollment (THE) Members
- All heifers are Calthood Vaccinated

Frosty Springs Farm

James and Billie Cowell
1214 Garards Fort Road
Waynesburg, PA 15370

Tele: 724-627-8271 Jim Cell: 724-986-8502 Billie Cell: 724-998-4355
Email: frostyspringsfarm@wildblue.net

Introducing: **CAM CATTLE CO.**



Chris and Alissa Mytar

111 Palomino Place
Charles Town, WV 25414

Tele: 217-741-8892
Email: amc6121@hotmail.com

Cattle can be viewed at Frosty Springs Farm. First Purchase STF Ebullient XL64.

Pennsylvania Simmental Association Membership Listing

Arndt, Michael and Rhonda Cell: (570) 847-9844

Ste-Wan Farms
441 Hillside Drive, Middleburg, PA 17842
Snyder County
E-mail: farmchic3@hotmail.com

Baskin, Harvey E. and Dena (860) 923-9277

Wanna-B-Rich Farm Fax: (860) 923-9277
Cow / Calf Producer – Show Prospects
131 Hagstrom Road, Woodstock, CT 06281
Windham County
E-mail: harv_bask@att.net
14 miles south of Massachusetts Turnpike.

Bayler, John and Rita (717) 865-4420

Double "B" Venture
P.O. Box 74, Jonestown, PA 17038
Lebanon County

Benner, Fred, Kim, Ellie, and Emily Fred: (717) 320-2303

Serenity Hills Farm Kim: (717) 994-2540
429 Happy Hollow Road, Mifflintown, PA 17059
Juniata County
E-mail: fbenner@embarqmail.com
From US 322, PA 35 North at Mifflintown Exit, 1.5 miles.

Bishop, Kevin W. (856) 358-3923

16 Pine Tavern Road, Elmer, NJ 08318
Salem County

Bomgardner, Gregory and Katie (717) 838-2564

Bummy's Hummies
25 Black Walnut Lane, Annville, PA 17003
Lebanon County

Bosley, Jim and Betty (304) 530-6636

Buena Vista Simmentals Cell: (304) 257-3093
P.O. Box 5, Old Fields, WV 26845
Hardy County
E-mail: bvsimmentals@hardynet.com
4 miles north of Moorefield on Rt. 220, turn left on to Fish Pond Road. Physical address is 296 Fish Pond Road.

Browell, Michael and Corinna (814) 652-2150
 3792 Raystown Road, Hopewell, PA 16650
 Bedford County
 E-mail: cbrowell@gmail.com

Brown, Chris and Kellee, Mollee, Tyler, and Carter (304) 366-5353
Classic Farms
 430 Levels Road, Fairmont WV 26554
 Marion County
 E-mail: classicsim@aol.com
Located off I-79 exit 132 (5 miles).

Bullis, Larry and Judy (717) 334-6323
Belmont Steaks Farm Cell: (717) 515-4843
 202 Belmont Road, Gettysburg, PA 17325-8442
 Adams County
 E-mail: lnjbullis@comcast.net
From Gettysburg, approximately 3 miles west on Rt. 30, turn right on to Belmont Road, farm is 1/2 mile on left.

Campbell, James and Jackie (724) 852-1622
Campbell Show Calves Cell: (724) 263-0955
 928 W.W. Railroad Road, Sycamore, PA 15364
 Greene County
 E-mail: cscfarm@yahoo.com

Carlisle, David and Barbara (724) 587-0243
Carlisle Farm
 22 Mavor Lane, Avella, PA 15312
 Washington County

Casilio, Albert "Butch" and Denise (814) 965-5079
Elk County Simmentals Butch's Cell: (814) 335-4417
 1316 Water Street Ext., Johnsonburg, PA 15845 Denise's Cell: (814) 335-2434
 Elk County
 E-mail: jdestephano81@gmail.com
Six miles north of Ridgway on Route 948, bear right. Go to bottom of hill. Take right turn before bridge on Water Street Extension. Go 1-1/2 miles. Farm on left.

Chambers, Donald E. Jr. (814) 952-3670
Chambers Simmentals
 10687 Route 536, Punxsutawney, PA 15767
 Jefferson County
Call for directions.

Elk County Simmentals
"Top Quality Beef"

Butch Casilio
814-335-4417



Denise Casilio
814-335-2434

Fullblood Fleckvieh Simmentals
 1316 Water St. Ext. Johnsonburg, PA 15845



Ken & Mary Gumaer
716-735-7904
Cell: 716-830-8149

Black, Red & Traditional • AI Sired Since 1980

Simmental

Home of LBF Simmentals purebred performance cattle with show appeal.

See our bulls in the 2012 PA Bull Test Sale. Also, check our cattle at the Stars and Stripes Sale in Gettysburg, PA, May 5th, 2012, and PA Fall Classic in Waynesburg, PA, October 27th, 2012.

9335 Pearson Rd., Middleport, NY 14105

marygumaer@aol.com

Do YOU Have a Durable, Efficient Way to Do Your...

- ✓ Vaccinations
- ✓ Pregnancy Checks
- ✓ Artificial Insemination

- ✓ Embryo Transfers
- ✓ Deworming
- ✓ Ear Tagging



Pearson - Designed by Cattlemen for Cattlemen



★Chutes

★Tubs

★Alleys

★Headgates

Allegheny Meadows
 Joe & Doretta Speicher
 Manns Choice, PA

For a complete catalog go to...

814-733-2775

-

www.alleghenymeadows.com

Claus, Richard E. (860) 429-9500
Fenton River Farm
81 Daleville Road, Willington, CT 06279
Tolland County

Clepper, Paul E. (717) 960-0182
Norwin Simmental
180 Willow Grove Road, Carlisle, PA 17013
Cumberland County
E-mail: ypclep@hotmail.com

Cowell, Jim and Billie (724) 627-8271
Frosty Springs Farm Jim's Cell: (724) 986-8502
1214 Garards Fort Road, Waynesburg, PA 15370
Greene County Billie's Cell: (724) 998-4355
E-mail: frostyspringsfarm@wildblue.net
I-79 South, Kirby Exit, go left at stop sign 2 miles, at stop sign, turn left. Go another 2 miles.

Daum, Fred and Suzie (814) 354-2280
Hillside Acres
21969 Route 208, Tionesta, PA 16353
Clarion County

Dausch, Glenn (410) 893-7133
2113 Harkins Road, Pylesville, MD 21132 Cell: (410) 375-8057
Harford County
Email: glenn@DurableSteel.com

Dell, William and Betty Lou (717) 359-8283
Tri-J Farm Cell: (410) 977-5077
170 Mathias Road, Littlestown, PA 17340
Adams County
Take Route 97 two miles south of Littlestown, PA. Turn left on Mathias Road just before Mason-Dixon Line. First farm on left.

Downs, David, Annette, Sara, and Cody (724) 376-7195
194 Stock Farm Road, Jackson Center, PA 16133
Mercer County
E-mail: annettedowns@ymail.com

Druck, Philip L. and Carol (814) 628-4422
1099 Grimes Hill Road, Sabinsville, PA 16943
Tioga County
E-mail: phildruck@yahoo.com
North of Gaines on Rt. 349; from Rt. 6 approximately 6 miles to left on Grimes Hill Road.

Very High Caliber



....yet very affordable!

- Long lasting aluminum construction that resists corrosion.
- The industry's original fully riveted trailer which is stronger than a welded trailer.
- Superior full frame gate construction for reliable containment.
- Dense raised diamond plate tread floor for sure footing.
- Numerous gate and door options for convenience.
- Available from 16' to 32' for versatility
- Embossed side panels for greater strength.
- Top dollar at trade in time for best realized value.

CALL YOUR AUTHORIZED WILSON DEALER FOR MORE INFORMATION!

EMM
SALES & SERVICE, INC.

(800) 288-2081
www.emmsales.com
141 Zooks Mill Road
Brownstown, Pa 17508

Duncan, Annie
Powell's Valley Simmentals
 470 Million Dollar Road, Halifax, PA 17032
 Dauphin County
 E-mail: simmtalker@yahoo.com
 Web: www.pvsimm.com

(717) 350-2515

Dziembowski, Ron and Rhonda
Double RD Farm
 10 Town Farm Road, Dudley, MA 01571
 Worcester County
 Email: RLUVSANGUS@aol.com

(508) 868-8836

Fantom, Danny and Laurie
Powell's Valley Simmentals
 470 Million Dollar Road, Halifax, PA 17032
 Dauphin County
 E-mail: Laurie@pvsimm.com
 Web: www.pvsimm.com
From Harrisburg, Rt. 322 West, exit on Rt. 147 North. Rt. 147 North for 4 miles. Turn right on Million Dollar Road. First farm on right.

(717) 350-2516

Feight, Bradley
Feight's Farm
 480 E. Graceville Road, Breezewood, PA 15533
 Bedford County
 E-mail: feibra60@pct.edu

(814) 502-8973

Feight, Jeff and Sherry
Feight's Farm
 480 E. Graceville Road, Breezewood, PA 15533
 Bedford County
 Sherry's E-mail: JNSSimmentals@yahoo.com
 Jeff's E-mail: FEIGHTSFARM@yahoo.com

(814) 735-3797

Flagg, Bill and Karen
Warren Point
 2200 Ridge Road, Elverson, PA 19520
 Chester County
 E-mail: flagger@dejazzd.com

Home: (610) 469-1766
 Cell: (610) 656-5172

From Routet 100 take Route 23 west for approximately 3-1/2 miles to Knauertown, continue exactly 1 mile west to break in guard rail on left. From West, take 23 East past Warwick Furnace Road, turn right by pond.

Fry, David, Linda, Jonathan, Jennifer, and Katie
Fry's Beef Farm
 20389 Route 35 South, Mifflin, PA 17058
 Juniata County

(717) 436-9708

Woolcock farms



**"WF Romeo 2012 PA Farm Show
 Reserve Grand Champion Bull"**



**Full sibling WF Heartbreaker W1,
 the 2011 PA Farm Show Reserve
 Grand Champion Bull**

**Purebred and Crossbred Cattle for Breeding
 Stock and the Show Ring.**

Jerry & Ginger Woolcock
 38 Reese Road • Orangeville, PA 17859
 Telephone: (570) 458-5340 • gwoolcock@gmail.com

Glass, Frank and Susan (724) 599-4612
Woodview Simmental Farm
 1801 Grange Road, Blairsville, PA 15717
 Indiana County
 E-mail: sunnysue831@gmail.com
From Rt. 22 at Blairsville Exit take Rt. 217 North about 3 miles to Grange Road. Take left on Grange Road and go about 1 1/2 miles to farm.

Graham, Galen and Nichole Galen: (717) 968-3643
NikLen Valley Farm Nichole: (717) 968-6635
 13820 Wolf Road, Felton, PA 17322
 York County
 E-mail: niklenvalley@aol.com

Griffith, Earl and Brenda (301) 432-8911
Anvil Acres
 5912 Clevelandtown Road, Boonsboro, MD 21713
 Washington County
 Email: anvilacres1@yahoo.com
 Web: www.showcattlepage.com/anvilacres
Located in Washington County MD between Hagerstown and Frederick, MD.

Gromlich, Bruce (610) 562-5737
SASA Farms
 121 Schappell Road, Hamburg, PA 19526
 Berks County
 E-mail: sasafarm@copper.net
78-61 South, go 2 miles, turn left on Schappell Road, 2 1/2 miles, farm on right.

Gumaer, Ken and Mary (716) 735-7904
Ladybug Farm Cell: (716) 830-8149
 9335 Pearson Road, Middleport, NY 14105
 Niagara County
 E-mail: marygumaer@aol.com
From Rt. 31 North on Carmen Road, 1 1/2 miles left on Pearson Road; 1 mile on north side after Drum Road.

Harris, John and Vickie (814) 339-7752
Harris Farms
 1603 Bucket Line Road, Osceola Mills, PA 16666
 Clearfield County
 E-mail: obx.wmn@gmail.com
From red light in Osceola Mills, to up hill, follow road 1.2 miles, first farm on left.

Indiana County, PA

Home of one of the top
 Simmental Breeders
 And Club Calf
 Producers.

Woodview Simmental Farm

Frank and Susan Glass

1801 Grange Road
 Blairsville, PA 15717
 (724) 599-4612

E-mail: sunnysue831@gmail.com

Have cattle for sale???



**Advertise them on the
 Pennsylvania Simmental
 Association's website!**

All PSA and PJSA members
 may place classified
 advertisements on the "Sale
Barn" page of the PSA's
 website, for **FREE**.

To place your ad, please contact:

Greg Stewart
 Phone: 717-350-5235
 Email: wgjstewart@hotmail.com

Genex offers a great selection of bull power and the industry's best



SERVICE

For inquiries about semen
 or professional A.I. service
 contact **888.333.1783**



your **Profit** partner™

Genex Cooperative, Inc.

A subsidiary of Cooperative Resources International
 USA 888.333.1783 800.927.2855 CAN 888.354.4622 www.crinet.com

©2012 CRI A3053-012

Henthorn, Randall and Karen
Lazy H Farm
Adam Hall, Herdsman
 1149 Fisher Ridge Road, Fleming, OH 45729
 Washington County
 E-mail: lazyhsimmental@aol.com
 Web: www.lazyhfarm.net

(740) 678-8482
 Fax: (740) 749-0212
 (740) 336-8142

Herr, Jack
JEH Simmentals
 P.O. Box 101, 105 Maple Drive, Fredericksburg, PA 17026
 Lebanon County
 E-mail: jehsimm@aol.com

(717) 507-8342
 Fax: (717) 273-3751

Hook, Steve and Wanda
Ste-Wan Farms
 4751 New Berlin Highway, Middleburg, PA 17842
 Snyder County
 E-mail: stewanfarms@verizon.net

(570) 837-7020

Hoover, Ray E. and Donna
Codorus Furnace Farm
 645 Codorus Furnace Road, Mount Wolf, PA 17347
 York County

(717) 266-2649

Hughes, Larry
Triple L Farm
 818 Poplar Road, New Oxford, PA 17350
 Adams County
 Email: LLLfarm@live.com

(717) 624-4353

Kelley, John A. and Tricia
Kelley Farms
 1875 Glade Pike, Manns Choice, PA 15550
 Bedford County
30 West from Bedford to 31. Follow 31 west at flashing light in Manns Choice to Glade Pike Road. Go about 6 miles. First farm past the white church.

(814) 733-4705

Kershner, Karroll K.
Sugar Maple Properties
 234 Allendale Road, Shoemakersville, PA 19555
 Berks County

(610)-562-7151

Lay, William and Kathleen
Folly Farm
 2210 Old Joppa Road, Joppa, MD 21085
 Harford County
 E-mail: laykb@aol.com

(410) 679-0882
 Cell: (443) 307-7550

September
 3
 2012

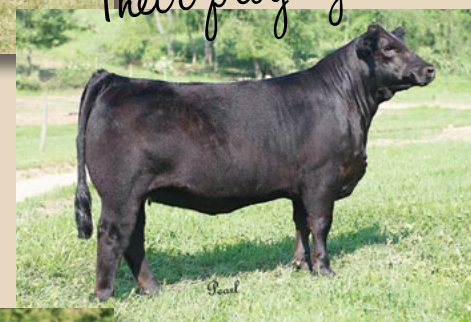
the Female Sale

AT EBY RANCH



TICES MISS ZANEY
S: HC POWER DRIVE 88H
D: IC ZIGGY L10

Their progeny sells!



SVJ LIGHT MY FIRE
S: GWS EBONYS
TRADEMARK 6N
D: TRIPLE C BURN IT
UP N34L



SVJ DSC SHEZA DANDY W71
S: GWS EBONYS
TRADEMARK 6N
D: WAR SHEZA DANDY M751

NWSS PREMIERE EXHIBITOR
2009 & 2010

We are excited to once again be joining forces with Eby Ranch, Emporia, KS, to bring you an outstanding set of females in our fall production sale - "The Female Sale." Stay tuned to www.svjfarm.com for updates on our offering and 2012 calf crop.



DUANE SNEE & VALERIE MANKEY
 724-554-0446 - 724-263-1725
 456 RINGLAND RIDGE ROAD
 AMITY, PA15311
VALARIEMANKEY@EARTHLINK.NET

Lenzner, John E. and Geraldine
Lenzner Farms
 619 Duff Road, Sewickley, PA 15143
 Allegheny County
 E-mail: johnlenzner@aol.com
79 North, Mt. Nebo Exit (3 miles from interstate) Duff Road.

(412) 741-2672
 Cell: (412) 780-0701

Limbert, Adam and Sarah
Limbert Livestock Co.
 119 Parallel Road, Pine Grove, PA 17963
 Schuylkill County
 E-mail: sarah13mac@hotmail.com

(570) 617-7620

Loht, Ken, Tina, Noah, Kaleb, and Kezia
KNT Beef Farm
 250 Road Apple Drive, McClure, PA 17841
 Mifflin County
 E-mail: kntbeef@pa.net

(717) 543-6185

Long, William and Yvonne Meadows
Long Meadows Simmentals
 23438 Earnest Road, Spartansburg, PA 16434
 Crawford County

(814) 654-7978

Lucariello, Steve and Barb
Back Road Ranch
 8105 Nettle Hill Road, Sherman, NY 14781
 Chautauqua County
 E-mail: backroadranch@fairpoint.net

(716) 761-3509

Mankey, Valerie, Justin and Duane Snee
SVJ Cattle Company/D&D Cattle Company
 465 Ringland Road, Amity, PA 15311
 Washington County
 E-mail: valeriemankey@earthlink.net
 Web: www.svjfarm.com

(724) 554-0446
 Cell: (724) 747-3511

McClure, C. Arnold and Linda
McClure Mills Farms
 16381 Pump Station Road, Shirleysburg, PA 17260-9735
 Huntingdon County
 E-mail: arnoldmcclure@gmail.com
1 mile north of Shirleysburg on Pump Station Road.

(814) 542-4748
 Cell: (814) 591-2125

PENNSYLVANIA SIMMENTAL ASSOCIATION



MEMBERS OF THE YEAR

The Pennsylvania Simmental Association honored the following outstanding members at the annual membership meeting and banquet held on Saturday, January 7, 2012.

JUNIOR MEMBER OF THE YEAR: EMILY BENNER



From left: Emily Benner, PSA President Greg Stewart.

SENIOR MEMBER OF THE YEAR: ANNIE DUNCAN



From left: Annie Duncan, PSA President Greg Stewart.

BREEDER OF THE YEAR: CAMPBELL SHOW CALVES



From left: Judge James Ligon, Agriculture Secretary George Greig, Sarah Campbell.

FAMILY OF THE YEAR: RON AND RHONDA DZIEMBOWSKI



From left: Rhonda Dziembowski, Ron Dziembowski.

Please join us at the next PA Simmental Association Banquet!

McMichael, Gene and Elvira (814) 623-7974
Stony Creek Simmentals Cell: (814) 310-1464
 3835 Milligans Cove Road, Manns Choice, PA 15550 Fax: (814) 623-7061
 Bedford County

E-mail: matadorjet@embarqmail.com

From the PA Turnpike (East), take the Bedford Exit. Then go 30 West to 31 West. It will turn into SR 96. Continue south and turn left at White Sulphur Springs Road. Farm is 2 miles on right. From the PA Turnpike (West), take the Somerset Exit. Then to 31 East to Bard. Turn right at Bard and then left at SR 96. Turn right at White Sulphur Springs Road. Farm is 2 miles on the right.

McLaughlin, Steve, Christine, Katie, and Jim (717) 447-0532
Gobbler's Knob Farm
 9771 Licking Creek Road, Mifflintown, PA 17059
 Juniata County
 E-mail: stevebigred2000@yahoo.com

Messick, Joe, Sally, and Mylin (717) 944-3500
Messick Farms Office: (717) 985-1021
Matt Blauch, Herdsman (717) 383-3558
 2835 Schoolhouse Road, Middletown, PA 17057
 Dauphin County
 E-mail: messick85@comcast.net
PA Turnpike, Exit 247 to Rt. 283E. 1 mile to 441/Airport Exit. Rt. 441 N to first farm.

Monroe, Tom and Cheryl (301) 293-3275
Highfields Farm
 11500 Meeting House Road, Myersville, MD 21773
 Frederick County
 E-mail: t3monroe@xecu.net

Mytar, Chris and Alissa (217) 741-8892
CAM Cattle Co.
 111 Palomino Place, Charles Town, WV 25414
 Jefferson County
 E-mail: amc6121@hotmail.com

Nice, Brent (717) 919-8449
 38 Pleasant View Road, Halifax, PA 17032
 Dauphin County
 E-mail: bfn5005@psu.edu



CLIFF & LYNN ORLEY

1486 Mt. Wilson Rd.
 Lebanon, PA 17042

(717) 964-2243

(717) 964-1862 Fax

(717) 269-0128 Cell

corley01@comcast.net

www.keystonecattleservices.com

- Custom Fitting for Show & Sale
- Herd Consultation
- Semen Sales
- Sale Advisor & Consultation
- Private Treaty Sales

PENNSYLVANIA SIMMENTAL ASSOCIATION

2013 Membership Directory Advertising

Advertising in the Pennsylvania Simmental Association's annual Membership Directory is a great way of marketing your farm or business directly to potential customers. PSA Directories are distributed at most major livestock events, Simmental shows and sales in Pennsylvania and surrounding states, including, but not limited to: Pennsylvania Beef Expo, PSU Cow Camp, Pennsylvania Cattlemen's Field Day, Ag Progress Days, Keystone International Livestock Exposition, Pennsylvania Fall Classic Sale, Pennsylvania Farm Show, and numerous county and 4-H fairs!

Advertisement Sizes and Rates

Ad deadline is January 31, 2013.

Must receive print-ready files by the deadline.

Now offering full bleed and color advertisements!

Ad Sizes

Full Page*.....5.5"W x 8.5"H
 Half Page..... 4.5"W x 3.75"H
 Quarter Page Horizontal..... 4.5"W x 1.87"H
 Quarter Page Vertical..... 1.87"W x 3.75"H
 *Allow ¼" extra for full bleed ads.

Ad Rates

Black and White

Full Page (Full Bleed)..... \$75.00
 Half Page..... \$50.00
 Quarter Page..... \$35.00

Color

Full Page (Full Bleed)..... \$150.00
 Half Page..... \$100.00
 Quarter Page..... \$70.00

If you are interested in advertising in the 2013 PSA Directory, please contact Les Whitmoyer.

Les Whitmoyer
 Phone: 717-865-2245

Thank you for your support.

Orley, Cliff and Lynn
CLO Simmentals
 1486 Mt. Wilson Road, Lebanon, PA 17042
 Lebanon County
 E-mail: corley01@comcast.net
 Web: www.keystonetcattleservices.com
South of Hershey on Rt. 117 to Colebrook, PA. East 1/3 mile on Mine Road, farm on right.

(717) 964-2243
 Cell: (717) 269-0128

Peck, Harold and Sally
HSP Farms
 154 Meadows Road, Lafayette, NJ 07848
 Sussex County
 E-mail: Harold@HSPfarms.com

Cell: (201) 213-2181

Poliskiewicz, Phil
 1706 Totts Gap Road, Bangor, PA 18013
 Northampton County

(570) 856-1455

Porter, Ralph and Cindy
Porter's Simmental Lake Ranch
 81 Porters Simmental Lane, Waverly, NY 14892
 Tioga County
 E-mail: portersimm@clarityconnect.com
 Web site: www.portersconcrete.com
Three miles east of Waverly off of Route 17C.

(607) 565-2452
 Cell: (607) 565-7283

Regula, Edward J. and Toni Gail
Cher-O-Kee Cattle Co.
Home of Denver Champion Lazy H Burn Right T26
 P.O. Box 125, Brownfield, PA 15416
 Fayette County
 E-mail: rags857@atlanticbb.net
One mile off of Route 40 (Uniontown) on Hopwood Fairchange Road.

(724) 439-4179
 Cell: (724) 322-1813

Ritchey, Scott and Deanna
Ritchey's Simmentals
 147 Hilltop Drive, New Enterprise, PA 16664
 Bedford County
 E-mail: nitro9@embarqmail.com

(814) 766-9967

Roberts, Bob
Double R Simmentals
 5498 Skyline Drive, Cambridge, OH 43725
 Guernsey County
 E-mail: broberts103@roadrunner.net
Exit 176 off of I-70.

(740) 435-0297

Porter's Simmental Lake Ranch



The Porter Family
 81 Porters Simmental Lane
 Waverly, NY 14892
 Phone: (607) 565-2452 Fax: (607) 565-8670
 E-mail: portersimm@clarityconnect.com
 Web site: www.portersconcrete.com



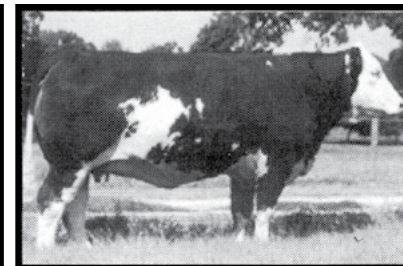
Full Fleckvieh

T2 Astrid F17



Astrid is a star in every sense of the word. Her pedigree includes the great Rachel cow family which has proved to be one of the most prolific producers of great females of any cow family in North America. She is one of our top donor cows.

Ms JMC Else G391



Else is a truly unique full Fleckvieh cow. She is an extremely long, thick, attractive, Holb daughter out of the great Luba cow. She is one of our top donor cows.

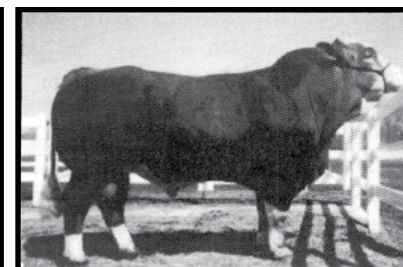
We have been fortunate to assemble a small group of quality full Fleckvieh bulls as well as excellent donor cows, some of which will be flushed for the first time this year. Calves out of our superior full Fleckvieh bulls, Hafke and Kaiser are weaning at astonishing rates.

Mr JMC Hafke F392



Hafke is the best bull Fleckvieh son alive in North America today. Here is an opportunity to buy semen out of a known son of "Hafke", the great German meat sire known for tremendous muscling.

Mr JMC Kaiser F302



Kaiser is a son out of Great Gums Karl 17C, and his dam is Adria 11A, one of the most powerful Fleckvieh cows in the breed today. He is dark red, double ring-eyed, with tremendous muscling from front to rear.

Semen \$25 a straw, 5-straw minimum
Call us today for information about embryos.

Rockefeller, David and Miranda Kaiser (914) 631-1154
Hudson Pines Farm
 180 Bedford Road, Pocantico Hills, Sleepy Hollow, NY 10591
 Westchester County
 E-mail: barn180@aol.com
 Website: www.hudsonpinesfarm.com

Rohm, Randy and Heather (724) 484-0316
Smoky Valley Farm
 1135 West Finley Road, West Finley, PA 15377
 Washington County
 E-mail: sv1Randy@hotmail.com

Runk, Randy (814) 542-2154
E&R Farms LP Cell: (814) 599-3377
 17299 Hill Valley Road, Shirleysburg, PA 17260
 Huntingdon County
 E-mail: randy.runk@gmail.com

Runkle, Sally Messick (717) 944-1707
Messick Farms
 180 Newberry Road, Middletown, PA 17057
 Dauphin County
 E-mail: srunkle180@yahoo.com

Schadel, Neal and Darlane (570) 682-8562
 144 Coleman Road, Hegins, PA 17938
 Schuylkill County
 E-mail: shaydell@wildblue.net
*Rt. 25; 8 miles west of Hegins. Turn right on Honeymoon Trail after Wenger Feed Mill;
 1/2 mile turn right onto Coleman Church Road. Farm on left after church.*

Scherich, Rodney and Donna Jean (724) 428-3555
Scherich's Simmental Farm
 325 Wheeling Creek Road, Windridge, PA 15380
 Greene County
 E-mail: sschersimm@windstream.net
From Waynesburg, take Route 21 West to Ryerson Station. Turn right on Wheeling Creek Road. Go one mile to first farm on left.

Shipman, Dave and Marilyn (724) 627-8903
Shipman's Simmentals
 134 Dillie Road, Sycamore, PA 15364
 Greene County
 E-mail: ship_simmd@windstream.net
*Ruff Creek Exit off Interstate 79. Take 221 N to 2nd left hand road. This will be Dillie.
 Farm is last residence on left.*

NO BULL TOO BIG OR NASTY

S
E
M
E
N



Semen Freezing since 1983

Semen Fertility Evaluations

S
E
M
E
N

ZIMMERMAN'S CUSTOM FREEZING

131 Redwell Rd., New Holland, PA 17557
 Phone: 717-355-2048 Cell: 717-940-1430
www.semenfreezing.com



Stony Creek Simmentals
 Gene & Elvira McMichael



Purebred Simmentals
Show Heifers & Bulls
Top AI Bulls Used

Our performance cattle
 give us great cows and
 predictable EPD's.

3835 Milligans Cove Rd
Manns Choice, PA 15550
(814) 623-7974

E-mail: matadorjet@embarqmail.com

E&R Farms, Inc
Pure Bred Simmental



Randy R. Runk
 Vice President
 & General Manager

17299 Hill Valley Road
 Shirleysburg, PA 17260
 (814) 542-2154



Show Ring Style!Pasture Performance!



PVSM Prince Ivan

2012 PA Farm Show Grand Champion Simmental Bull
and

2011 KILE Grand Champion Percentage Simmental Bull

SC Mo Magic S47 x PVSM Firebird • Born: 10-3-10
PVSM Prince Ivan is a homozygous black, homozygous polled,
3/4 Simmental, 1/4 Angus bull, who is consigned
to the VA Beef Expo, April 20th, 2012.



PVSM Master Misty

PVSM Master Misty
SS Ebonys Grandmaster
x TNC Misty Girl

- ✓ Winter Heifer Calf
Champion PA Farm Show
- ✓ Homozygous black
- ✓ Homozygous polled
- ✓ Consigned to VA Beef Expo,
April 20th, 2012



PVSM Pioneer

PVSM Pioneer • born 3-9-11 • 3/4 Simmental
TWCC Trendsetter T71 x PVSM Honeysuckle
2012 PA Farm Show Reserve Champion Bull Calf
Purchased by Cline's Farm, Clear Brook, VA



PVSM Freedoms Hope

THSF Freedom 300N x
PVSM Dawns Early Light

Hope calved
February 5, 2012,
with a "Fat Butt" heifer.
Watch for her this year!

2011 PA Farm Show Premier Breeder
2012 PA Farm Show Premier
Breeder & Exhibitor

POWELL'S VALLEY SIMMENTALS

*We produce gentle, functional cattle that perform as well
in the pasture as they do in the show ring.*

Danny and Laurie Fantom
470 Million Dollar Road, Halifax, Pa. 17032
717-350-2516
Email: Laurie@pvsimm.com

Stop in or call anytime--we love to talk cattle.
Please visit our website, www.pvsimm.com

Shoemaker, William E.
Shoemaker's Simmentals
 3839 Milligans Cove Road, Manns Choice, PA 15550
 Bedford County

(814) 624-0667
 Cell: (412) 721-8814

E-mail: shoesim@yahoo.com

From the PA Turnpike (East), take the Bedford Exit. Then go 30 West to 31 West. It will turn into SR 96. Continue south and turn left at White Sulphur Springs Road. Farm is 2 miles on left. From the PA Turnpike (West), the Somerset Exit. Then to 31 East to Bard. Turn right at Bard and then left at SR 96. Turn Right at White Sulphur Springs Road. Farm is 2 miles on the left.

Smithson, Ricky, Debbie, and Shane
Pond View Farm
 2531 Jolly Acres Road, White Hall, MD 21161
 Harford County
 E-mail: rsmithson@asplundh.com

(410) 692-0172
 Cell: (443) 463-4641

Snyder, Lee and Linda
Harvest Plantation
 153 Susquehanna Drive, Franklin, PA 16323
 Venango County

(814) 374-4684

E-mail: lsnyder1@zoominternet.net

Six miles west of Franklin on Route 322. Go one mile north on Route 427 then left on Blacktop Road, 1/2 mile on left.

Speicher, Joe, Doretta, Jamison, Winston, Laramie, and Ellyssa
Allegheny Meadows
 1996 Allegheny Road, Manns Choice, PA 15550
 Bedford County
 E-mail: joeanddoretta@juno.com
 Web: www.AlleghenyMeadows.com
8.1 miles west of Manns Choice on Route 31 West.

(814) 733-2775
 Cell: (814) 285-1541

Stewart, Greg and Sam
Stewart's Simmental Cattle
 2016 Armstrong Valley Road, Halifax, PA 17032
 Dauphin County
 E-mail: wgjstewart@hotmail.com

Greg: (717) 350-5235

Stough, Wayne and Brenda & Family
 5082 Bentz Road, Spring Grove, PA 17362
 York County
 E-mail: stoughcow@aol.com

(717) 225-6279

Route 116 to Spring Grove, pass Millpond turn left on Lehman. Go 0.8 miles. Turn right onto Myers Road. Go 1/2 mile, turn left onto Bentz Road. Go 0.7 miles to farm on right.

Check out our up and coming donor females!



**MF Miss Built Right U553
 "Beauty"**

SVF/NJC Built Right X
 MF Miss Crossfire R253

★ Flushes, embryos and progeny available out of this top donor

SSC Spicy 55X
 Dream On X Ebony's Trademark X
 Meyer 734

★ Due in March
 to Grandmaster

★ **She Sells**
 Saturday May 5th, 2012,
 at the Gettysburg Stars
 and Stripes



☛ Cattle for Sale at all times: Bulls, Cows, Heifers, and leading genetics.

Stewart's Simmental Cattle

Greg and Sam Stewart
 2016 Armstrong Valley Road • Halifax, PA 17032
 Greg (717) 350-5235 or Sam (814) 849-5526

Summey, Troy III and Emily
Circle S Acres and Stockyard Style
 503 Miller Road, Halifax, PA 17032
 Dauphin County
 E-mail: emily_summey@hotmail.com
 Web: www.stockyardstyle.com

(717) 644-3224

Taylor, Ronald, Kathi, and Bailey
White House Farm
 887 Hunlock Harveyville Road, Shickshinny, PA 18655
 Luzerne County
 E-mail: taylorfarm@msn.com
 10 miles off US Rt. 11, on St. Rt. 4016.

(570) 256-3482
 Cell: (570) 578-3086

Tice, Chip and Debbie
 2483 Helixville Road, Schellsburg, PA 15551
 Somerset County

(814) 599-3500

Varner, Gary L. and Vicki
Sorrell Acres Farm
 8436 Mountain Road, McAlisterville, PA 17049
 Juniata County
 E-mail: gvarner@centurylink.net

(717) 463-2513
 Gary's Cell: (717) 512-1891
 Vicki's Cell: (717) 724-7488

Vossler, William T. (Tom) and Barbara
Mountain View Farm
 665 Knoxlyn Road, Gettysburg, PA 17325
 Adams County
 E-mail: tvossler@comcast.net
 Web: www.mountainviewsimmentals.com
 From Rte 15 / Rt. 30 Interchange, take Rt. 30 West approximately 5 miles through and past Gettysburg. Left on Knoxlyn. 1.2 miles on Knoxlyn Road then right turn at Farm Road.

(717) 337-1615
 Cell: (717) 752-6823

Weir, Mark and Lisa
 1175 Jerusalem School Road, Mount Wolfe, PA 17347
 York County
 E-mail: weirland@netzero.com

(717) 266-2530

White, Kenneth and Jeanne
Simme Valley Ranch
 6493 Stauber Road, Groton, NY 13073
 Cayuga County
 E-mail: Jeanne@simmevalley.com
 Web: www.simmevalley.com
 Route 81, Exit 12. Right on 281, left on Rt. 90. Go 5.5 miles. Left on Salt Road. 2nd left on Stauber Road.

Cell: (607) 423-4888



Special Recognition

Special Recognition Awards were presented to Vicki Varner and Ginger Woolcock at the 2012 Pennsylvania Farm Show. In 2011, long-time secretary and treasurer Vicki Varner and Ginger Woolcock stepped down from service to the Pennsylvania Simmental Association. Their years of dedication and hard work are greatly appreciated!



Above, from left: Greg Stewart, Annie Duncan, Vicki Varner, PSA President Laurie Fantom.



Above, from left: Annie Duncan, Ginger Woolcock, Greg Stewart, PSA President Laurie Fantom.

Whitmoyer, Les & Cindy Zimmerman
Whitmoyer's Mountain View
 1045 Pine Grove Road, Fredericksburg, PA 17026
 Lebanon County
 E-mail: **lwhitmoyer@hotmail.com**
Rt. 78 East of Rt. 81 to Exit 6. Turn left on Pine Grove Road—1 mile to first farm on right after Blue Mountain Road.

(717) 865-2245
 Cell: (717) 673-4837

Woolcock, Jerry and Ginger
Woolcock Farms
 38 Reese Road, Orangeville, PA 17859
 Columbia County
 E-mail: **gwoolcock@gmail.com**
I-80, Exit 34, Route 42 North to Millville. At flashing light, take SR 254E 4.7 miles to Reese Road.



**Pennsylvania Simmental Association's
 2012 Board of Directors**

Standing, from left: Annie Duncan, Joe Messick, Galen Graham,
 Les Whitmoyer, Greg Stewart, William Shoemaker.
Seated, from left: Rhonda Arndt, William T. Vossler,
 Bradley Feight, Laurie Fantom.

Pennsylvania Simmental Association
Application for Membership
www.pasimmental.com

Member Name: _____

Farm Name: _____

Address: _____

City: _____ State: _____ Zip: _____

Telephone Number: (____) _____ County: _____

Directions to Farm: _____

E-mail: _____

Web Site: _____

I am willing to work on a committee. My preference is _____

\$35.00 Full Member _____

I agree to abide and be bound by the Constitution, By-Laws and regulations of the Pennsylvania Simmental Association, Inc.

Signature: _____ Date: _____

Send to:

Patty Kuharic
1351 Oberlin Road • Middletown, PA 17057
Phone: (717) 944-6745
E-mail: *pattykuharic@aol.com*

Membership Listing Cross-Referenced by Farm Name

Allegheny Meadows	Joe & Doretta Speicher	(814) 733-2775
.....	Jamison, Winston, Laramie, & Ellyssa Speicher	
Anvil Acres	Earl & Brenda Griffith	(301) 432-8911
Back Road Ranch.....	Steve & Barb Lucariello	(716) 761-3509
Belmont Steaks Farm	Larry & Judy Bullis	(717) 334-6323
Buena Vista Simmentals	Jim & Betty Bosley	(304) 530-6636
Bummy's Hummies	Gregory & Katie Bomgardner	(717) 838-2564
CAM Cattle Company	Chris & Alissa Mytar	(217) 741-8892
Campbell Show Calves.....	James & Jackie Campbell	(724) 852-1622
Carlisle Farm.....	David & Barbara Carlisle.....	(724) 587-0243
Chambers Simmentals	Donald E. Chambers, Jr.	(814) 952-3670
Cher-O-Kee Cattle Co.....	Edward J. & Toni Gail Regula	(724) 439-4179
Circle S Acres/Stockyard Style.....	Troy III & Emily Summey	(717) 644-3224
Classic Farms	Chris & Kellee Brown	(304) 366-5353
.....	Mollee, Tyler, & Carter Brown	
CLO Simmentals.....	Cliff & Lynn Orley	(717) 964-2243
Codorus Furnace Farm.....	Ray E. & Donna Hoover	(717) 266-2649
Double "B" Venture	John & Rita Bayler.....	(717) 865-4420
Double RD Farm.....	Ron & Rhonda Dziembowski	(508) 868-8836
Double R Simmentals	Bob Roberts	(740) 435-0297
E&R Farms	Randy Runk	(814) 542-2154
Elk County Simmentals	Albert & Denise Casilio	(814) 965-5079
Feight's Farm	Jeff & Sherry Feight	(814) 735-3797
.....	Bradley Feight	(814) 502-8973
Fenton River Farm	Richard E. Claus	(860) 429-9500
Folly Farm.....	William & Kathleen Lay	(410) 679-0882
Frosty Springs Farm.....	Jim & Billie Cowell	(724) 627-8271
Fry's Beef Farm	David, Linda, Jonathan, Jennifer, & Katie Fry	(717) 436-9708
Gobbler's Knob Farm	Steve, Christine, Katie, & Jim McLaughlin	(717) 447-0532
Harris Farms.....	John & Vickie Harris.....	(814) 339-7752
Harvest Plantation.....	Lee & Linda Snyder.....	(814) 374-4684
Highfields Farm	Tom & Cheryl Monroe.....	(301) 293-3275
Hillside Acres.....	Fred & Suzie Daum	(814) 354-2280
HSP Farms	Harold & Sally Peck	(201) 213-2181
Hudson Pines Farm.....	David Rockefeller, Owner	(914) 631-1154
.....	Miranda Kaiser, Executive Director/Owner	(914) 631-1154
.....	John Walston, General Manager	(518) 851-2000
.....	Ryan Haefner, Farm Manager	(815) 499-0522
JEH Simmentals.....	Jack Herr	(717) 507-8342
Kelley Farms.....	John A. & Tricia Kelley	(814) 733-4705
Keystone Cattle Service.....	Cliff & Lynn Orley.....	(717) 964-2243
KNT Beef Farm	Ken, Tina, Noah, Kaleb, & Kezia Loht.....	(717) 543-6185

Membership Listing Cross-Referenced by Farm Name

(Continued)

Ladybug Farm.....	Ken & Mary Gumaer	(716) 735-7904
Lazy H Farm	Randall & Karen Henthorn	(740) 678-8482
.....	Adam Hall, Herdsman	(740) 336-8142
Limbert Livestock Company	Adam & Sarah Limbert.....	(570) 617-7620
Lenzner Farms	John E. & Geraldine Lenzner.....	(412) 741-2672
Long Meadows Farm	William Long & Yvonne Meadows	(814) 654-7978
McClure Mills Farms.....	C. Arnold & Linda McClure	(814) 542-4748
Norwin Simmental	Paul E. Clepper	(717) 960-0182
Messick Farms	Joe & Mylin Messick.....	(717) 944-3500
.....	Sally Messick Runkle	(717) 944-1707
.....	Matt Blauch, Herdsman	(717) 383-3558
Mountain View Farm.....	William T. (Tom) & Barbara Vossler	(717) 337-1615
NikLen Valley Farm.....	Galen & Nichole Graham	(717) 968-3643
Pond View Farm.....	Ricky, Debbie, & Shane Smithson.....	(410) 692-0172
Porter's Simmental Lake Ranch	Ralph & Cindy Porter	(607) 565-2452
Powell's Valley Simmentals.....	Danny & Laurie Fantom	(717) 350-2516
.....	Annie Duncan	(717) 350-2515
Ritchey's Simmentals.....	Scott & Deanna Ritchey	(814) 766-9967
Scherich's Simmental Farm	Rodney & Donna Jean Scherich	(724) 428-3555
Serenity Hills Farm	Fred, Kim, Ellie, & Emily Benner	(717) 320-2303
SASA Farms.....	Bruce Gromlich.....	(610) 562-5737
Shipman's Simmentals	Dave & Marilyn Shipman	(724) 627-8903
Shoemaker's Simmentals.....	William E. Shoemaker	(814) 624-0667
Simme Valley Ranch	Kenneth & Jeanne White	(607) 423-4888
Smoky Valley Farm.....	Randy & Heather Rohm	(724) 484-0316
Sorrell Acres Farm	Gary L. & Vicki Varner.....	(717) 463-2513
Ste-Wan Farms.....	Steve & Wanda Hook	(570) 837-7020
.....	Michael & Rhonda Arndt.....	(570) 847-9844
Stewart's Simmental Cattle.....	Greg Stewart	(717) 350-5235
.....	Sam Stewart	(814) 849-5526
Stony Creek Simmentals.....	Gene & Elvira McMichael.....	(814) 623-7974
Sugar Maple Properties.....	Karoll K. Kershner.....	(610) 562-7151
SVJ/D&D Cattle Company.....	Valerie & Justin Mankey & Duane Snee	(724) 554-0446
Tri-J Farm	William & Betty Lou Dell	(717) 359-8283
Triple L Farm	Larry Hughes	(717) 624-4353
Wanna-B-Rich Farm	Harvey E. & Dena Baskin	(860) 923-9277
Warren Point	Bill & Karen Flagge.....	(610) 469-1766
White House Farm	Ronald, Kathi, & Bailey Taylor	(570) 256-3482
Whitmoyer's Mountain View.....	Les Whitmoyer & Cindy Zimmerman	(717) 865-2245
Woodview Simmental Farm.....	Frank & Susan Glass.....	(724) 599-4612
Woolcock Farms	Jerry & Ginger Woolcock	(570) 458-5340



WWW.AGRITRACTION.COM
1-877-966-3546

Traction Milling, Safety & Profitability Since 1997

Pennsylvania Junior Simmental Association
www.pajrsimmental.com



From left: PJSA Treasurer Emmett Fox,
 PJSA President/Queen Bridget Fox



**Meet the PJSA's
 officers and royalty!**



From left: PJSA Secretary/Princess Grace Graham,
 PJSA Vice President Emily Benner



FRAME SCORE CHART							
Bull Hip Height (Inches)							
Months of Age	Frame Score						
	3	4	5	6	7	8	9
5	37.5	39.5	41.6	43.6	45.6	47.7	49.7
6	38.8	40.8	42.9	44.9	46.9	48.9	51.0
7	40.0	42.1	44.1	46.1	48.1	50.1	51.2
8	41.2	43.2	45.2	47.2	49.3	51.3	53.3
9	42.3	44.3	46.3	48.3	50.3	52.3	54.3
10	43.3	45.3	47.3	49.3	51.3	53.3	55.3
11	44.2	46.2	48.2	50.2	52.2	54.2	56.2
12	45.0	47.0	49.0	51.0	53.0	55.0	57.0
13	45.8	47.8	49.8	51.8	53.8	55.8	57.7
14	46.5	48.5	50.4	52.4	54.4	56.4	58.4
15	47.1	49.1	51.1	53.0	55.0	57.0	59.0
16	47.6	49.6	51.6	53.6	55.6	57.5	59.5
18	48.5	50.5	52.4	54.4	56.4	58.4	60.3
20	49.1	51.0	53.0	55.0	56.9	58.9	60.9

Heifer Hip Height (Inches)							
Months Of Age	Frame Score						
	3	4	5	6	7	8	9
5	37.2	39.3	41.3	43.4	45.5	47.5	49.6
6	38.2	40.3	42.3	44.4	46.5	48.5	50.6
7	39.2	41.2	43.3	45.3	47.4	49.4	51.5
8	40.1	42.1	44.1	46.2	48.2	50.2	52.3
9	40.9	42.9	44.9	47.0	49.0	51.0	53.0
10	41.6	43.7	45.7	47.7	49.7	51.7	53.8
11	42.3	44.3	46.4	48.4	50.4	52.4	54.4
12	43.0	45.0	47.0	49.0	51.0	53.0	55.0
13	43.6	45.5	47.5	49.5	51.5	53.5	55.5
14	44.1	46.1	48.0	50.0	53.0	54.0	56.0
15	44.5	46.5	48.5	50.5	52.4	54.4	56.4
16	44.9	46.9	48.9	50.8	52.8	54.8	56.7
18	45.6	47.5	49.5	51.4	53.4	55.3	57.3
20	46.0	47.9	49.8	51.8	53.7	55.6	57.6

Simmental Gestation Table Based on 285 Days

JAN	OCT	FEB	NOV	MAR	DEC	APR	JAN	MAY	FEB	JUN	MAR	JUL	APR	AUG	MAY	SEP	JUN	OCT	JUL	NOV	AUG	DEC	SEP
1	13	1	13	1	11	1	11	1	10	1	13	1	12	1	13	1	13	1	13	1	13	1	12
2	14	2	14	2	12	2	12	2	11	2	14	2	13	2	14	2	14	2	14	2	14	2	13
3	15	3	15	3	13	3	13	3	12	3	15	3	14	3	15	3	15	3	15	3	15	3	14
4	16	4	16	4	14	4	14	4	13	4	16	4	15	4	16	4	16	4	16	4	16	4	15
5	17	5	17	5	15	5	15	5	14	5	17	5	16	5	17	5	17	5	17	5	17	5	16
6	18	6	18	6	16	6	16	6	15	6	18	6	17	6	18	6	18	6	18	6	18	6	17
7	19	7	19	7	17	7	17	7	16	7	19	7	18	7	19	7	19	7	19	7	19	7	18
8	20	8	20	8	18	8	18	8	17	8	20	8	19	8	20	8	20	8	20	8	20	8	19
9	21	9	21	9	19	9	19	9	18	9	21	9	20	9	21	9	21	9	21	9	21	9	20
10	22	10	22	10	20	10	20	10	19	10	22	10	21	10	22	10	22	10	22	10	22	10	21
11	23	11	23	11	21	11	21	11	20	11	23	11	22	11	23	11	23	11	23	11	23	11	22
12	24	12	24	12	22	12	22	12	21	12	24	12	23	12	24	12	24	12	24	12	24	12	23
13	25	13	25	13	23	13	23	13	22	13	25	13	24	13	25	13	25	13	25	13	25	13	24
14	26	14	26	14	24	14	24	14	23	14	26	14	25	14	26	14	26	14	26	14	26	14	25
15	27	15	27	15	25	15	25	15	24	15	27	15	26	15	27	15	27	15	27	15	27	15	26
16	28	16	28	16	26	16	26	16	25	16	28	16	27	16	28	16	28	16	28	16	28	16	27
17	29	17	29	17	27	17	27	17	26	17	29	17	28	17	29	17	29	17	29	17	29	17	28
18	30	18	30	18	28	18	28	18	27	18	30	18	29	18	30	18	30	18	30	18	30	18	29
19	31	19	31	19	29	19	29	19	28	19	31	19	30	19	31	19	31	19	31	19	31	19	30
20	1	20	2	20	30	20	30	20	1	20	1	20	1	20	1	20	1	20	1	20	1	20	1
21	2	21	3	21	31	21	31	21	2	21	2	21	2	21	2	21	2	21	2	21	2	21	2
22	3	22	4	22	1	22	1	22	3	22	3	22	3	22	3	22	3	22	3	22	3	22	3
23	4	23	5	23	2	23	2	23	4	23	4	23	4	23	4	23	4	23	4	23	4	23	4
24	5	24	6	24	3	24	3	24	5	24	5	24	5	24	5	24	5	24	5	24	5	24	5
25	6	25	7	25	4	25	4	25	6	25	6	25	6	25	6	25	6	25	6	25	6	25	6
26	7	26	8	26	5	26	5	26	7	26	7	26	7	26	7	26	7	26	7	26	7	26	7
27	8	27	9	27	6	27	6	27	8	27	8	27	8	27	8	27	8	27	8	27	8	27	8
28	9	28	10	28	7	28	7	28	9	28	9	28	9	28	9	28	9	28	9	28	9	28	9
29	10	29	11	29	8	29	8	29	10	29	10	29	10	29	10	29	10	29	10	29	10	29	10
30	11	30	12	30	9	30	9	30	11	30	11	30	11	30	11	30	11	30	11	30	11	30	11
31	12				10			31	12				12	31	12			31				31	12

Proudly serving Pennsylvania's Agriculture Communities since 1985.

- Sale Catalogs
- Directories
- Newsletters
- Banners
- Postcards
- Business Cards
- Sell Sheets
- Yard Signs

and many more creative ideas !



Design • Print • Mail • Wide Format



717.838.1527
Fax: 717.838.5715

601 W. Main Street
P.O. BOX 382
Palmyra, PA 17078



- 2012 PA Farm Show Jr. Show Reserve Grand Champion and Champion Bred & Owned
- She is an In Dew Time from our THSF Freedom donor cow, Peaches; a full sibling will be sold at PA Beef Expo on March 30.

SERENITY HILLS FARM

**Breeders of the Top Indexing
Simmental Bulls at the PA Bull Test
2007 and 2011**

We have a couple of bulls for sale this summer.

Stop by to visit us at the farm, we usually have heifers and bulls for sale

Fred, Kim, and Emily Benner
fbenner@embarqmail.com

717-320-2303

429 Happy Hollow Road
Mifflintown, PA

Benners Miss Macho X2

2012 PA Farm Show
Open Division Reserve
Grand Champion Female



EDJE

technologies

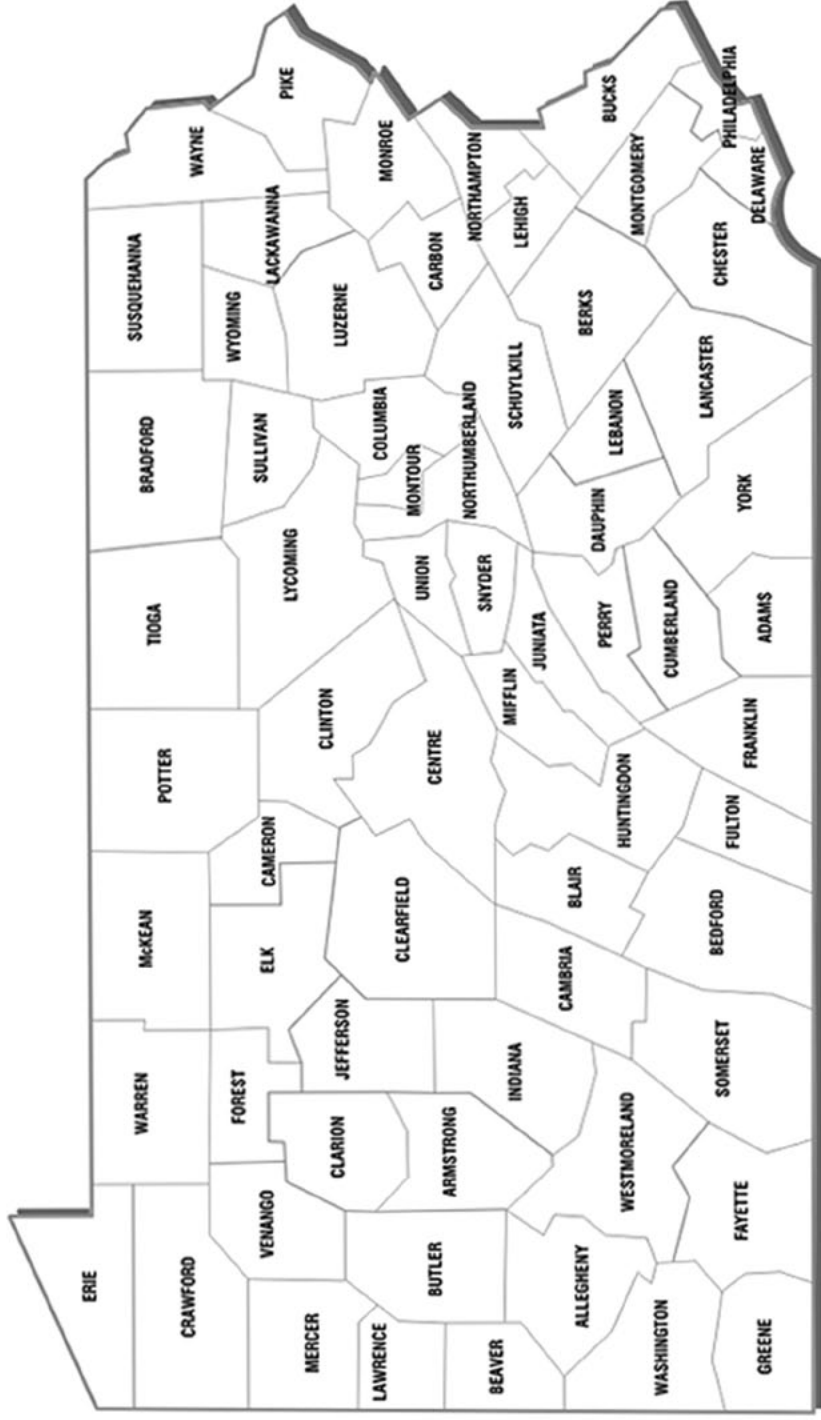


**When
it's time to
show off...**

we'll make you look great!

**Custom Web
& Print Design**

Office: 866.839.3353
Email: info@edje.com
www.edje.com



Member Farm Locations

Pennsylvania...

Adams County

Belmont Steaks Farm
Mountain View Farm
Tri-J Farm
Triple L Farm

Allegheny County

Lenzner Farms

Bedford County

Allegheny Meadows
Browell, Michael & Corinna
Feight's Farm
Kelley Farms
Ritchey's Simmentals
Shoemaker's Simmentals
Stony Creek Simmentals

Berks County

SASA Farms
Sugar Maple Properties

Chester County

Warren Point

Clarion County

Hillside Acres

Clearfield County

Harris Farms

Columbia County

Woolcock Farms

Crawford County

Long Meadows Farm

Cumberland County

Norwin Simmental

Dauphin County

Circle S Acres/Stockyard Style
Messick Farms
Nice, Brent

Powell's Valley Simmentals
Stewart's Simmental Cattle

Elk County

Elk County Simmentals

Fayette County

Cher-O-Kee Cattle Co.

Greene County

Campbell Show Calves
Frosty Springs Farm
Scherich's Simmental Farm

Shipman's Simmentals

Huntingdon County

E&R Farms
McClure Mills Farms

Indiana County

Woodview Simmental Farm

Jefferson County

Chambers Simmentals

Juniata County

Fry's Beef Farm
Gobbler's Knob Farm
Serenity Hills Farm
Sorrell Acres Farm

Lebanon County

Bummy's Hummies
CLO Simmentals
Double "B" Venture
JEH Simmentals
Whitmoyer's Mountain View

Luzerne County

White House Farm

Mercer County

Downs, David & Annette

Mifflin County

KNT Beef Farm

Northampton County

Poliskiewicz, Phil

Schuylkill County

Limbert Livestock Co.
Schadel, Neal & Darlane

Snyder County

Ste-Wan Farms

Somerset County

Tice, Chip & Debbie

Tioga County

Druck, Philip & Carol

Yenango County

Harvest Plantation

Washington County

Carlisle Farm
Smoky Valley Farm
SV//D&D Cattle Company

York County

Codorus Furnace Farm
NikLen Valley Farm
Stough, Wayne & Brenda
Weir, Mark & Lisa

Other states...

Connecticut

Fenton River Farm
Wanna-B-Rich Farm

Maryland

Anvil Acres
Dausch, Glenn
Folly Farm
Highfields Farm
Pond View Farm

Massachusetts

Double RD Farm

New Jersey

Bishop, Kevin W.
HSP Farms

New York

Back Road Ranch
Hudson Pines Farm
Ladybug Farm
Porter's Simmental Lake Ranch
Simme Valley Ranch

Ohio

Double R Simmentals
Lazy H Farm

West Virginia

Buena Vista Simmentals
CAM Cattle Co.
Classic Farms

RULES AND BY-LAWS
PENNSYLVANIA SIMMENTAL ASSOCIATION, INC.
BY-LAWS
ARTICLE 1
NAME

1. The name of this corporation shall be the Pennsylvania Simmental Association, Inc.

ARTICLE II
AIMS AND OBJECTIVES

1. The Pennsylvania Simmental Association has as its primary objective the development and promotion of the Simmental breed of cattle in the State of Pennsylvania. It is believed that the Simmental Breed can make an important contribution to the improvement of the cattle industry in Pennsylvania.

ARTICLE III
MEMBERSHIP

1. Application for membership must be made in writing to the Secretary-Treasurer of the Association.
2. The Board of Directors shall have the power to accept or reject any applications for membership. The Board of Directors shall have the power to suspend or expel any member who conducts himself in a manner detrimental to the Association or fails to comply with the rules and regulations without refund of membership fees or dues.
3. A member whose membership has been revoked must make a written application of reinstatement and can be reinstated only after having received three-fourths (3/4) affirmative vote from the Board of Directors.
4. Legal Partnerships or Incorporated Companies shall specify in writing the person authorized to vote or act in their behalf at any meeting of the Association.
5. Members may vote by proxy at the Annual Meeting if the delegate has in his possession the proxy of the undersigned membership, executed and sworn before a Notary Public.
6. Active Members shall be owners or breeders of cattle who pay the membership fee, and who are in good standing.
7. Associate Members are non-voting members who may be interested in advancement of the Association. Associate Members may not vote or hold elective offices.
8. (Amended January 14, 2006) Junior Members shall be those under 22 years of age who have paid the prescribed fee. Junior Members are not entitled to vote or to hold elective office except as herein after provided.
9. Honorary Members are individuals who have made an outstanding contribution to the development of the Simmental Breed in the State of Pennsylvania. They are elected by the general membership of the Association provided they have been recommended for such appointment by a prior resolution of the Board of Directors. Honorary memberships are not entitled to vote and may not hold elective offices.
10. Annual Dues: \$35.00 for Senior Members, \$10.00 for Junior Members.

ARTICLE IV
OFFICERS AND DIRECTORS

1. Duties of Officers

- a. The President shall be the Chief Executive Officer of the Association. He shall preside at its meetings. He shall carry on the business of the Association under the Articles of Incorporation, the by-laws, and the instructions of the Board of Directors.
- b. The Vice President, in the absence of the President, or at his request, shall perform the duties of said officer.

c. The Secretary-Treasurer may be a member of the Board of Directors, or he may be appointed or hired by the Directors. He shall manage and administer the business affairs of the Association in accordance with the policy and directives from the Board of Directors as communicated to him by the President. He shall be the official custodian of the seal and the records of the Association. He shall see to the financial affairs of the Association.

2. Duties of the Directors

a. (Revised March 28, 1986) The affairs of the Association shall be managed by a Board of Directors. Adult Directors shall be elected by written ballot at the Annual Meeting of the Association. The Board of Directors shall consist of ten (10) Adult members and one (1) Junior member. Each adult Director shall be limited to two (2) three (3) year consecutive terms. He shall again be eligible for re-election after one (1) year's absence. The Junior Director shall be elected by written ballot at the Annual Meeting of the Pennsylvania Junior Simmental Association and shall serve a one (1) year term of office and shall be limited to two (2) consecutive terms. He shall again be eligible for re-election after one (1) year's absence.

b. The Directors shall elect from among the active members of the Pennsylvania Simmental Association a President and Vice President whose terms of office shall be one (1) year or until the next annual meeting. The Board of Directors may appoint additional officers as they see fit in order to carry out efficiently the affairs of the Association. However, only active paid up members in good standing may be officers.

c. The Board of Directors shall have the authority to appoint anyone that they see fit to the Board of Directors, to serve a one (1) year term.

d. Each person who shall serve as a Director or Officer of the Association shall be indemnified by the Association against all costs and expenses incurred by or imposed upon him, in connection with or resulting from any action, suit or proceeding to which he is, or may be made a party, by reason of his being or having been a Director or Officer of the Association. Such indemnifications shall include settlements made in amounts approved by the Board of Directors at the time such settlement is effected, whether or not such person is a Director or Officer at the time such costs are incurred by or imposed upon him. Except, the indemnifications shall not apply where he shall be finally adjudged to be liable by reason of having been negligent, guilty of misconduct or otherwise derelict in the performance of his duty as an Officer or Director. The rights of indemnification herein provided shall not be exclusive of other rights to which such person may be entitled as a matter of law.

ARTICLE V
MEETINGS

1. Membership Meetings

a. An Annual Membership Meeting shall be held once in every calendar year with a maximum time of fifteen (15) months between meetings. The time and place shall be designated by the Board of Directors. All members will be notified by letter or in the official organ of the Association at least thirty (30) days prior to such meeting. The order of business shall be mentioned in the notice of the meeting.

b. A quorum for Annual Membership Meeting shall consist of the Active Members in good standing present.

c. Only Active Members who are in good standing and those whose membership is paid are entitled to vote at any Annual Membership Meeting.

d. Standard parliamentary procedure will be followed at all meetings of the Association membership and at all meetings of the Board of Directors.

e. Special membership meetings may be held at the discretion of the Board of Directors. All members will be notified by letter at least ten (10) days prior to the meeting.

date. Special business shall be mentioned in the notice and no other business shall be transacted.

2. Board of Directors Meeting

- a. The regular meeting of the Board of Directors shall be held each year in conjunction with and at the same place as the Annual Membership Meeting.
- b. In addition to the meeting provided for in paragraph "a" above, the Directors shall meet annually at a time and place to be selected by the Board of Directors. This meeting shall occur approximately six (6) months prior to the next Annual Membership Meeting.
- c. Special Meetings of the Board of Directors may be held on call of the President by giving ten (10) days notice in writing of time, place and purpose.
- d. Five (5) Directors shall constitute a quorum at any Directors Meeting.

ARTICLE VI COMMITTEES

1. Rules Committee

It shall be the duty of this Committee to interpret all rules and regulations, and to recommend such changes as they deem necessary to the Board of Directors for their approval.

2. Financial Committee

The Secretary-Treasurer shall be the Chairman of the two (2) Directors. Their purpose shall be to prepare a budget and submit it to the Board of Directors for their approval. They shall also make recommendations to the Board of Directors for the investment of available funds.

3. Exhibition Committee

This Committee shall make recommendations pertaining to live animal and carcass display.

4. Membership Committee

Shall promote and encourage membership in the Association.

5. Sales Committee

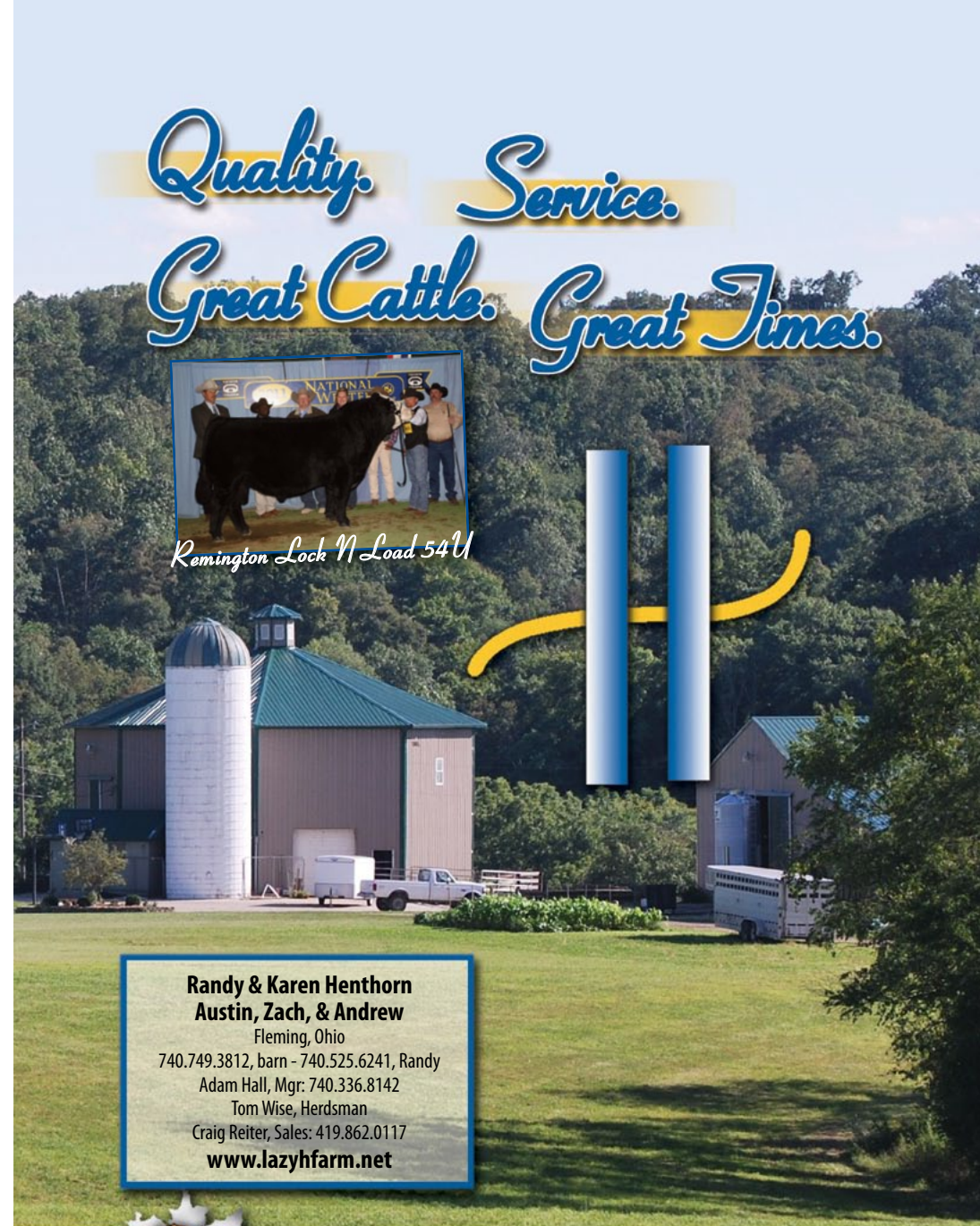
Shall set rules which uphold the performance and quality of the Simmental cattle in state sanctioned sales.

6. Promotion Committee


Shall make recommendations concerning the advertising and promotion of Simmental cattle to insure the proper image at sales.

ARTICLE VII BY-LAW AMENDMENTS

1. The Board of Directors shall have the power to amend the By-Laws of this organization by a three-fourths (3/4) majority vote.
2. Any change or revision of the By-Laws as a result of Board action shall become effective within thirty (30) days after which such change is published and every member is notified.
3. Any amendments made by the Board of Directors may be suspended if the Secretary-Treasurer received a petition signed by ten percent (10%) of the membership within sixty (60) days from the date of notification of the change or revisions.
4. Any such action of the Board of Directors may be subject to the approval of the membership at the next Annual Membership Meeting.



Quality. Service.
Great Cattle. Great Times.



Remington Lock N Load 54U

**Randy & Karen Henthorn
Austin, Zach, & Andrew**
Fleming, Ohio
740.749.3812, barn - 740.525.6241, Randy
Adam Hall, Mgr: 740.336.8142
Tom Wise, Herdsman
Craig Reiter, Sales: 419.862.0117
www.lazyhfarm.net



Please Be Our Guest at These Special, Upcoming Events:

Game Day @ Lazy H - October 20, 2012
The Spring Game @ Lazy H - April 20, 2013

Join the fun!

Pennsylvania Junior Simmental Association



Pennsylvania Junior Simmental Association

Please visit our website, www.pajrsimmental.com

Junior Advisors—Rhonda Arndt, Annette Downs, Sally Runkle

Officers and Royalty

President Bridget Fox

169 Dellville Road
Duncannon, PA 17020
(717) 834-3808

Treasurer Emmett Fox

169 Dellville Road
Duncannon, PA 17020
(717) 834-3808

PSA Queen Bridget Fox

169 Dellville Road
Duncannon, PA 17020
(717) 834-3808

Vice President Emily Benner

429 Happy Hollow Rd.
Mifflintown, PA 17059
(717) 436-2745

Secretary Grace Graham

13820 Wolf Road
Felton, PA 17322
(717) 968-6635

PSA Princess Grace Graham

13820 Wolf Road
Felton, PA 17322
(717) 968-6635

Pennsylvania Junior Simmental Association Application for Membership

www.pajrsimmental.com

Member Name: _____ Birth Date: _____

Farm Name: _____

Address: _____

City: _____ State: _____ Zip: _____

Telephone Number: (____) _____ County: _____

E-mail: _____ Web Site: _____

\$10.00 Junior Membership _____

Signature _____ Date: _____

Send to:

Annette Downs
194 Stock Farm Road
Jackson Center, PA 16133
Phone: (724) 376-7195
E-mail: annettedowns@gmail.com

Natushka Shoemaker Memorial Award



Pictured are (left to right): Brent Nice, Matt Blauch, Dr. Doug Parrett (judge), Greg Stewart, Chris Gros, and William Shoemaker.

The Natushka Shoemaker Memorial Award was presented to PJSA member Chris Gros, of Halifax, Pa., for exhibiting the Grand Champion Heifer, SSC Spicy 55x, of the Junior Simmental show at the 2012 PA State Farm Show. Chris received an embroidered director's chair and a \$200.00 cash award.

Natushka Shoemaker made significant contributions to the PSA over the twelve years she served as the Association's Secretary. In addition, Nat was instrumental in collecting and tabulating PTP data, which was used by judges for the Simmental breed shows at the Keystone International Livestock Exposition and the Pennsylvania Farm Show.

For more information about the Natushka Shoemaker Memorial Award, please see the PSA's website.

Please consider supporting the *Natushka Shoemaker Memorial Award*. Contributions may be sent to:

Pennsylvania Simmental Association
c/o Patty Kuharic, Treasurer
1351 Oberlin Road
Middletown, PA 17057

Pennsylvania Junior Simmental Association Members

Balthaser, Mark.....(610) 488-6389
52 Tulley Drive, Bernville, PA 19506

Benner, Emily.....(717) 436-2745
429 Happy Hollow Road, Mifflintown, PA 17059
E-mail: emilysbenner12@yahoo.com

Belding, Andrew D......(570) 644-0886
2017 Creek Road, Pitman, PA 17964
E-mail: Belding@Hughes.net

Briggs, Darrell Jr......(724) 663-7868
1889 Beham Ridge Road, Claysville, PA 15323
E-mail: bigdfarm@hotmail.com

Browell, Michelle.....(814) 652-2150
3792 Raystown Road, Hopewell, PA 16650
E-mail: cbrowell@gmail.com

Corle, Kayla.....(814) 502-8973
480 East Graceville Road, Breezewood, PA 15533

Dausch, Stephanie.....(410) 893-7133
2113 Harkins Road, Pylesville, MD 21132

Diamond, Christopher Jr......(724) 583-1000
275 Jacobs Creek Road, Smithfield, PA 15478

Downs, Cody.....(724) 376-7195
194 Stock Farm Road, Jackson Center, PA 16133
E-mail: annettedowns@ymail.com

Downs, Sara.....(724) 376-7195
194 Stock Farm Road, Jackson Center, PA 16133
E-mail: saraedowns@yahoo.com

Dysinger, Breana.....(717) 694-3838
571 Conrad Road, Millerstown, PA 17062

Fox, Bridget.....(717) 834-3808
169 Dellville Road, Duncannon, PA 17020
E-mail: 12bfox@gmail.com



Animal Sciences at Penn State

OPTIONS FOR THE ANIMAL SCIENCES MAJOR

- Business/Management—preparation for agribusiness, farm management, and sales/technical service careers
- Science—preparation for veterinary, graduate, and other professional schools

BLOCK AND BRIDLE CLUB

- Members develop skills in leadership, teamwork, and communications
- Hands-on opportunities with animals at KILE, Club Calf Sale, and Little International Livestock Exposition

LIVESTOCK JUDGING TEAM

- Travel and judge premier livestock across the country

HANDS-ON EXPERIENCE

- Work and/or live at one of seven animal facilities
- Assist with or conduct your own research
- Internships and/or externship opportunities

SCHOLARSHIPS

- \$1.8 million in the College of Agricultural Sciences

For more information, contact Jana Peters, advising coordinator, at jpeters@psu.edu or 814-863-4198.

animalsciences.psu.edu

Penn State is committed to affirmative action, equal opportunity, and the diversity of its workforce. U Ed AGR 09-57

Pennsylvania Junior Simmental Association Members

(Continued)

Fox, Emmett(717) 834-3808
169 Dellville Road, Duncannon, PA 17020
E-mail: efox717@gmail.com

Fox, Wyatt(717) 834-3808
169 Dellville Road, Duncannon, PA 17020
E-mail: foxcountry5@embarqmail.com

Fry, Jennifer(717) 436-9708
20389 Route 35 South, Mifflin, PA 17058

Garner, Mekenzie(717) 734-3420
1133 Rt. 850, Honey Grove, PA 17035

Graham, Grace(717) 968-6635
13820 Wolf Road, Felton, PA 17322
E-mail: niklervalley@aol.com

Graham, Levi(717) 968-6635
13820 Wolf Road, Felton, PA 17322
E-mail: niklervalley@aol.com

Gromlich, Austin(610) 562-5737
121 Schappell Road, Hamburg, PA 19526
E-mail: sasafarm@copper.net

Gromlich, Colby(610) 562-5737
121 Schappell Road, Hamburg, PA 19526
E-mail: sasafarm@copper.net

Gromlich, Dalton "DJ"(610) 562-5737
121 Schappell Road, Hamburg, PA 19526
E-mail: sasafarm@copper.net

Gros, Chris
2016 Armstrong Valley Road, Halifax, PA 17032

Harpster, Rob(814) 692-7653
2821 Tadpole Road, PA Furnace, PA 16865
E-mail: lharpster@yahoo.com

Herman, Blake(570) 837-8916
1841 Bailey Hill Road, Beavertown, PA 17813
E-mail: timertoetam@evenlink.com



STEIN-WAY EQUIPMENT

Built Stronger. Lasts Longer.



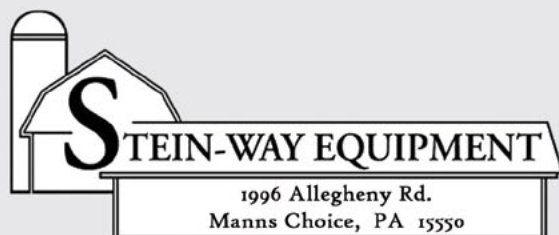
Auto Release Self-Locks

Also selling...

- Custom fit barn gates
- Slant bar feed panels
- Stock size pasture gates
- Jug, Miraco & Ritchie waterers



NEW! Bale Boss II - Designed for Large Square Bales



814-733-2775 • 1-888-605-2422

www.steinwayequipment.com

Pennsylvania Junior Simmental Association Members

(Continued)

McCloskey, Kayla	(570) 658-2611
61 McKnight Road, McClure, PA 17841	
McLaughlin, Katie	(717) 447-0532
9771 Licking Creek Road, Mifflintown, PA 17059	
E-mail: stevebigred2000@yahoo.com	
Meiler, Charles Peter	(717) 292-1515
2010 Conewago Road, Dover, PA 17315	
Meiler, Eli	(717) 292-1515
2010 Conewago Road, Dover, PA 17315	
Poliskiewicz, Julie	(610) 498-2816
5552 Berry Hollow Road, Bangor, PA 18013	
E-mail: xpoliskiewiczxx@hotmail.com	
Reynolds, Billy	(717)-737-9351
1060 W Limekiln Road, New Cumberland, PA 17070	
Ritchey, Alana	(814) 766-9967
147 Hilltop Drive, New Enterprise, PA 16664	
Shoop, Eric	(570) 758-3226
411 Shoop Road, Dalmatia, PA 17017	
E-mail: shoops@tds.net	
Sommer, Jordan	(717) 382-1320
2370 New Park Road, New Park, PA 17352	
E-mail: sommersprings@yahoo.com	
Stough, Blake	(717) 845-3289
2589 Audlyn Drive, York, PA 17404	
E-mail: stoughcow@aol.com	
Treaster, Terrill	(814) 364-1399
272 Mountain Back Road, Spring Mills, PA 16875	
E-mail: purplecowspoop@hotmail.com	
Weir, Elizabeth	(717) 266-2530
1175 Jerusalem School Road, Mt. Wolf, PA 17347	
E-mail: weirland@netzero.com	
Witter, Billy J. Jr.	(717) 801-7100
606 Basehoar School Road, Littlestown, PA 17340	
Wolfgang, Caitlin	(717) 944-6745
1351 Oberlin Road, Middletown, PA 17057	
E-mail: cwolfgang@live.com	



*Looking to target the right market
for your purebred and percentage
Simmental cattle???*

Consign to PSA sponsored sales!

The Pennsylvania Simmental Association's two sponsored sales, the *PA Beef Expo Simmental Female Sale* held in March and the *PA Fall Classic Sale* held in October, are excellent ways of selling your cattle. The PSA is committed to the continued success of their sales, which reach a wide-ranging market -- from commercial producers seeking seedstock, to juniors searching for their next winners. These sales are right on target!

The *PA Beef Expo Simmental Female Sale* is held in conjunction with the Performance Tested Bull Sale at the Livestock Evaluation Center, Pennsylvania Furnace, PA. Because of the facilities available for the sale, halter broken cattle are preferred, however, there are accommodations for a few non-halter broken animals.

The *PA Fall Classic Sale*, held at the Greene County Fairgrounds, Waynesburg, PA, on the fourth Saturday of October, welcomes consignments of heifers, cows, and bulls (and show steer prospects, too!). As this sale has been held in the same location for many years, it is well attended by cattlemen from several states looking for good-quality cattle to improve their herds.

For more information about PSA sales, please contact Greg Stewart 717-350-5235.

STRONGHOLD

CATTLE
HANDLING
EQUIPMENT

The Brand That's Built to Handle Yours

StrongHold Cattlemaster 640:

- Heavy-duty manual headgate
- Humping bar
- Side exit on both sides
- Ratchet bar side squeeze
- Flex cutting gate
- Palpation cage
- Restraining pipe
- Diamond plate floor
- Available with digital scale
- Optional wheel assembly for portability



StrongHold Heavy-Duty Alley Way:

- Easy glide Nylatron movement
- Interchangeable brackets maximize positioning
- Infinite and secure adjustment
- Ground clearance of moving parts is six inches
- Pre-punched for Alley Can't Back
- Alley adjusts from less than 15 inches to 28+ inches



StrongHold Heavy-Duty Alley Way:

- Eight-foot sweeping radius
- Spring-loaded crowding gate latch
- 14 gate locking points
- Heavy-duty towing hitch
- Folds in half to six feet wide



All StrongHold Chutes are Scale-Ready:

- Digital read out
- Reliable and accurate (1% error or less)
- Low profile
- AC/DC or battery powered
- Weather resistant
- Urethane outer jackets on cable connections
- *Cattlemaster 440 requires weldment option



Your local StrongHold contact:

EASTERN STATES LIVESTOCK SYSTEMS

1563 Oak Grove Road
Breezewood, PA 15533
814.977.0848



Frank "Butch" Otto
1-800-242-3240

MVS MAXIMUS T-6

2009 NATIONAL CHAMPION SIMMENTAL BULL

ASA # 2371205

HETEROZYGOUS BLACK / HOMOZYGOUS POLLED

50 REGISTERED PUREBRED AND 34 REGISTERED COMMERCIAL CALVES
ASA CARCASS MERIT PROGRAM ENROLLED

SPRING 2012 EPD'S

CE	BW	WW	YW	MCE	MM	MWW	STAY	API	TI
9.0	-0.2	37.3	75.7	7.7	7.6	26.3	21.7	125.7	70.0

TOP 30% FOR CALVING EASE AND BIRTH WEIGHT
TOP 25% FOR WEANING WEIGHT AND DOCILITY
TOP 10% FOR MWW, ALL PURPOSE INDEX AND TERMINAL INDEX
TOP 20% FOR MATERNAL MILK TOP 8% FOR YEARLING WEIGHT



CONGRATULATIONS TO

RIDGEWOOD SIMMENTALS, BOONE, NC AND **MAXIMUS SON MVS MAXIMUS PRIME**
GRAND CHAMPION SIMMENTAL BULL, NORTH CAROLINA STATE FAIR, OCT 2010
AND SENIOR CHAMPION BULL, OCT 2011

HILLCREST FARM, AUBURN, MA & **MAXIMUS DAUGHTER MVS LUCILLA**, GRAND
CHAMPION SIMMENTAL FEMALE AND RESERVE SUPREME CHAMPION FEMALE AT
THE WOODSTOCK FAIR, CT, OCT 2010.

STEWART'S SIMMENTAL CATTLE FOR BUYING PASTURE RIGHTS ON MAXIMUS IN 2011.

SIMME VALLEY RANCH FOR BUYING PASTURE RIGHTS ON MAXIMUS IN 2012.

SEMEN &
CALVES
AVAILABLE

MOUNTAIN VIEW SIMMENTALS INC.
AT MOUNTAIN VIEW FARM,

TOM AND BARBARA VOSSLER, GETTYSBURG PA

717-337-1615 / 717-752-6823

SEMEN &
CALVES
AVAILABLE

SHOEMAKER'S SIMMENTALS

2006 PA Farm Show Premier Breeder and Exhibitor



Shoemaker's Real Deal

2006 PA Farm Show Grand Champion Bull

Shoemaker's Miss Marker

STF Mr Momentum H508

Herd Sire - Shoemaker's Commander



Commander Offspring Offer Excellence in the Show Ring



Shoemaker's Lady Precept

2006 PA Farm Show
Grand Champion Simmental Heifer



Shoemaker's Salome

2006 PA Farm Show - Junior Show
Reserve Champion Simmental Heifer

Commander Offspring Also Offer Superior Performance

2003-2004 Pennsylvania Bull Test
2nd Highest Indexing Bull
3 of The Top 6 Highest Indexing Bulls

2005-2006 Pennsylvania Bull Test
2nd Highest Indexing Bull
3 of The Top 5 Highest Indexing Bulls

William Shoemaker

3839 Milligans Cove Road • Manns Choice, PA 15550
Telephone: (814) 624-0667 Cell: (412) 721-8814

Email: shoesim@yahoo.com

Hudson Pines Farm

... your Premier Breeders for GimGenetics



*Premier Breeder & Exhibitor
2011 Breeders Sweepstakes*

Louisville, KY



*Premier Breeder & Exhibitor
2011 NAILE*

Louisville, KY



*Premier Breeder
2012 NWSS*

Denver, CO



**Hudson
Pines
Farm**

www.hudsonpinesfarm.com

David Rockefeller, Owner • Miranda Kaiser, Owner/Executive Director
John Walston, General Manager • 518.851.2000
Ryan Haefner, Farm Manager • 914.631.1154
Casey Buzard, Show & Sale Cattle • Jeff Queckboerner, Herdsman
Chan and Keith Phillips, Managing Partners HP@Rocking P • 606.584.7581